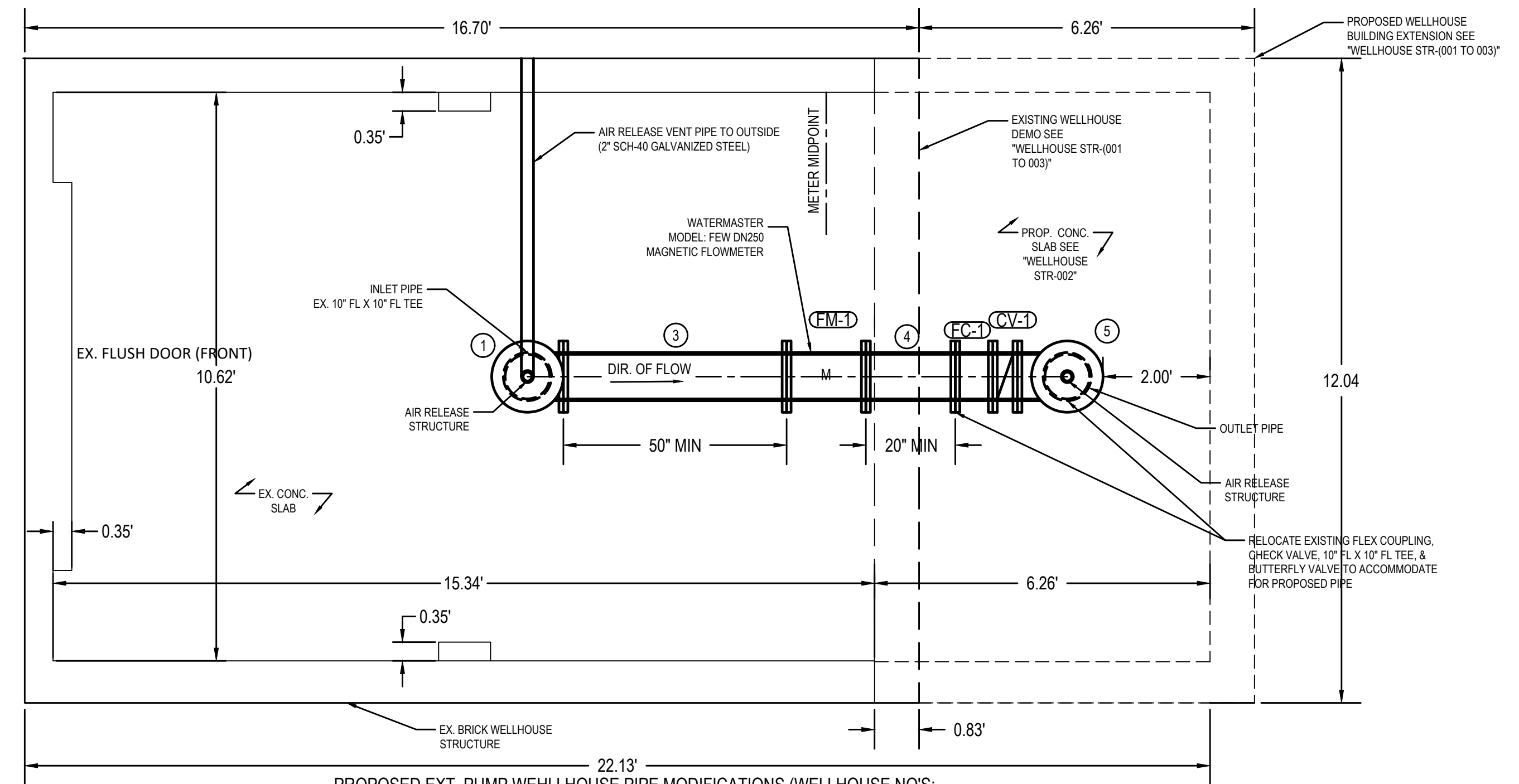
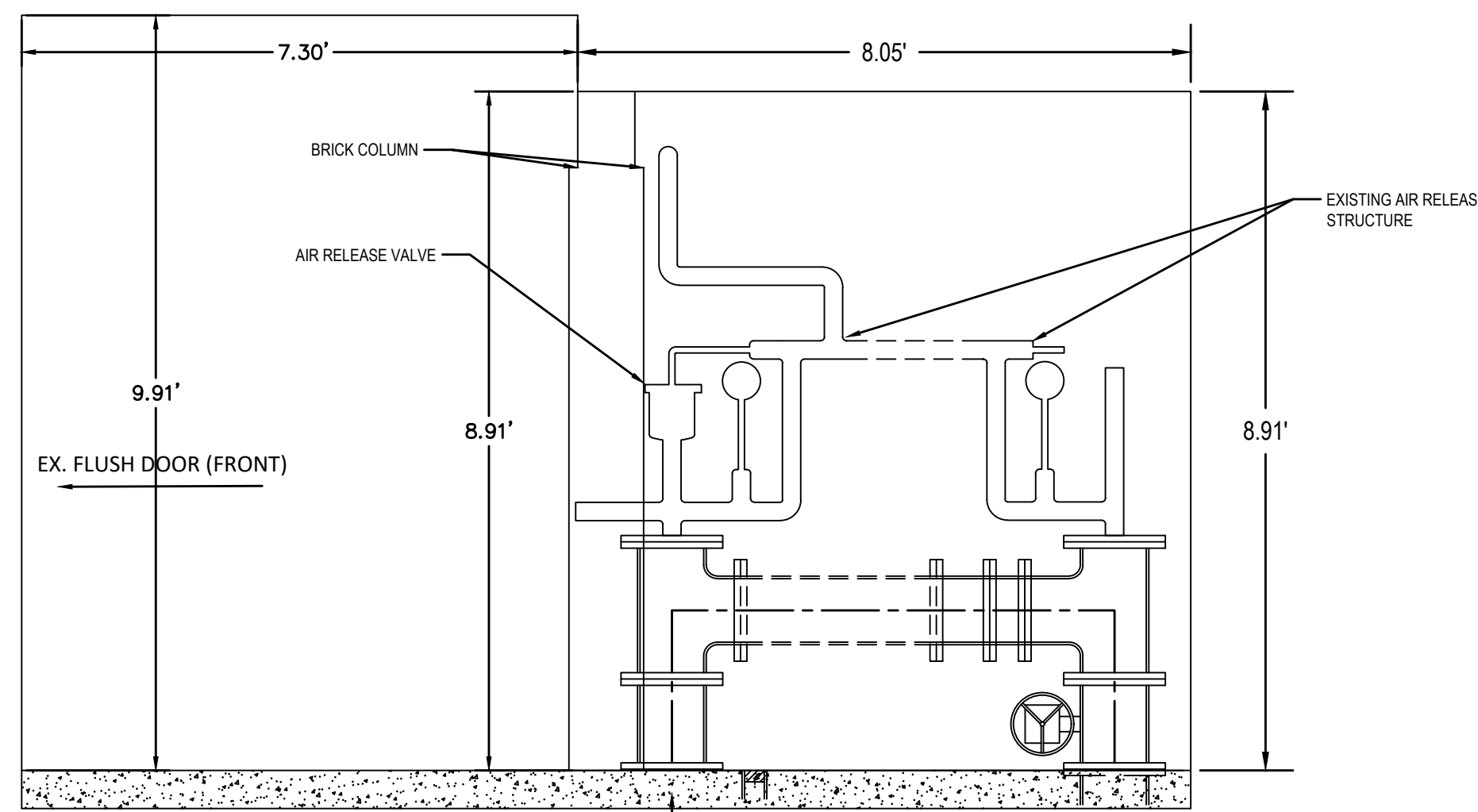


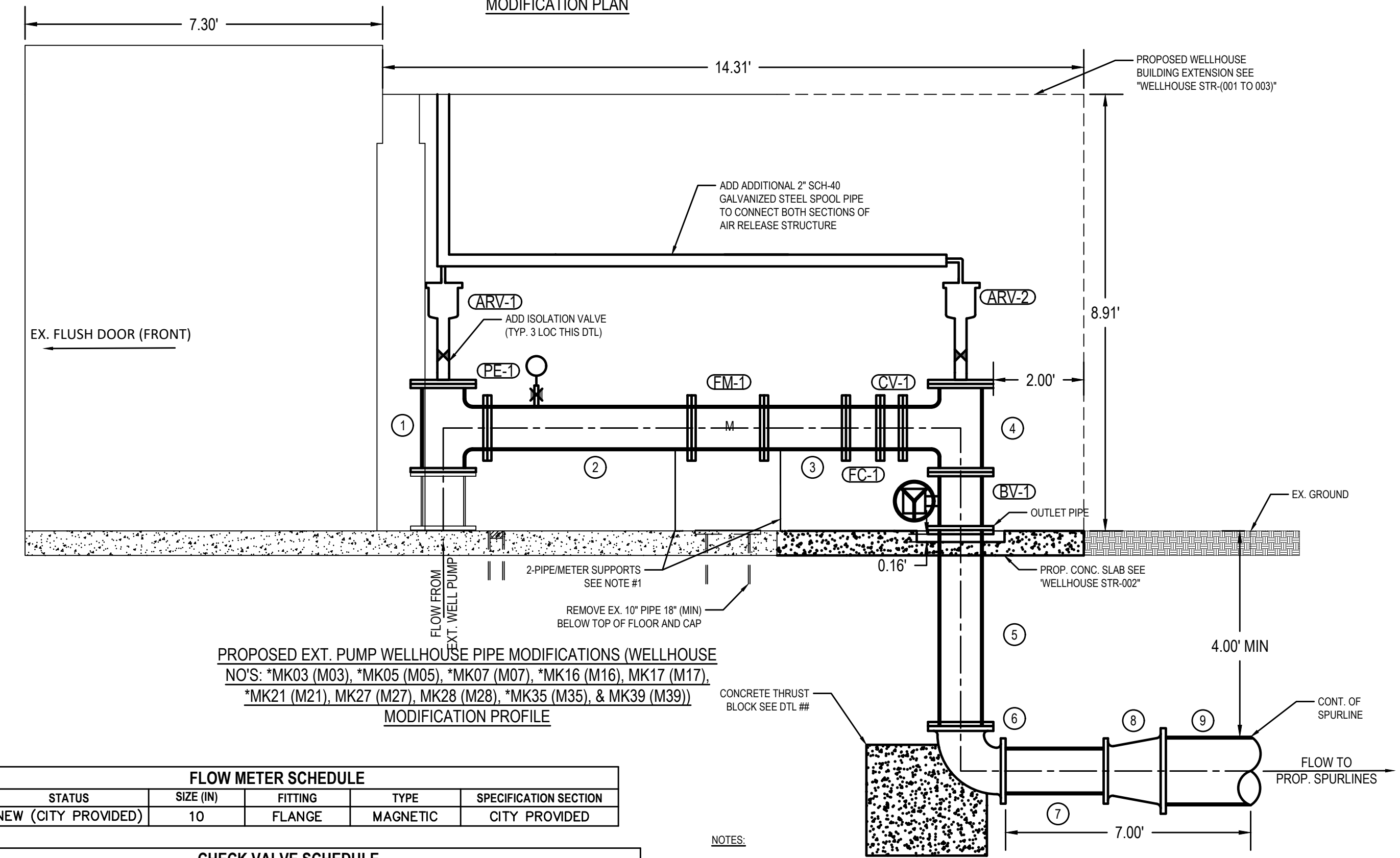
EXISTING TYPICAL PLAN VIEW WELLHOUSE NO'S:  
 MK03 (M03), MK05 (M05), MK07 (M07), MK16 (M16),  
 MK17 (M17), MK21 (M21), MK27 (M27), MK28 (M28),  
 MK35 (M35), & MK39 (M39)



PROPOSED EXT. PUMP WELLHOUSE PIPE MODIFICATIONS (WELLHOUSE NO'S:  
 \*MK03 (M03), \*MK05 (M05), \*MK07 (M07), \*MK16 (M16), MK17 (M17), \*MK21 (M21), MK27  
 (M27), MK28 (M28), \*MK35 (M35), & MK39 (M39))  
 MODIFICATION PLAN



EXISTING TYPICAL SECTION VIEW WELLHOUSE NO'S:  
 MK03 (M03), MK05 (M05), MK07 (M07), MK16 (M16),  
 MK17 (M17), MK21 (M21), MK27 (M27), MK28 (M28),  
 MK35 (M35), & MK39 (M39)



PROPOSED EXT. PUMP WELLHOUSE PIPE MODIFICATIONS (WELLHOUSE  
 NO'S: \*MK03 (M03), \*MK05 (M05), \*MK07 (M07), \*MK16 (M16), MK17 (M17),  
 \*MK21 (M21), MK27 (M27), MK28 (M28), \*MK35 (M35), & MK39 (M39))  
 MODIFICATION PROFILE

FITTING SCHEDULE			
ITEM	DESC.	EX./NEW	NOTE
1	10" FL X 10" FL TEE	NEW	INCLUDES FLANGE CAP FOR AIR RELEASE VALVE
2	10" FL X FL DICL SPOOL	NEW	LENGTH = 50"
3	10" FL X FL DICL SPOOL	NEW	LENGTH = 20"
4	10" FL X 10" FL TEE	NEW	INCLUDES FLANGE CAP FOR AIR RELEASE VALVE
5	10" FL X PE DICL SPOOL	NEW	LENGTH AS REQUIRED
6	10" DICL RJ 90° BEND	NEW	
7	10" PE X PE SPOOL PIPE	NEW	LENGTH AS REQUIRED
8	DICL RJ REDUCER	NEW	SEE REDUCER SCHEDULE THIS SHEET
9	PVC C900 PIPE	NEW	LENGTH AS REQUIRED & SEE REDUCER SCHEDULE THIS SHEET FOR DOWNSTREAM PIPE DIA.

FLOW METER SCHEDULE					
MARK	STATUS	SIZE (IN)	FITTING	TYPE	SPECIFICATION SECTION
FM-1	NEW (CITY PROVIDED)	10"	FLANGE	MAGNETIC	CITY PROVIDED

CHECK VALVE SCHEDULE					
MARK	STATUS	SIZE (IN)	FITTING	OPERATOR	SPECIFICATION SECTION
CV-1	NEW	10"	FLANGE	SPRING & LEVER	33 12 16

BUTTERFLY VALVE SCHEDULE					
MARK	STATUS	SIZE (IN)	FITTING	OPERATOR	SPECIFICATION SECTION
BV-1	NEW	10"	FLANGE	GEARED W/ HANDWHEEL	33 12 16

AIR RELEASE VALVE SCHEDULE					
MARK	STATUS	SIZE (IN)	FITTING	SPECIFICATION SECTION	
ARV-1	NEW	2"	THREADED	33 12 16	
ARV-2	NEW	2"	THREADED	33 12 16	

PRESSURE ELEMENT SCHEDULE									
MARK	STATUS	INDICATOR	TRANSMITTER	PS-LOW	PS-HIGH	BALL VALVE	DIAPHRAGM	RANGE (PSI)	SPECIFICATION SECTION
PE-1	NEW	X	X			X		0-150	43 21 31

FLEX COUPLING SCHEDULE				
MARK	STATUS	SIZE (IN)	FITTING	SPECIFICATION SECTION
FC-1	NEW	10"	FLANGE	43 21 31

\*DENOTES AN ADD ALTERNATE WELLHOUSE

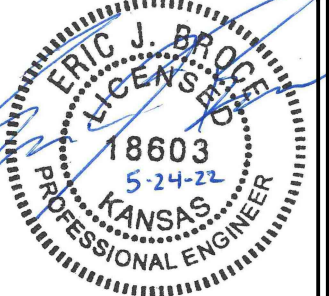
EXT. PUMP WELLHOUSE REDUCER SCHEDULE		
LINE NO.	REDUCER	DOWNSTREAM PIPE DIA. (IN)
M03	10" X 16" RJ REDUCER	16
M05	10" X 16" RJ REDUCER	16
M07	10" X 16" RJ REDUCER	16
M16	10" X 16" RJ REDUCER	16
M17	10" X 16" RJ REDUCER	16
M21	10" X 16" RJ REDUCER	16
M27	10" X 12" RJ REDUCER	12
M28	10" X 12" RJ REDUCER	12
M35	10" X 12" RJ REDUCER	12
M39	10" X 16" RJ REDUCER	16

- NOTES:
- METER SUPPORTS MAY BE POURED IN PLACE OR MECHANICAL PIPE SUPPORTS AS MANUFACTURED BY ITT GRINNELL OR APPROVED EQUAL ON 2" CONCRETE PADS.
  - ALL PIPE, APPURTENANCES, AND OTHER ITEMS REQUIRED TO COMPLETE THE WELL HOUSE MODIFICATIONS AS SHOWN SHALL BE FURNISHED AND INSTALLED BY CONTRACTOR AND SHALL BE INCLUDED IN THE BID FOR
  - UPON INSTALLATION OF PROP. CONCRETE SLAB (OUTLINED IN DTL #4) CONTRACTOR SHALL VERIFY WATER FLOWS TO EX. DRAIN.
  - COORDINATE PUMP OPERATIONS WITH WELLFIELD STAFF.
  - NEW PIPING SHALL BEGIN AT THE FIRST FLANGED FITTING ABOVE THE FLOOR AND CONNECTED TO THE EXISTING FLANGED PIPING GOING THROUGH THE FLOOR.
  - EXISTING HEATER AND POWER OUTLET SHALL BE RELOCATED TO THE NEW BACK WALL.
  - ARV-1 SHALL BE A 2" A.R.L. D-060-C HF OR APPROVED EQUAL.
  - ARV-2 SHALL BE A 2" A.R.L. D-060-C HF NS OR APPROVED EQUAL.

Environment & Infrastructure Solutions, Inc.  
 245 N. WACO AVENUE, SUITE 110  
 WICHITA, KANSAS 67202  
 PHONE: 316-448-2711  
 FAX: 316-448-2711

EXTERIOR PUMP WELLHOUSE MODIFICATIONS  
 EQUUS WELLFIELD SPURLINE REPLACEMENT  
 GARY JANZEN, P.E. - CITY ENGINEER  
 CITY OF WICHITA

DESIGNED BY: EJB  
 DRAWN BY: AJM  
 CHECKED BY: ---  
 DATE: MAY 24, 2022



PROJECT NO.  
 639020  
 SHEET NO.  
 27  
 OF 35

Last Saved by: alex.mckean - Plotted: Alex Plot Date/Time: 5/24/2022 1:41 PM  
 File: L:\8275000373 - Wichita Spurlines Wellhouse Modifications\M3 Wellhouse Modification.dwg