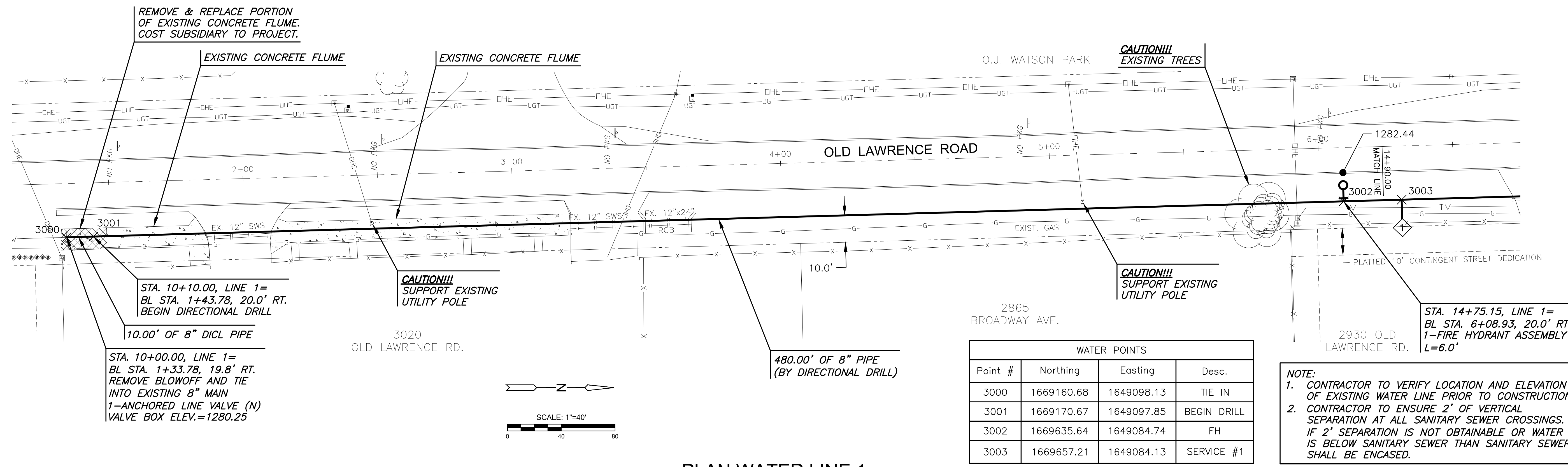


J:\PROJECTS\2019\10483_COW-WATER LINE IMPROVE-OLD LAWRENCE RD_190483 CAD\SH1505_COW-WATER LINE IMPROVE-OLD LAWRENCE RD_190483.dwg
 PLOTTED: Tuesday, May 31, 2022 @ 11:06AM

©2022
 MKEC Engineering
 All Rights Reserved
 www.mkec.com
 These drawings and their contents, including, but not limited to, all concepts, designs, & ideas are the exclusive property of MKEC Engineering (MKEC), and may not be used or reproduced in any way without the express consent of MKEC.

WATER LINE 1		
PROJECT NO.	448-2021-034133	
DATE	MAY 2022	
SCALE	1" = 20'	
DESIGNED	DRAWN	
DFL	JWC	
CHECKED	KDA	
NO.	REVISION	DATE
SHEET NO.		
04 OF 10		



WATER POINTS			
Point #	Northing	Easting	Desc.
3000	1669160.68	1649098.13	TIE IN
3001	1669170.67	1649097.85	BEGIN DRILL
3002	1669635.64	1649084.74	FH
3003	1669657.21	1649084.13	SERVICE #1

NOTE:
 1. CONTRACTOR TO VERIFY LOCATION AND ELEVATION OF EXISTING WATER LINE PRIOR TO CONSTRUCTION.
 2. CONTRACTOR TO ENSURE 2' OF VERTICAL SEPARATION AT ALL SANITARY SEWER CROSSINGS. IF 2' SEPARATION IS NOT OBTAINABLE OR WATER IS BELOW SANITARY SEWER THAN SANITARY SEWER SHALL BE ENCASED.

PLAN WATER LINE 1
PROFILE WATER LINE 1

