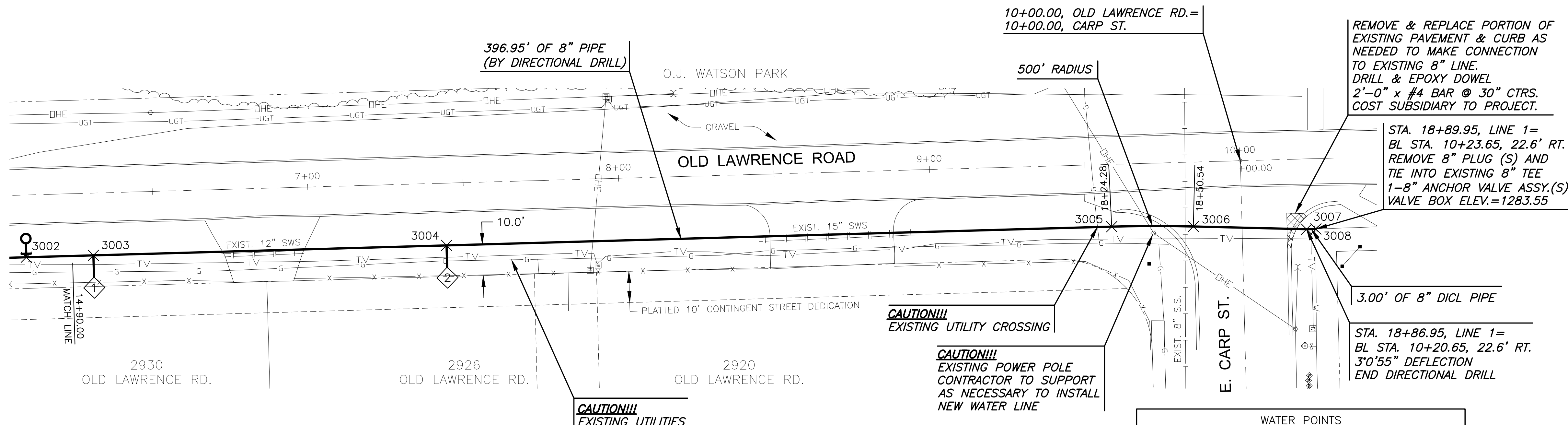
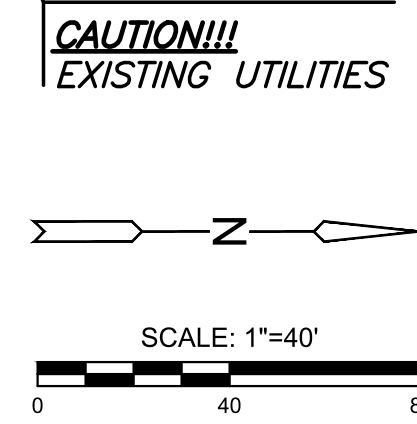


J:\PROJECTS\2019\1901010483_COW-WATER LINE IMPROVE-OLD LAWRENCE RD_190483 CAD\SHS\05_CVAL\WTR\190483-05-2020.DWG
 PLOTTED: Tuesday, May 31, 2022 @ 11:20AM
 WICHITA, KANSAS



SERVICE CONNECTION SCHEDULE					
NUMBER	ADDRESS	LINE NO.	STATION	LENGTH	COMMENTS
1	2930	1	14+96.74	6.0'	
2	2926	1	16+10.32	6.0'	

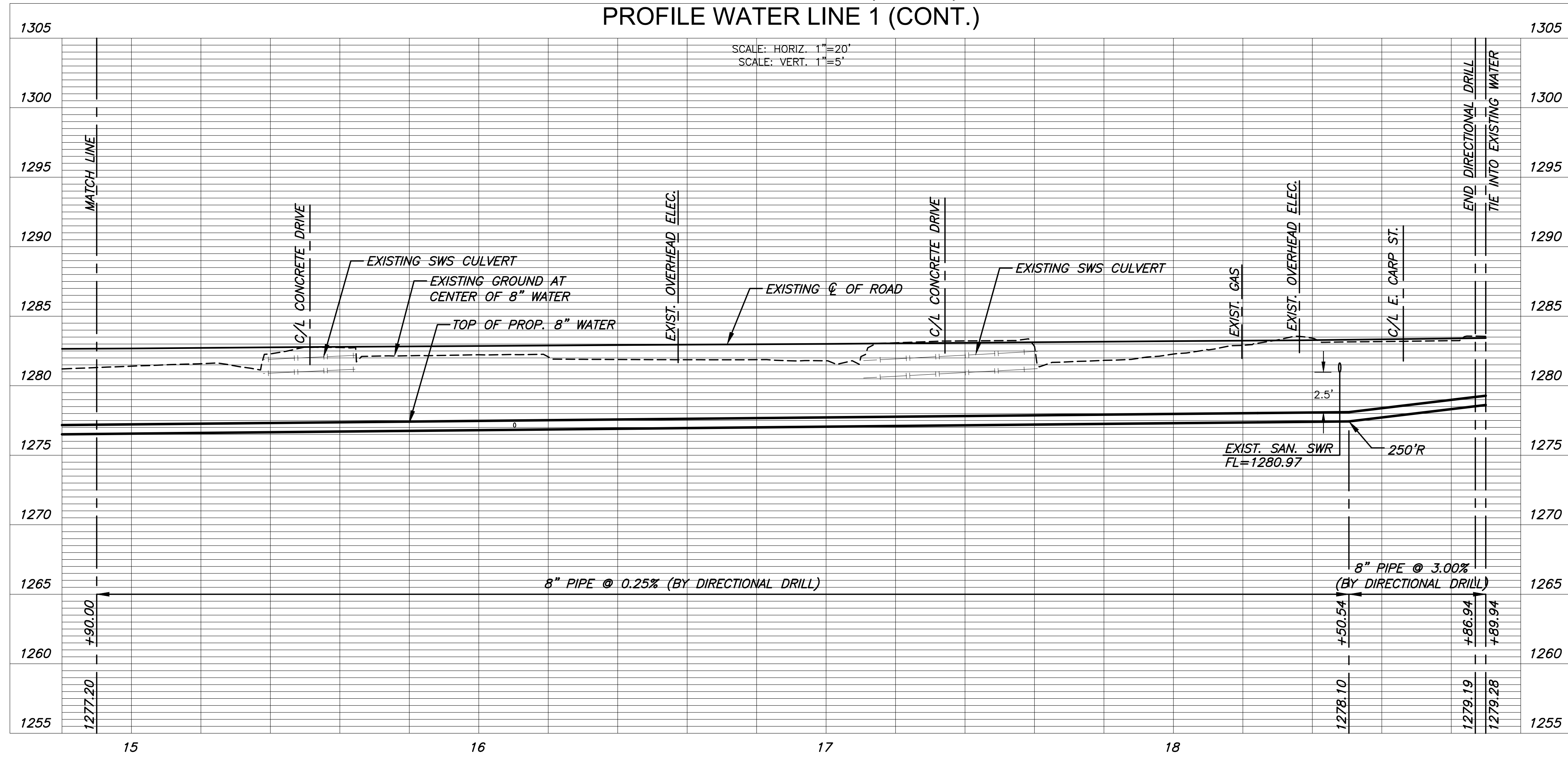


NOTE:

- CONTRACTOR TO VERIFY LOCATION AND ELEVATION OF EXISTING WATER LINE PRIOR TO CONSTRUCTION.
- CONTRACTOR TO ENSURE 2' OF VERTICAL SEPARATION AT ALL SANITARY SEWER CROSSINGS. IF 2' SEPARATION IS NOT OBTAINABLE OR WATER IS BELOW SANITARY SEWER THAN SANITARY SEWER SHALL BE ENCASED.

WATER POINTS			
Point #	Northing	Easting	Desc.
3004	1669770.75	1649080.93	SERVICE #2
3005	1669984.63	1649074.90	PC
3006	1670010.89	1649074.85	PT
3007	1670047.28	1649075.73	END DRILL
3008	1670050.28	1649075.65	TIE IN

PLAN WATER LINE 1 (CONT.)
 PROFILE WATER LINE 1 (CONT.)



WATER DISTRIBUTION SYSTEM IMPROVEMENTS
OLD LAWRENCE WATER IMPROVEMENT
 WICHITA, KANSAS

©2022
 MKEC Engineering
 All Rights Reserved
 www.mkec.com
 These drawings and their contents, including, but not limited to, all concepts, designs, & ideas are the exclusive property of MKEC Engineering (MKEC), and may not be used or reproduced in any way without the express consent of MKEC.

WATER LINE 1 CONT		
PROJECT NO.	448-2021-034133	
DATE	MAY 2022	
SCALE	1" = 20'	
DESIGNED	DRAWN	CHECKED
DFL	JWC	KDA
NO.	REVISION	DATE
SHEET NO.		
05 OF 10		