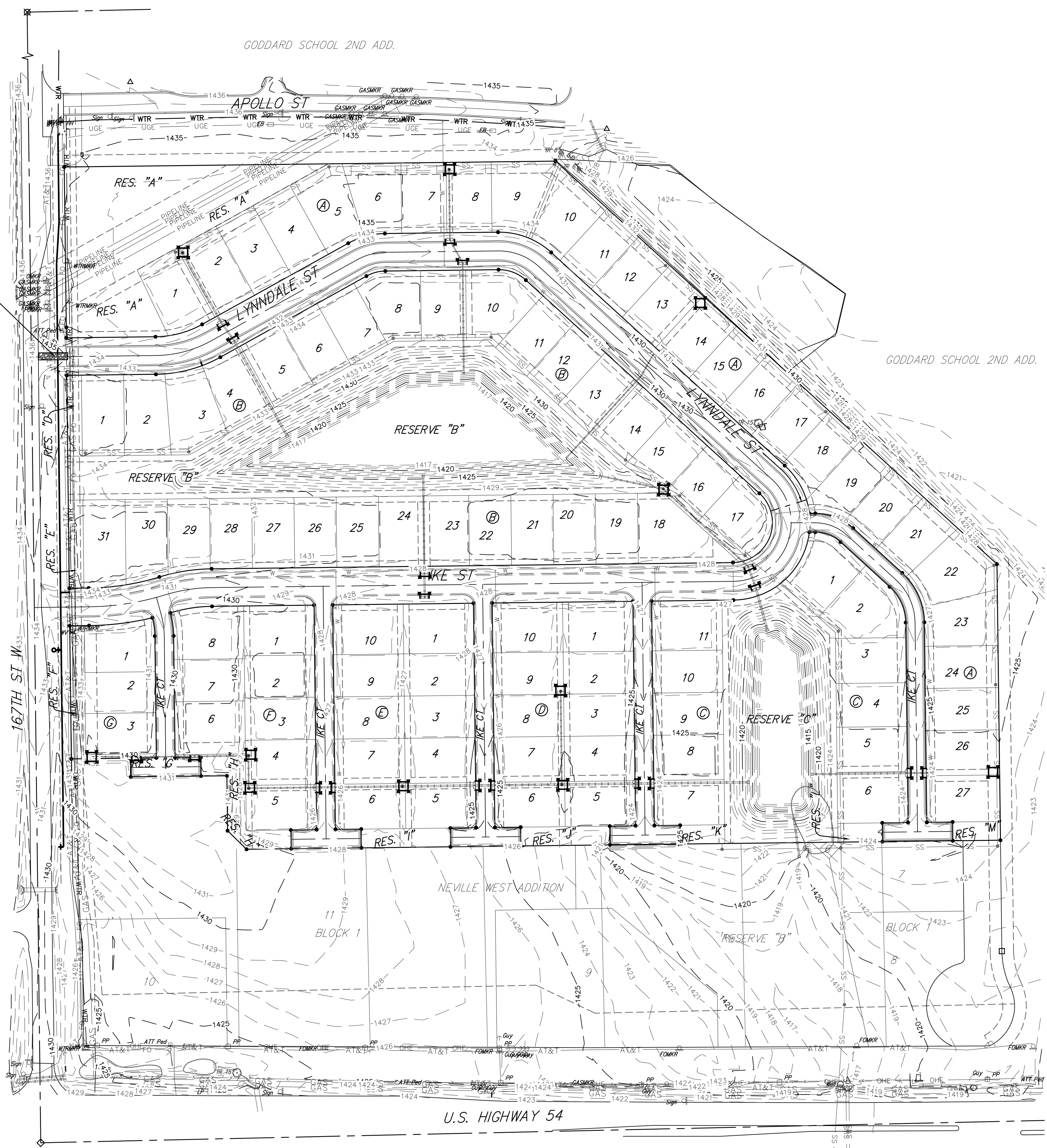


BENCHMARK #1:
Chiseled plus cut inside chiseled square, SE Cor. of catch basin on S. side of Apollo St., 32.5' W. to line of back of east curb of drive north, 11' E. to line of end of curb north, 103.2' ENE. of deflection cor., N. Line. Lot 9, Block A, Abilene Place Add. Elev. = 1432.98 NAVD88

BENCHMARK #2:
Chiseled plus cut inside chiseled square, top of curb, most southerly SW Cor. of parking lot, 17.6' S. to back of N. curb of Apollo St., 34.7' WSW to centerline of light pole base, 114.3' E. & 143.5' N. of NW Cor., Reserve "A", Abilene Place Add. Elev. = 1435.32 NAVD88

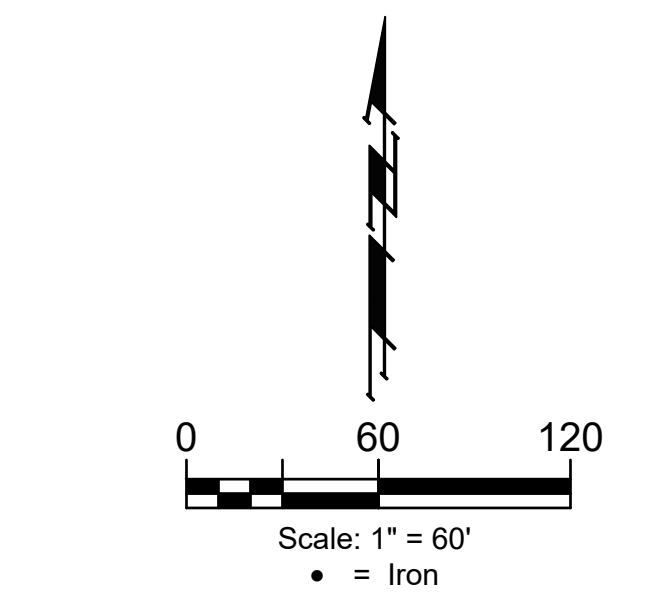
Maintain 50'x12' Gravel Construction Entrance.



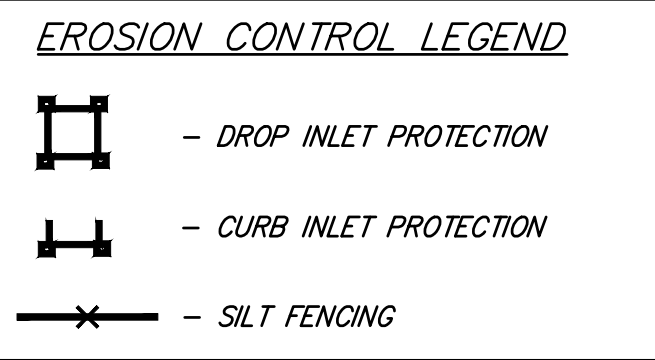
EROSION CONTROL MEASURE	INSTALL	MAINTAIN
CONSTRUCTION ENTRANCE (EA)	0	1

* ALL EXISTING BMPs INCLUDING CONSTRUCTION ENTRANCE, SEDIMENT BARRIERS, SILT FENCE, CUT-OFF TRENCH, AND EROSION CONTROL MAT SHALL BE MAINTAINED AND REPAIRED IF NECESSARY.

NOTES:
1. Contractor shall make sure all erosion control is in place before project is accepted. This plan represents the minimum standard. Any additional erosion control measures shall be installed by the Contractor as needed.
2. All areas disturbed during construction shall be seeded, mulched, and fertilized as per Cover Sheet General Notes.



Existing Ground - - - - - 1364 - - - - -



BAUGHMAN COMPANY

315 Ellis St.
Wichita, KS 67211
316-262-7271
BaughmanCo.com

ABILENE PLACE ADDITION PHASE

EROSION CONTROL

WATER DISTRIBUTION SYSTEM

PROJECT NUMBER:

DESIGN: ENG DRAWN: JAK
DATE: Apr. 19, 2022

SHEET **6** OF **13**

File: E:\Projects\Abilene Place Addition_20-03-P540\Engineering\Phase 1\WTR MAIN\167th St Water Main_21-03-EB80.dwg