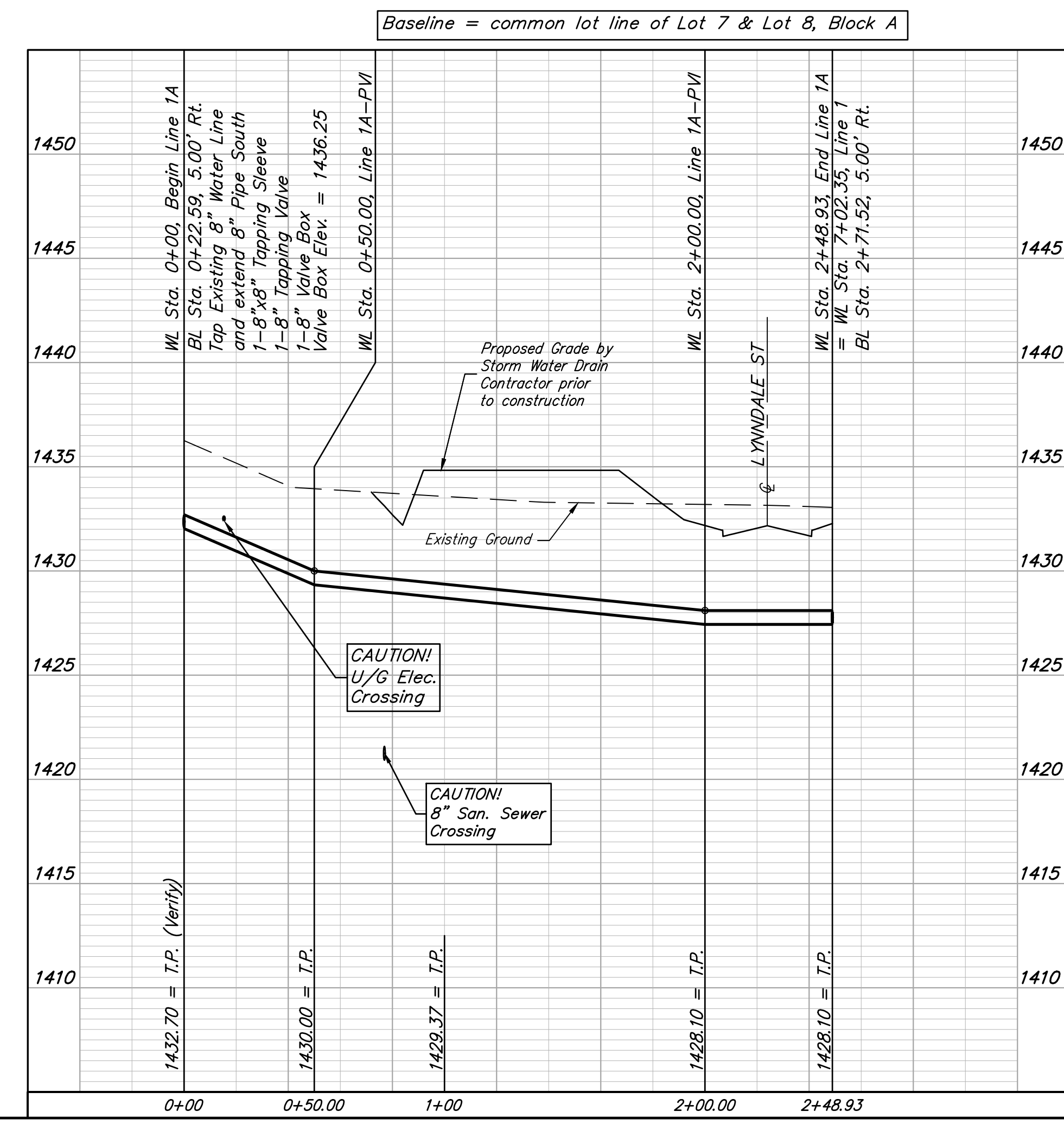
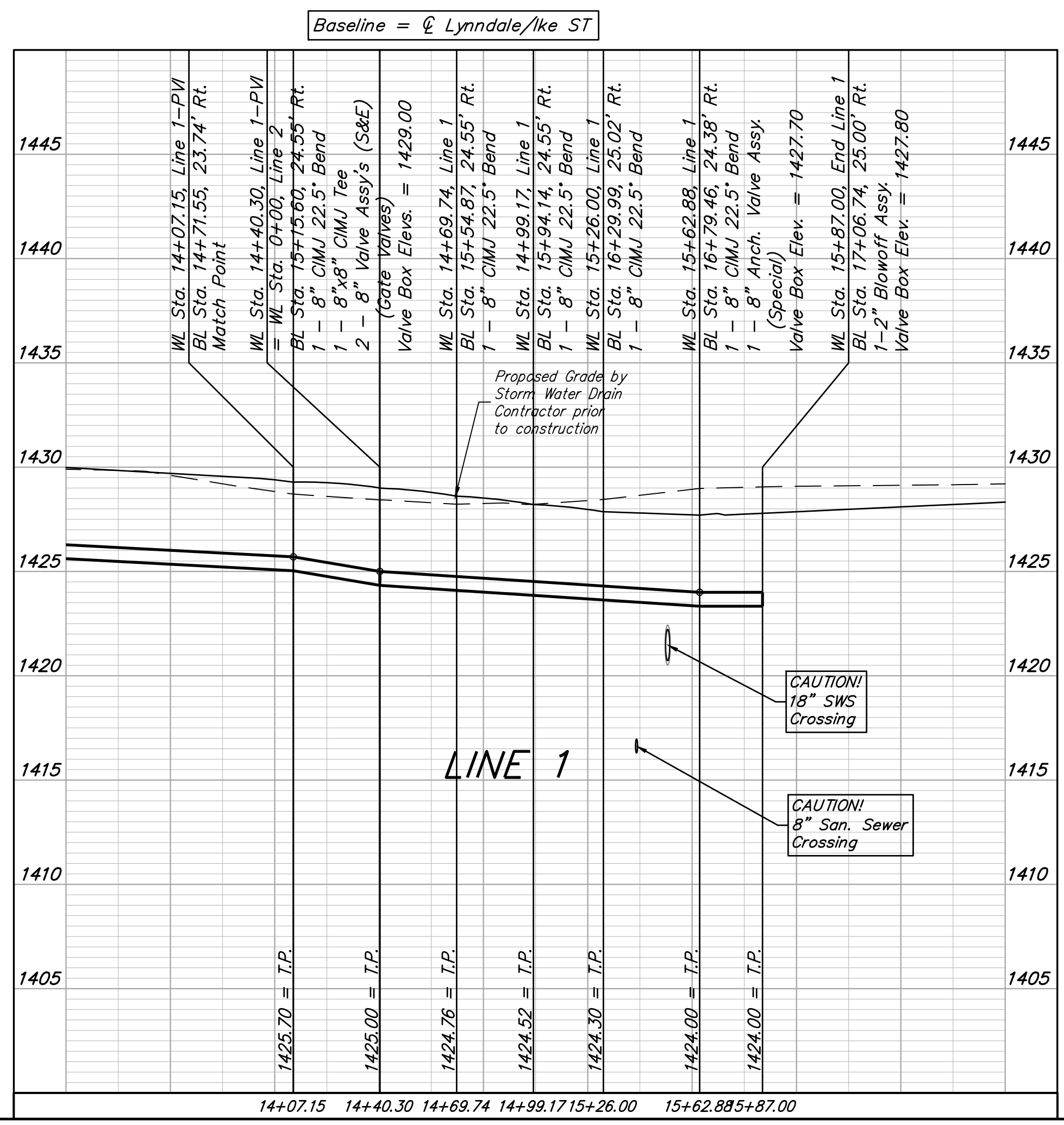
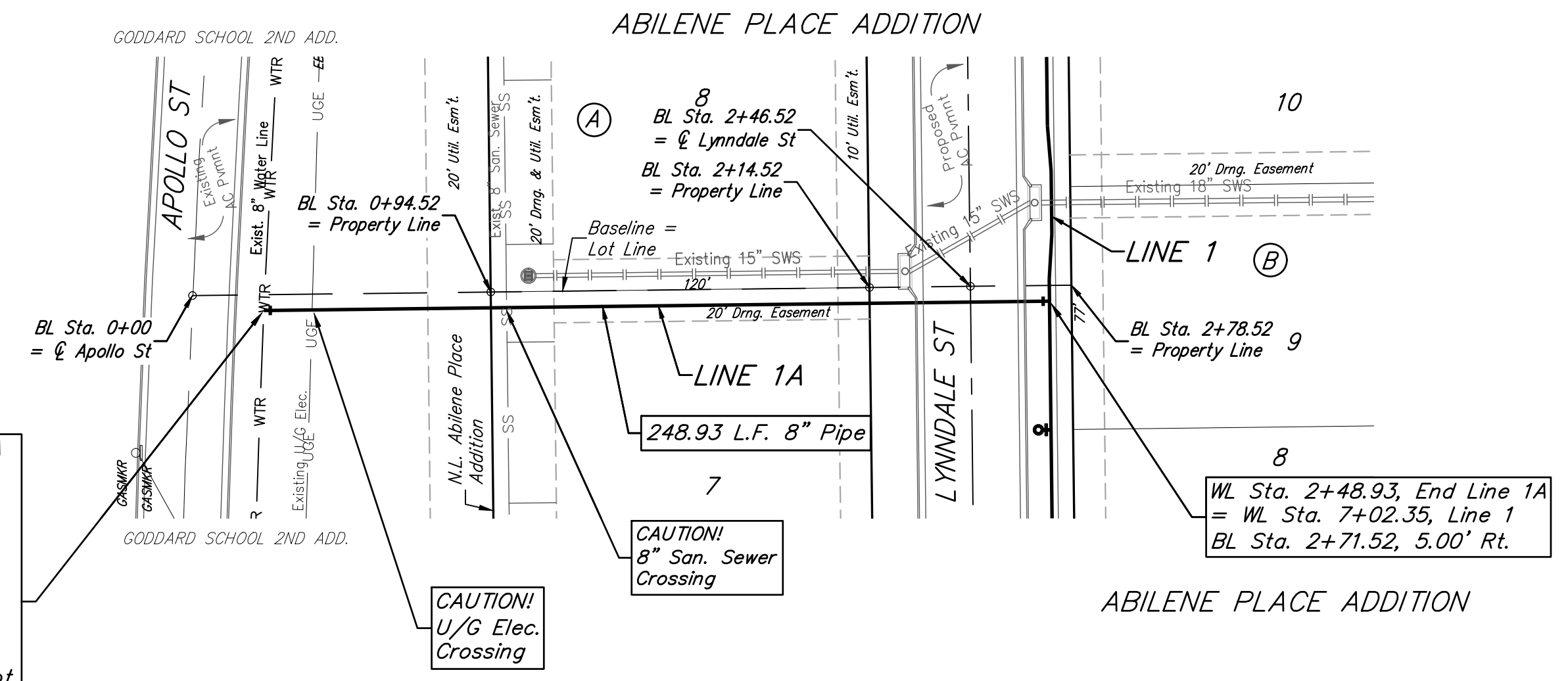
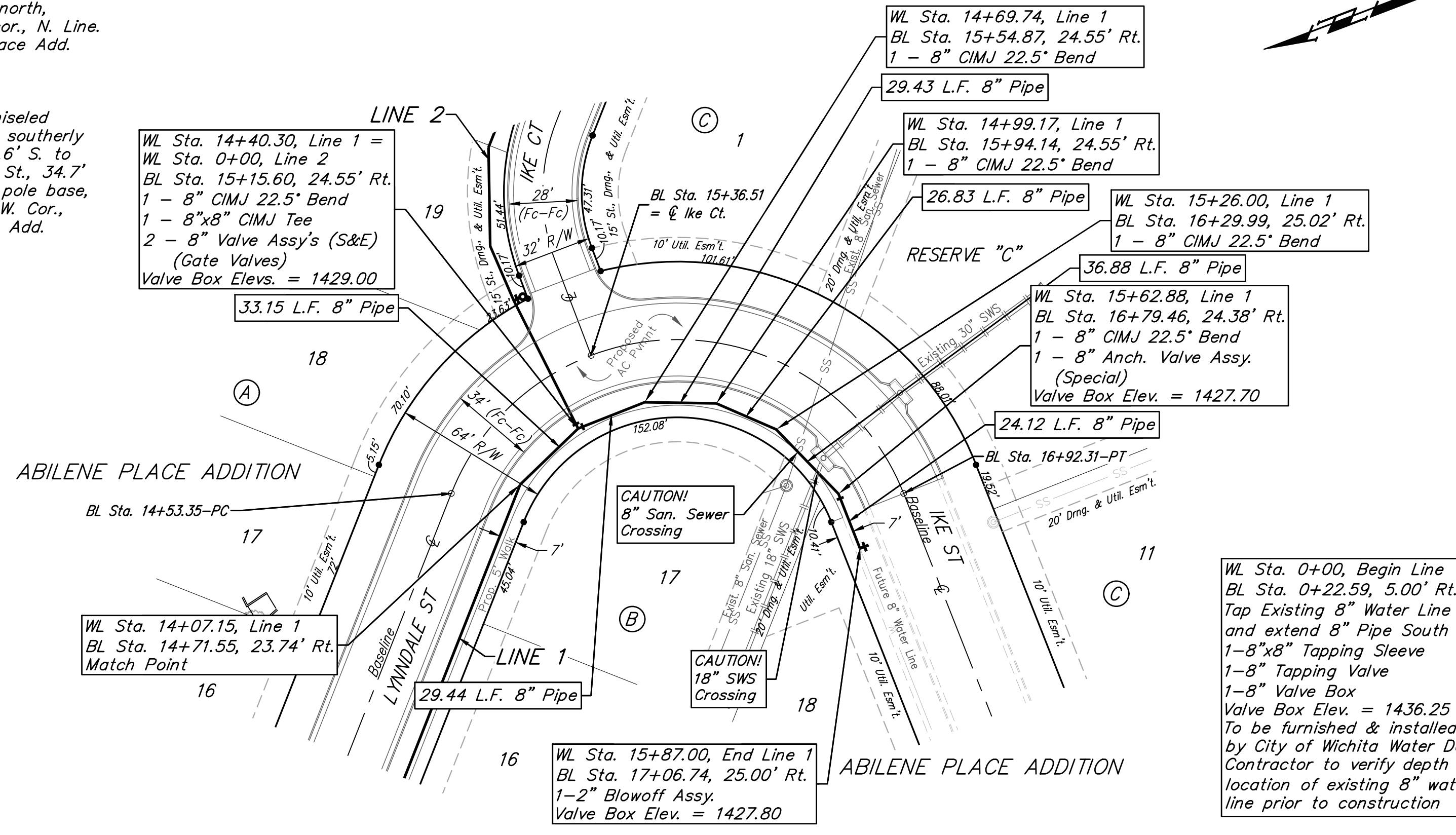
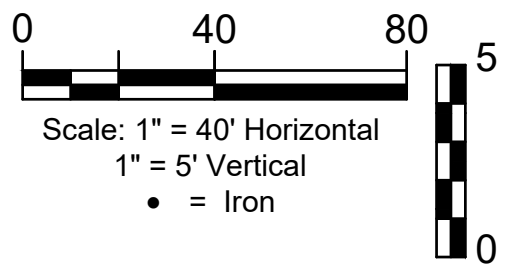


**BENCHMARK #1:**  
Chiseled plus cut inside chiseled square, SE Cor. of catch basin on S. side of Apollo St., 32.5' W. to line of back of east curb of drive north, 11' E. to line of end of curb north, 103.2' ENE. of deflection cor., N. Line. Lot 9, Block A, Abilene Place Add. Elev. = 1432.98 NAVD88

**BENCHMARK #2:**  
Chiseled plus cut inside chiseled square, top of curb, most southerly SW Cor. of parking lot, 17.6' S. to back of N. curb of Apollo St., 34.7' WSW to centerline of light pole base, 114.3' E. & 143.5' N. of NW Cor., Reserve "A", Abilene Place Add. Elev. = 1435.32 NAVD88



**BAUGHMAN COMPANY**  
 315 Ellis St.  
 Wichita, KS 67211  
 316-262-7271  
 BaughmanCo.com

ABILENE PLACE ADDITION  
 PHASE I

**LINE 1 & LINE 1A**

WATER DISTRIBUTION SYSTEM

PROJECT NUMBER:  
448-2021-016516

DESIGN: DMV DRAWN: JAK

DATE: June 23, 2022

SHEET 6 OF 16

File: E:\Projects\Abilene Place Addition\_20-03-P540\Engineering\Phase 1\WTR\_21-03-E876\WTR\_21-03-E876.dwg