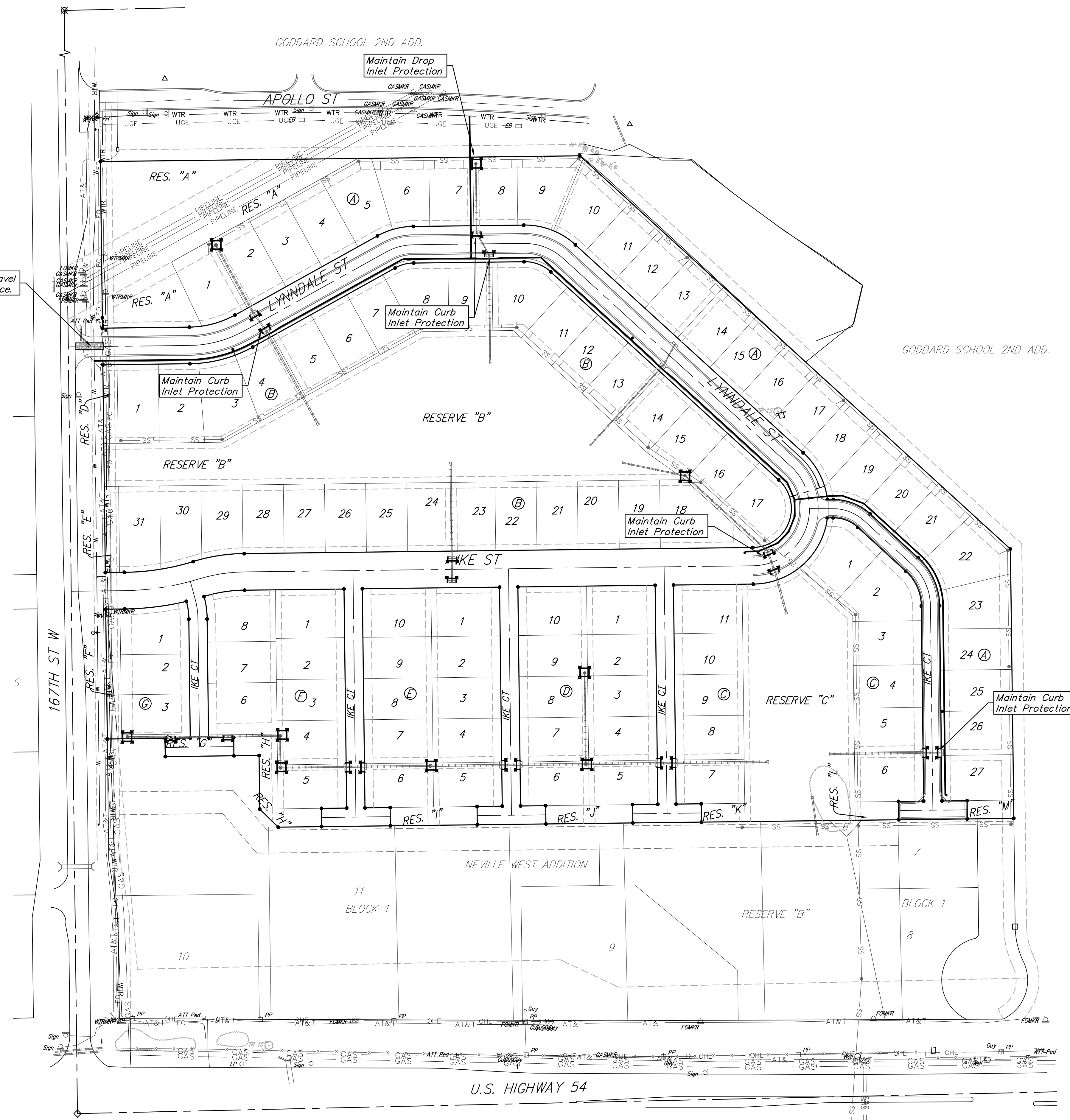


**BENCHMARK #1:**  
Chiseled plus cut inside chiseled square, SE Cor. of catch basin on S. side of Apollo St., 32.5' W. to line of back of east curb of drive north, 11' E. to line of end of curb north, 103.2' ENE. of deflection cor., N. Line. Lot 9, Block A, Abilene Place Add. Elev. = 1432.98 NAVD88

**BENCHMARK #2:**  
Chiseled plus cut inside chiseled square, top of curb, most southerly SW Cor. of parking lot, 17.6' S. to back of N. curb of Apollo St., 34.7' WSW to centerline of light pole base, 114.3' E. & 143.5' N. of NW Cor., Reserve "A", Abilene Place Add. Elev. = 1435.32 NAVD88

Maintain 50'x12' Gravel Construction Entrance.



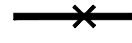


EROSION CONTROL MEASURE	INSTALL	MAINTAIN
CONSTRUCTION ENTRANCE (EA)	0	1
CURB INLET PROTECTION (EA)	0	5
DROP INLET PROTECTION (EA)	0	1

\* ALL EXISTING BMPs INCLUDING CONSTRUCTION ENTRANCE, SEDIMENT BARRIERS, SILT FENCE, CUT-OFF TRENCH, AND EROSION CONTROL MAT SHALL BE MAINTAINED AND REPAIRED IF NECESSARY.

**NOTES:**  
1. Contractor shall make sure all erosion control is in place before project is accepted. This plan represents the minimum standard. Any additional erosion control measures shall be installed by the Contractor as needed.  
2. All areas disturbed during construction shall be seeded, mulched, and fertilized as per Cover Sheet General Notes.

**EROSION CONTROL LEGEND**

-  - DROP INLET PROTECTION
-  - CURB INLET PROTECTION
-  - SILT FENCING



**BAUGHMAN COMPANY**

315 Ellis St.  
Wichita, KS 67211  
316-262-7271  
BaughmanCo.com

---

ABILENE PLACE ADDITION  
PHASE I

**EROSION CONTROL**

WATER DISTRIBUTION SYSTEM

PROJECT NUMBER:  
448-2021-016516

DESIGN: DMV DRAWN: JAK  
DATE: June 23, 2022

SHEET **9** OF **16**

File: E:\Projects\Abilene Place Addition\_20-03-P540\Engineering\Phase 1\WTR\_21-03-E876.dwg