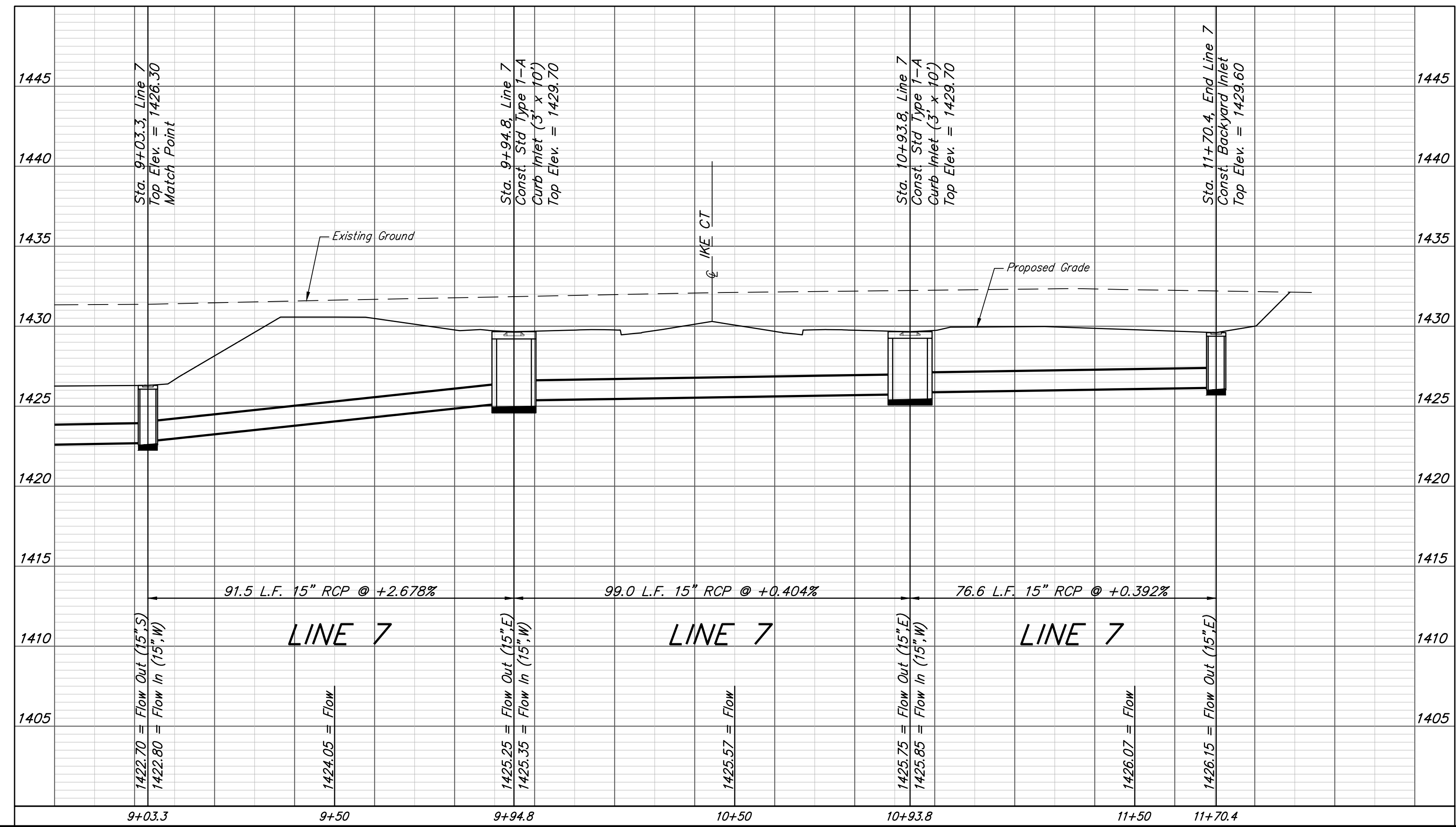
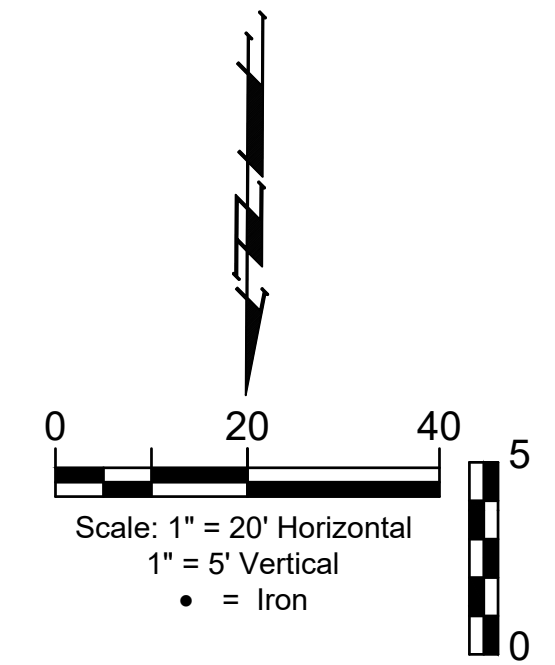
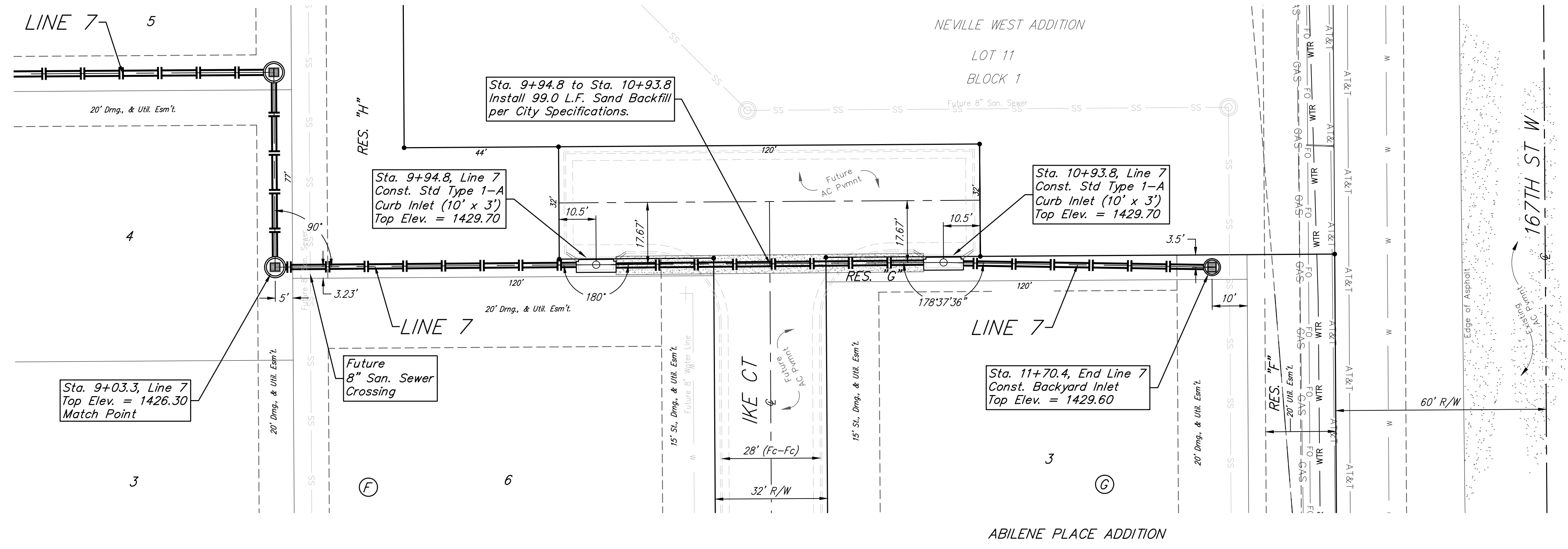


BENCHMARK #1:
Chiseled plus cut inside chiseled square, SE Cor. of catch basin on S side of Apollo St., 32.5' W. to line of back of east curb of drive north, 11' E. to line of end of curb north, 103.2' ENE. of deflection cor., N. Line. Lot 9, Block A, Abilene Place Add.
Elev. = 1432.98 NAVD88

BENCHMARK #2:
Chiseled plus cut inside chiseled square, top of curb, most southerly SW Cor. of parking lot, 17.6' S. to back of N. curb of Apollo St., 34.7' WSW to centerline of light pole base, 114.3' E. & 143.5' N. of NW Cor., Reserve "A", Abilene Place Add.
Elev. = 1435.32 NAVD88

ABILENE PLACE ADDITION





BAUGHMAN COMPANY

315 Ellis St.
Wichita, KS 67211
316-262-7271
BaughmanCo.com

ABILENE PLACE ADDITION

LINE 7

STORM WATER DRAIN IMPROVEMENTS

PROJECT NUMBER:

DESIGN: DMV DRAWN: JAK
DATE: Apr. 19, 2022

SHEET **11** OF **30**

File: E:\Projects\Abilene Place Addition_20-03-P540\Engineering\Phase 1\SWD_21-03-E678\SWD_21-03-E678.dwg