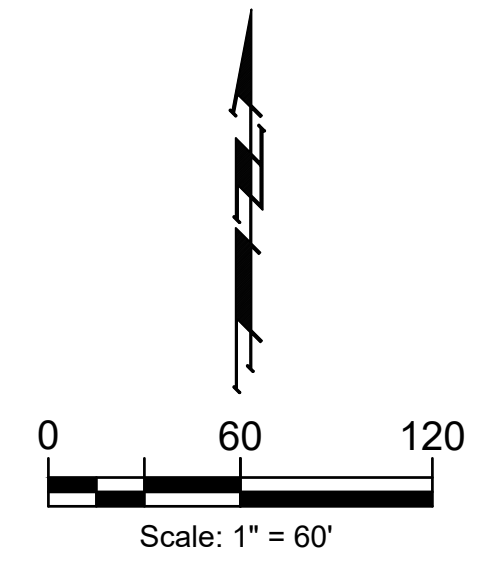


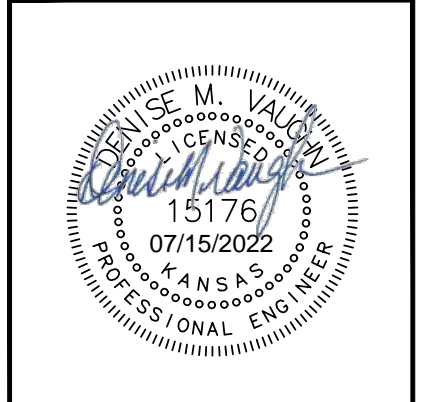
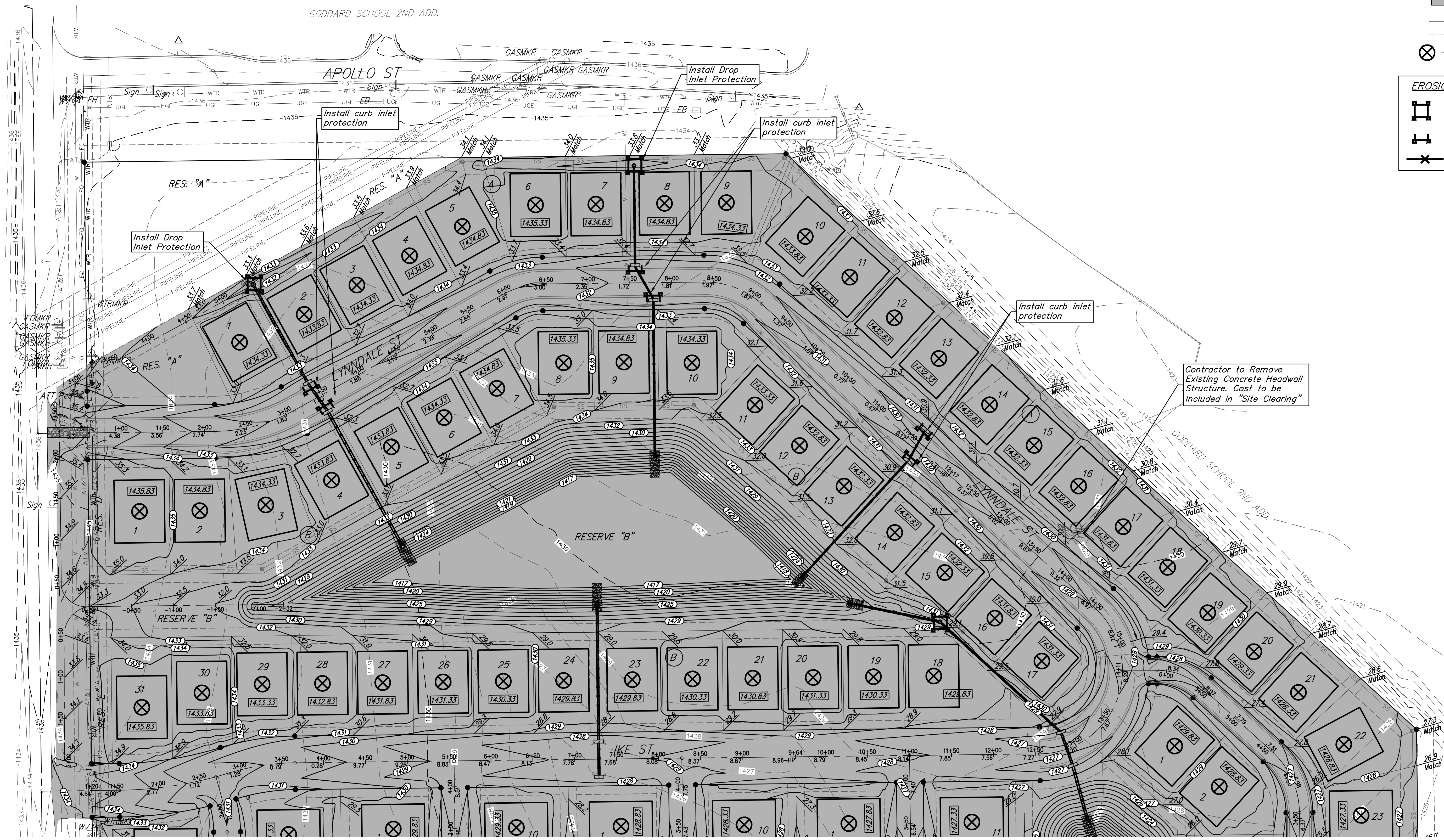
BENCHMARK #1:
 Chiseled plus cut inside chiseled square, SE Cor. of catch basin on S. side of Apollo St., 32.5' W. to line of back of east curb of drive north, 11' E. to line of end of curb north, 103.2' ENE. of deflection cor., N. Line, Lot 9, Block A, Abilene Place Add.
 Elev. = 1432.98 NAVD88

BENCHMARK #2:
 Chiseled plus cut inside chiseled square, top of curb, most southerly SW Cor. of parking lot, 17.6' S. to back of N. curb of Apollo St., 34.7' WSW to centerline of light pole base, 114.3' E. & 143.5' N. of NW Cor., Reserve "A", Abilene Place Add.
 Elev. = 1435.32 NAVD88



- Area to be graded
- 1350 Proposed Grade
- 1350 Existing Grade
- ⊗ - Compaction Testing Location

- EROSION CONTROL LEGEND**
- DROP INLET PROTECTION
 - CURB INLET PROTECTION
 - SILT FENCING



B

BAUGHMAN COMPANY

315 Ellis St.
 Wichita, KS 67211
 316-262-7271
 BaughmanCo.com

ABILENE PLACE ADDITION

MASS GRADING/ EROSION CONTROL

STORM WATER DRAIN IMPROVEMENTS

PROJECT NUMBER:

DESIGN: DMV DRAWN: JAK
 DATE: Apr. 19, 2022

SHEET **15** OF **30**

File: E:\Projects\Abilene Place Addition_20-03-P540\Engineering\Phase 1\SWD_21-03-EB78\SWD_21-03-EB78.dwg