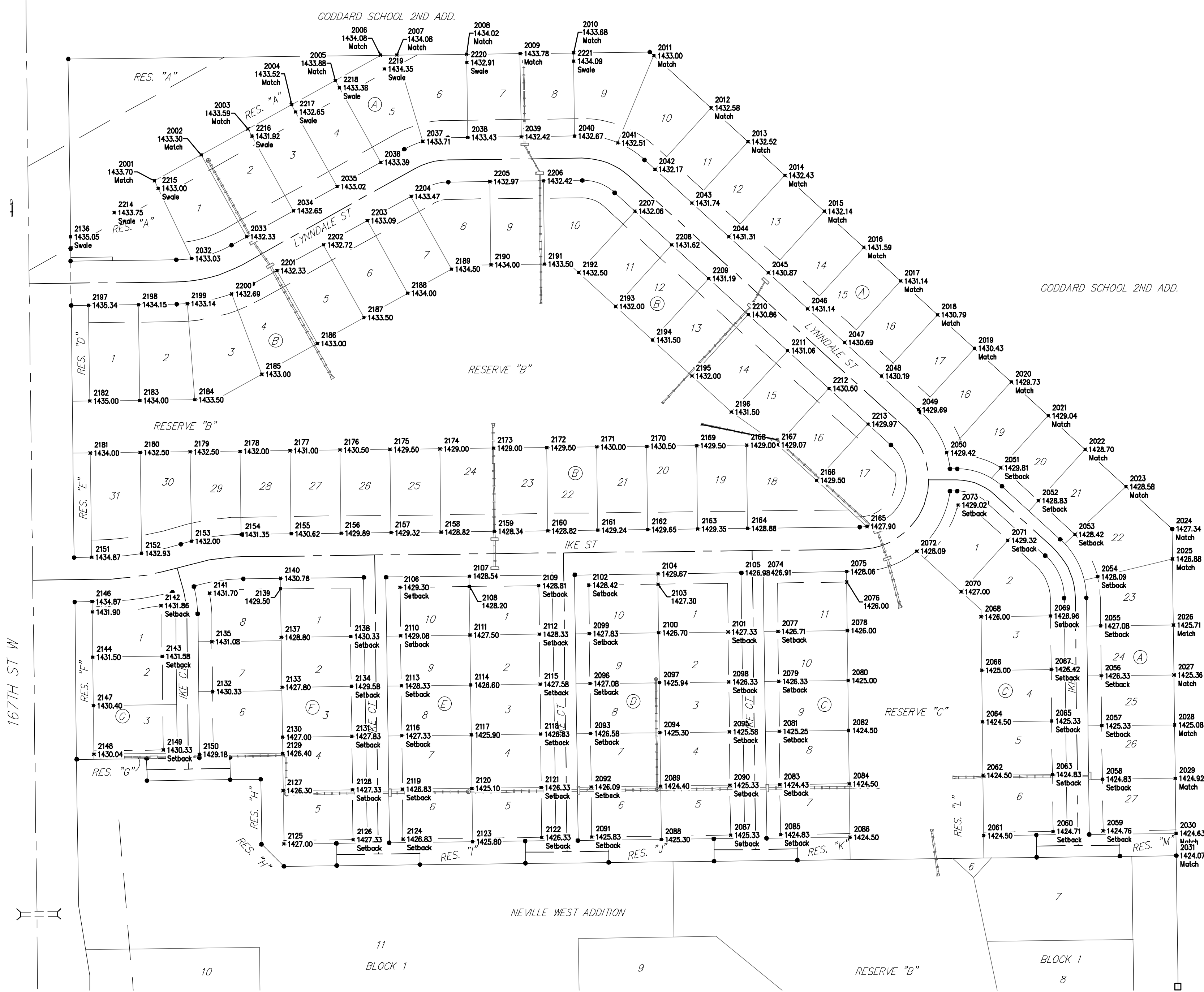


**BENCHMARK #1:**  
Chiseled plus cut inside chiseled square, SE Cor. of catch basin on S side of Apollo St., 32.5' W. to line of back of east curb of drive north, 11' E. to line of end of curb north, 103.2' ENE. of deflection cor., N. Line. Lot 9, Block A, Abilene Place Add.  
Elev. = 1432.98 NAVD88

**BENCHMARK #2:**  
Chiseled plus cut inside chiseled square, top of curb, most southerly SW Cor. of parking lot, 17.6' S. to back of N. curb of Apollo St., 34.7' WSW to centerline of light pole base, 114.3' E. & 143.5' N. of NW Cor., Reserve "A", Abilene Place Add.  
Elev. = 1435.32 NAVD88



Point #	Northing	Easting	Elev	Description
2001	1678446.67	1591859.22	1433.70	Match
2002	1678484.06	1591926.53	1433.30	Match
2003	1678521.45	1591993.85	1433.59	Match
2004	1678556.41	1592056.79	1433.52	Match
2005	1678591.37	1592119.73	1433.88	Match
2006	1678627.74	1592185.22	1434.08	Match
2007	1678662.02	1592208.72	1434.08	Match
2008	1678698.22	1592308.23	1434.02	Match
2009	1678736.13	1592396.22	1433.78	Match
2010	1678773.05	1592463.21	1433.69	Match
2011	1678810.45	1592578.91	1433.00	Match
2012	1678851.67	1592661.36	1432.58	Match
2013	1678893.13	1592714.53	1432.52	Match
2014	1678934.58	1592767.10	1432.43	Match
2015	1678976.02	1592824.57	1432.14	Match
2016	1679017.45	1592881.43	1431.59	Match
2017	1679058.90	1592938.60	1431.14	Match
2018	1679100.34	1592995.77	1430.79	Match
2019	1679141.78	1593052.95	1430.43	Match
2020	1679183.22	1593109.12	1429.73	Match
2021	1679224.66	1593166.30	1429.04	Match
2022	1679266.10	1593223.47	1428.70	Match
2023	1679307.54	1593280.64	1428.58	Match
2024	1679348.98	1593337.81	1427.34	Match
2025	1679390.42	1593394.98	1426.88	Match
2026	1679431.86	1593452.15	1425.71	Match
2027	1679473.30	1593509.32	1425.36	Match
2028	1679514.74	1593566.49	1425.08	Match
2029	1679556.18	1593623.66	1424.92	Match
2030	1679597.62	1593680.83	1424.63	Match
2031	1679639.06	1593738.00	1424.07	Match
2032	1679680.50	1593795.17	1433.03	Match
2033	1679721.94	1593852.34	1432.33	Match
2034	1679763.38	1593909.51	1432.65	Match
2035	1679804.82	1593966.68	1433.02	Match
2036	1679846.26	1594023.85	1433.39	Match
2037	1679887.70	1594081.02	1433.71	Match
2038	1679929.14	1594138.19	1433.43	Match
2039	1679970.58	1594195.36	1433.42	Match
2040	1680012.02	1594252.53	1432.61	Match
2041	1680053.46	1594309.70	1432.17	Match
2042	1680094.90	1594366.87	1431.87	Match
2043	1680136.34	1594424.04	1431.74	Match
2044	1680177.78	1594481.21	1431.31	Match
2045	1680219.22	1594538.38	1430.87	Match
2046	1680260.66	1594595.55	1431.14	Match
2047	1680302.10	1594652.72	1430.69	Match
2048	1680343.54	1594709.89	1430.19	Match
2049	1680384.98	1594767.06	1429.69	Match
2050	1680426.42	1594824.23	1429.42	Match
2051	1680467.86	1594881.40	1429.81	Match
2052	1680509.30	1594938.57	1429.81	Match
2053	1680550.74	1594995.74	1429.81	Match
2054	1680592.18	1595052.91	1429.81	Match
2055	1680633.62	1595109.08	1429.81	Match
2056	1680675.06	1595166.25	1429.81	Match
2057	1680716.50	1595223.42	1429.81	Match
2058	1680757.94	1595280.59	1429.81	Match
2059	1680799.38	1595337.76	1429.81	Match
2060	1680840.82	1595394.93	1429.81	Match
2061	1680882.26	1595452.10	1429.81	Match
2062	1680923.70	1595509.27	1429.81	Match
2063	1680965.14	1595566.44	1429.81	Match
2064	1681006.58	1595623.61	1429.81	Match
2065	1681048.02	1595680.78	1429.81	Match
2066	1681089.46	1595737.95	1429.81	Match
2067	1681130.90	1595795.12	1429.81	Match
2068	1681172.34	1595852.29	1429.81	Match
2069	1681213.78	1595909.46	1429.81	Match
2070	1681255.22	1595966.63	1429.81	Match
2071	1681296.66	1596023.80	1429.81	Match
2072	1681338.10	1596080.97	1429.81	Match
2073	1681379.54	1596138.14	1429.81	Match
2074	1681420.98	1596195.31	1429.81	Match
2075	1681462.42	1596252.48	1429.81	Match
2076	1681503.86	1596309.65	1429.81	Match
2077	1681545.30	1596366.82	1429.81	Match
2078	1681586.74	1596423.99	1429.81	Match
2079	1681628.18	1596481.16	1429.81	Match
2080	1681669.62	1596538.33	1429.81	Match

Point #	Northing	Easting	Elev	Description
2081	1677653.13	1592759.65	1425.23	Setback
2082	1677654.33	1592859.64	1424.50	Setback
2083	1677655.53	1592959.63	1424.43	Setback
2084	1677656.73	1593059.62	1424.50	Setback
2085	1677657.93	1593159.61	1424.83	Setback
2086	1677659.13	1593259.60	1424.50	Setback
2087	1677660.33	1593359.59	1425.33	Setback
2088	1677661.53	1593459.58	1425.33	Setback
2089	1677662.73	1593559.57	1425.33	Setback
2090	1677663.93	1593659.56	1425.33	Setback
2091	1677665.13	1593759.55	1425.33	Setback
2092	1677666.33	1593859.54	1425.33	Setback
2093	1677667.53	1593959.53	1425.33	Setback
2094	1677668.73	1594059.52	1425.33	Setback
2095	1677669.93	1594159.51	1425.33	Setback
2096	1677671.13	1594259.50	1425.33	Setback
2097	1677672.33	1594359.49	1425.33	Setback
2098	1677673.53	1594459.48	1425.33	Setback
2099	1677674.73	1594559.47	1425.33	Setback
2100	1677675.93	1594659.46	1425.33	Setback
2101	1677677.13	1594759.45	1425.33	Setback
2102	1677678.33	1594859.44	1425.33	Setback
2103	1677679.53	1594959.43	1425.33	Setback
2104	1677680.73	1595059.42	1425.33	Setback
2105	1677681.93	1595159.41	1425.33	Setback
2106	1677683.13	1595259.40	1425.33	Setback
2107	1677684.33	1595359.39	1425.33	Setback
2108	1677685.53	1595459.38	1425.33	Setback
2109	1677686.73	1595559.37	1425.33	Setback
2110	1677687.93	1595659.36	1425.33	Setback
2111	1677689.13	1595759.35	1425.33	Setback
2112	1677690.33	1595859.34	1425.33	Setback
2113	1677691.53	1595959.33	1425.33	Setback
2114	1677692.73	1596059.32	1425.33	Setback
2115	1677693.93	1596159.31	1425.33	Setback
2116	1677695.13	1596259.30	1425.33	Setback
2117	1677696.33	1596359.29	1425.33	Setback
2118	1677697.53	1596459.28	1425.33	Setback
2119	1677698.73	1596559.27	1425.33	Setback
2120	1677699.93	1596659.26	1425.33	Setback
2121	1677701.13	1596759.25	1425.33	Setback
2122	1677702.33	1596859.24	1425.33	Setback
2123	1677703.53	1596959.23	1425.33	Setback
2124	1677704.73	1597059.22	1425.33	Setback
2125	1677705.93	1597159.21	1425.33	Setback
2126	1677707.13	1597259.20	1425.33	Setback
2127	1677708.33	1597359.19	1425.33	Setback
2128	1677709.53	1597459.18	1425.33	Setback
2129	1677710.73	1597559.17	1425.33	Setback
2130	1677711.93	1597659.16	1425.33	Setback
2131	1677713.13	1597759.15	1425.33	Setback
2132	1677714.33	1597859.14	1425.33	Setback
2133	1677715.53	1597959.13	1425.33	Setback
2134	1677716.73	1598059.12	1425.33	Setback
2135	1677717.93	1598159.11	1425.33	Setback
2136	1677719.13	1598259.10	1425.33	Setback
2137	1677720.33	1598359.09	1425.33	Setback
2138	1677721.53	1598459.08	1425.33	Setback
2139	1677722.73	1598559.07	1425.33	Setback
2140	1677723.93	1598659.06	1425.33	Setback
2141	1677725.13	1598759.05	1425.33	Setback
2142	1677726.33	1598859.04	1425.33	Setback
2143	1677727.53	1598959.03	1425.33	Setback
2144	1677728.73	1599059.02	1425.33	Setback
2145	1677729.93	1599159.01	1425.33	Setback
2146	1677731.13	1599259.00	1425.33	Setback
2147	1677732.33	1599359.00	1425.33	Setback
2148	1677733.53	1599459.00	1425.33	Setback
2149	1677734.73	1599559.00	1425.33	Setback
2150	1677735.93	1599659.00	1425.33	Setback
2151	1677737.13	1599759.00	1425.33	Setback
2152	1677738.33	1599859.00	1425.33	Setback
2153	1677739.53	1599959.00	1425.33	Setback
2154	1677740.73	1600059.00	1425.33	Setback
2155	1677741.93	1600159.00	1425.33	Setback
2156	1677743.13	1600259.00	1425.33	Setback
2157	1677744.33	1600359.00	1425.33	Setback
2158	1677745.53	1600459.00	1425.33	Setback
2159	1677746.73	1600559.00	1425.33	Setback
2160	1677747.93	1600659.00	1425.33	Setback

Point #	Northing	Easting	Elev	Description
2161	1677943.02	1592498.16	1429.24	
2162	1677943.88	1592570.15	1429.65	
2163	1677944.74	1592642.15	1429.35	
2164	1677945.61	1592714.14	1428.88	
2165	1677946.46	1592786.14	1427.90	
2166	1677947.32	1592858.14	1428.50	
2167	1677948.18	1592930.14	1429.07	
2168	1677949.04	1593002.14	1429.62	
2169	1677949.90	1593074.14	1430.17	
2170	1677950.76	1593146.14	1430.72	
2171	1677951.62	1593218.14	1431.27	
2172	1677952.48	1593290.14	1431.82	
2173	1677953.34	1593362.14	1432.37	
2174	1677954.20	1593434.14	1432.92	
2175	1677955.06	1593506.14	1433.47	
2176	1677955.92	1593578.14	1434.02	
2177	1677956.78	1593650.14	1434.57	
2178	1677957.64	1593722.14	1435.12	
2179	1677958.50	1593794.14	1435.67	
2180	1677959.36	1593866.14	1436.22	
2181	1677960.22	1593938.14	1436.77	
2182	1677961.08	1594010.14	1437.32	
2183	1677961.94	1594082.14	1437.87	
2184	1677962.80	1594154.14	1438.42	
2185	1677963.66	1594226.14	1438.97	
2186	1677964.52	1594298.14	1439.52	
2187	1677965.38	1594370.14	1440.07	
2188	1677966			