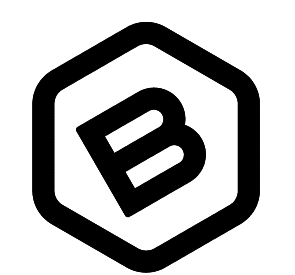
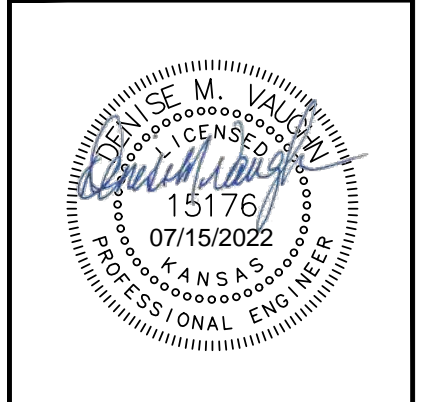
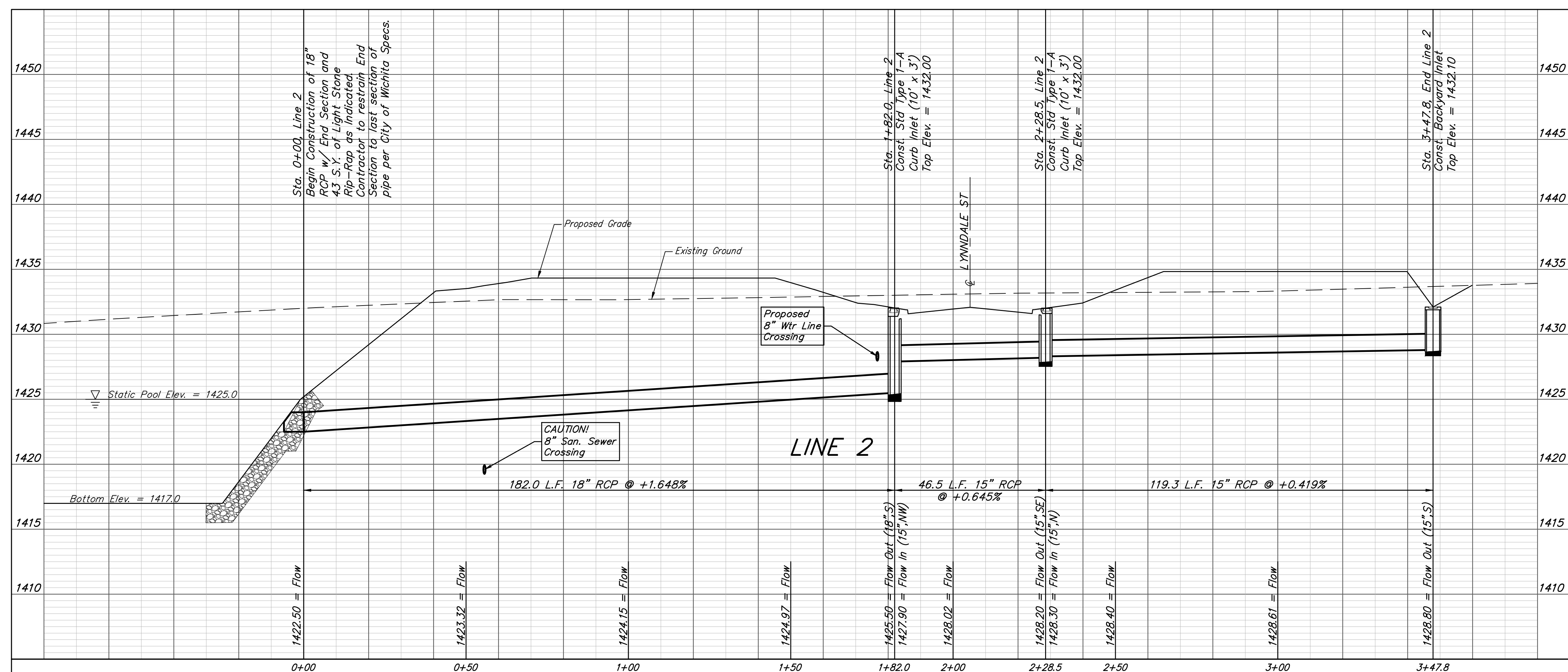
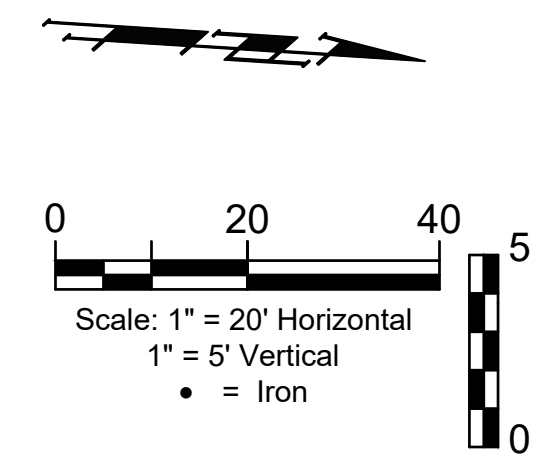
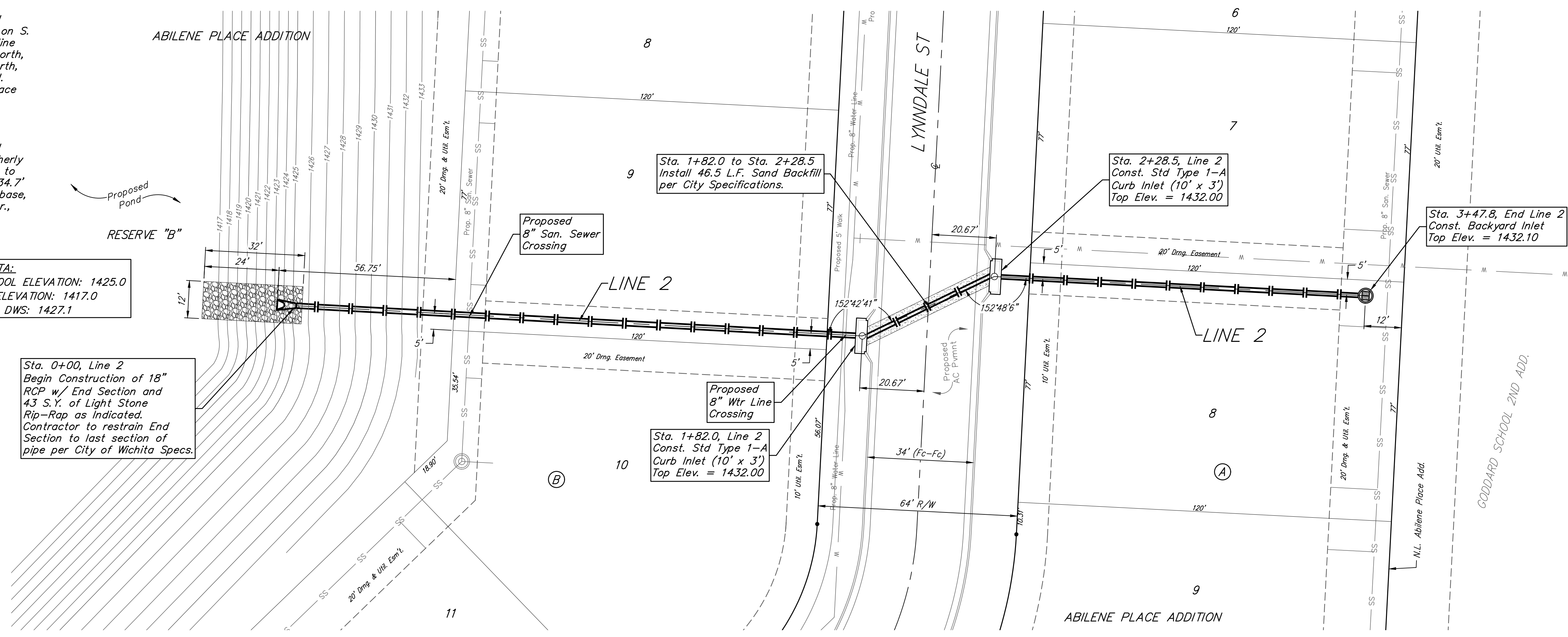


**BENCHMARK #1:**  
Chiseled plus cut inside chiseled square, SE Cor. of catch basin on S. side of Apollo St., 32.5' W. to line of back of east curb of drive north, 11' E. to line of end of curb north, 103.2' ENE. of deflection cor., N. Line. Lot 9, Block A, Abilene Place Add.  
Elev. = 1432.98 NAVD88

**BENCHMARK #2:**  
Chiseled plus cut inside chiseled square, top of curb, most southerly SW Cor. of parking lot, 17.6' S. to back of N. curb of Apollo St., 34.7' WSW to centerline of light pole base, 114.3' E. & 143.5' N. of NW Cor., Reserve "A", Abilene Place Add.  
Elev. = 1435.32 NAVD88

**POND DATA:**  
STATIC POOL ELEVATION: 1425.0  
BOTTOM ELEVATION: 1417.0  
100 YEAR DWS: 1427.1

Sta. 0+00, Line 2  
Begin Construction of 18" RCP w/ End Section and 43 S.Y. of Light Stone Rip-Rap as indicated. Contractor to restrain End Section to last section of pipe per City of Wichita Specs.



**BAUGHMAN COMPANY**  
315 Ellis St.  
Wichita, KS 67211  
316-262-7271  
BaughmanCo.com

ABILENE PLACE ADDITION

**LINE 2**

STORM WATER DRAIN IMPROVEMENTS

PROJECT NUMBER:

DESIGN: DMV DRAWN: JAK

DATE: Apr. 19, 2022

SHEET **3** OF **30**

File: E:\Projects\Abilene Place Addition\_20-03-P540\Engineering\Phase 1\SWD\_21-03-E678\SWD\_21-03-E678.dwg