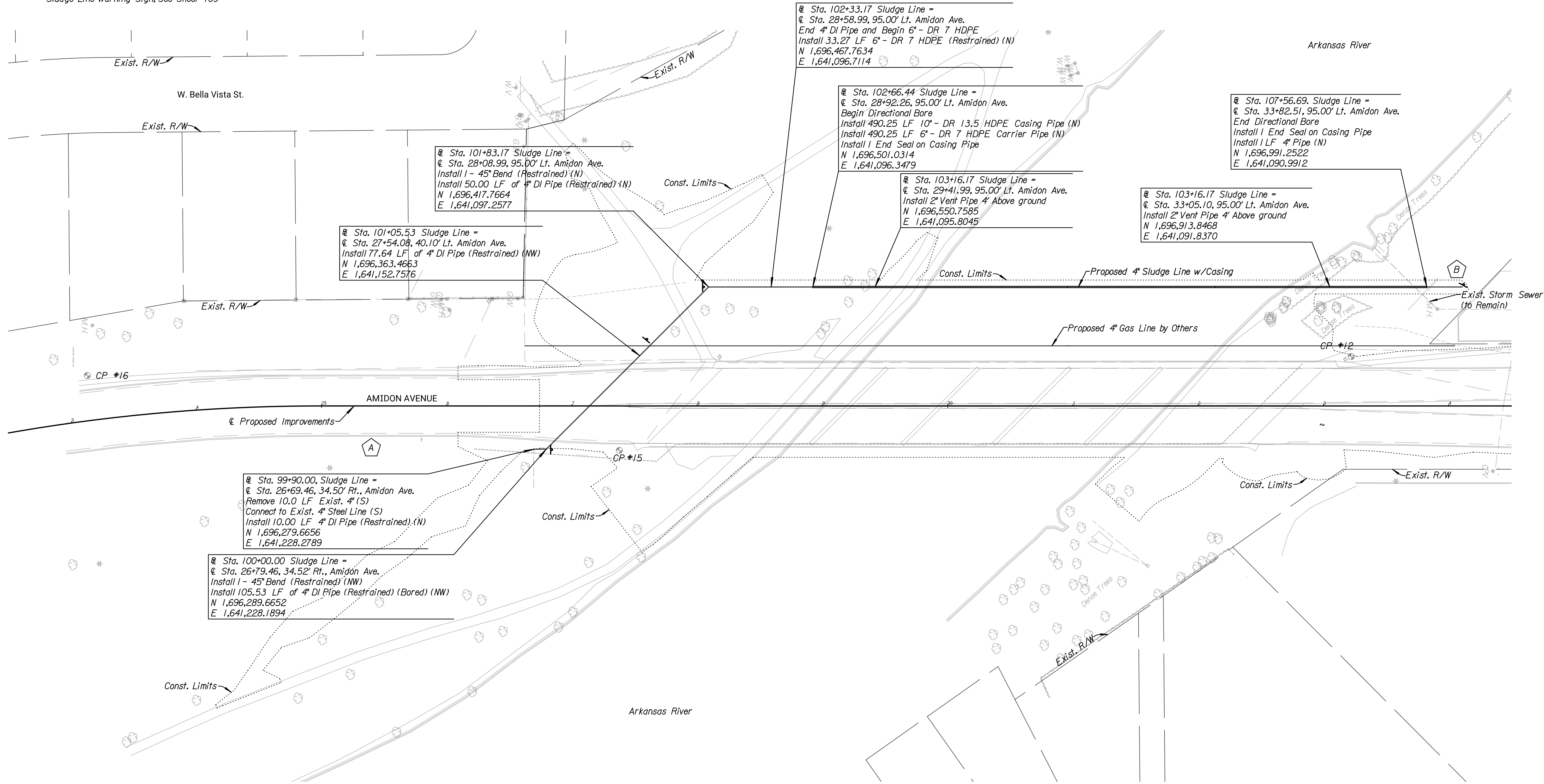
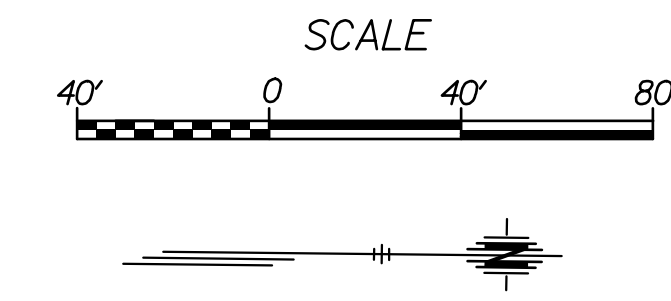


LEGEND

- A** Sludge Line was located by Hyrdro Vac 133.0' south of Light Pole', 10.0' east of back of curb with 31" of cover.
- B** During the design of the project the Sludge Line was unable to be located by Hyrdro Vac in this area. It will be the Contractors responsibility to locate and identify the line prior to Sludge Line Construction.
- Sludge Line Warning Sign, See Sheet 109



Tran Systems
 245 NORTH WACO
 SUITE 222
 WICHITA, KANSAS 67202
 PHONE: 316-303-3000
 FAX: 316-462-5629

CONSULTANTS:

AMIDON AVENUE BRIDGE
 at ARKANSAS RIVER

WICHITA, KANSAS
 CITY OF
WICHITA

REVISIONS:	MARK	DATE	DESCRIPTION

PROJ NO: E1010-40250621
 SCALE: 1"=40'
 DATE: 7/13/2022
 DESIGNED BY: DAN
 DRAWN BY: DAN
 CHECKED BY: MDB

SHEET TITLE:
**4" SLUDGE LINE
 PLAN
 STA. 26+10.00 TO
 STA. 34+00.00**

SHEET NO.
106
 SHEET 106 OF 128

danawaro 21312022 - 105242 AM c:\transystems\pwworking\danawaro\1083577C-SLUDGE-M01-101.DGN

BM - #17
 Set chiseled "□" in sidewalk 1' west of light pole, 55' northeast of guy wire.
 N 1641199
 E 1695803
 Rt. Sta. 21+97.60, Elev. = 1,310.52

CP - #16
 Set 5/8" Rebar
 1. 3' W of W edge of sidewalk
 2. 150' SE of half pipe backyard.
 N 1641173.34
 E 1695922.54
 35.98' Lt., Sta. 23+17.00, Elev. = 1,311.25

CP - #15
 Set 5/8" rebar
 1. 5' E of back of curb
 2. 8' S of SE corner of abut wingwall SE corner of bridge.
 N 1641228.47
 E 1696348.03
 Rt. Sta. Elev. = 1,315.22

CP - #12
 Set 5/8" rebar
 1. 5' NW of lightpole
 2. 4' NW of gas sign at NW corner of bridge.
 N 1696931.58
 E 1641147.18
 39.47' Lt., Sta. 33+22.22, Elev. = 1,314.86