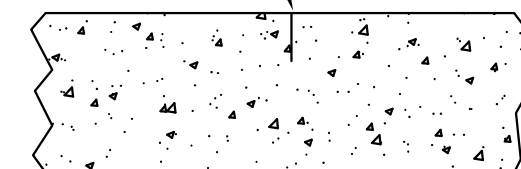
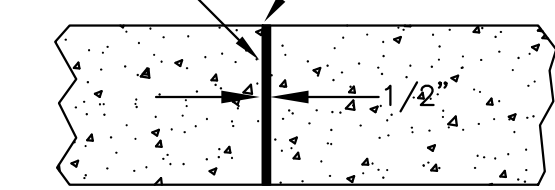


2" DEPTH KNIFE CUT
SHAPE W/ 'VEE' TOOL

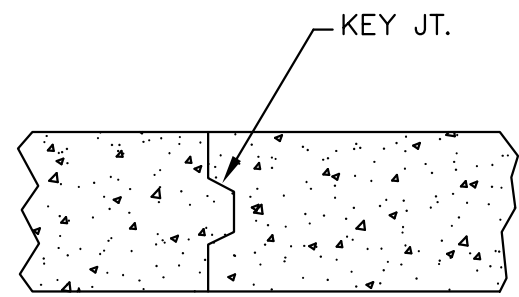
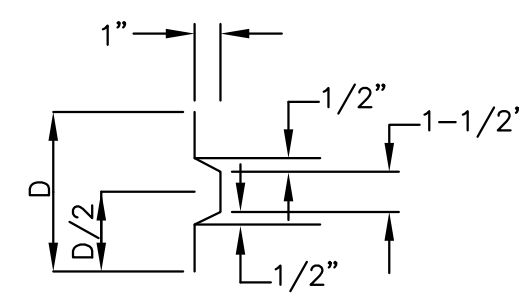


NO SAWN JOINTS
WILL BE ALLOWED

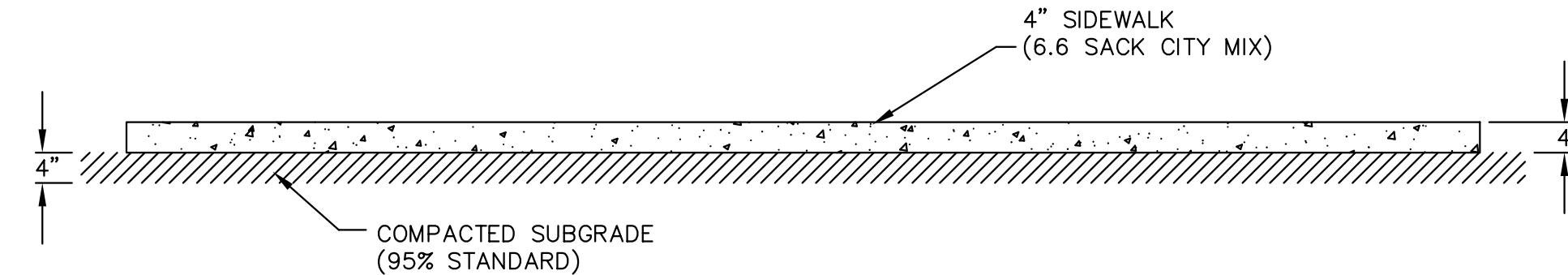
EXPANSION MATERIAL
FULL DEPTH



SHAPE WITH
EDGING TOOL

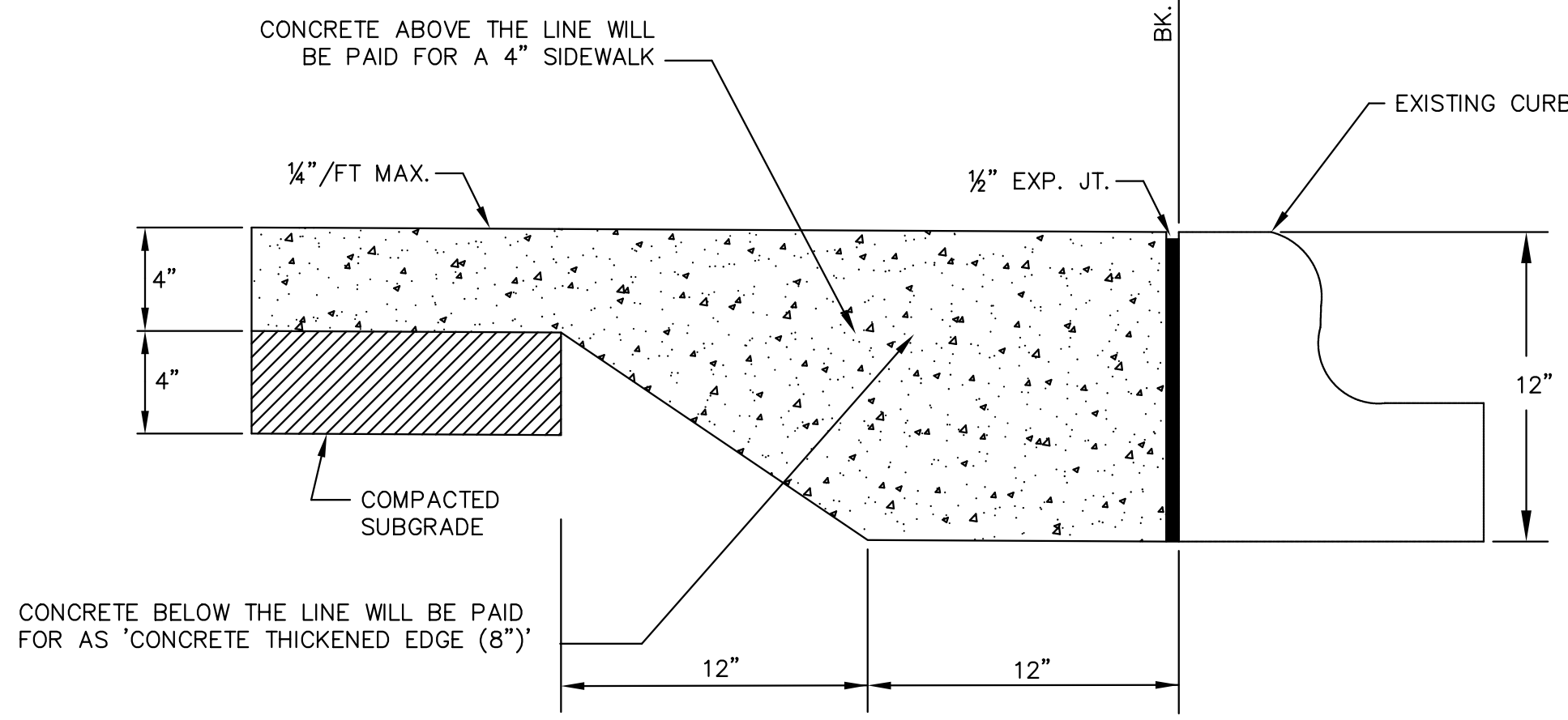


KEY JT.



4" SIDEWALK
(6.6 SACK CITY MIX)

COMPACTED SUBGRADE
(95% STANDARD)



CONCRETE ABOVE THE LINE WILL
BE PAID FOR A 4" SIDEWALK

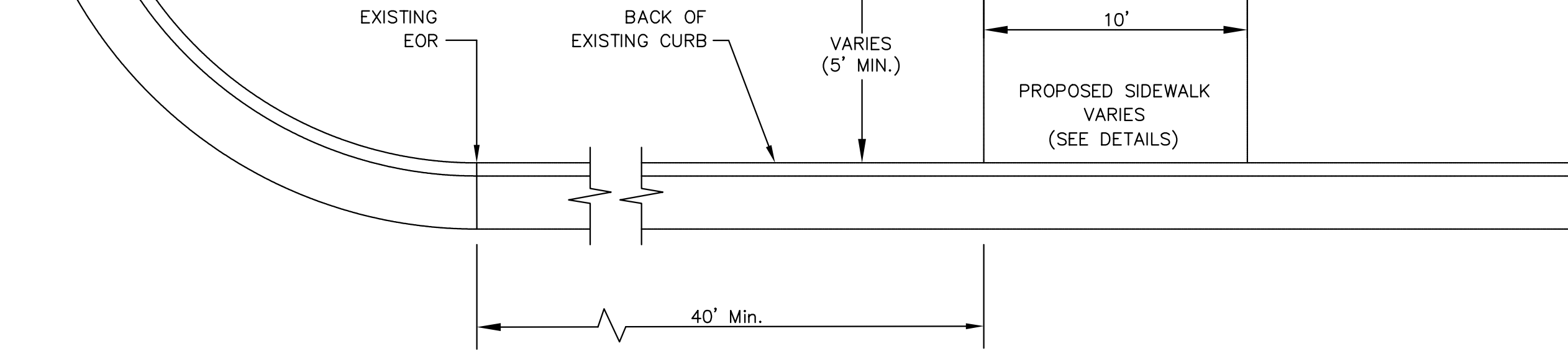
1/4" / FT MAX.

1/2" EXP. JT.

CONCRETE BELOW THE LINE WILL BE PAID
FOR AS "CONCRETE THICKENED EDGE (8")"

BK. CURB

EXISTING CURB



EXISTING SIDEWALK

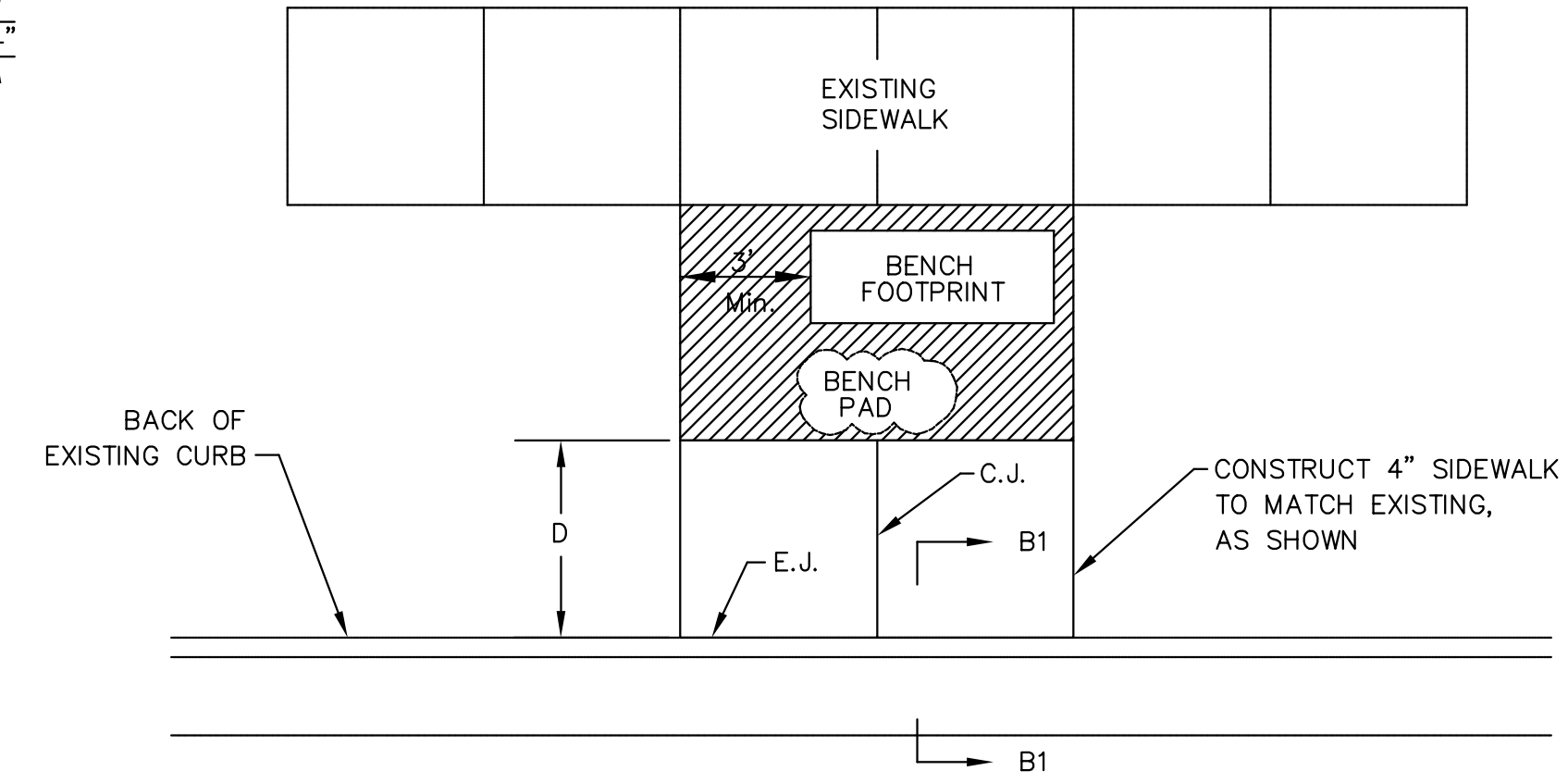
PROPOSED SIDEWALK
VARIES
(SEE DETAILS)

VARIES
(5' MIN.)

EXISTING EOR

BACK OF
EXISTING CURB

40' Min.



EXISTING SIDEWALK

BENCH FOOTPRINT

BENCH PAD

BACK OF
EXISTING CURB

D

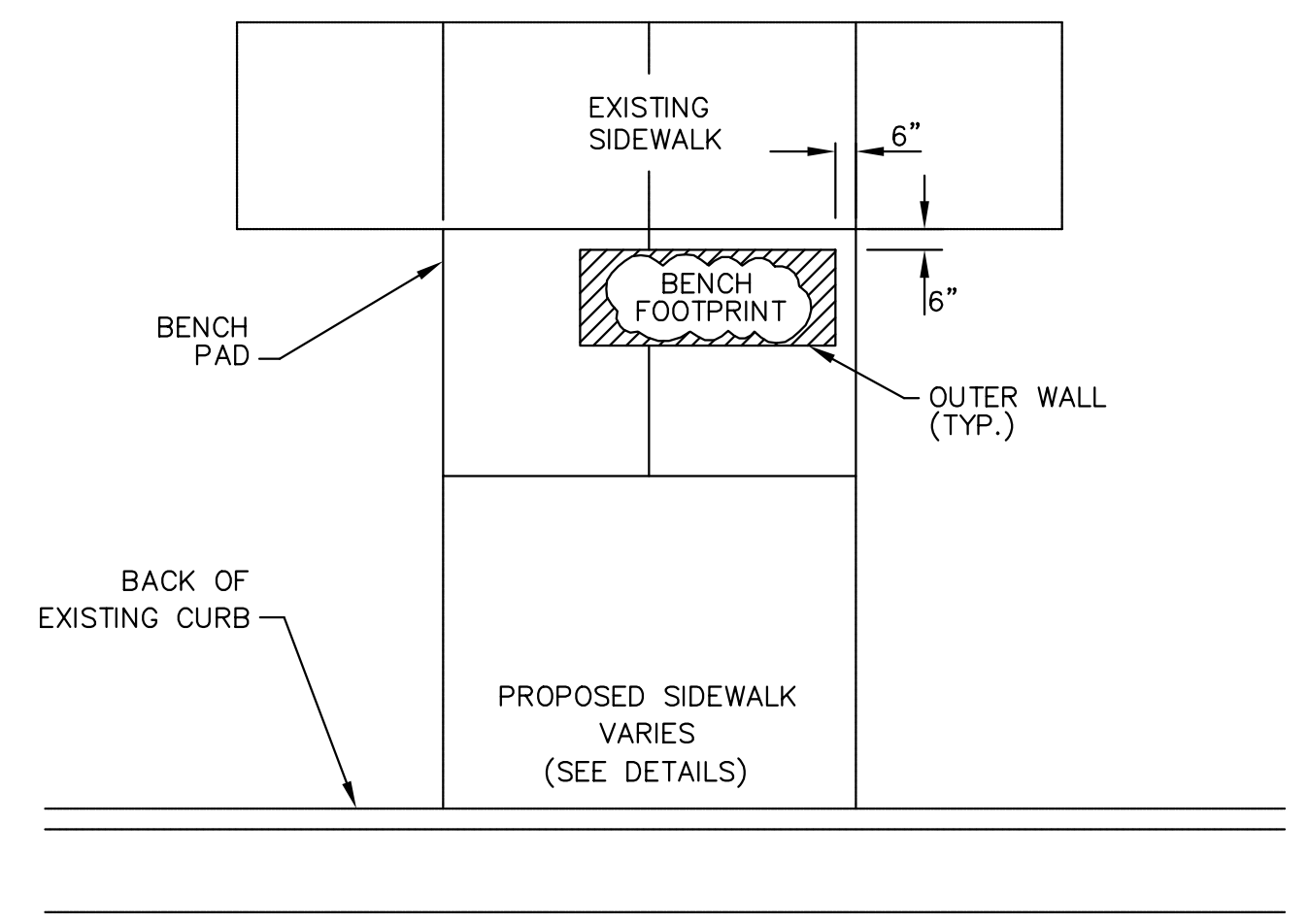
E.J.

C.J.

3' Min.

CONSTRUCT 4" SIDEWALK
TO MATCH EXISTING,
AS SHOWN

B1



EXISTING SIDEWALK

BENCH FOOTPRINT

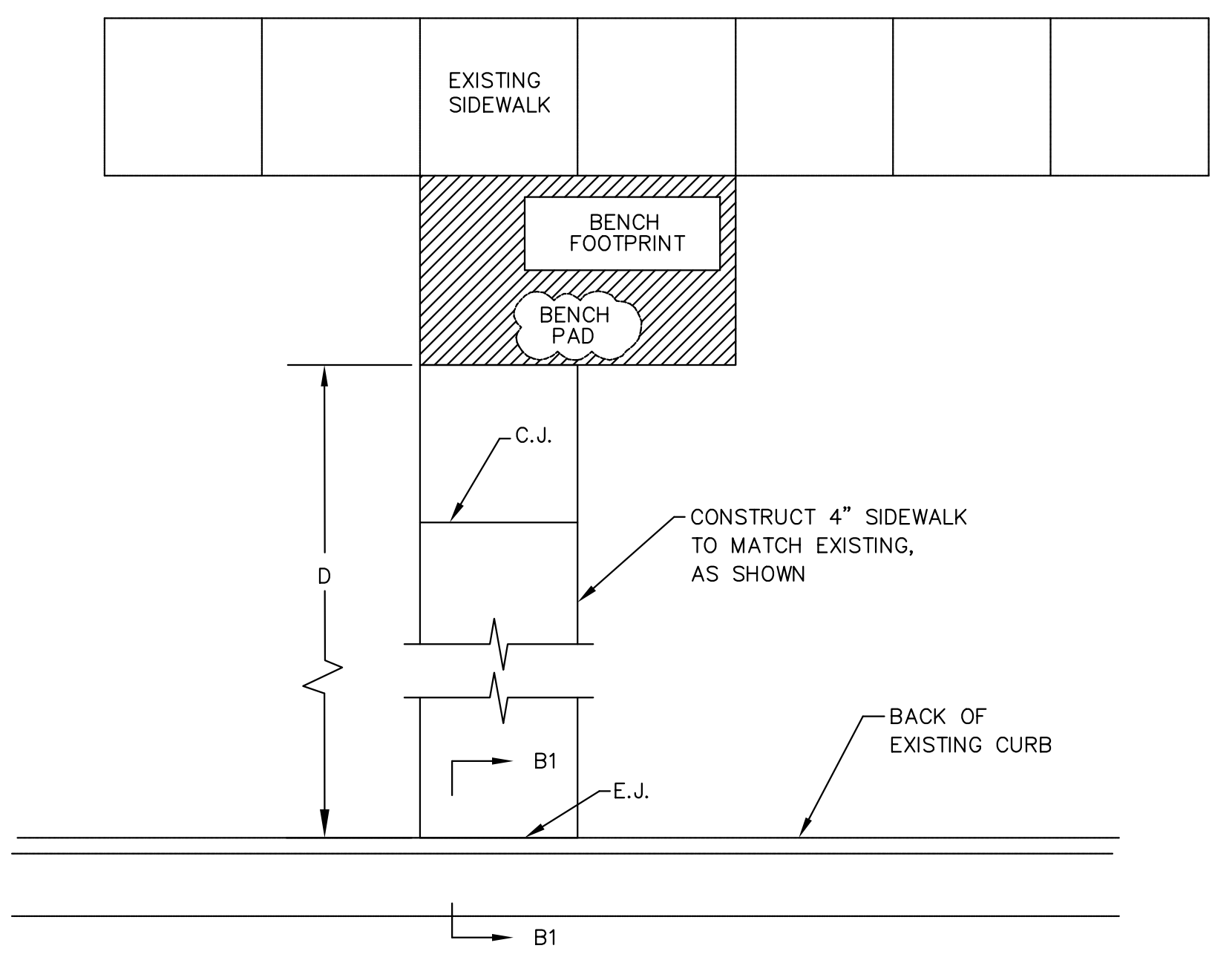
BENCH PAD

BENCH PAD

BACK OF
EXISTING CURB

PROPOSED SIDEWALK
VARIES
(SEE DETAILS)

OUTER WALL
(TYP.)



EXISTING SIDEWALK

BENCH FOOTPRINT

BENCH PAD

C.J.

CONSTRUCT 4" SIDEWALK
TO MATCH EXISTING,
AS SHOWN

D

B1

E.J.

BACK OF
EXISTING CURB

B1

1. IN THE ABSENCE OF EXISTING SIDEWALK, THE MINIMUM 5' SET BACK DISTANCE SHALL BE MAINTAINED.
2. EXCEPT AS OTHERWISE NOTED, SIDEWALK SLOPE MUST NOT EXCEED 5%, IN THE DIRECTION OF TRAVEL, OR 2% PERPENDICULAR TO THE DIRECTION OF TRAVEL.
3. ALL SIDEWALK WITHIN 5' OF BACK-OF-CURB MUST BE CONSTRUCTED AS A LANDING AREA, WITH SLOPES NOT IN EXCESS OF 2% IN ANY DIRECTION.
4. ALL CONCRETE MUST MEET THE REQUIREMENTS OF THE 6.6 SACK CITY MIX.



**FREESTANDING BENCH
STANDARD DETAILS**

CITY ENGINEER
GARY JANZEN, P.E.

| | | |
|----------------------------------|----------------------|-------------------|
| PROJECT NUMBER E1010-40250621 | OCA NUMBER oca no | DATE 7/13/2022 |
|----------------------------------|----------------------|-------------------|

| | |
|--|--------------------------|
| CITY ENGINEER'S OFFICE CITY HALL - SEVENTH FLOOR 455 NORTH MAIN STREET WICHITA, KANSAS 67202-1620 (316) 268-4501 | SHEET 19 19 OF 128 |
|--|--------------------------|

AUGUST 2015