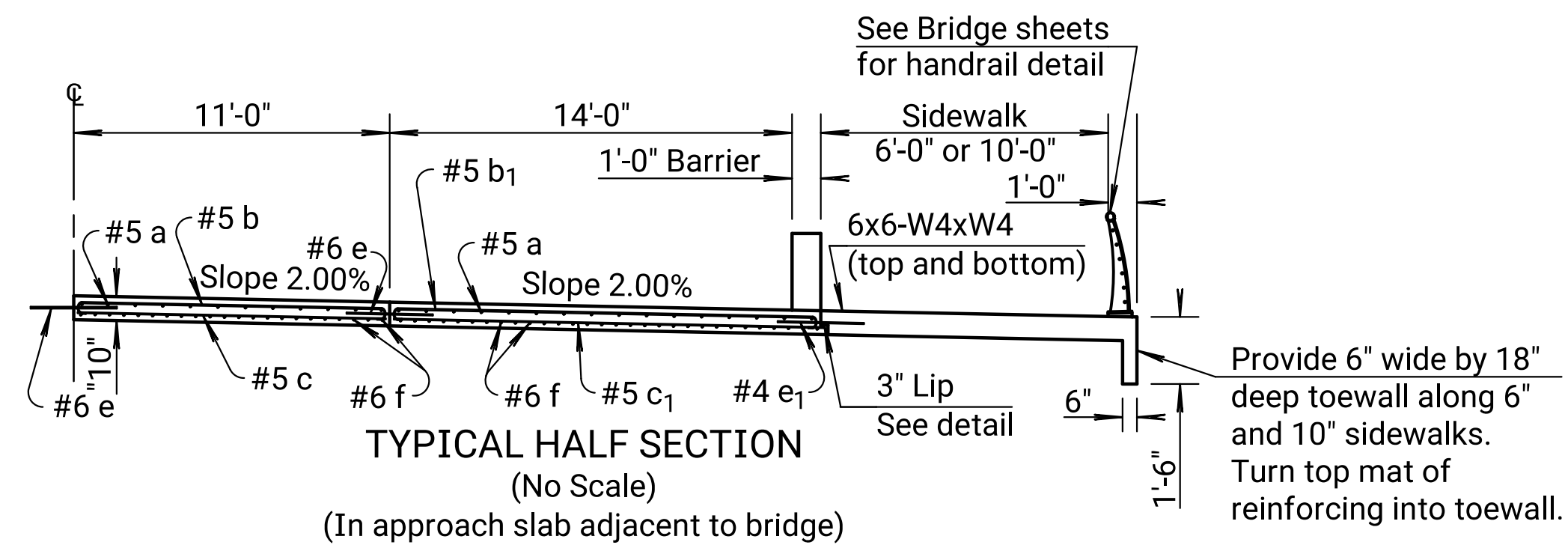
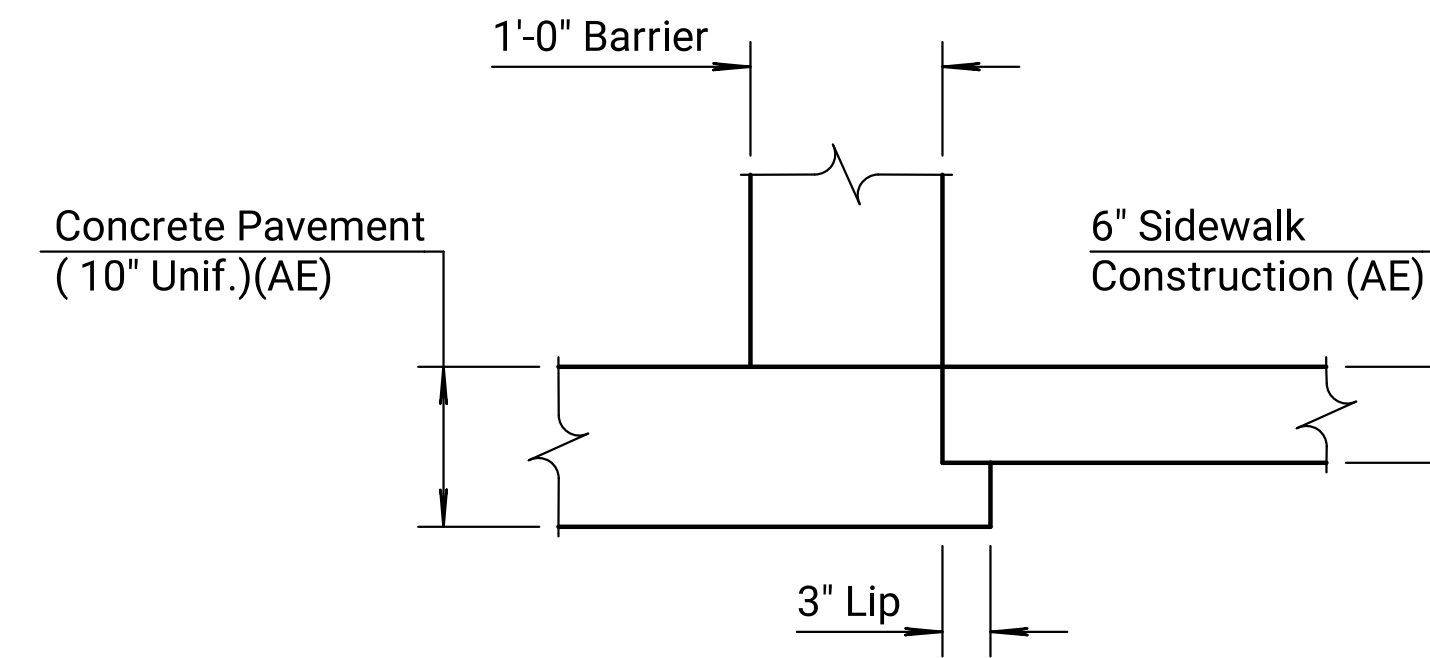


LONGITUDINAL SECTION



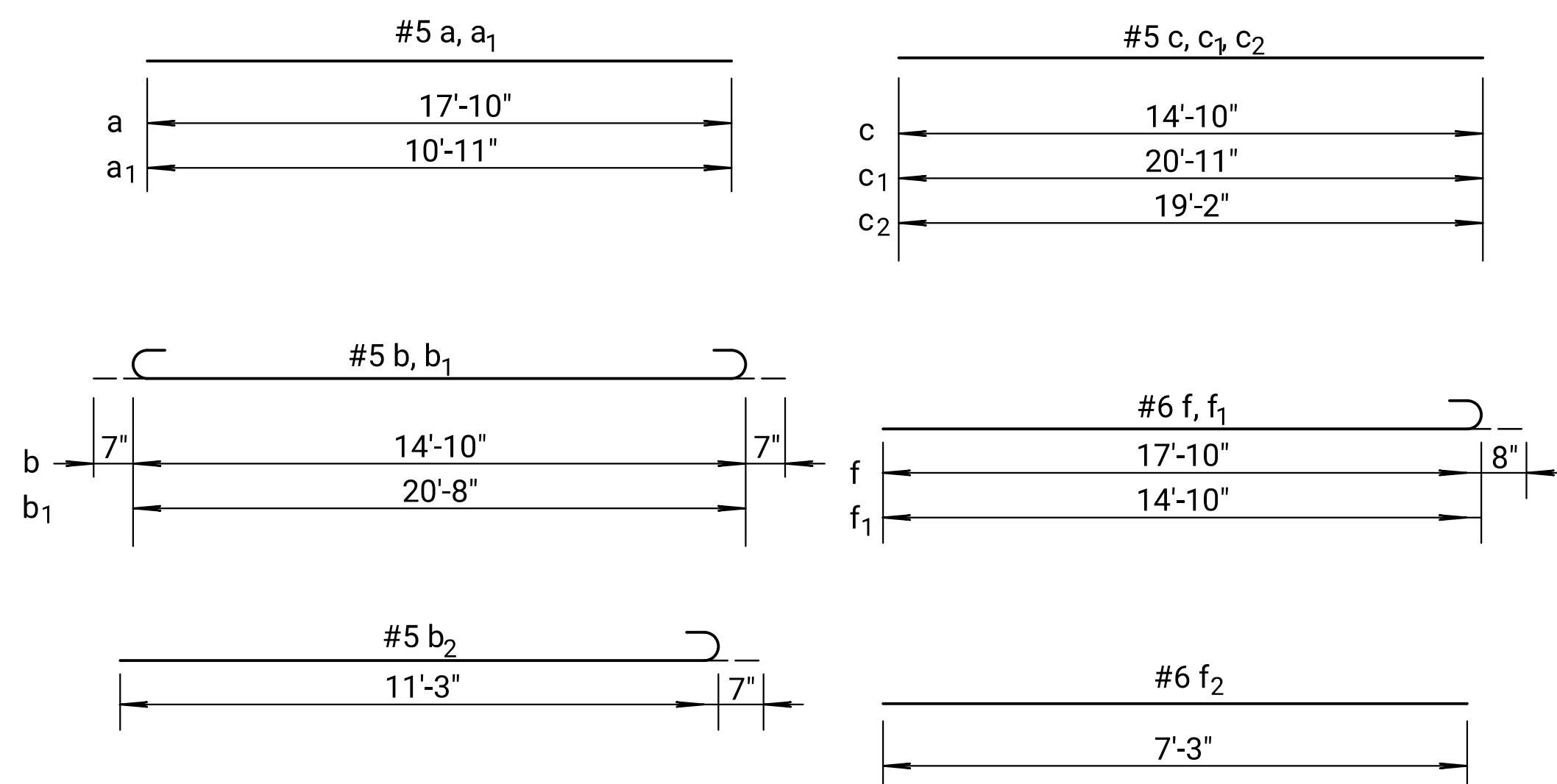
TYPICAL HALF SECTION
(No Scale)

(In approach slab adjacent to bridge)



SECTION AT 3" LIP
(No Scale)

(In approach slab adjacent to road pavement)



Note: All dimensions are out to out on bars unless noted otherwise.

BENDING DIAGRAMS

$\diamond W_1$ and W_2 for Expansion/Pressure Relief Joint width and details See Standard Drawing RD712.

PREPARED BY

 77 NORTH WACO
 SUITE 200
 WICHITA, KANSAS 67203
 PHONE: 316-352-9333

CONSULTANTS:

AMIDON AVE. BRIDGE
 AT ARKANSAS RIVER

WICHITA, KANSAS

 CITY OF WICHITA

REVISIONS:	MARK	DATE	DESCRIPTION

PROJ NO: E1010-4025062
 SCALE:
 DATE: 07/08/2022
 DESIGNED BY: JBM
 DRAWN BY: JBM
 CHECKED BY: WBS

SHEET TITLE:
 APPROACH PAVEMENT DETAILS

SHEET NO.
 23
 SHEET 23 OF 128