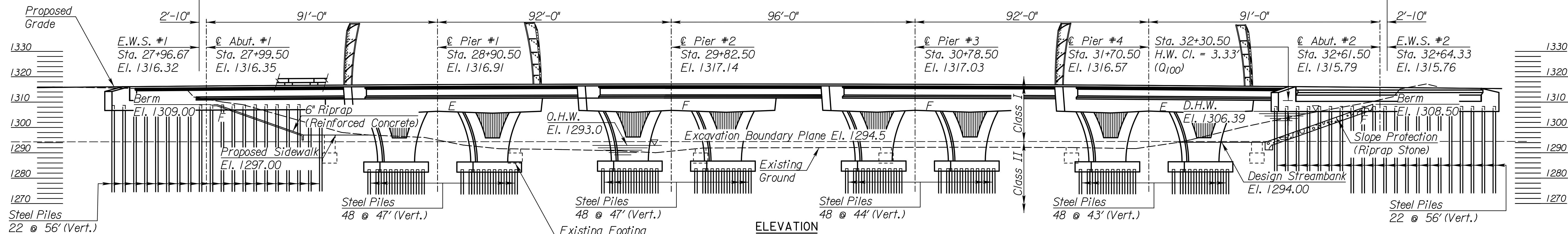


B.M. #14- Set chiseled "Square" @ Meridian Ave in conc. island 3' East of brick sign base. El. = 1310.78

B.M. #17- Set chiseled "Square" in sidewalk 1' W. of light pole 55' NE of Guy Wire. El. = 1310.52

467'-8" End to End of Wearing Surface

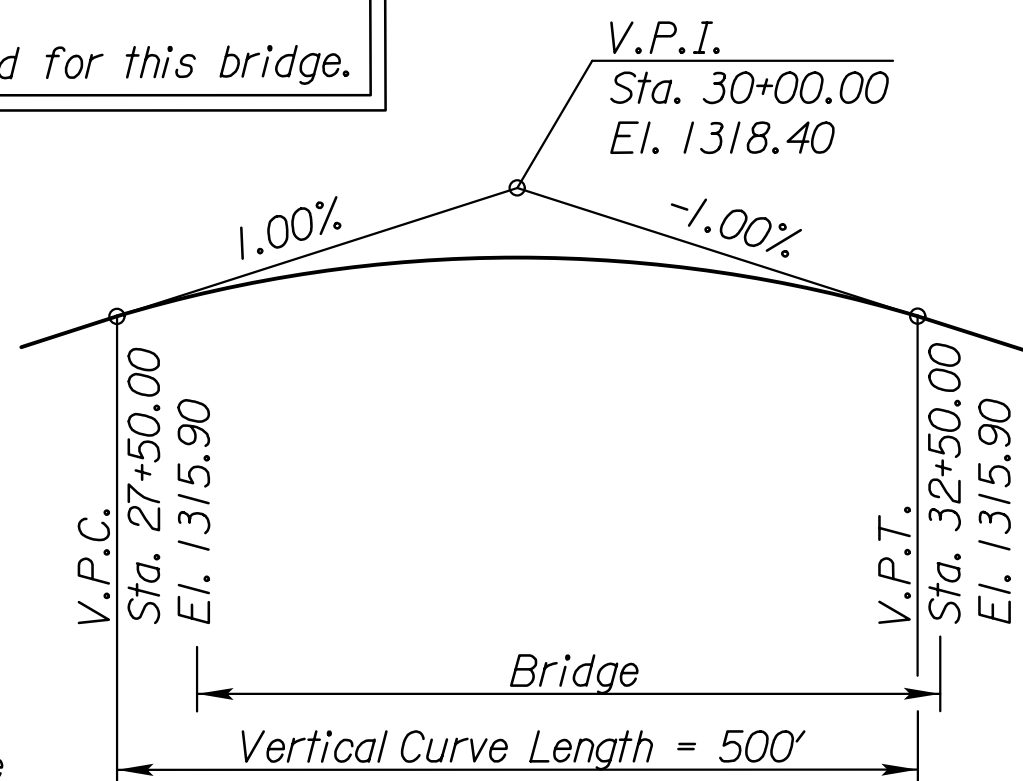


Use only Steel HP12x53 piles in the Abutments and Piers. The lengths shown are for bidding purposes only. Actual lengths shall be determined by the Engineer based on PDA Pile Driving results.

NOTE: The use of PDA is required for this bridge.

Note: Approach slab reinforcing tie bars shall be protected by the Contractor throughout construction. Tie bars inadequately protected and subsequently damaged will be replaced with similar bars drilled and grouted into place and installed at Contractor's expense. See plan sheets for location of approach slab tie bars.

See table on this sheet for adjusted "W" values. "W" is the formed gap. The temperatures in the table are the average ambient temperature over the past 24 hours. (See "Concrete Bridge Approach Pavement" sheet.)



EXPANSION JOINT WIDTH DETAILS (W2)

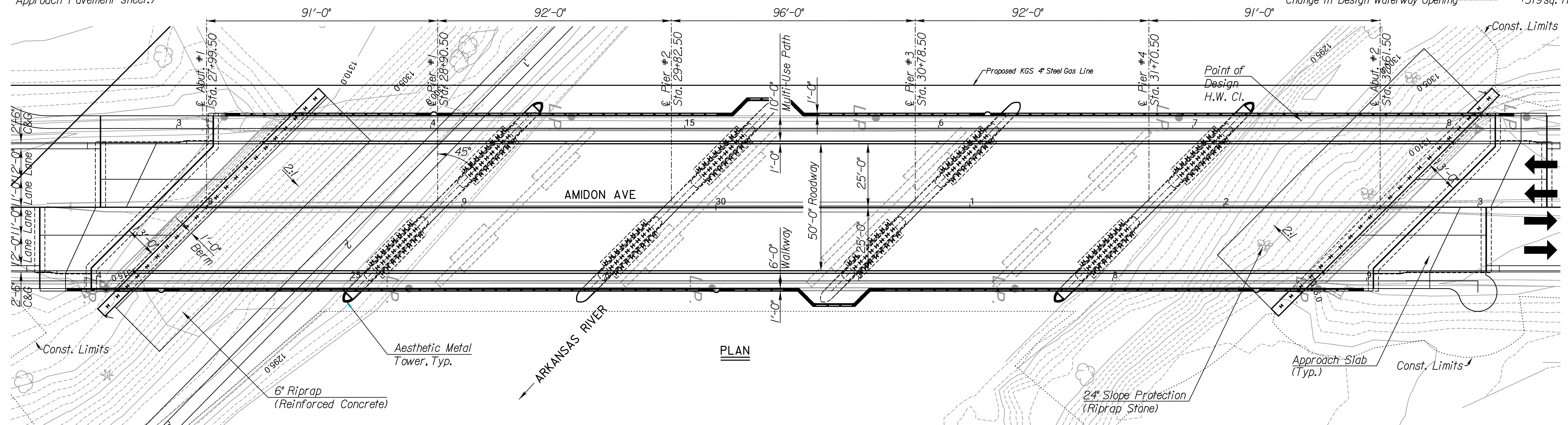
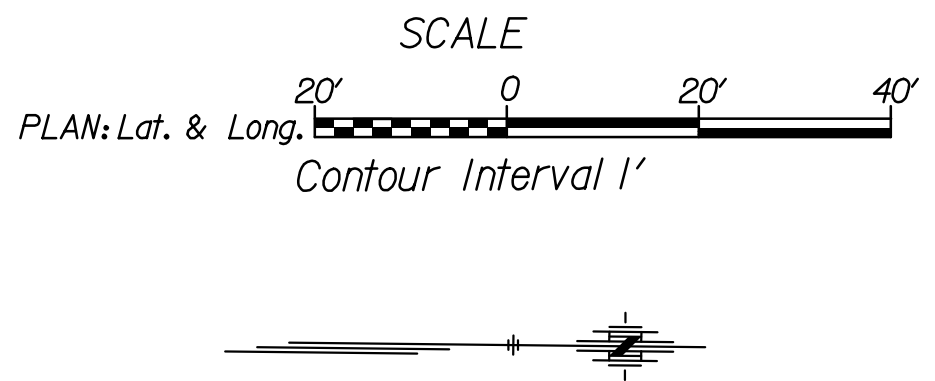
Temperature (F°)	40°	50°	60°	70°	80°	90°
Formed Concrete Opening Size	3 5/8"	3 1/2"	3 1/4"	3 1/8"	2 7/8"	2 3/4"

Y Average Ambient Temperature over previous 24 hours.

DRAINAGE DATA

Drainage Area	39,130 sq. mi.
Design Frequency	100yrs
Design Discharge (Q ₁₀₀)	21,554 cfs
Design High Water Elevation	1,306.39
Change in Design Backwater	-0.07 ft.
Design Backwater Elevation	1,306.81
Overtopping Elevation (Sta. N/A)	N/A
Overtopping Discharge	>500yrs
Overtopping Frequency	>500yrs

Discharge at Q ₁₀₀	21,554 cfs
Change in Backwater at Q ₁₀₀	-0.07 ft.
Backwater Elevation at Q ₁₀₀	1,306.81
Historic High Water Elevation	1,307.58
Ordinary High Water Elevation	1293.00
Total Waterway Provided	5,458 sq. ft.
Design Waterway Provided	3,888 sq. ft.
Estimated Ordinary High Water Discharge	2,619 cfs
Change in Total Waterway Opening	-56 sq. ft.
Change in Design Waterway Opening	+319 sq. ft.



PREPARED BY

 77 NORTH WACO
 SUITE 200
 WICHITA, KANSAS 67203
 PHONE: 316-352-9333

CONSULTANTS:

AMIDON AVE BRIDGE AT ARKANSAS RIVER
 WICHITA, KANSAS

REVISIONS:

MARK	DATE	DESCRIPTION

PROJ NO: E1010-4025062
 SCALE: 1"=20'
 DATE: 07/08/2022
 DESIGNED BY: JBM
 DRAWN BY: JBM
 CHECKED BY: WBS

SHEET TITLE:
CONSTRUCTION LAYOUT

SHEET NO.
32
 SHEET 32 OF 128