

CONSULTANTS:

AMIDON AVE. BRIDGE
 AT ARKANSAS RIVER

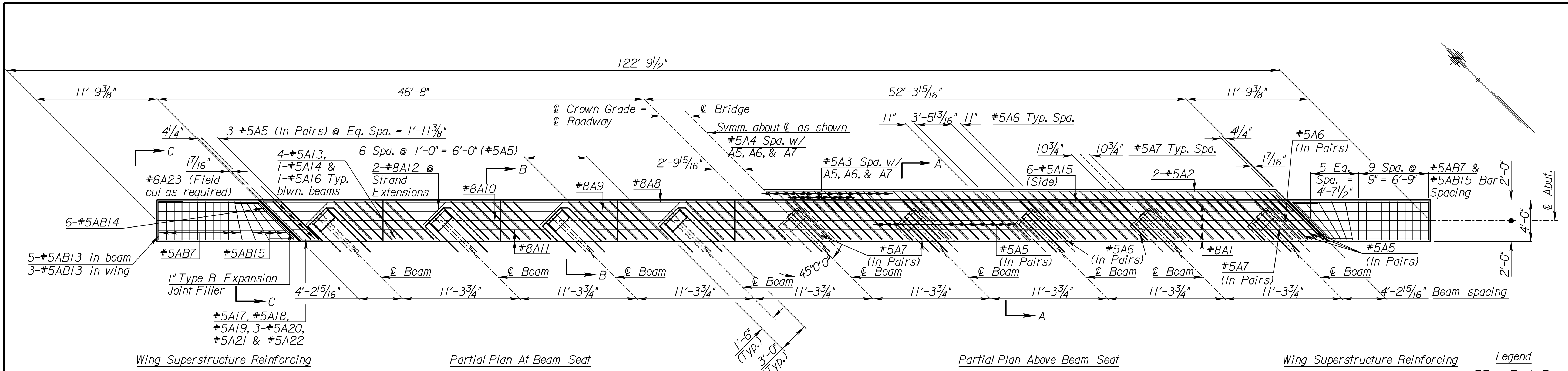


REVISIONS:	MARK	DATE	DESCRIPTION

PROJ NO: E1010-4025062
 SCALE:
 DATE: 07/08/2022
 DESIGNED BY: JBM
 DRAWN BY: JBM
 CHECKED BY: WBS

SHEET TITLE:
**ABUTMENT
 SUPERSTRUCTURE
 DETAILS**

SHEET NO.
36
 SHEET 36 OF 128



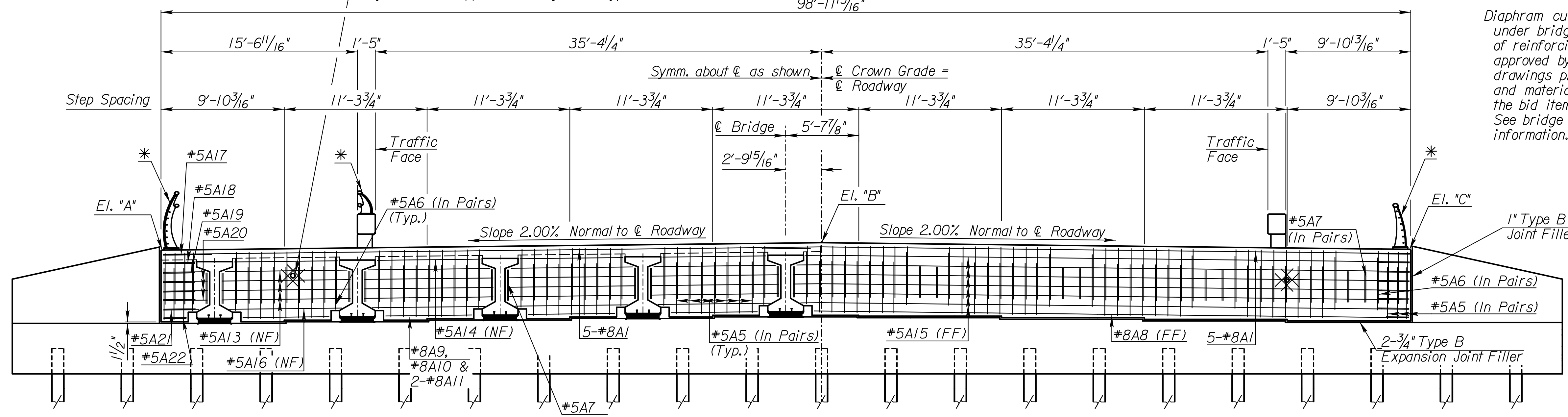
PLAN

(Abut. No. 2 Shown. Abut. No. 1 Similar)

See bridge and lighting sheets for "Fiber Optics Conduit Detail" for more information. Location and number of conduits thru diaphragms may be adjusted with approval of Engineer (Typ.)

Legend
 EF = Each Face
 NF = Near Face
 FF = Far Face

* See "Handrail Detail" sheets.



ELEVATION

(Abut. No. 2 Shown. Abut. No. 1 Similar)

Min. lap for a #5 bar is 2'-4" (This sheet only.)
 Min. lap for a #8 bar is 3'-10" (This sheet only.)

See "Abutment Sections" sheet for Section A-A, B-B & C-C

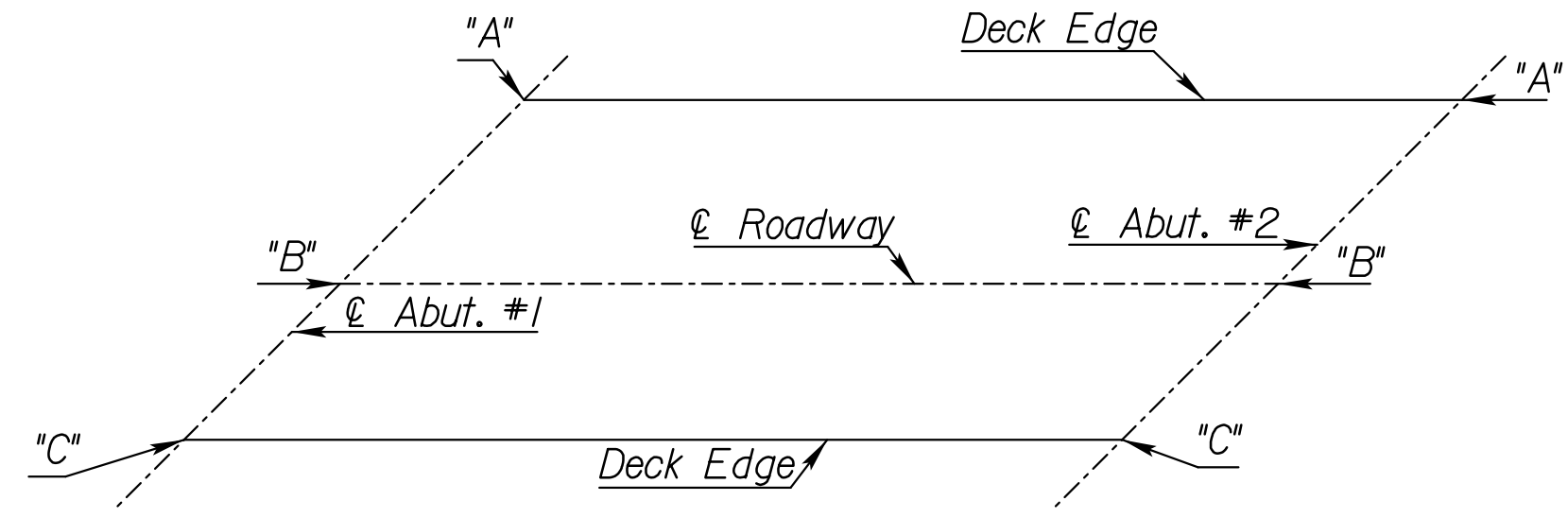


TABLE OF ABUTMENT ELEVATIONS			
Abutment	"A"	"B"	"C"
Abutment No. 1	1315.88	1316.35	1315.40
Abutment No. 2	1314.68	1315.79	1315.45

Note:
 Elevations given at ℓ Abutment