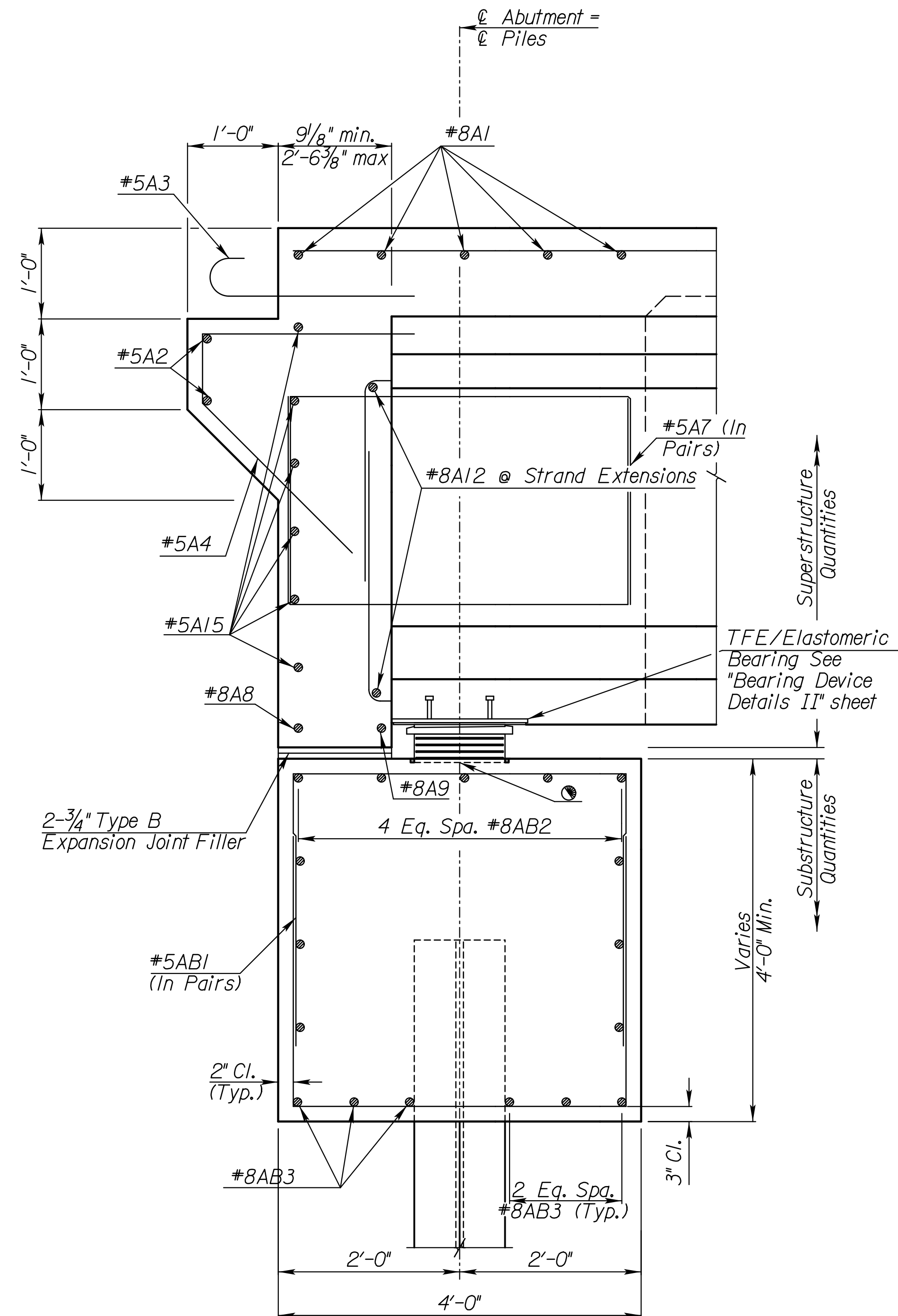
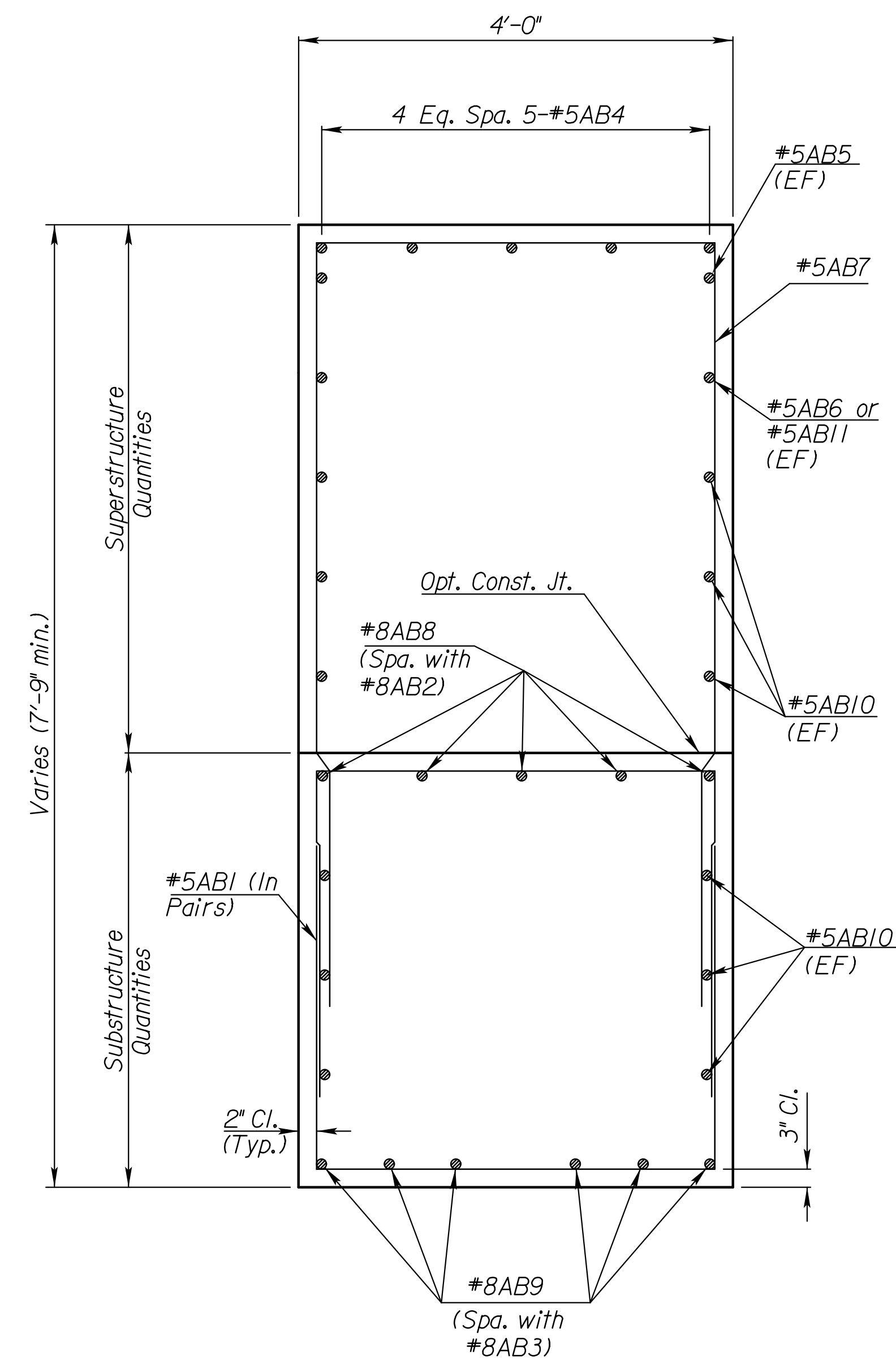


SECTION A-A



SECTION B-B



SECTION C-C

Legend
 EF = Each Face
 NF = Near Face
 FF = Far Face

1/2" bearing recess. See bearing details.

See "Abutment Substructure Details" and "Abutment Superstructure Details" sheets for section locations.

Min. lap for a #5 bar is 2'-4" (This sheet only.)
 Min. lap for a #8 bar is 3'-10" (This sheet only.)

CONSULTANTS:

AMIDON AVE. BRIDGE
 AT ARKANSAS RIVER

WICHITA, KANSAS

 CITY OF WICHITA

REVISIONS:	MARK	DATE	DESCRIPTION

PROJ NO: E1010-4025062
 SCALE:
 DATE: 07/08/2022
 DESIGNED BY: JBM
 DRAWN BY: JBM
 CHECKED BY: WBS

SHEET TITLE:
ABUTMENT SECTIONS

SHEET NO.
37
 SHEET 37 OF 128