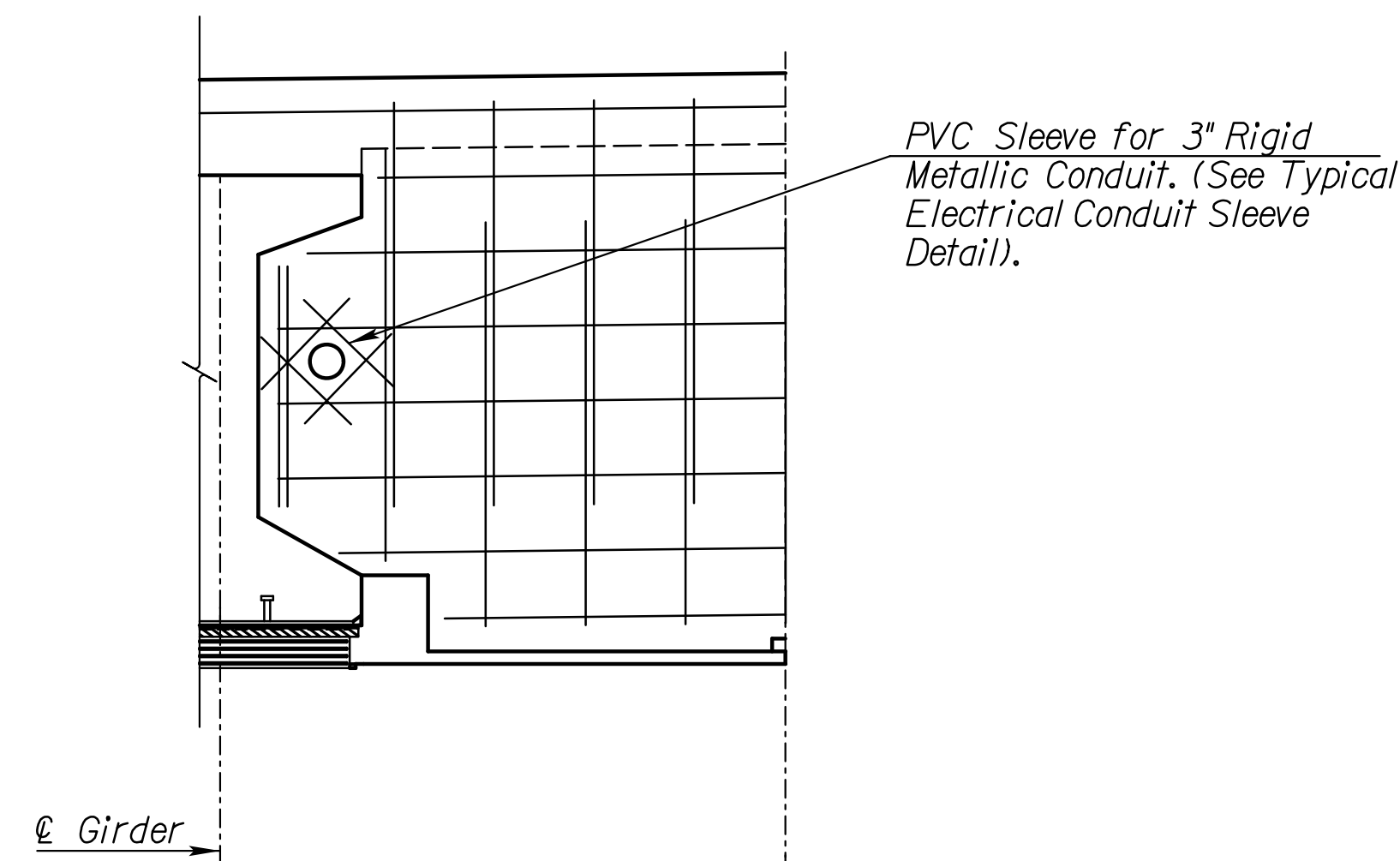


APPROACH SLAB TIE BAR OPTION AND CONDUIT THRU DIAPHRAGM DETAIL

The Contractor has the option (at no additional cost to the City) of substituting a mechanically spliced reinforcing bar for any or all of the cast-in-place approach slab tie bars.

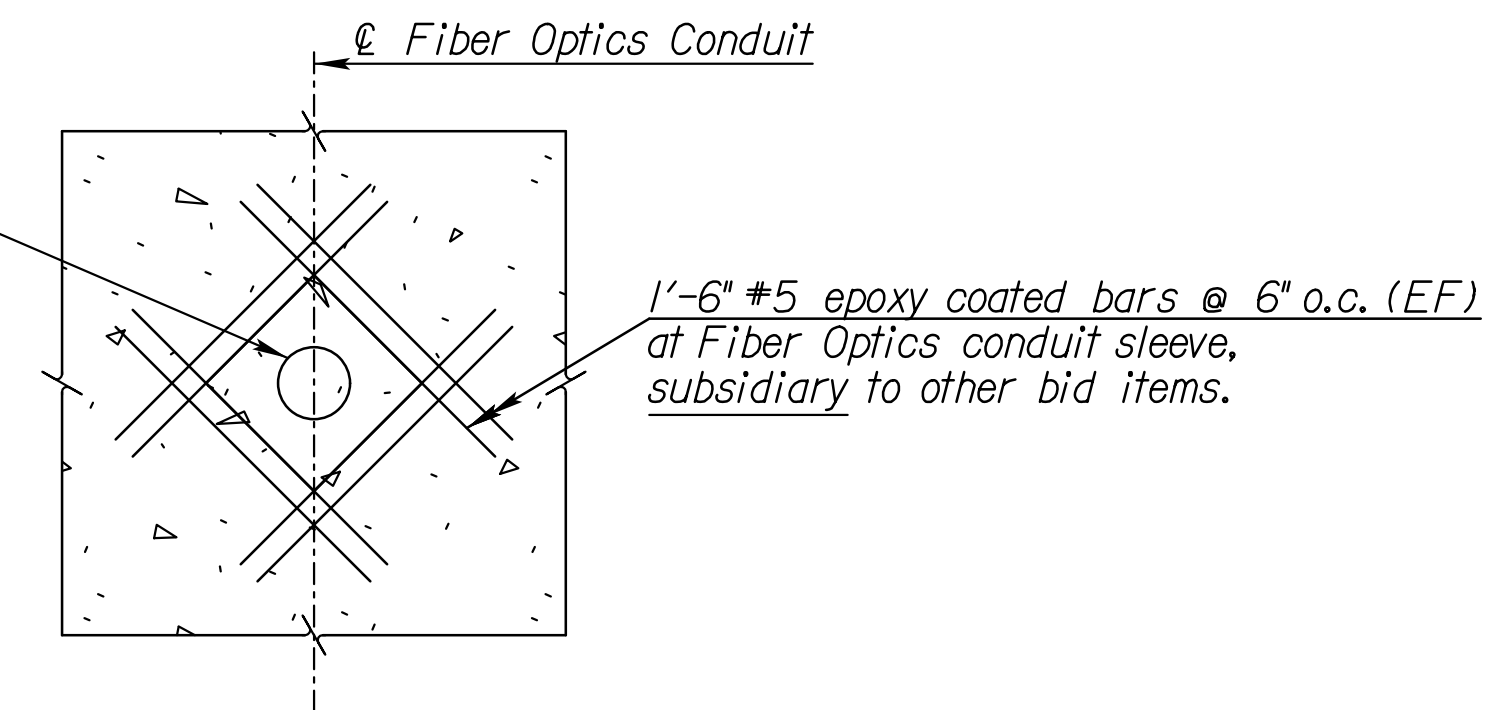
Conduits thru diaphragm are only required at Abutment #1 (all conduits run from the south).

* Diaphragm cutout for Lighting Standard DMX Lighting Feature or Fiber Optic conduit. Method of reinforcing around the cutout shall be approved by the Engineer with shop drawings prior to installation. All labor and material needed shall be included in the bid item "Electrical Lighting System". See bridge and lighting sheets for more information about the DMX Lighting Feature and Lighting Standard conduits and see bridge and lighting sheets for information about the Fiber Optics Conduit.



CONDUIT DETAIL THRU DIAPHRAGM

Place PVC sleeve for Fiber Optics conduit thru abutment diaphragm prior to placing concrete, size to be approved by Engineer.



TYPICAL ELECTRICAL CONDUIT SLEEVE DETAIL

Provide PVC sleeve in the Abutment Diaphragm for Fiber Optics conduit. See bridge and lighting sheets for plan location of conduit. Grout space between PVC sleeve and conduit with an approved KDOT silicone after installation of conduit and before backfilling behind the Abutment. Adjust placement of reinforcing to accommodate sleeve location (do not field cut reinforcing). All labor and material for this work is subsidiary to the "Electrical Lighting System" bid item. Detail shown for the Fiber Optics Conduit, but applies to all other conduits thru the Abutment Diaphragm.

PREPARED BY

 J&S Engineering, Inc.
 77 NORTH WACO
 SUITE 200
 WICHITA, KANSAS 67203
 PHONE: 316-352-9333

CONSULTANTS:

AMIDON AVE. BRIDGE
 AT ARKANSAS RIVER

WICHITA, KANSAS

 CITY OF
 WICHITA

REVISIONS:	MARK	DATE	DESCRIPTION

PROJ NO: E1010-4025062
 SCALE:
 DATE: 07/08/2022
 DESIGNED BY: JBM
 DRAWN BY: JBM
 CHECKED BY: WBS

SHEET TITLE:
ABUTMENT DIAPHRAGM CONDUITS

SHEET NO.
38
 SHEET 38 OF 128