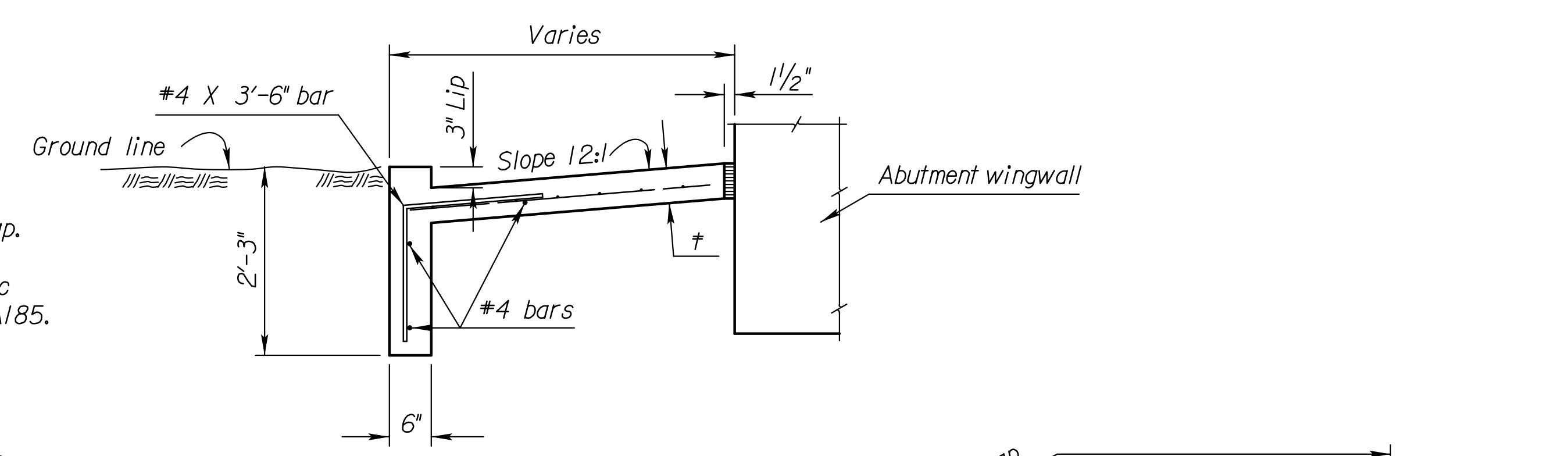
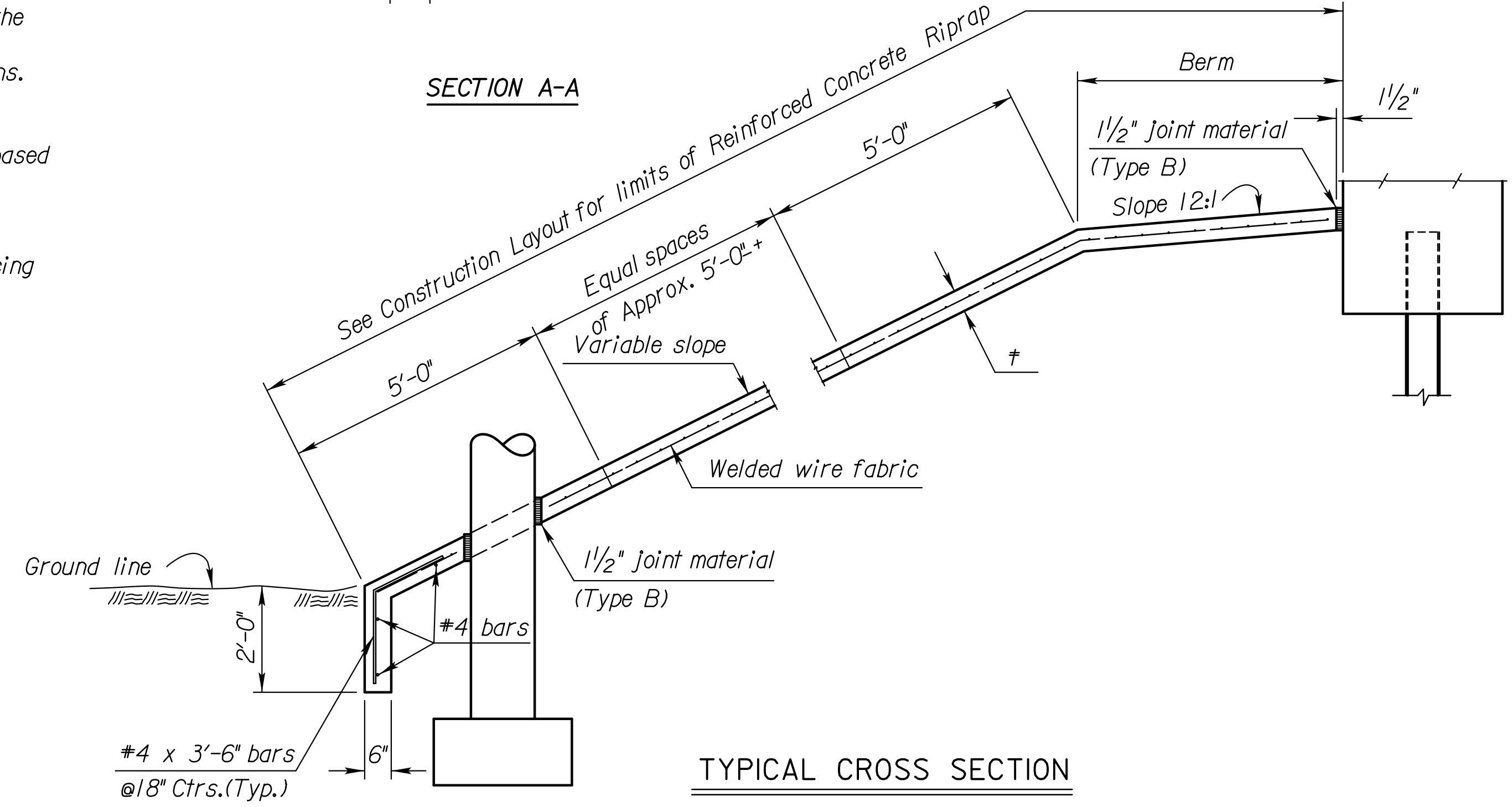


PLAN
(Showing Joint Layout)

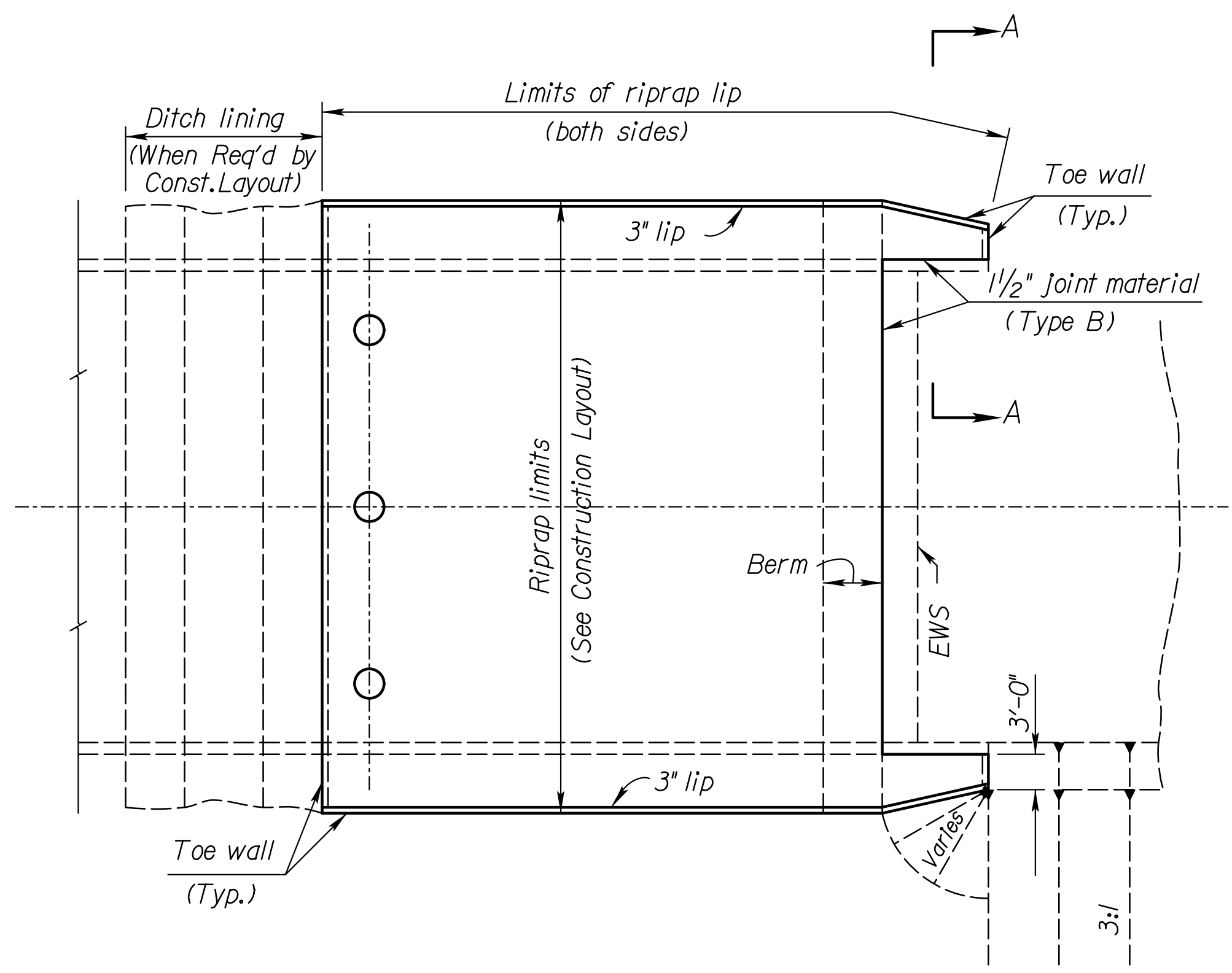
Notes:
 Use Concrete (Grade 3.0)(AE) for the riprap.
 Use 6x6 - W1.4 x W1.4 welded wire fabric conforming to the requirements of ASTM A185.
 Use reinforcing steel conforming to the requirements of ASTM A615, Grade 60.
 Place 1/2" Type B expansion material in the joints caused by any intersection of the riprap with the abutment, wings, or columns.
 Measurement of the Reinforced Concrete Riprap shall be in square yards and is based on the outside surface area.
 The toe walls, 3" lip, Type B expansion material, welded wire fabric, and reinforcing steel are subsidiary to the bid item Reinforced Concrete Riprap.



SECTION A-A



TYPICAL CROSS SECTION



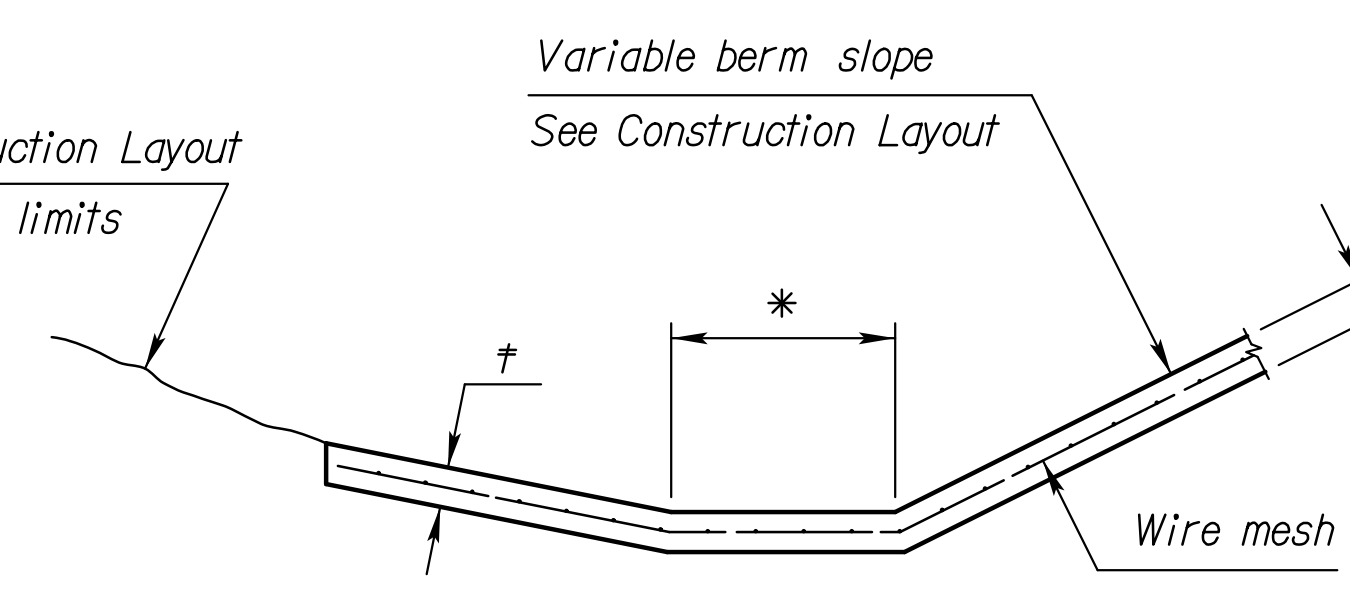
TYPICAL PLAN

Place Reinforced Concrete Riprap at Abutment No. 1 only.

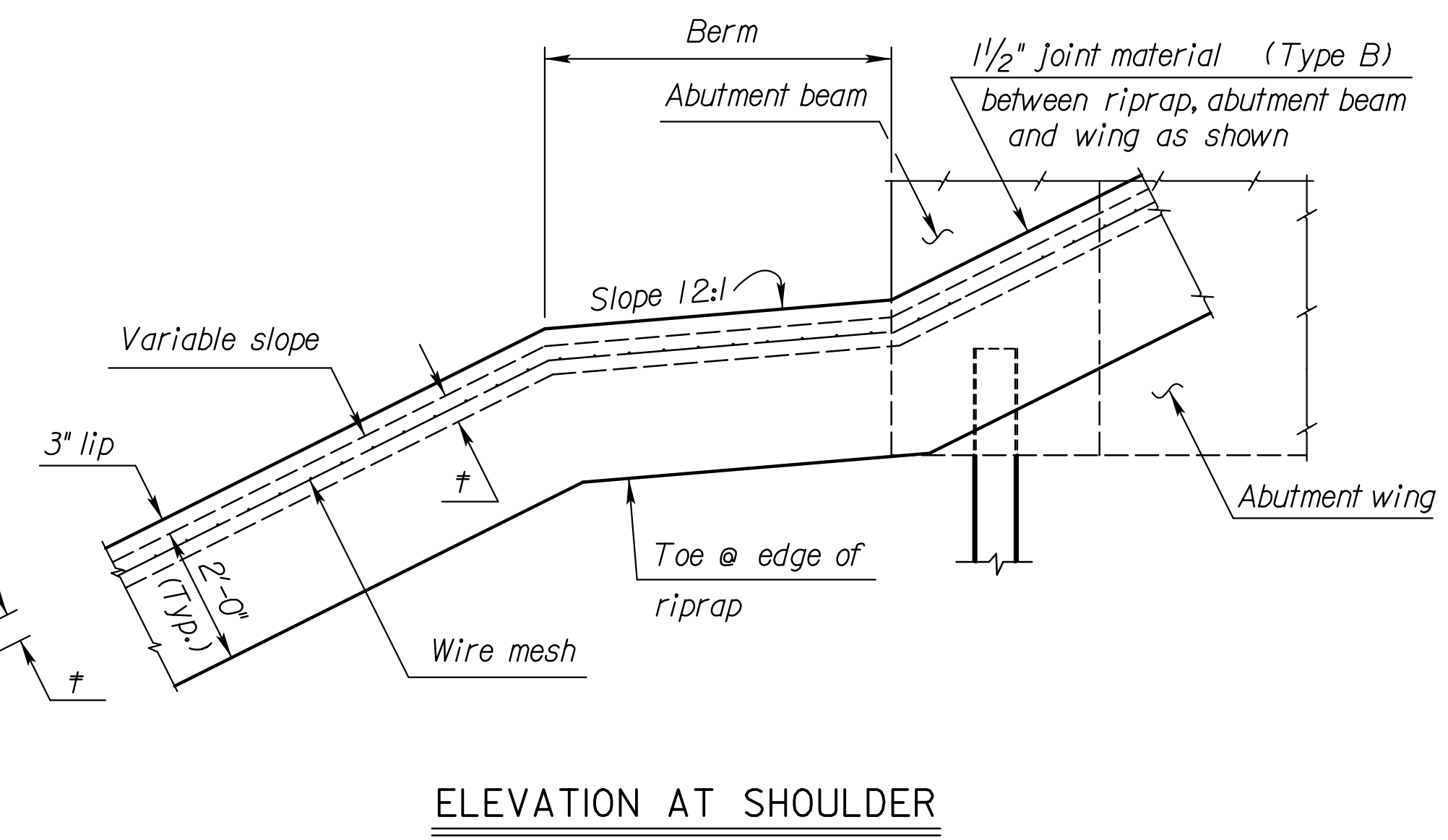
See Construction Layout for slope & limits

* See Construction Layout for this dimension (1'-0" Min.).

† See Construction Layout for thickness.



DITCH BOTTOM
(When Req'd by Construction Layout sheet)



ELEVATION AT SHOULDER

PREPARED BY:  **CITY OF WICHITA**
 727 NORTH WACO
 SUITE 200
 WICHITA, KANSAS 67203
 PHONE: 316-352-9333

CONSULTANTS:
AMIDON AVE. BRIDGE AT ARKANSAS RIVER
 WICHITA, KANSAS


REVISIONS:	MARK	DATE	DESCRIPTION

PROJ NO: E1010-4025062
 SCALE:
 DATE: 07/08/2022
 DESIGNED BY: JBM
 DRAWN BY: JBM
 CHECKED BY: WBS

SHEET TITLE:
REINFORCED CONCRETE RIPRAP

SHEET NO.
40

SHEET **40** OF 128