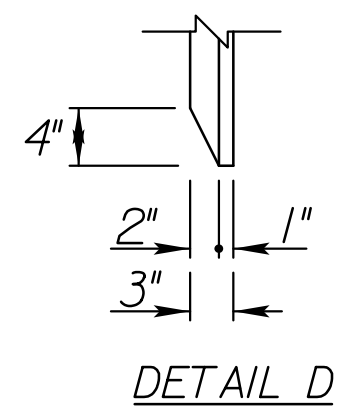
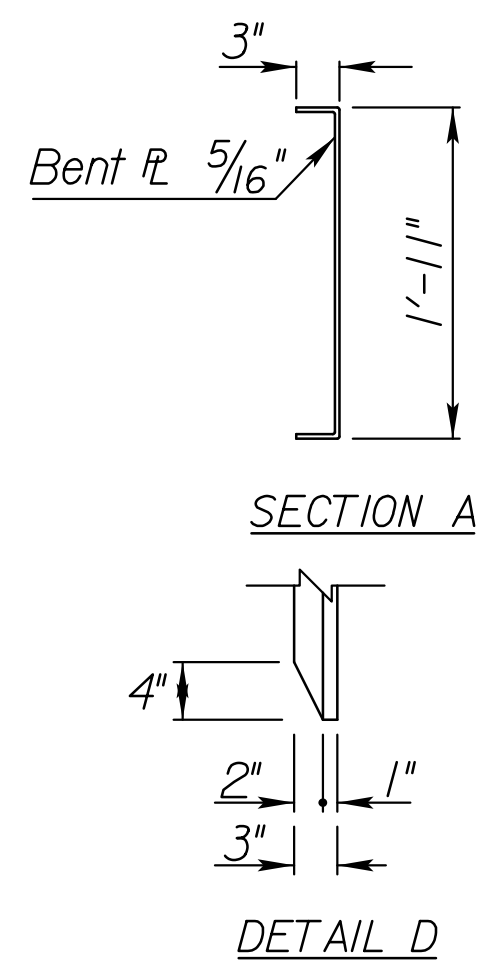
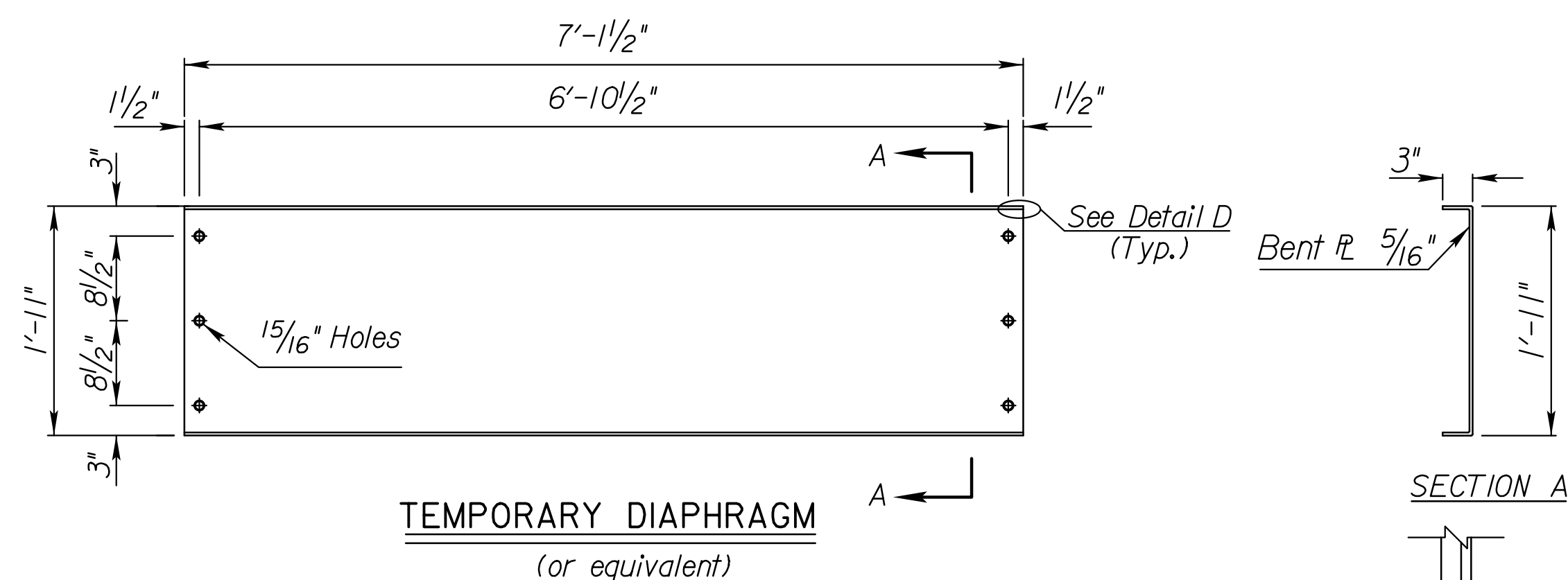
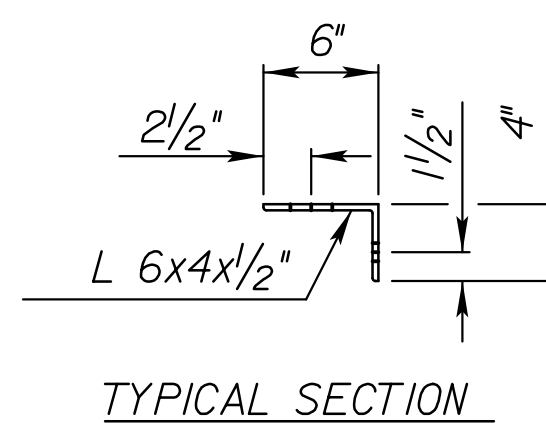
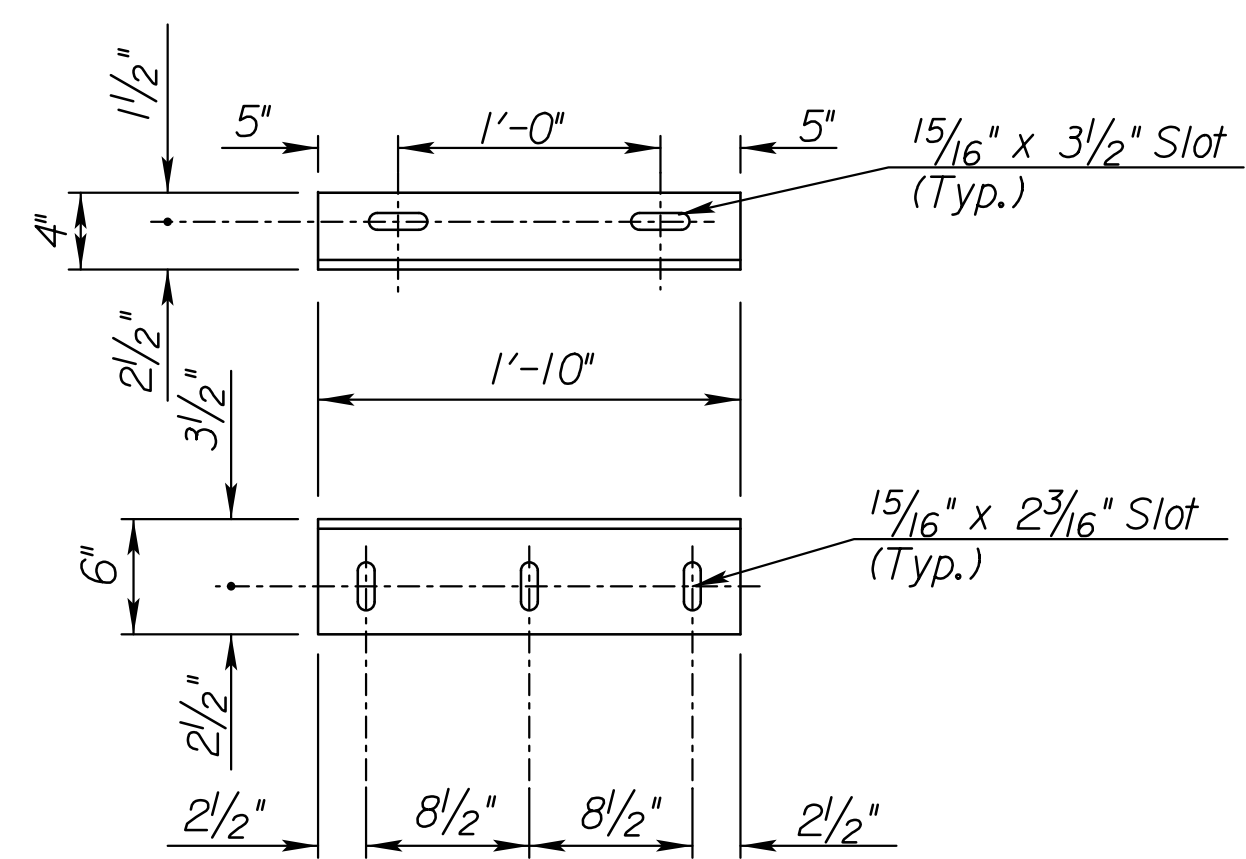
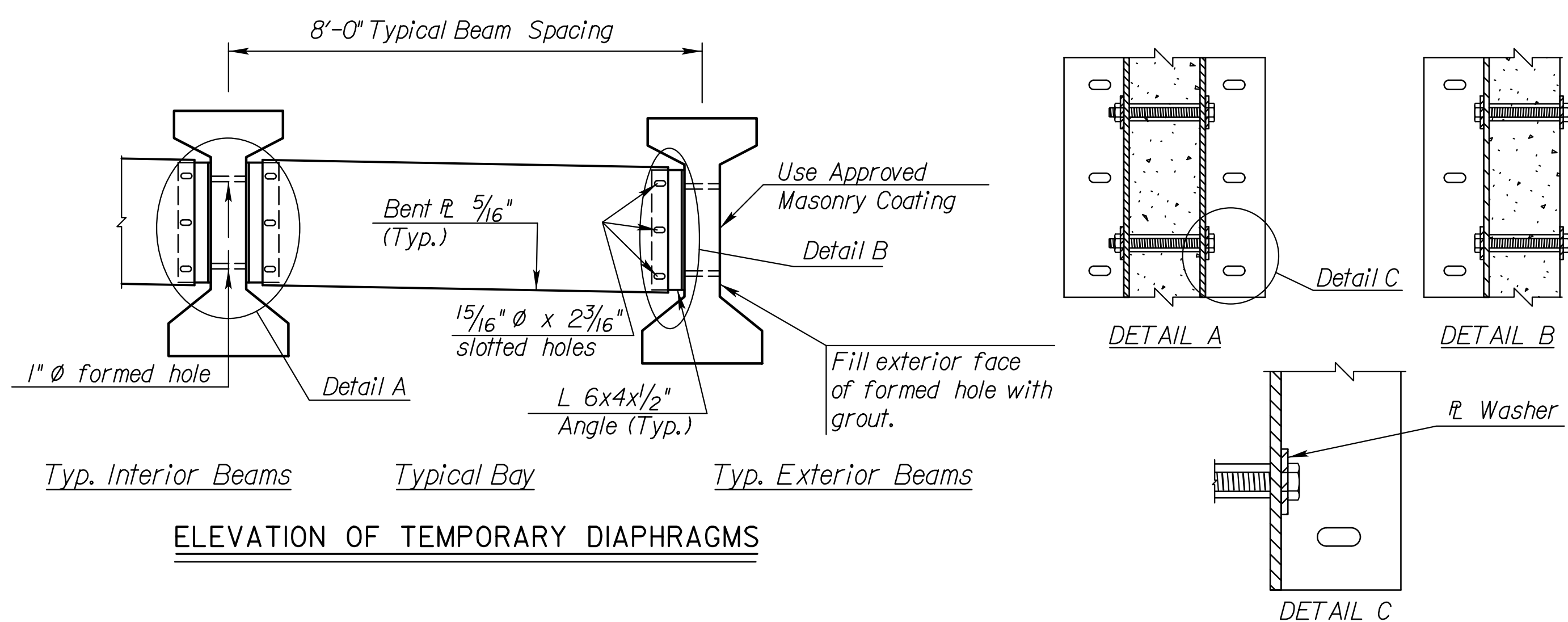


\*\* Temporary Diaphragms required in every girder bay at 1st & 3rd Quarter Points in each span.

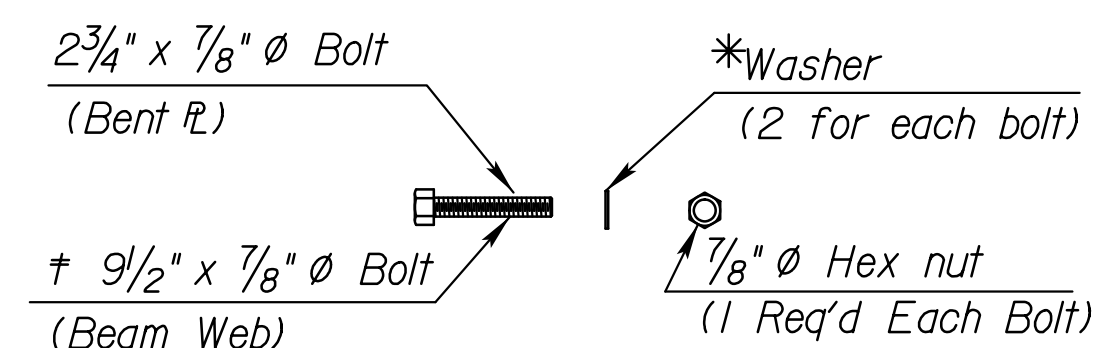
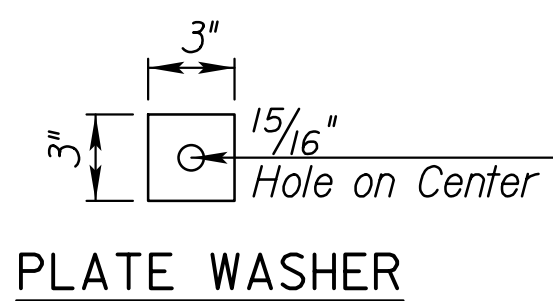


**TEMPORARY DIAPHRAGMS:** Use ASTM A709 Gr. 36 steel for all angles and bent plates for temporary diaphragms. All bolts, nuts, and washers for fasteners shall conform to the heavy hex structural requirements of ASTM F3125 Gr. A325, Type 1. Galvanize the angles, bolts, nuts, and washers in accordance with the KDOT Specifications. Use hardened steel washers over any oversized holes. Use 5/16" plate washers over any slotted holes along with hardened washers under the turned elements. Use the turn-of-the-nut tightening method. DT's are not required. Install the temporary diaphragms, as shown in the details, prior to placing any superstructure concrete. Leave the temporary diaphragms in place until the concrete diaphragms and deck have cured. Remove the angles from the beams and fill the holes in the prestressed beams with an approved epoxy grout. The bent plate diaphragms, angles, nuts, bolts, and washers shall remain the property of the Contractor. Submit shop drawings of the temporary diaphragms to the KDOT Bridge Section for review and approval. The material, equipment, and labor necessary for the installation of the temporary diaphragms, including filling the bolt holes, shall not be paid for directly, but shall be subsidiary to the bid item "Prestressed Concrete Beams."



Note: Open holes are preferred and shown here; coil inserts may be used. Coordinate with Prestress fabricator.

**CONNECTION ANGLE DETAILS**  
(or equivalent)



\*Plate washers required for slotted holes.  
† Verify per beam type.

CONSULTANTS:

REVISIONS:	MARK	DATE	DESCRIPTION

PROJ NO: E1010-4025062  
 SCALE:  
 DATE: 07/08/2022  
 DESIGNED BY: JBM  
 DRAWN BY: JBM  
 CHECKED BY: WBS

SHEET TITLE:  
**TEMPORARY DIAPHRAGM DETAILS**

SHEET NO.  
**52**  
 SHEET 52 OF 128