

CONSULTANTS:

AMIDON AVE. BRIDGE
 AT ARKANSAS RIVER

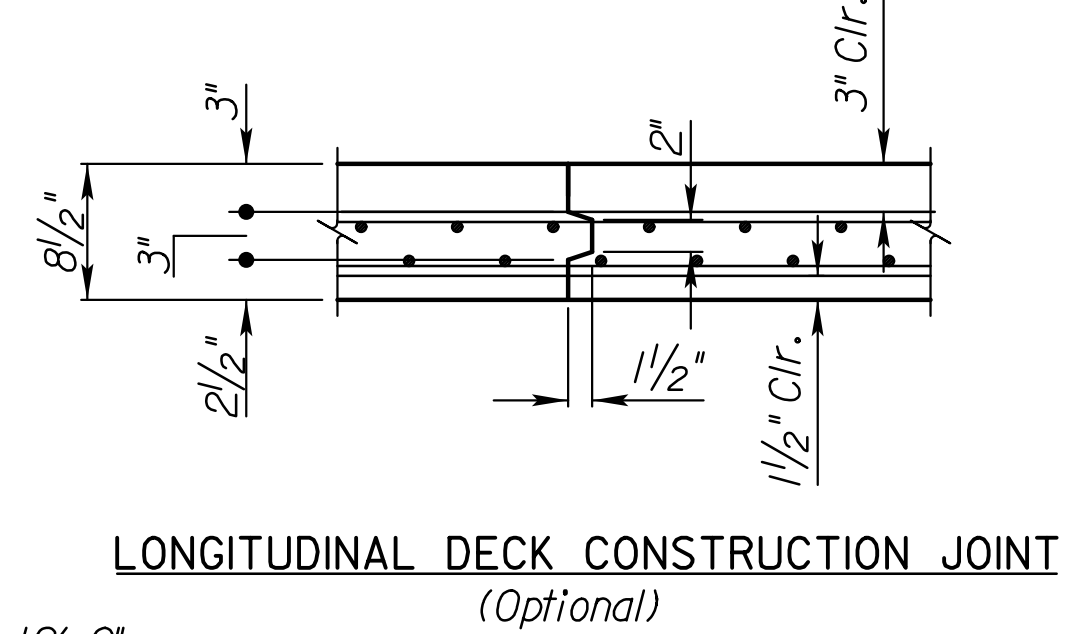
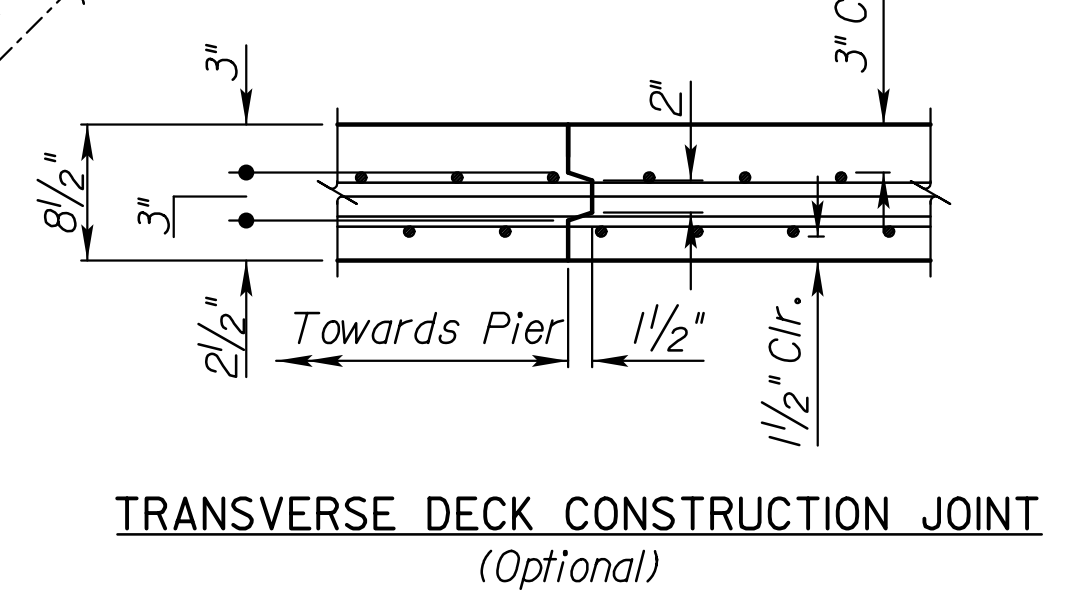
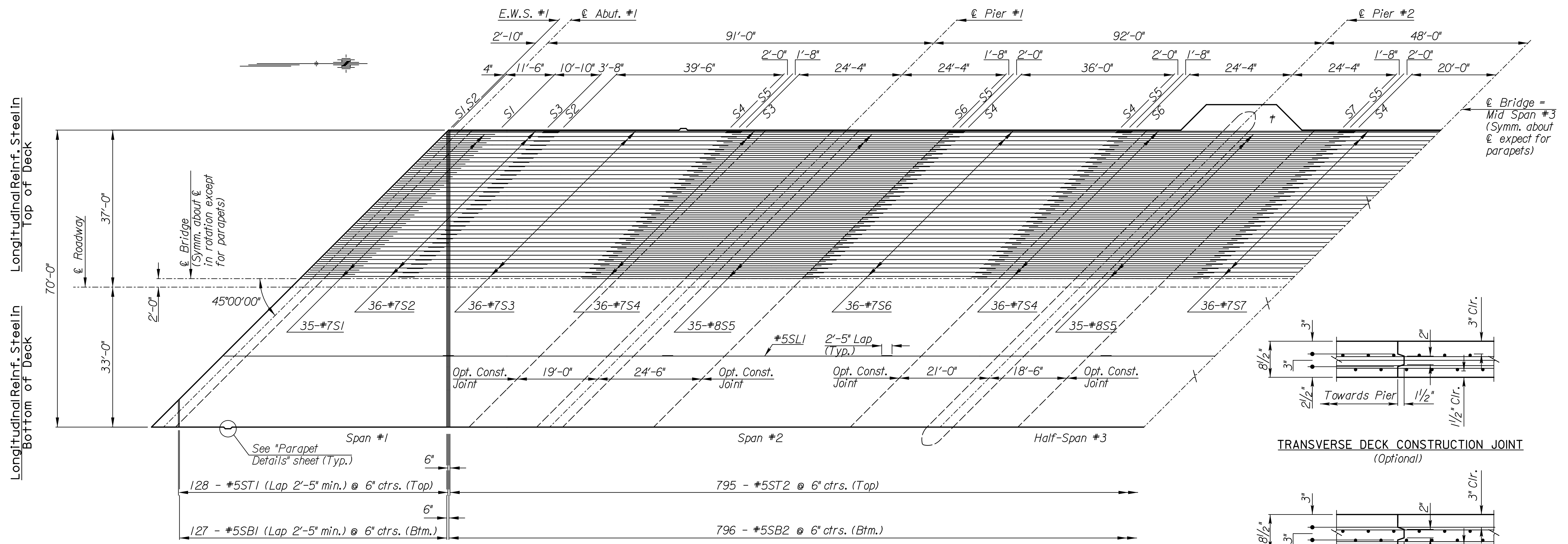


| REVISIONS: | MARK | DATE | DESCRIPTION |
|------------|------|------|-------------|
| | | | |
| | | | |
| | | | |

PROJ NO: E1010-4025062
 SCALE:
 DATE: 07/08/2022
 DESIGNED BY: JBM
 DRAWN BY: JBM
 CHECKED BY: WBS

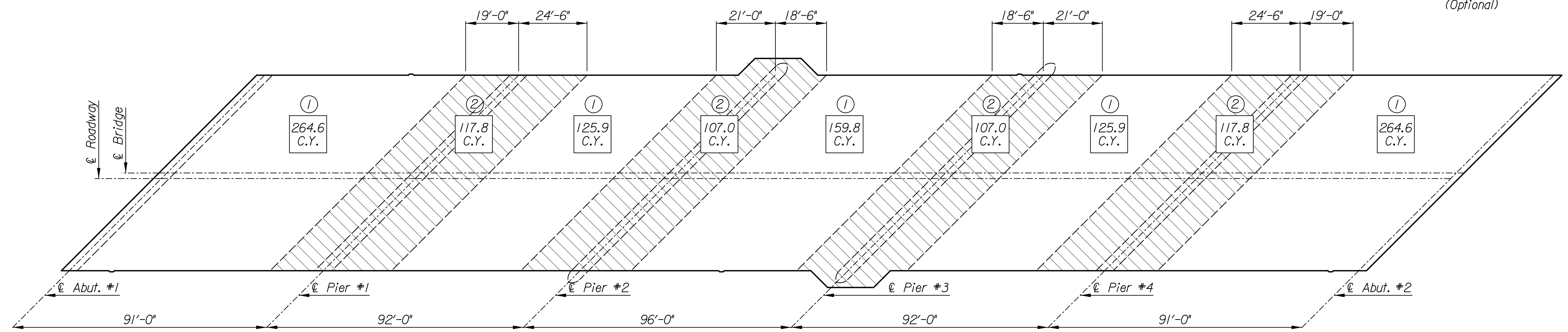
SHEET TITLE:
**DECK
 DETAILS I**

SHEET NO.
54
 SHEET 54 OF 128



HALF PLAN VIEW SHOWING REINFORCEMENT IN DECK
 * See other sheets for balcony and parapet reinforcing

Note: Optional Longitudinal and Transverse Construction Joints are subsidiary to the "Concrete (Grade 4.0)(A/E)(SAX)(MPC)" bid item. If used, Longitudinal Construction Joint shall be placed at the Crown Grade = ℓ Roadway.



CONCRETE PLACING SEQUENCE
 (Optional)
 (Concrete quantities include deck, balconies, parapets adjacent to deck, fillets and abutment and pier diaphragms)

Segmental, combined or continuous pours are allowed by an approved alternate placing sequence.
 A discontinuous pour must stop at a construction joint short of a pier.
 The Contractor must place the corral rail continuously from one end of the bridge to the other.

IF THIS DRAWING IS LESS THAN 22" X 36" IT IS A REDUCED SIZE DRAWING