

CONSULTANTS:

AMIDON AVE. BRIDGE
 AT ARKANSAS RIVER

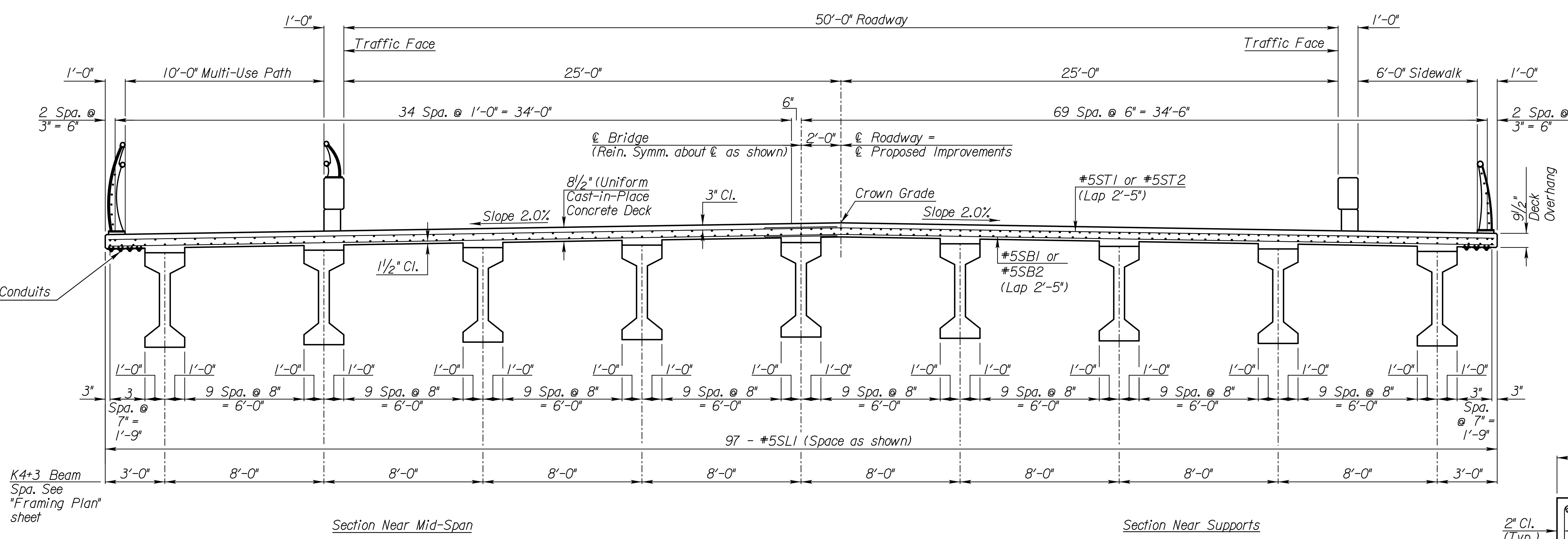
WICHITA, KANSAS


REVISIONS:	MARK	DATE	DESCRIPTION

PROJ NO: E1010-4025062
 SCALE:
 DATE: 07/08/2022
 DESIGNED BY: JBM
 DRAWN BY: JBM
 CHECKED BY: WBS

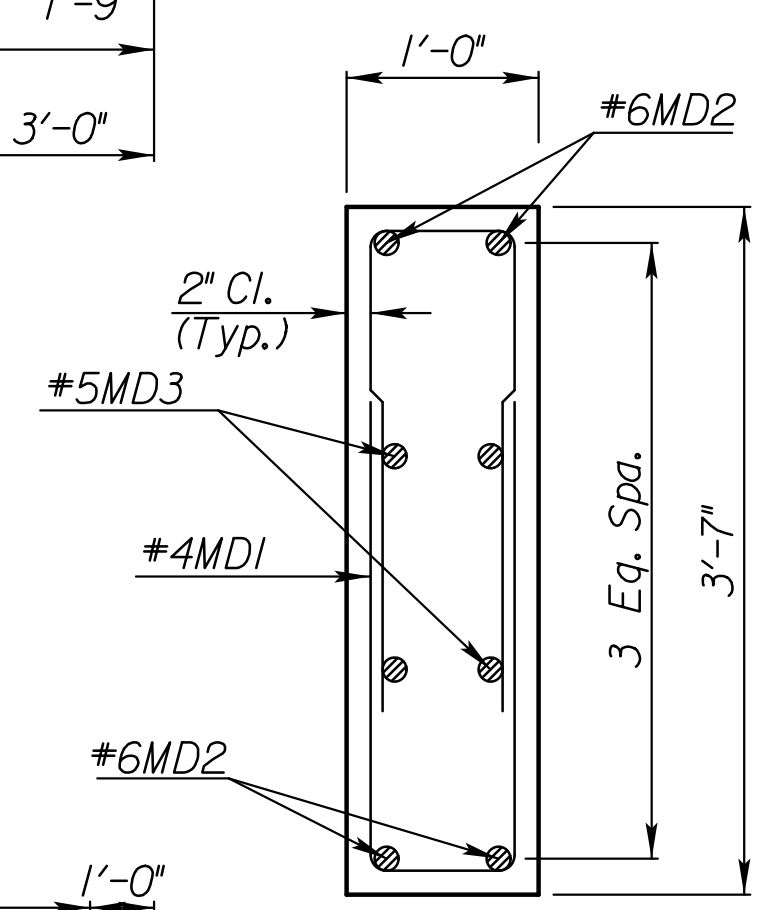
SHEET TITLE:
**DECK DETAILS II &
 INTERMEDIATE
 DIAPHRAGM**

SHEET NO.
55
 SHEET 55 OF 128

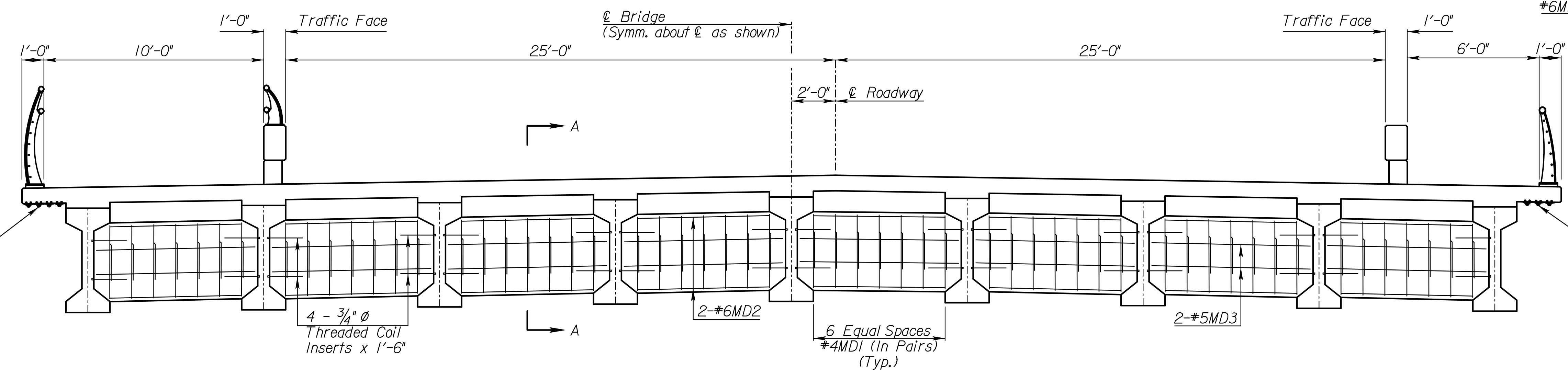


SECTION VIEW SHOWING REINFORCING IN DECK
 (Normal to ℓ Roadway)
 (Looking Upstation)

NOTE: Threaded Coil Rods ($\frac{3}{4}$ " x 1'-6") and Threaded Coil Inserts shall be subsidiary to the bid item "Prestressed Concrete Beam (K4+3)".



SECTION A-A



ELEVATION OF INTERMEDIATE DIAPHRAGM

(See "Framing Plan" sheet for location of Intermediate Diaphragms.)
 (Normal to ℓ Roadway. Note: Individual diaphragms do not lie in the same plane.)

INTERMEDIATE DIAPHRAGMS:
 Cure intermediate diaphragms a minimum of seven days before placing deck.