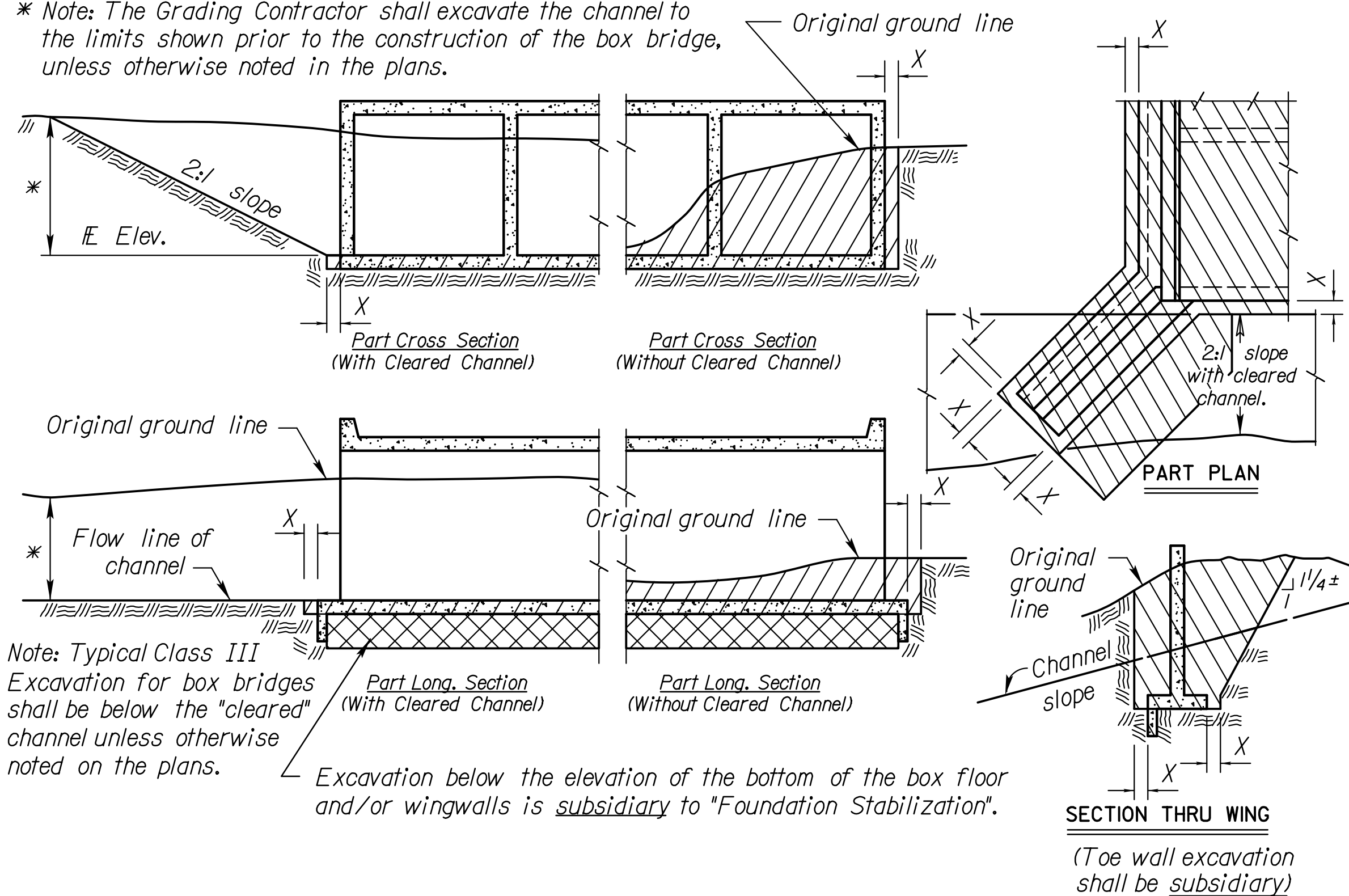
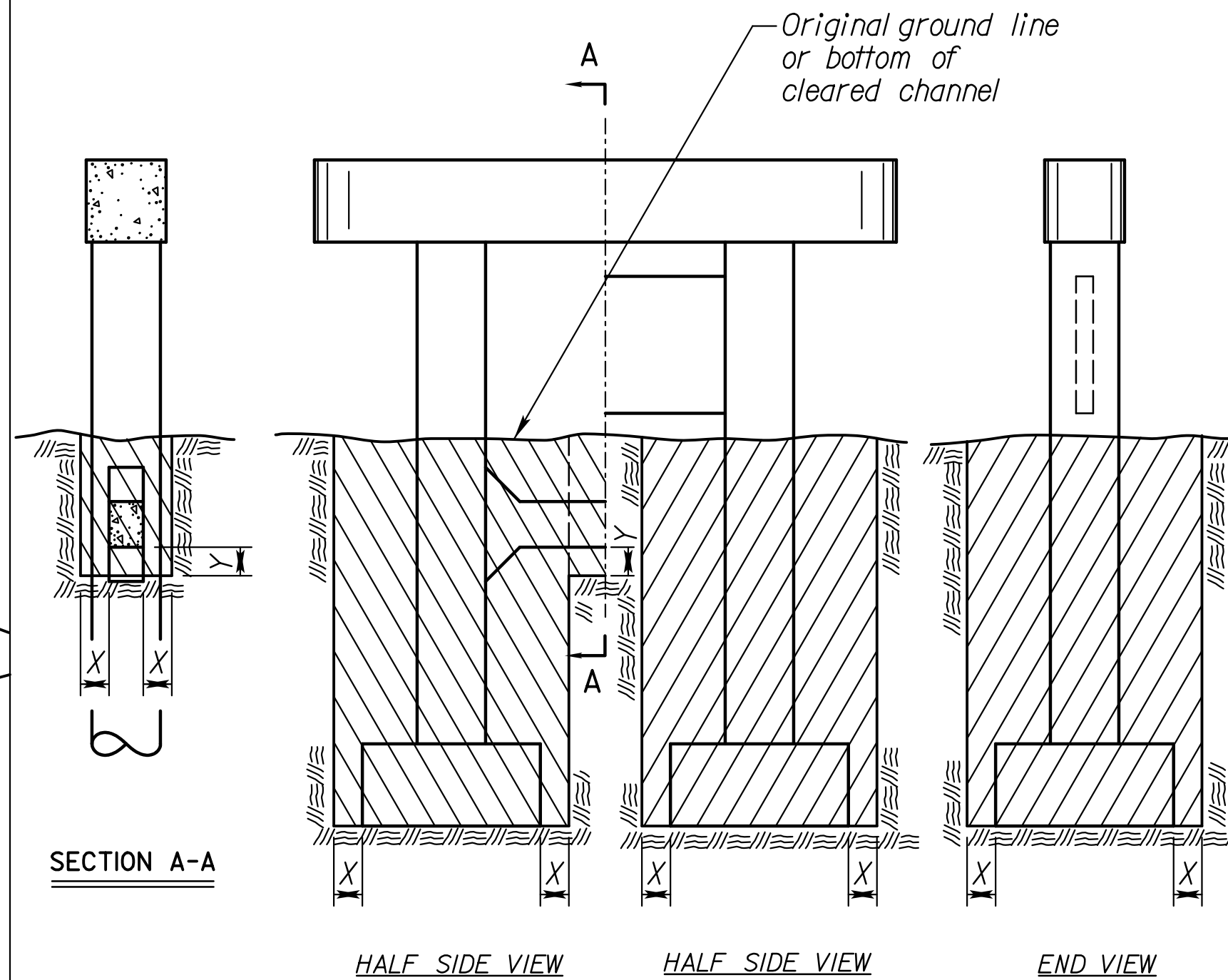


\* Note: The Grading Contractor shall excavate the channel to the limits shown prior to the construction of the box bridge, unless otherwise noted in the plans.



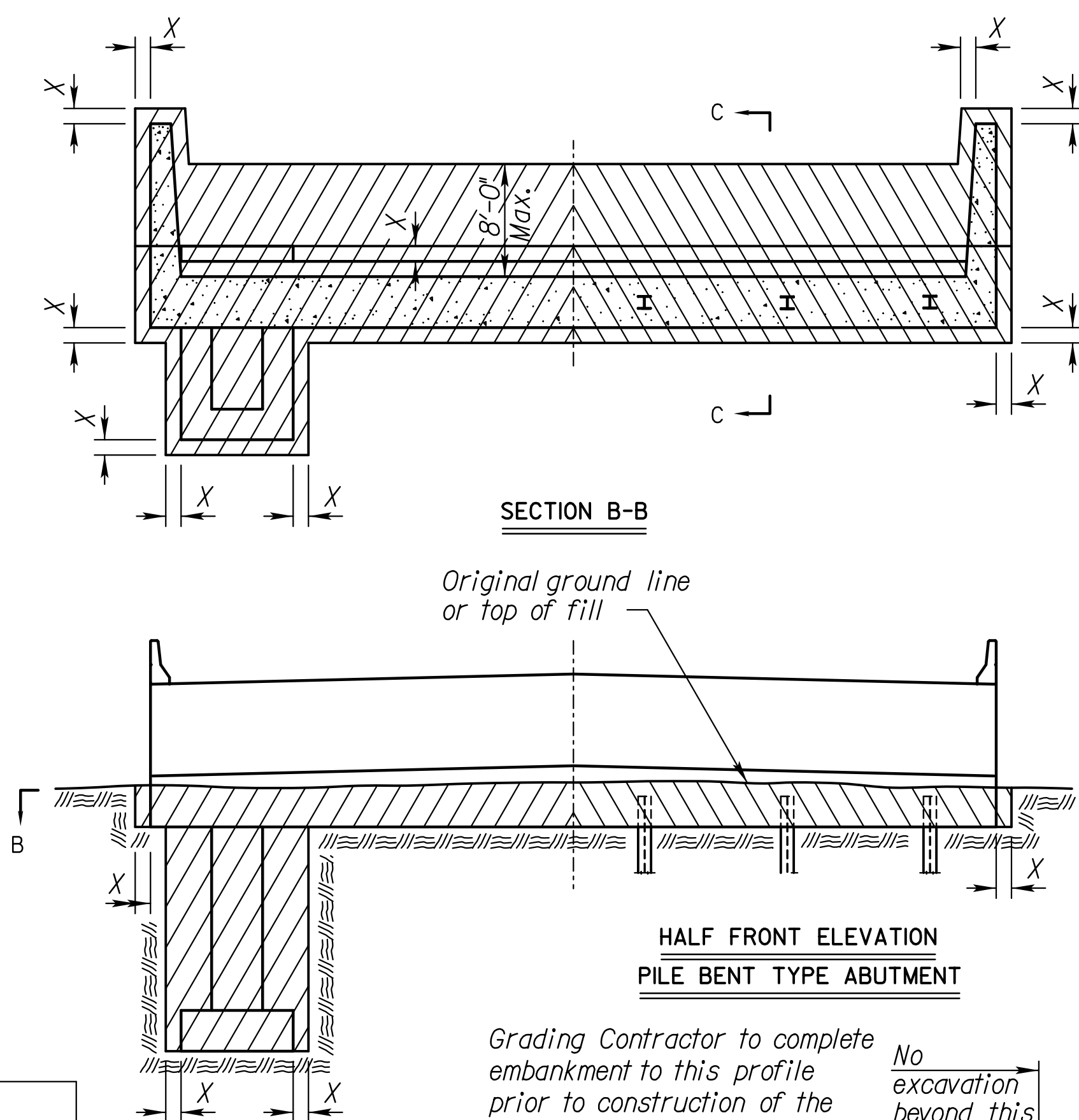
**EXCAVATION DETAILS FOR REINFORCED CONCRETE BOX CULVERT**

Note: Excavation for culverts less than bridge length and the additional excavation for "Embedded Structures" shall not be paid for as Class III Excavation, but shall be subsidiary to Grade 4.0 Concrete.



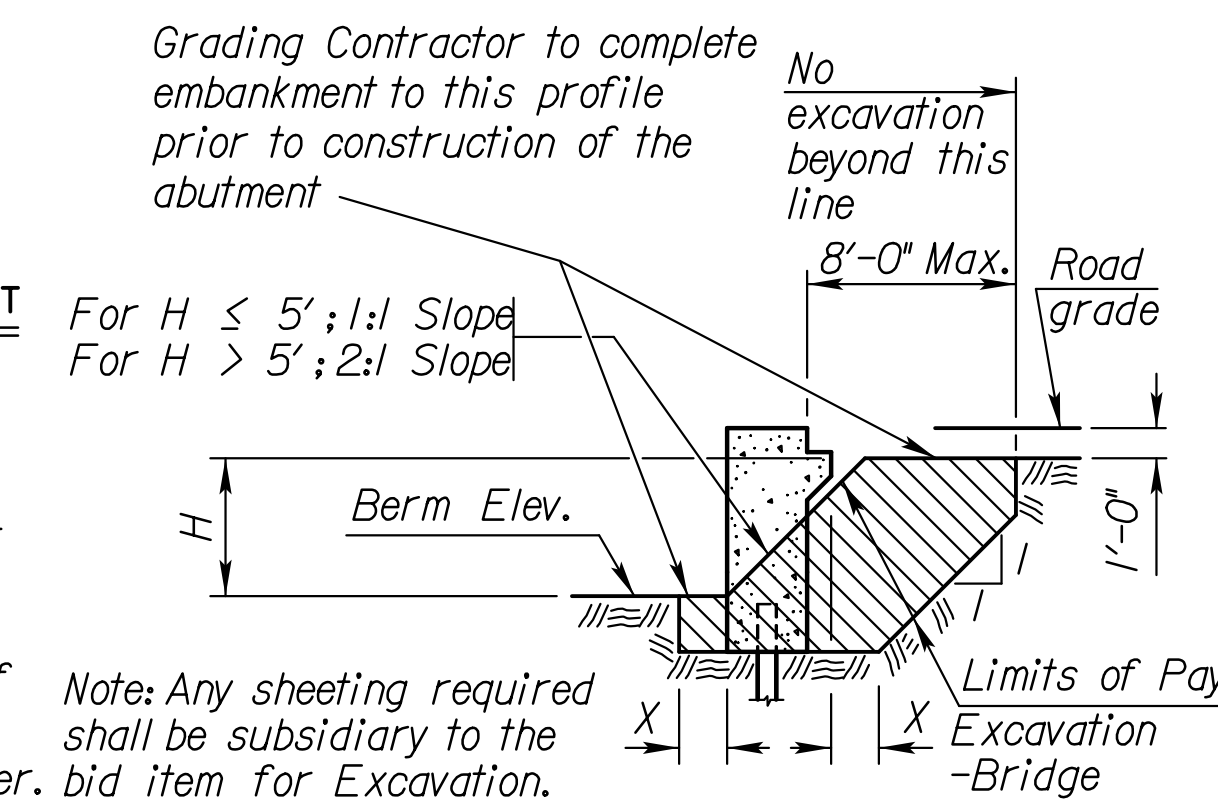
**EXCAVATION DETAILS FOR TYPICAL PIERS**

See detail when rock or shale (rock) is encountered.



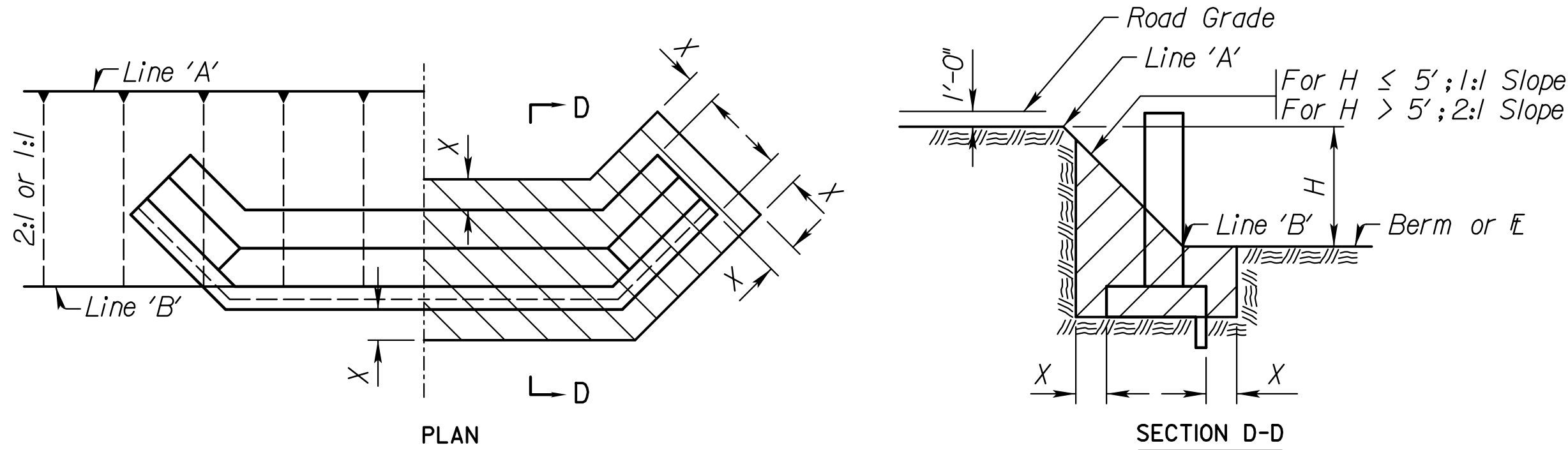
**EXCAVATION DETAILS FOR TYPICAL ABUTMENTS**

Note: Bridge Contractor shall finish the embankment and berms after the construction of the abutment and dispose of any excess material as approved by the Engineer. bid item for Excavation.



**EXCAVATION DETAILS FOR TYPICAL ABUTMENTS**

See detail when rock or shale (rock) is encountered.



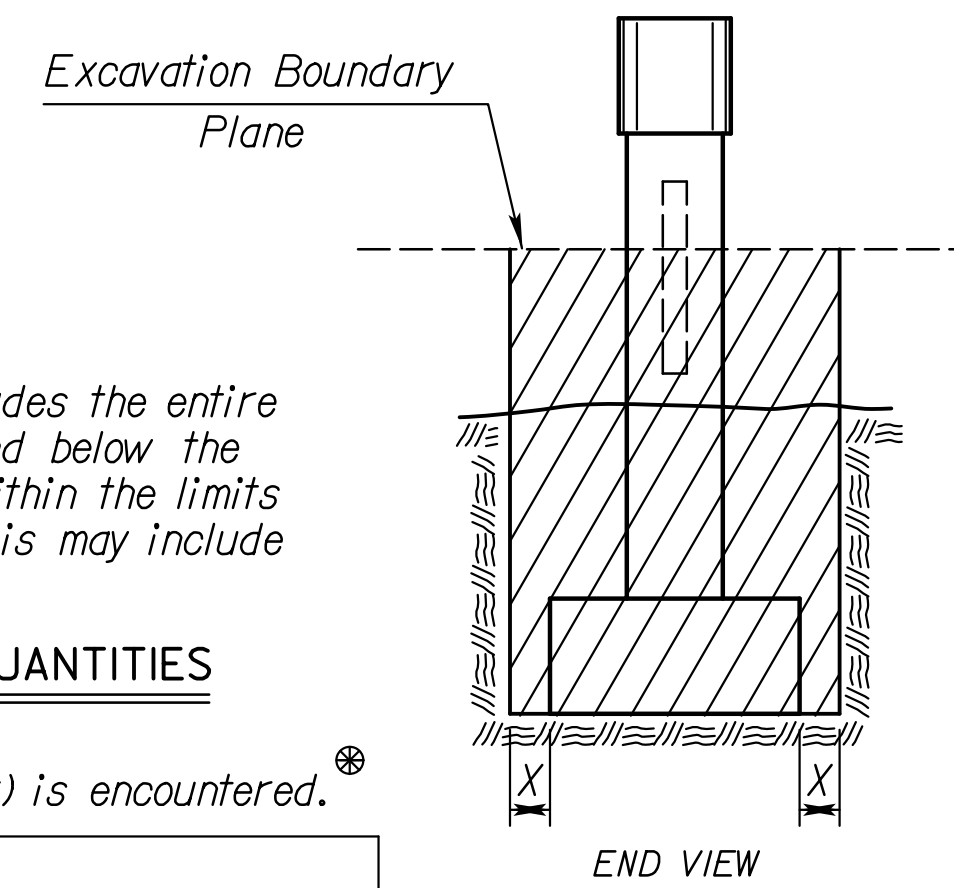
**EXCAVATION DETAILS FOR ABUTMENTS WITH FLARED WINGWALLS**

(Toe wall excavation shall be subsidiary)

Note: Class II Excavation includes the entire volume of whatever nature found below the "Excavation Boundary Plane", within the limits specified for measurement. This may include water or air.

**CLASS II EXCAVATION QUANTITIES**

See detail when rock or shale (rock) is encountered.

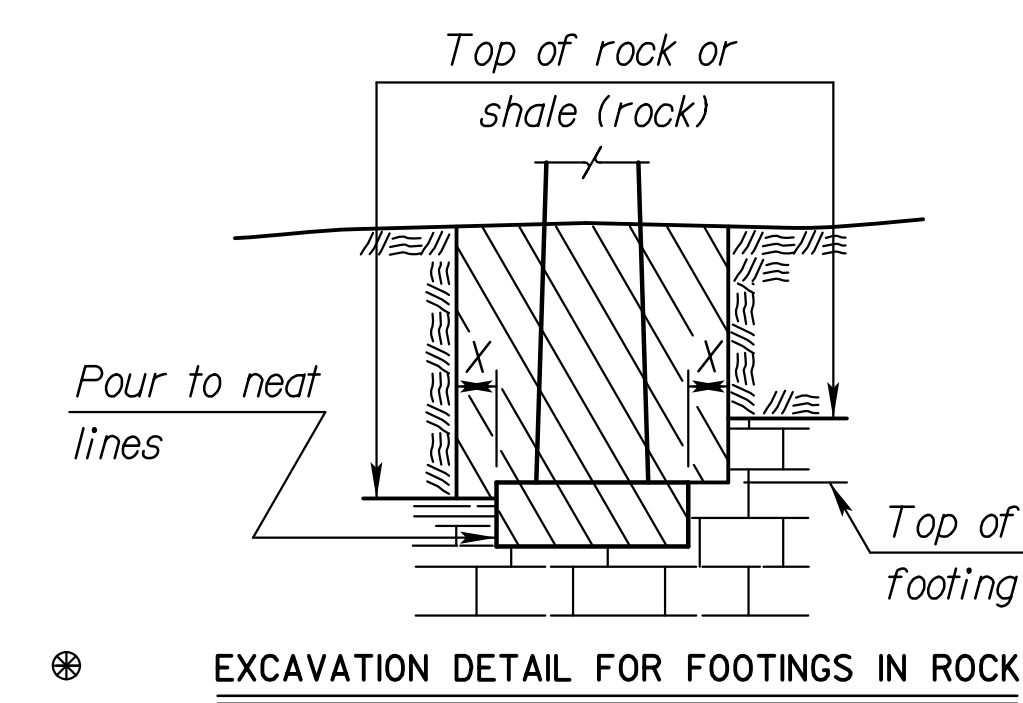


**EXCAVATION BOUNDARY PLANE**

Note: All bridge excavation shall be computed on the basis of the cross-hatch areas and boundary lines indicated on this sheet and the Excavation Boundary Plane on the Construction Layout.

Sides of trenches in hard or compacted soil including embankments shall be shored, sheeted, braced or otherwise supported when the trench is more than 5 feet in depth and 8 feet or more in length. In lieu of the shoring, the sides of the trench above the 5 foot level may be sloped to preclude collapse. The slope for average soils shall be 1:1. If the angle of repose of the soil is less, flatter slopes shall be required.

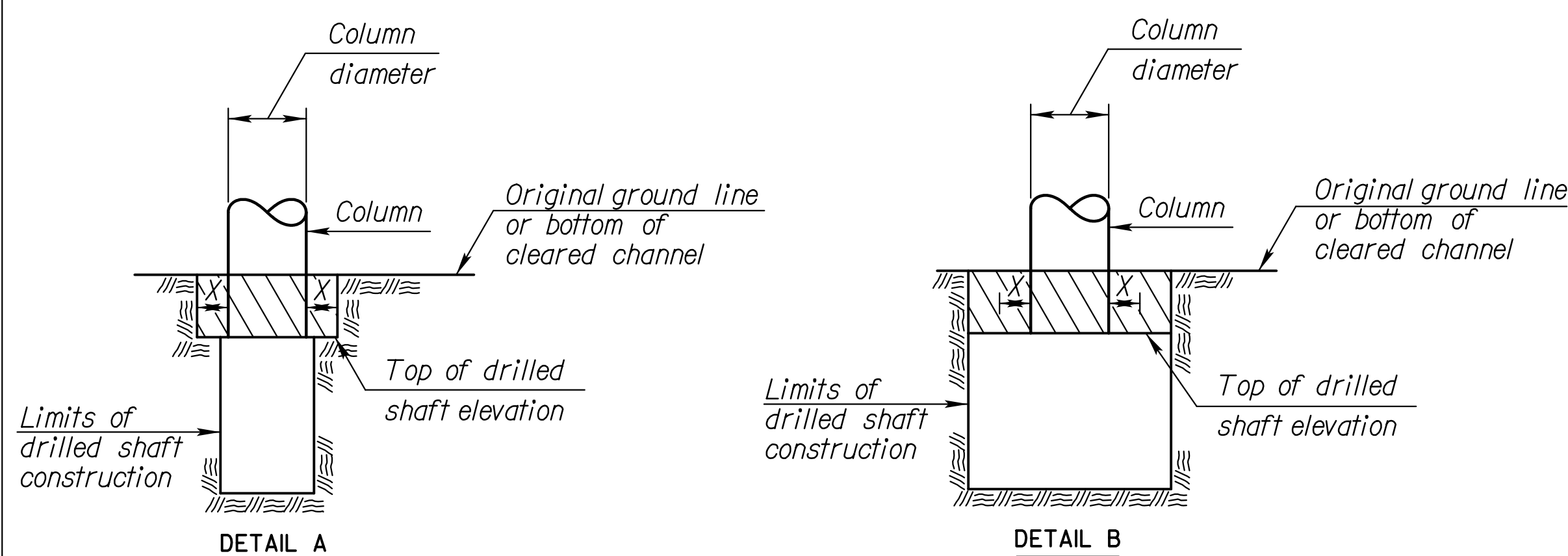
Dimension "X" shall be 2'-0" unless indicated otherwise on the general plans.  
Dimension "Y" shall be 1'-6" unless indicated otherwise on the general plans.



**EXCAVATION DETAIL FOR FOOTINGS IN ROCK OR SHALE (ROCK)**

(Piers and Abutments)

Note: Excavation below top of rock, hard shale or below top of footing, whichever is lower, shall be to neat lines of the concrete construction.



**DRILLED SHAFT DETAILS**

Note: Whenever the limits of the drilled shaft construction are greater than the Column Diameter + 2X, the limits of Class I, II or III Excavation shall be the limits of the drilled shaft construction. (See Detail B)

CONSULTANTS:

AMIDON AVE. BRIDGE  
 AT ARKANSAS RIVER

WICHITA, KANSAS

REVISIONS:	MARK	DATE	DESCRIPTION

PROJ NO: E1010-4025062  
 SCALE:  
 DATE: 07/08/2022  
 DESIGNED BY: JBM  
 DRAWN BY: JBM  
 CHECKED BY: WBS

SHEET TITLE:  
**BRIDGE EXCAVATION (LRFD) BR100A**

SHEET NO.  
**68**  
 SHEET 68 OF 128