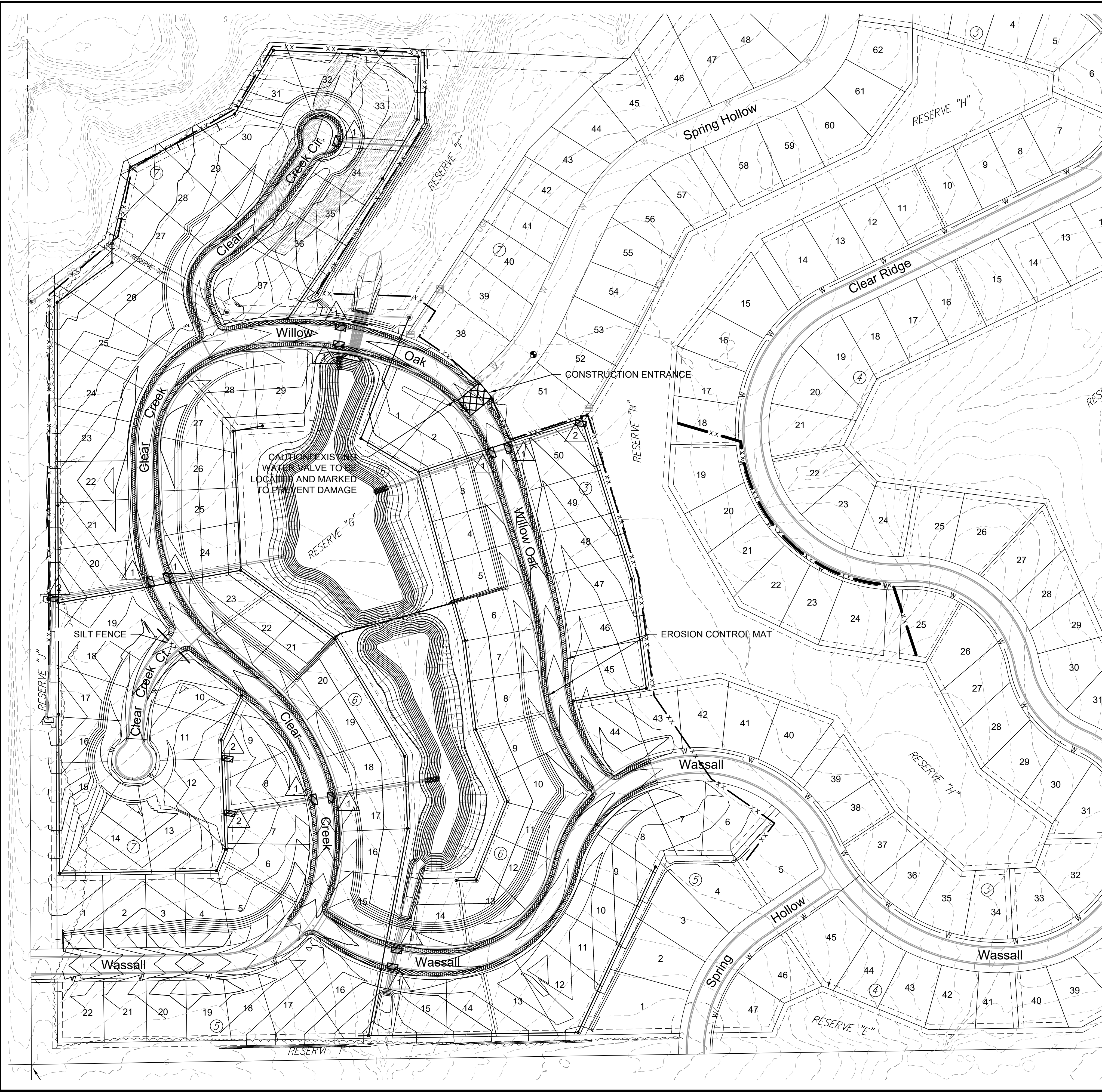
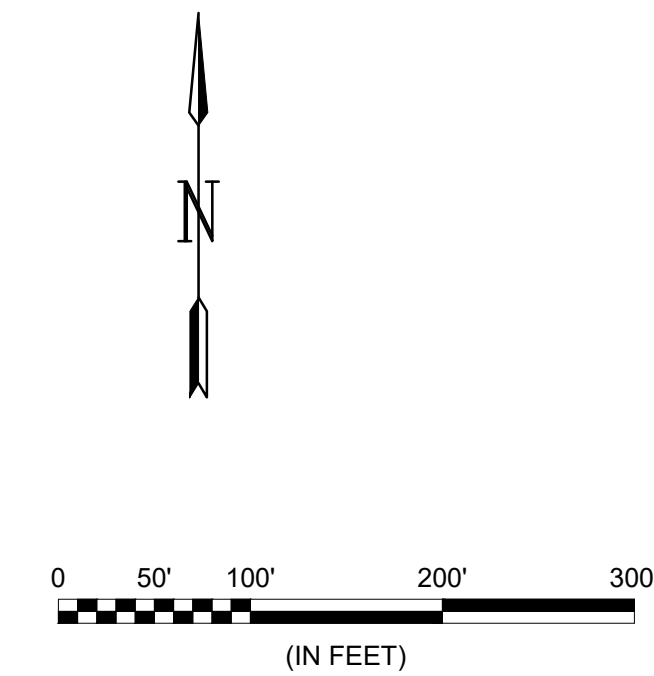

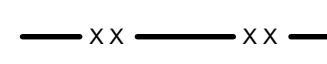
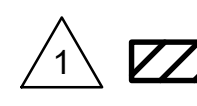
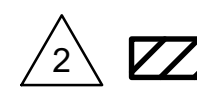
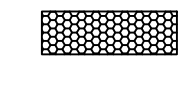
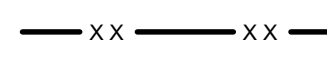


File: L:\2021\12\14\1002 - Clear Ridge Phase 2\Drawings\CDD\21141002 Erosion Control.dwg Last Save: 6/6/2022 10:27 AM Last saved by: DRS\standrich
 Last plotted by: Standrich, Daryl R Plot Style: --- Plot Scale: 1:2,5849 Plot Date: 6/7/2022 12:17 PM Plotter used: None



CAUTION: EXISTING
 WATER VALVE TO BE
 LOCATED AND MARKED
 TO PREVENT DAMAGE

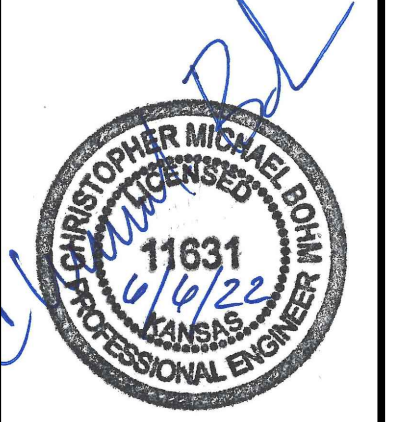


- LEGEND**
-  MAINTAIN CONSTRUCTION ENTRANCE (1 EACH)
 -  MAINTAIN SILT FENCE (4505 LIN. FT.)
 -  MAINTAIN CURB INLET PROTECTION (11 EACH)
 -  MAINTAIN DROP INLET PROTECTION (4 EACH)
 -  INSTALL EROSION CONTROL MAT (CURLEX) (6,825 SQ. YDS.)
 -  INSTALL SILT FENCE (80 LIN. FT.)
 (AT EDGE OF PAVEMENT OF CLEAR CREEK CT.)



© 2022 GARVER, LLC
 THIS DOCUMENT, ALONG WITH THE
 IDEAS AND DESIGNS CONVEYED
 HEREIN, SHALL BE CONSIDERED
 INSTRUMENTS OF PROFESSIONAL
 SERVICE AND ARE PROPERTY OF
 GARVER, LLC. ANY USE,
 REPRODUCTION, OR DISTRIBUTION
 OF THIS DOCUMENT, ALONG WITH
 THE IDEAS AND DESIGN CONTAINED
 HEREIN, IS PROHIBITED UNLESS
 AUTHORIZED IN WRITING BY
 GARVER, LLC OR EXPLICITLY
 ALLOWED IN THE GOVERNING
 PROFESSIONAL SERVICES
 AGREEMENT FOR THIS WORK.

1995 Midfield Road
 Wichita, KS 67209
 (316) 264-8008



REV.	DATE	DESCRIPTION	BY



CITY OF WICHITA
 WICHITA, KANSAS
 CLEAR RIDGE ADDITION
 PHASE 2 - PAVING

EROSION CONTROL PLAN

JOB NO.: 21T41002
 DATE: JUNE 2022
 DESIGNED BY: CMB
 DRAWN BY: DRS

BAR IS ONE INCH ON ORIGINAL DRAWING
 IF NOT ONE INCH ON THIS SHEET, ADJUST SCALES ACCORDINGLY.

DRAWING NUMBER