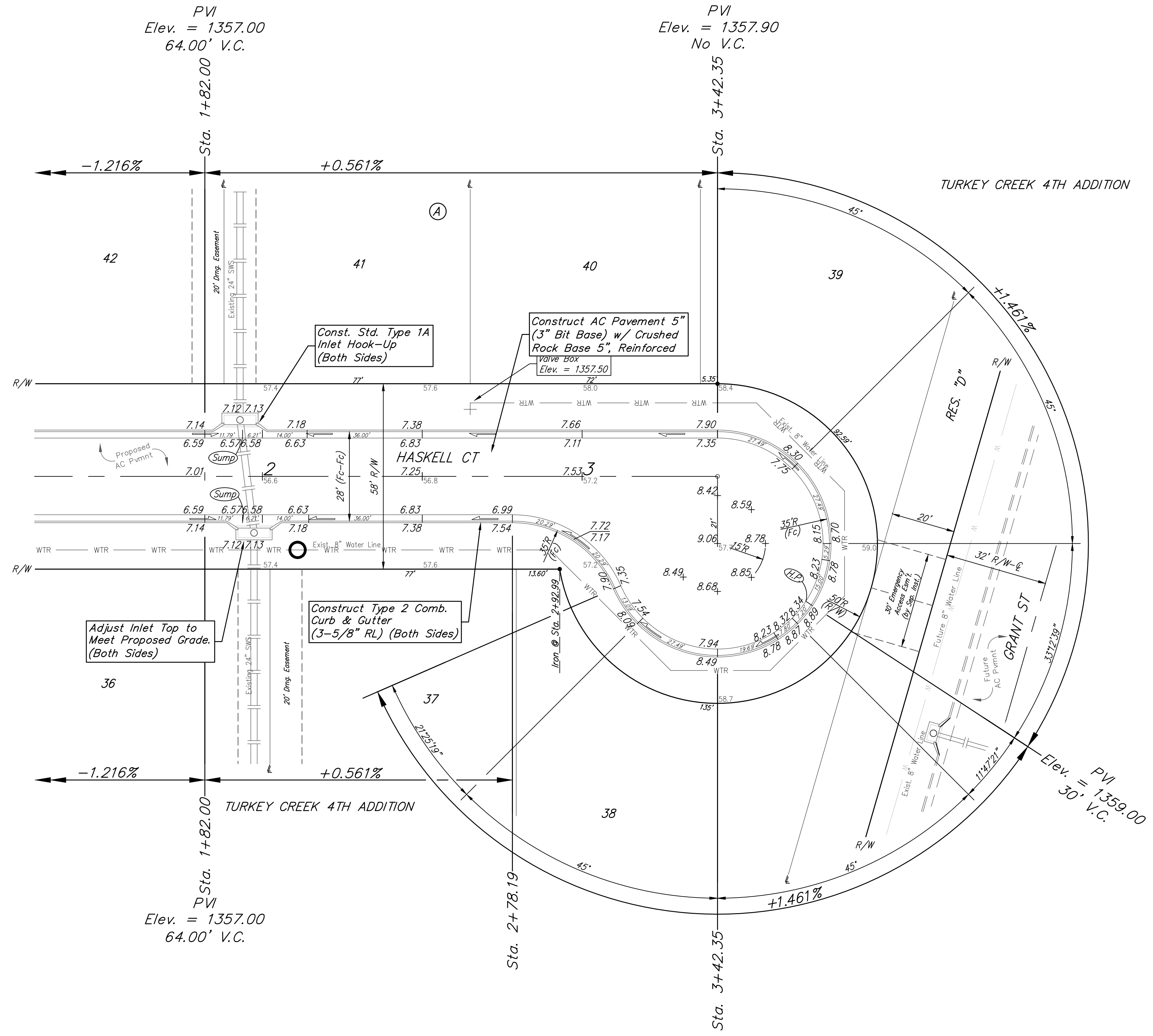
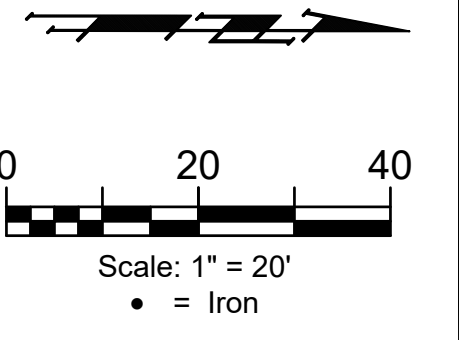


BENCHMARKS:
 135th St. W. & Pawnee
 City of Wichita Benchmark Disc,
 Northeast Corner of Intersection
 On SW Corner of Concrete Base
 of High Line Pole.
 Elev. = 1359.65 NGVD29

City of Wichita Benchmark Disc,
 0.4 Mi. South of Kellogg On
 135th St. W., West Side of
 Concrete Base for High Line
 Pole, West of K.G.&E.
 Substation, 135± South of
 Railroad Tracks On East Side of
 135th St. W.
 Elev. = 1367.77 NGVD29



Adjust Inlet Top to Meet Proposed Grade. (Both Sides)

Construct Type 2 Comb. Curb & Gutter (3-5/8" RL) (Both Sides)

Const. Std. Type 1A Inlet Hook-Up (Both Sides)

Construct AC Pavement 5" (3" Bit Base) w/ Crushed Rock Base 5", Reinforced

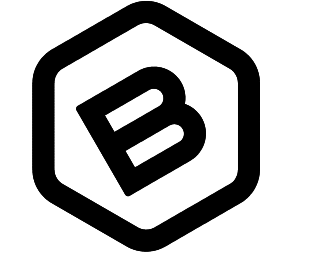
SUBDIVISION BENCHMARKS

Street & Station	Location Description	Elevation
Haskell 5+06.49, 14.25' Lt.	Adjacent to Fire Hydrant at the West End of the North Return Haskell & Haskell Ct, SE Cor., Lot 43, Blk A, Turkey Creek 4th Addn.	
Haskell Ct. 2+91.14, 14.25' Rt.	Adjacent to Fire Hydrant West of the SW Cor., Lot 29, Blk A, Turkey Creek 4th Addn.	

VALVE LOCATION TABLE

VALVE NUMBER	STREET	BASELINE STATION	OFFSET DISTANCE	OFFSET DIRECTION
1	Haskell	3+95.77	23'	Lt.
2	Haskell Ct	7+00.75	23'	Rt.
3	Haskell Ct	7+04.75	23'	Rt.

Roll type curb & gutter to be constructed on the pavement on this sheet.
 Top of curb elevation are given for full height curb.



BAUGHMAN COMPANY

315 Ellis St.
 Wichita, KS 67211
 316-262-7271
 BaughmanCo.com

TURKEY CREEK 4TH ADDITION
 PHASE 1B

HASKELL CT
 Lots 34-43, Block A

Street Paving Improvements
 Sta. 1+82.00 to Sta. 2+78.19

PROJECT NUMBER:
 472-2020-085618

DESIGN: DMV DRAWN: JAK
 DATE: 7/22/22

SHEET OF
11 25

File: E:\Projects\Turkey Creek 4th_1\Engineering\Phase 1B\ISTR 21-09-E015.DWG