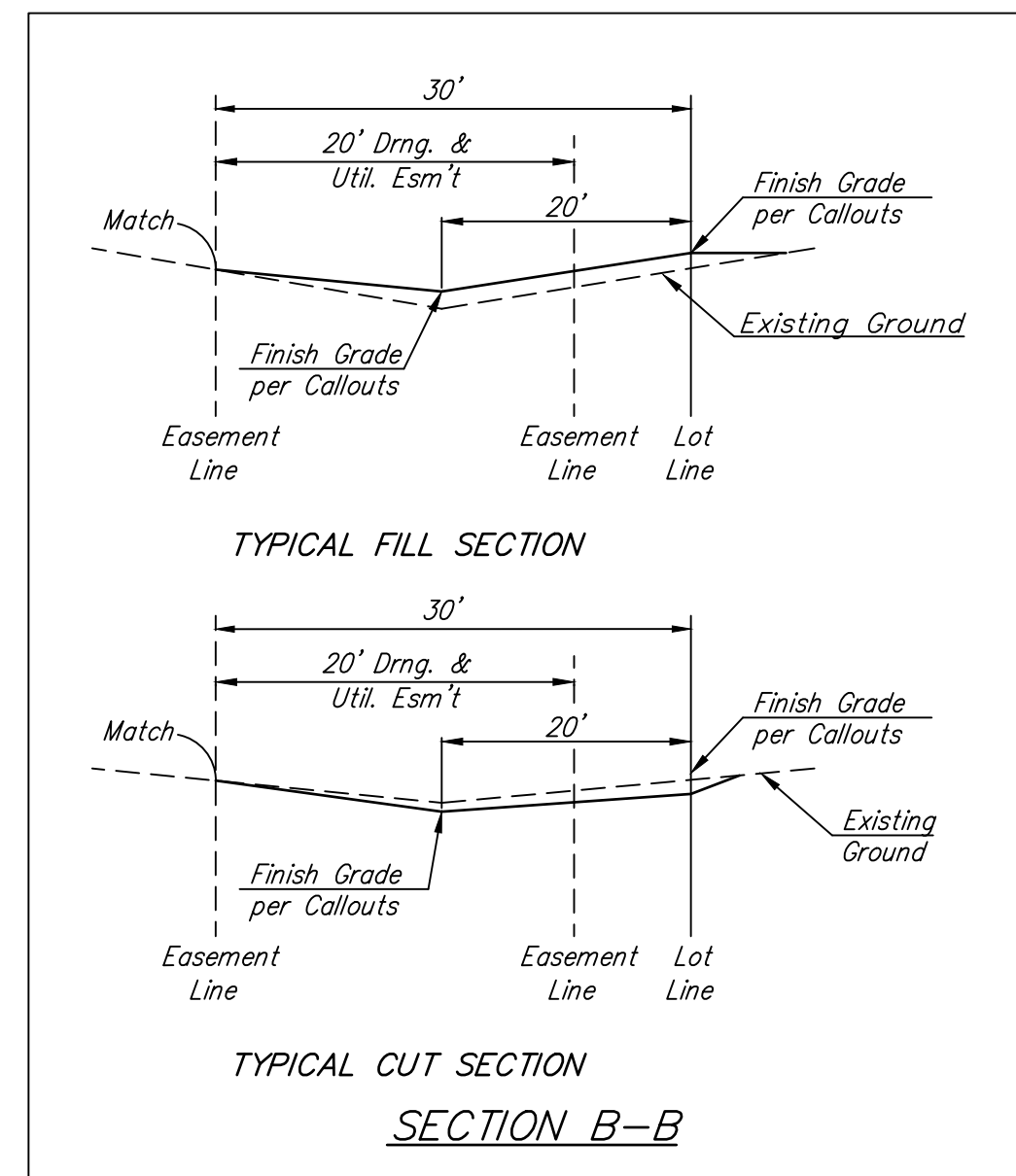
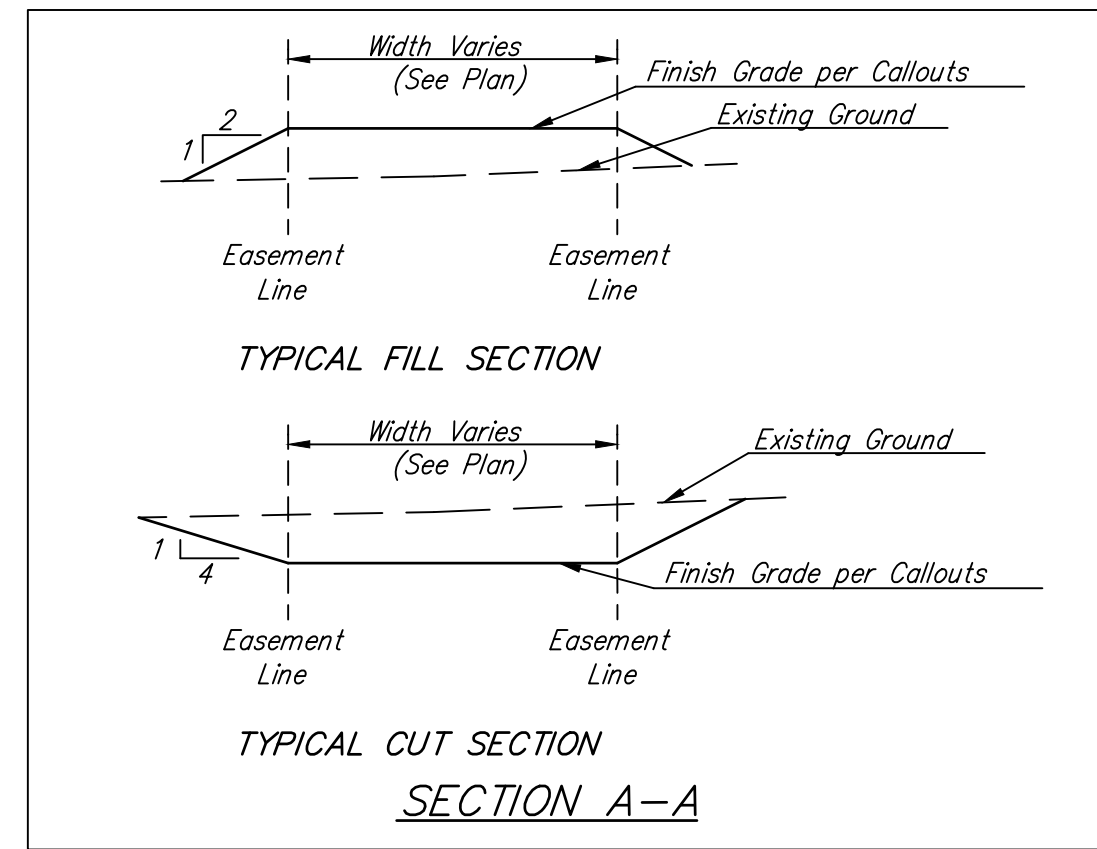


BENCHMARKS:
 135th St. W. & Pawnee
 City of Wichita Benchmark Disc,
 Northeast Corner of Intersection
 On SW Corner of Concrete Base
 of High Line Pole.
 Elev. = 1359.65 NGVD29

City of Wichita Benchmark Disc,
 0.4 Mi. South of Kellogg On
 135th St. W., West Side of
 Concrete Base for High Line
 Pole, West of K.G.&E.
 Substation, 135± South of
 Railroad Tracks On East Side of
 135th St. W.
 Elev. = 1367.77 NGVD29



= Easements To Be Graded

All Easements have been previously graded with the Phase 1 Storm Water Drain Project. The Contractor of this project shall "fine grade" all designated easements to the specified elevations.

The Contractor shall "straight" grade the easements between the elevations given. Where a callout designates "Match", the Contractor will grade to the existing ground elevation.

Excess excavation from easement grading and from pavement construction shall be stockpiled on Turkey Creek Commercial Addition immediately south of the proposed project area.

All cost to be included in the Lump Sum bid item "Easement Grading"

EROSION CONTROL MEASURE	INSTALL	MAINTAIN
BACK OF CURB PROTECTION (LF)	2,502	0
CONSTRUCTION ENTRANCE (EA)	0	1
CURB INLET BARRIER (EA)	5	0
DROP INLET PROTECTION (EA)	9	0

* ALL EXISTING BMPs INCLUDING CONSTRUCTION ENTRANCE, SEDIMENT BARRIERS, SILT FENCE, CUT-OFF TRENCH, AND EROSION CONTROL MAT SHALL BE MAINTAINED AND REPAIRED IF NECESSARY.

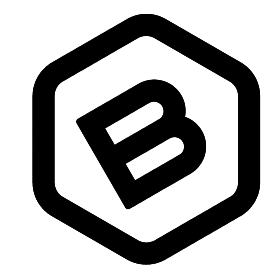
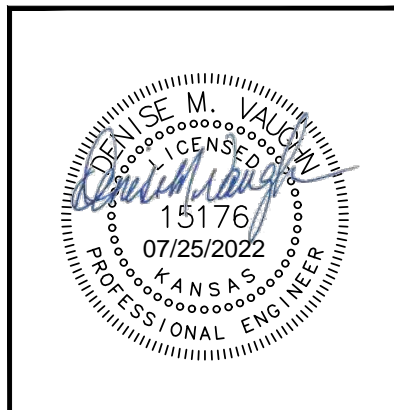
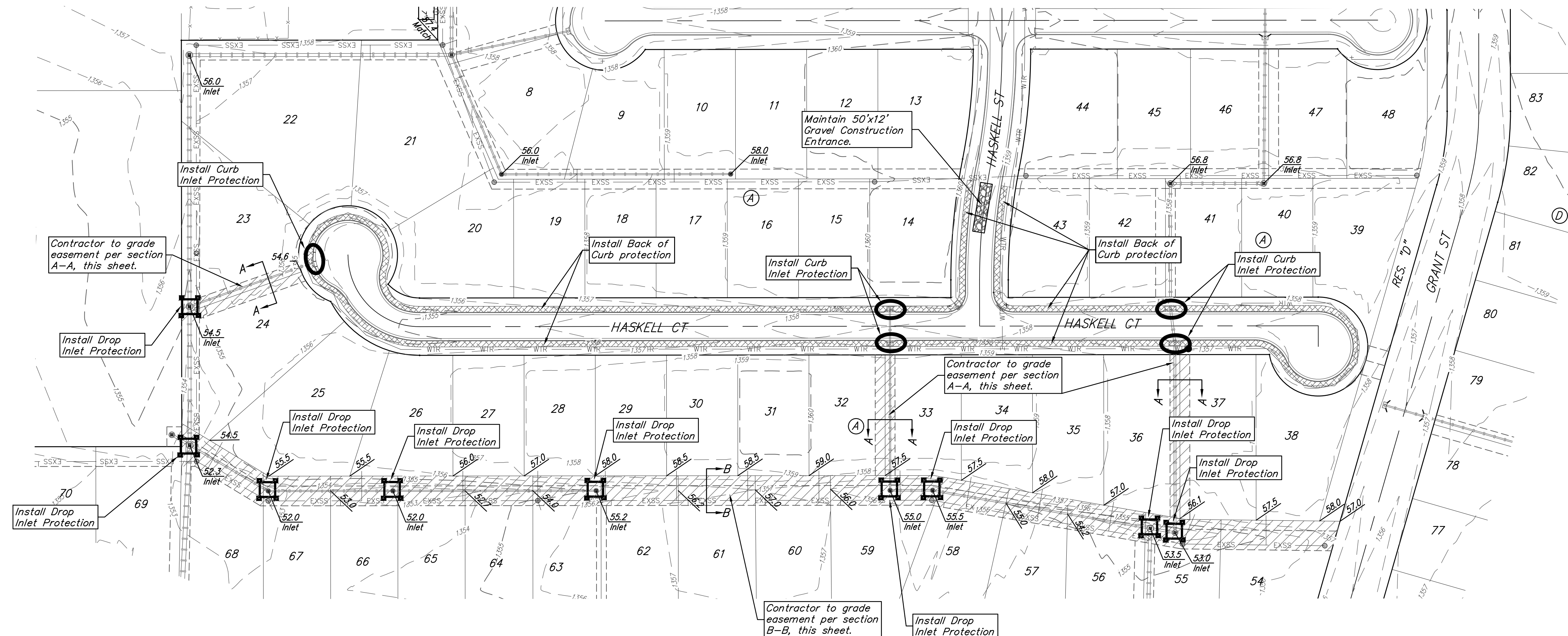
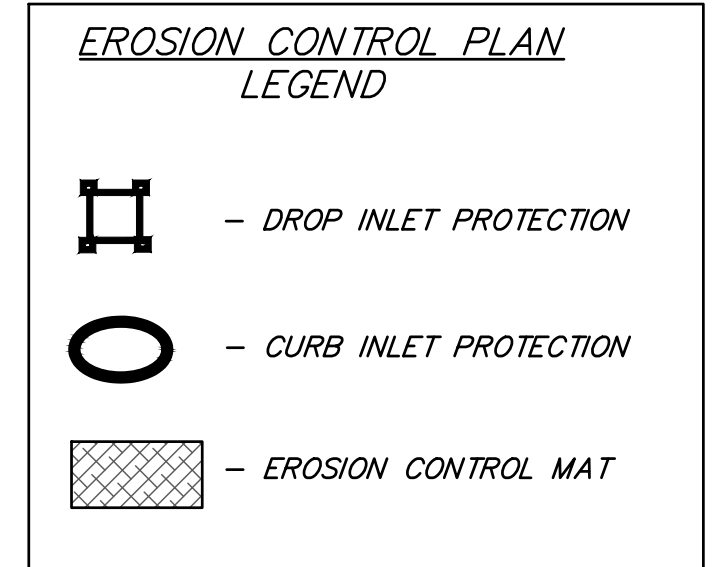
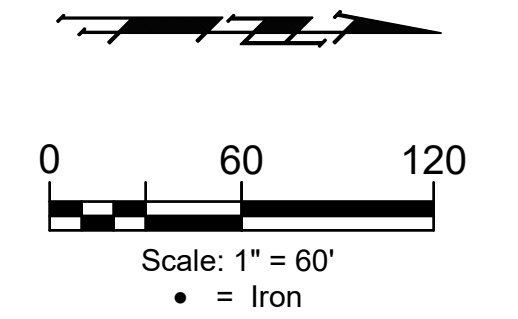
NOTES:

1. Contractor shall make sure all erosion control is in place before project is accepted. This plan represents the minimum standard. Any additional erosion control measures shall be installed by the Contractor as needed.

2. Removal of Gravel Construction Entrance for pavement construction shall be included in bid item "Site Restoration"

3. This Plan Is Not To Be Used As A Comprehensive Grading Plan. All Spot Elevations Are Proposed & Subject To Change.

All areas disturbed during construction shall be seeded, mulched, and fertilized as per Cover Sheet General Notes.



BAUGHMAN COMPANY
 315 Ellis St.
 Wichita, KS 67211
 316-262-7271
 BaughmanCo.com

TURKEY CREEK 4TH ADDITION - PHASE 1B

EROSION CONTROL

Street Paving Improvements
 PROJECT NUMBER:
 472-2020-085618
 DESIGN: DMV DRAWN: JAK
 DATE: 7/22/22
 SHEET **12** OF **25**

File: E:\Projects\Turkey Creek 4th_Phase 1B\Engineering\Phase 1B\STR 21-09-E015.DWG