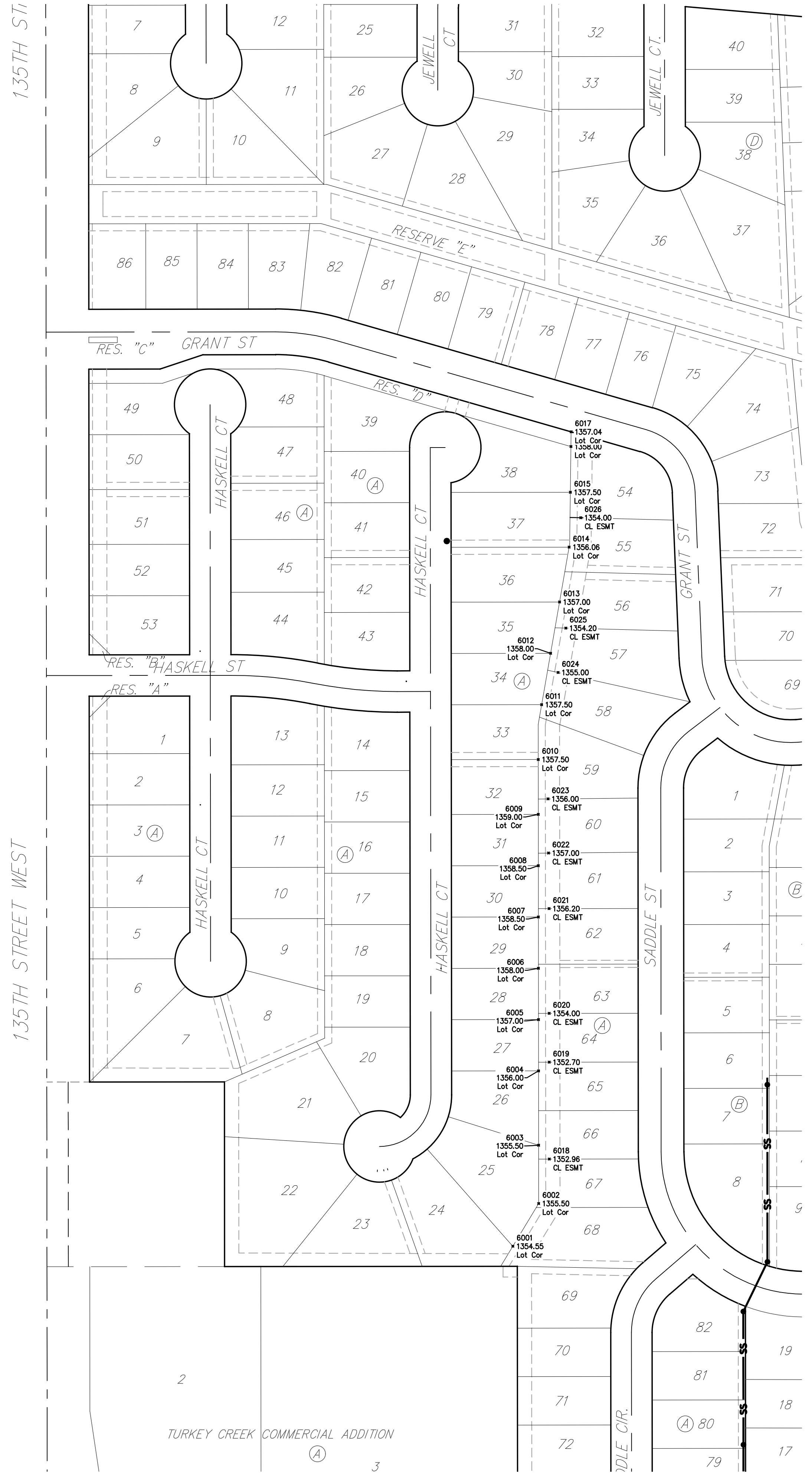


BENCHMARKS:
 135th St. W. & Pawnee
 City of Wichita Benchmark Disc,
 Northeast Corner of Intersection
 On SW Corner of Concrete Base
 of High Line Pole.
 Elev. = 1359.65 NGVD29

City of Wichita Benchmark Disc,
 0.4 Mi. South of Kellogg On
 135th St. W., West Side of
 Concrete Base for High Line
 Pole, West of K.G.&E.
 Substation, 135'± South of
 Railroad Tracks On East Side of
 135th St. W.
 Elev. = 1367.77 NGVD29

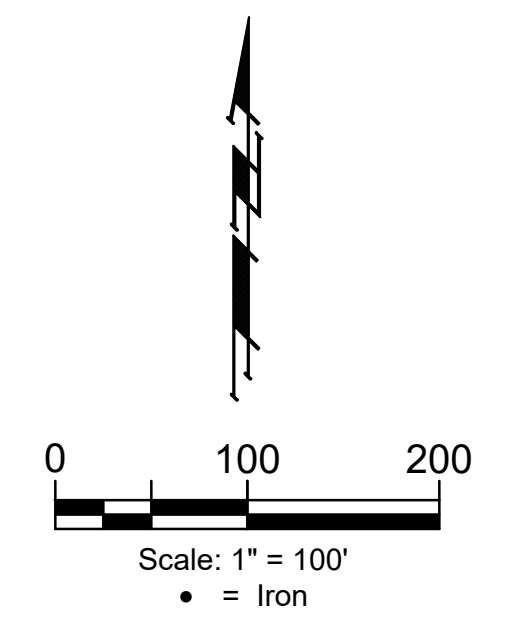


IRON S		
Point #	Northing	Easting
5	27,409.65	26,374.75
6	27,409.88	26,290.75
7	27,411.88	25,540.53
8	27,981.91	25,539.98
9	27,981.51	25,129.18
10	28,240.67	25,128.92
11	28,240.49	24,939.72
14	29,940.46	24,938.07
15	30,213.73	24,940.55
16	30,277.72	24,941.13
17	30,421.04	24,942.43
18	30,395.11	25,231.07
19	30,610.28	25,233.01
20	30,524.78	26,190.13
21	30,499.70	26,189.92
22	30,485.79	26,345.67
71	28,006.87	26,376.95
72	27,974.32	26,125.45
73	27,910.32	26,125.28
74	27,974.51	26,054.26
75	27,974.68	25,990.26
76	27,910.67	25,993.09
77	27,910.52	26,051.09
80	27,910.81	25,941.37
81	27,974.81	25,941.37
82	27,970.70	25,786.25
83	28,014.66	25,748.42
84	27,986.71	25,715.93
85	27,942.74	25,753.76
86	27,888.80	25,671.07
87	27,888.85	25,729.07
88	27,622.15	25,671.33
89	27,622.21	25,729.33
90	28,142.58	25,709.82
91	28,142.65	25,773.82
92	30,212.52	25,073.80
93	30,212.00	25,131.80
94	30,210.29	25,320.49
95	30,274.29	25,321.06
96	30,271.74	25,345.71
97	30,290.96	25,354.26
139	30,475.38	26,521.52
140	29,929.91	26,517.25
141	29,901.66	26,461.55
144	30,248.17	25,398.71
145	29,848.82	26,347.31
146	30,267.38	25,407.25
147	29,787.72	26,366.65
148	29,779.67	26,369.20
150	29,731.65	26,100.33
151	29,730.05	26,042.35
152	29,749.70	25,775.56
153	29,754.62	25,717.56
154	30,319.17	25,360.39
155	30,335.13	25,360.53
156	30,318.65	25,418.38
157	30,334.60	25,418.53
158	30,384.94	25,474.06
159	30,442.71	25,479.22
160	30,363.75	26,363.22
161	30,310.67	26,305.50
162	29,747.64	25,399.26
163	29,747.70	25,457.26
164	29,813.57	25,421.38
165	29,820.82	25,426.86
166	29,922.08	25,388.09
167	29,922.15	25,452.09
168	29,710.86	25,074.29
169	29,710.92	25,132.29
170	29,778.55	25,467.61
171	29,785.79	25,473.09
185	28,883.51	26,740.78
186	28,822.84	26,720.40
187	28,918.61	26,573.78
188	28,921.58	26,509.85
189	28,960.37	26,511.65
190	28,957.39	26,575.59
191	29,770.78	25,527.23

IRON S		
Point #	Northing	Easting
192	29,834.55	25,532.64
193	30,142.36	25,387.87
194	30,142.43	25,451.87
195	28,868.09	26,233.08
196	28,844.22	26,180.23
197	28,811.46	26,121.63
198	28,757.09	26,155.39
199	28,721.09	26,085.33
200	28,700.51	26,024.73
201	29,325.00	24,938.67
202	29,241.00	24,938.75
203	29,241.09	25,038.75
204	29,261.15	25,098.73
205	29,325.25	25,200.87
206	29,261.25	25,200.94
207	29,250.82	25,275.24
208	29,312.33	25,292.93
209	29,130.90	25,388.86
210	29,081.60	25,446.91
211	28,840.13	25,080.14
212	28,840.19	25,138.14
219	28,782.13	25,080.20
220	28,782.00	24,939.20
221	28,782.19	25,138.20
222	28,840.00	24,939.14
223	28,828.31	25,260.40
224	28,771.41	25,249.19
225	28,817.53	25,371.39
226	28,817.55	25,389.16
227	28,450.52	25,080.52
228	28,450.58	25,138.52
229	28,759.53	25,371.45
230	28,759.55	25,389.22
231	28,222.36	25,389.74
232	28,190.53	25,375.84
233	28,132.55	25,393.36
234	28,222.42	25,447.74
235	28,653.07	25,709.32
236	28,653.14	25,773.32
237	28,758.16	25,761.27
238	28,707.27	25,800.08
239	28,723.24	25,821.02
240	28,774.13	25,782.20
241	28,749.17	25,930.83
242	28,685.35	25,935.65
243	28,060.20	26,000.19
244	28,045.70	26,062.52
245	28,179.19	26,013.79
246	28,179.25	26,077.79
247	28,412.28	26,013.56
248	28,412.34	26,077.56
249	28,628.34	26,030.79
250	28,618.13	26,093.97
251	28,977.36	26,120.08
252	29,001.24	26,172.94
253	28,835.42	25,786.95
254	28,838.06	25,830.90
302	29,067.36	25,757.36
303	29,070.01	25,821.31
304	29,125.31	25,711.82
305	29,186.82	25,729.51
306	29,733.34	25,968.21
307	29,797.11	25,973.62
308	29,605.20	26,380.86
312	29,138.16	26,467.05
322	29,486.77	26,107.07
323	29,485.18	26,049.09
324	27,411.02	25,860.53
325	28,857.58	26,506.87
326	29,581.59	25,775.72
327	29,581.53	25,717.72
328	28,617.63	26,699.88
329	28,538.87	26,635.77
330	29,673.07	25,399.33
331	29,673.12	25,457.33
332	28,361.39	26,635.29
333	28,168.19	26,506.60
334	28,159.70	26,377.36

CONTROL POINTS				
Point #	Northing	Easting	Elevation	Description
501	32,584.2511	24,901.9620	1366.70	NWCOR
502	32,612.5345	27,513.2790	1325.61	N1\VCOR
503	29,999.2062	30,061.9904	1333.50	E1\VCOR
504	27,360.7795	29,997.1756	1338.20	SECOR
505	27,353.6372	24,880.5891	1358.02	SWCOR
506	29,939.1106	24,878.0695	1366.43	W1\VCOR
507	29,997.8467	27,492.8160	1334.18	CTR
508	27,346.8142	27,439.2191	1333.41	S1\VCOR
600	27,336.6847	26,119.5657	1339.21	R
601	27,364.6539	28,223.1868	1330.75	R
602	29,803.9021	30,075.2780	1334.18	N
603	29,939.4530	24,908.1014	1365.98	AMPAS
606	29,999.0617	30,022.0677	1332.77	ARMS
702	27,442.5021	24,976.7303	1358.33	CP
710	32,566.6460	26,958.6371	1325.10	CP
718	30,423.5176	24,912.6403	1365.69	AMPAS
801	27,376.5081	29,966.0843	1338.36	PK
802	27,442.5020	24,976.7297	1358.33	CP
803	29,899.3402	24,954.8777	1364.55	CP
804	30,073.3954	27,453.1970	1336.70	CP
811	32,473.9399	26,206.4853	1339.68	4BF
812	30,624.5020	26,190.8900	1351.93	4BF
813	30,569.4664	26,223.8216	1353.88	CP
815	31,305.1478	27,502.8961	1331.34	4BF
816	30,731.9777	27,498.3831	1330.43	4BF
817	30,351.3881	24,911.8592	1364.84	4BF
822	27,390.4577	30,036.2467	1336.08	BMCOW
843	30,634.0826	24,962.6211	1368.48	N
845	27,365.8112	28,315.3123	1334.40	BMCOW

ESMT GRADING POINTS				
Point #	Northing	Easting	Elevation	Description
6001	28,010.0542	25,533.6346	1354.55	Lot Cor
6002	28,069.9509	25,569.8913	1355.50	Lot Cor
6003	28,151.7732	25,569.8116	1355.50	Lot Cor
6004	28,256.1151	25,569.7099	1356.00	Lot Cor
6005	28,328.1151	25,569.6398	1357.00	Lot Cor
6006	28,400.1150	25,569.5696	1358.00	Lot Cor
6007	28,472.1150	25,569.4994	1358.50	Lot Cor
6008	28,544.1150	25,569.4293	1358.50	Lot Cor
6009	28,616.1149	25,569.3591	1359.00	Lot Cor
6010	28,693.1149	25,569.2841	1357.50	Lot Cor
6011	28,770.1196	25,574.0807	1357.50	Lot Cor
6012	28,842.1319	25,586.6528	1358.00	Lot Cor
6013	28,914.1442	25,599.2248	1357.00	Lot Cor
6014	28,991.1573	25,612.6699	1356.06	Lot Cor
6015	29,068.1590	25,614.3985	1357.50	Lot Cor
6016	29,132.2760	25,615.2032	1358.00	Lot Cor
6017	29,153.0112	25,615.4634	1357.04	Lot Cor
6018	28,132.3732	25,584.8305	1352.96	CL ESMT
6019	28,268.3732	25,584.6980	1352.70	CL ESMT
6020	28,336.8756	25,584.6312	1354.00	CL ESMT
6021	28,483.8595	25,584.4880	1356.20	CL ESMT
6022	28,561.8077	25,583.7650	1357.00	CL ESMT
6023	28,637.8046	25,583.0781	1356.00	CL ESMT
6024	28,815.2097	25,597.1795	1355.00	CL ESMT
6025	28,877.4852	25,608.0517	1354.20	CL ESMT
6026	29,032.4181	25,628.9511	1354.00	CL ESMT



BAUGHMAN COMPANY
 315 Ellis St.
 Wichita, KS 67211
 316-262-7271
 BaughmanCo.com

TURKEY CREEK 4TH ADDITION - PHASE 1B

COORDINATES

Street Paving Improvements
 PROJECT NUMBER:
 DESIGN: DMV DRAWN: JAK
 DATE: Oct. 7, 2021
 SHEET 24 OF 25

File: E:\Projects\Turkey Creek 4th_Phase 1B\STR 21-09-E015.DWG