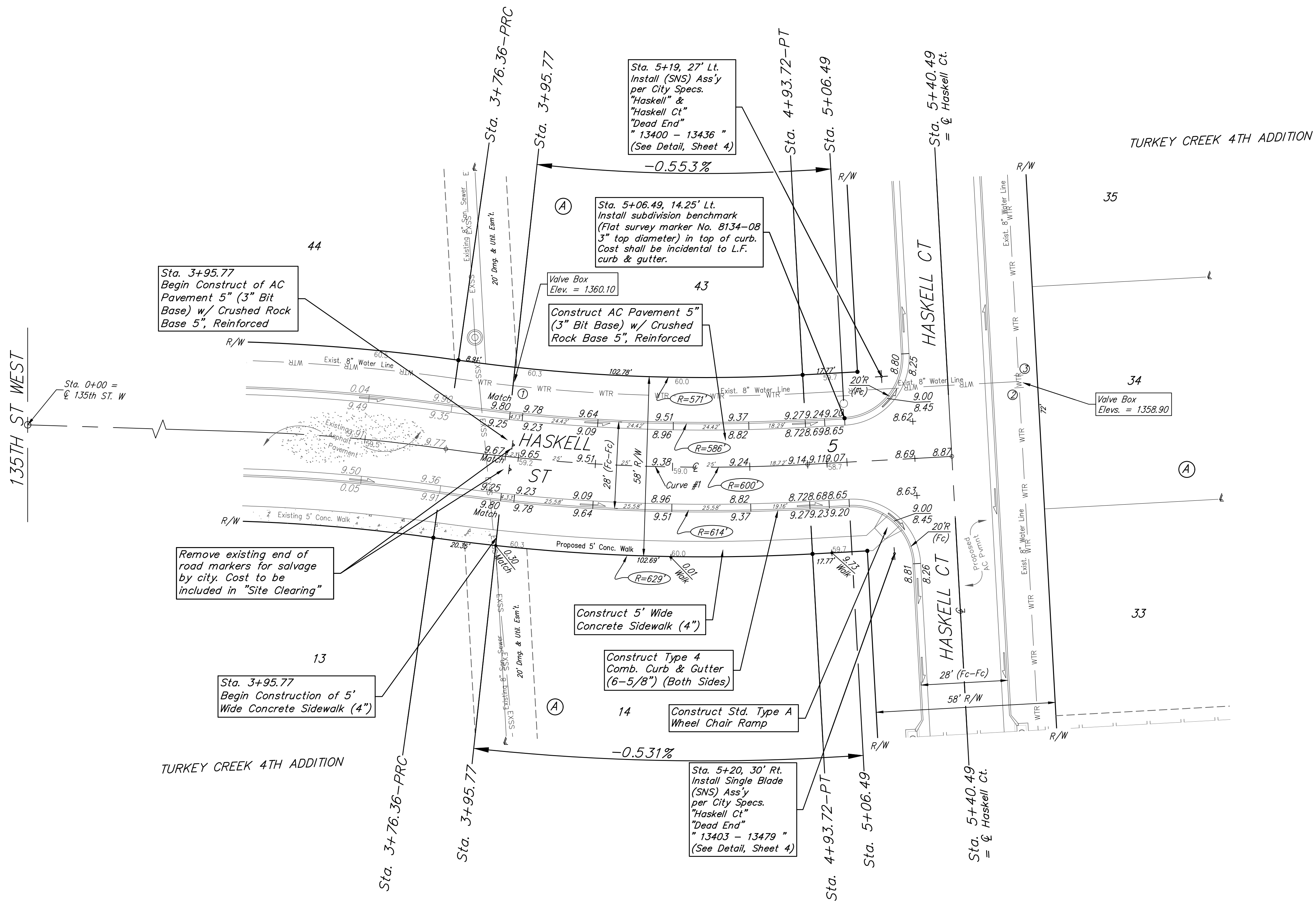
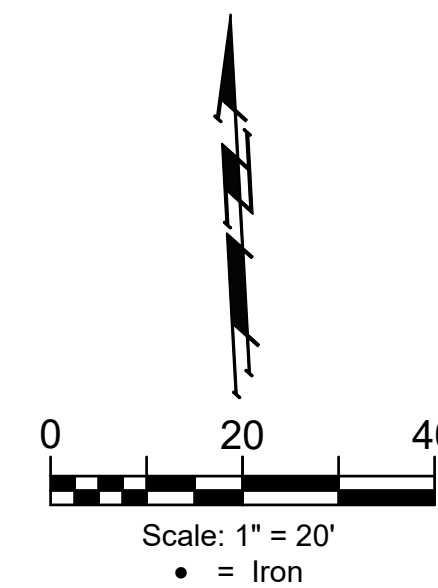


BENCHMARKS:
 135th St. W. & Pawnee
 City of Wichita Benchmark Disc,
 Northeast Corner of Intersection
 On SW Corner of Concrete Base
 of High Line Pole.
 Elev. = 1359.65 NGVD29

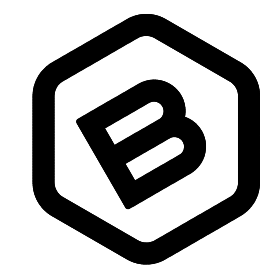
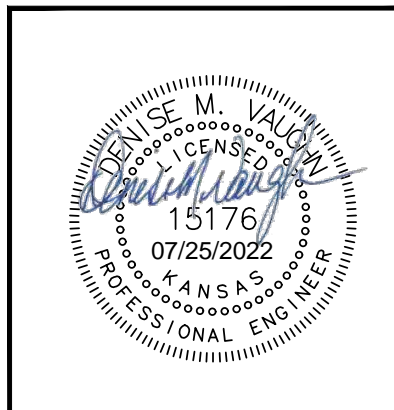
City of Wichita Benchmark Disc,
 0.4 Mi. South of Kellogg On
 135th St. W., West Side of
 Concrete Base for High Line
 Pole, West of K.G.&E.
 Substation, 135± South of
 Railroad Tracks On East Side of
 135th St. W.
 Elev. = 1367.77 NGVD29



Curve #1

Curve Data Based on Centerline
 Rad. = 600' Delta = 111°2'36" Tangent = 58.88'
 Arc = 117.36' L.C. = 117.20' Def./Ft. = 2.86554 Min.

Station	Arc	Face Chord Lengths		Defl.	Total Defl.
		8' Left	8' Right		
3+76.36	-	-	-	0'00'00"	0'00'00"
3+95.77	19.41'	18.70'	20.13'	0'55'37"	0'55'37"
4+00.00	4.23'	4.08'	4.39'	0'12'07"	1'07'44"
4+25.00	25.00'	24.09'	25.92'	1'11'39"	2'19'23"
4+50.00	25.00'	24.09'	25.92'	1'11'38"	3'31'01"
4+75.00	25.00'	24.09'	25.92'	1'11'38"	4'42'39"
4+93.72	18.72'	18.04'	19.41'	0'53'39"	5'36'18"



**BAUGHMAN
 COMPANY**

315 Ellis St.
 Wichita, KS 67211
 316-262-7271
 BaughmanCo.com

TURKEY CREEK 4TH ADDITION
 PHASE 1B

HASKELL

Street Paving Improvements
 Sta. 3+95.77 to Sta. 5+06.49

PROJECT NUMBER:
 472-2020-085618

DESIGN: DMV DRAWN: JAK

DATE: 7/22/22

SHEET **6** OF **25**

File: E:\Projects\Turkey Creek 4th_Phase 1B\Engineering\Phase 1B\STR 21-09-EO15.DWG