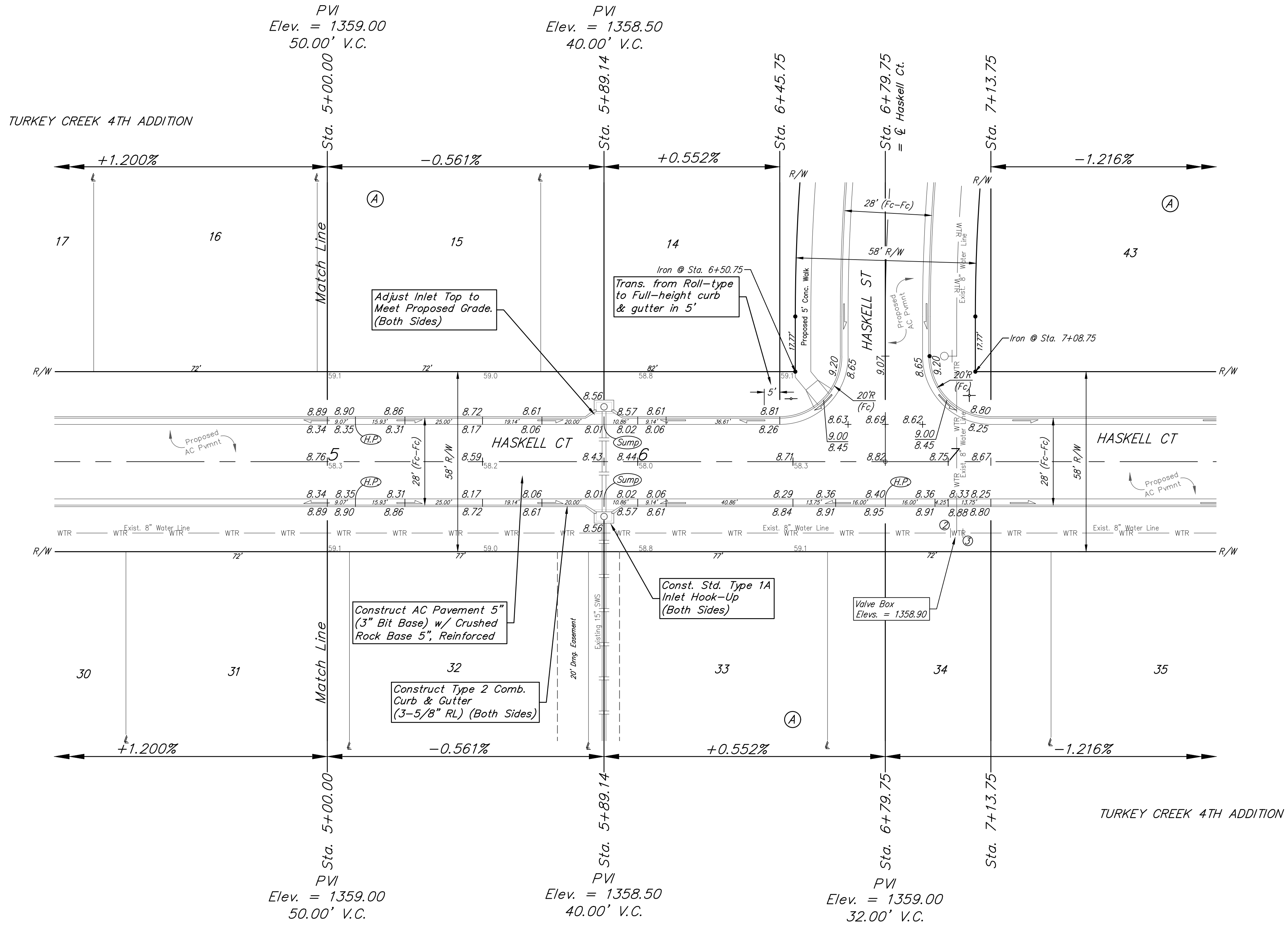
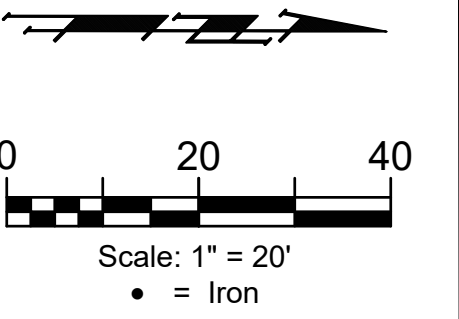


BENCHMARKS:
 135th St. W. & Pawnee
 City of Wichita Benchmark Disc,
 Northeast Corner of Intersection
 On SW Corner of Concrete Base
 of High Line Pole.
 Elev. = 1359.65 NGVD29

City of Wichita Benchmark Disc,
 0.4 Mi. South of Kellogg On
 135th St. W., West Side of
 Concrete Base for High Line
 Pole, West of K.G.&E.
 Substation, 135± South of
 Railroad Tracks On East Side of
 135th St. W.
 Elev. = 1367.77 NGVD29



Roll type curb & gutter to be constructed on the pavement on this sheet. Top of curb elevation are given for full height curb.

BAUGHMAN COMPANY
 315 Ellis St.
 Wichita, KS 67211
 316-262-7271
 BaughmanCo.com

TURKEY CREEK 4TH ADDITION
 PHASE 1B

HASKELL CT
 Lots 14-33, Block A

Street Paving Improvements
 Sta. 5+00 to Sta. 7+13.75

PROJECT NUMBER:
 472-2020-085618

DESIGN: DMV DRAWN: JAK
 DATE: 7/22/22

SHEET **9** OF **25**

File: E:\Projects\Turkey Creek 4th - Engineering\Phase 1B\ISTR 21-09-E015.DWG