

GENERAL NOTES:

- The Contractor shall comply with all applicable safety regulations. All construction shall be completed following current Standard Specifications and Special Provisions.
- Contractor will be required to provide notice to utility companies a minimum of seventy-two (72) hours prior to any excavation, as follows:
Kansas One-Call 687-2470
The Contractor must notify the following in case of an emergency:
AT&T 1-800-246-8464
Black Hills Energy 1-800-694-8989
City of Wichita Water & Sewer 1-316-219-8921
City of Wichita Stormwater 1-316-268-4090
City of Wichita Traffic 1-316-268-4034
Cox Communications 1-888-249-3530
Kansas Gas Service 1-888-482-4900
Evergy 1-800-544-4857
- Utility service lines, poles, etc. are to be adjusted as necessary by others prior to construction unless the plans specifically call for their adjustment by the Contractor or unless the plans specifically identify a utility to be adjusted by its owner during construction. Existing utilities and their location, as shown on the plans, represent the best information obtainable for design. The Contractor will be required to work around existing utilities within the right-of-way which do not conflict with proposed construction.
- Rubble from the removal of miscellaneous structures and excess excavation which is to be wasted shall be disposed of on sites to be provided by the Contractor. These sites shall be approved by the Engineer as to suitability, appearance and site location. Locations, in the opinion of the Engineer, that will leave an unsightly appearance will not be approved. All disposal sites must be approved by the Kansas Department of Health and Environment. Material either stockpiled or disposed of in a flood plain will require a Kansas State Board of Agriculture permit. Any material dumped in waters of the United States or wetlands is subject to U.S. Corps. of Engineers permitting regulations. Any material buried or stockpiled beyond approved construction limits will require additional archaeological investigations unless buried in a previously approved borrow location.
- Trees and shrubs in public right-of-way which are in direct conflict with proposed new construction shall be removed by the Contractor with the City Engineer's approval. Trees and shrubs which are not in direct conflict with proposed new construction shall be saved and protected from damage.
- The Contractor shall give all property owners and/or tenants of developed property abutting the construction of this project a minimum of ten (10) days notice prior to start of construction.
- The Contractor shall be responsible for preserving property irons. The Contractor will be required to re-establish any property irons which are damaged or destroyed by his construction operations. Such irons shall be re-established by a licensed land surveyor in accordance with state laws.
- All elevations shown are NAVD88.
- The Contractor shall protect from damage and support existing utilities through construction as approved by the utility owner and the Engineer at the contractor's expense.
- All areas disturbed by construction in Trinity Point Addition shall be seeded and mulched as follows:
Seed -- Kansas Premium Fescue Blend; 8 lbs. PLS/1000 Sq. Ft.
Annual Rye grass; 3 lbs./1000 Sq. Ft.
Fertilizer -- 12-24-12 Ratio; 45 lbs./Ac.
Mulch -- 2 Tons Prairie Hay/Ac.
All other disturbed areas are to be seeded as follows:
Seed -- Rye grass; 5 lbs./1000 Sq. Ft.
All costs associated with seeding including mobilization, preparation of ground, seeding, fertilizing, mulching, etc. shall be included in the L.S. bid item "Seeding".
An additional bid item for "Seeding, Temporary" has been included and may be used at the discretion of the design engineer. Temporary seed shall be Annual Rye at 5 lbs./1000 Sq. Ft. unless otherwise noted and shall be planted when permanent seed or sod cannot be used due to seasonal limitations. If the "Seeding, Temporary" bid item is not used, 100% of the pay item will be deducted from the contract. All costs associated with temporary seeding including mobilization, preparation of ground, seeding, etc., shall be included in the L.S. bid item "Seeding, Temporary".

- Except when required for safety, traffic control shall not block any lanes or sidewalks when work is not being performed.
- A saw cut of at least one-half the depth of existing surface courses or one-fourth the depth of the existing total pavement thickness shall be provided at locations where proposed construction abuts the existing surface course or pavement for which partial removal of that surface or pavement is required. Sawed joint to facilitate removal within three (3) feet of existing joints will not be permitted and for such instances the limits of removal shall extend to the existing joint. Such saw cuts will not be paid for directly and this cost shall be considered as subsidiary to the removal of the surface or pavement.
- All existing and proposed erosion control measures including silt fencing, erosion control mat, straw bales, inlet barriers, and const. entrance shall be maintained throughout construction by the contractor and until project is accepted by the City of WICHITA. The on-site engineer shall complete weekly reports on the status of erosion control measures. The contractor shall be required to comply with maintenance and/or replacement of erosion control measures as determined by the on-site engineer until project is accepted by City of WICHITA.

DEVELOPER:
Michael Brand
Brand Investments, LLC
2418 S. Hoover Rd
Wichita, KS 67215
(316)945-3527

Benchmarks

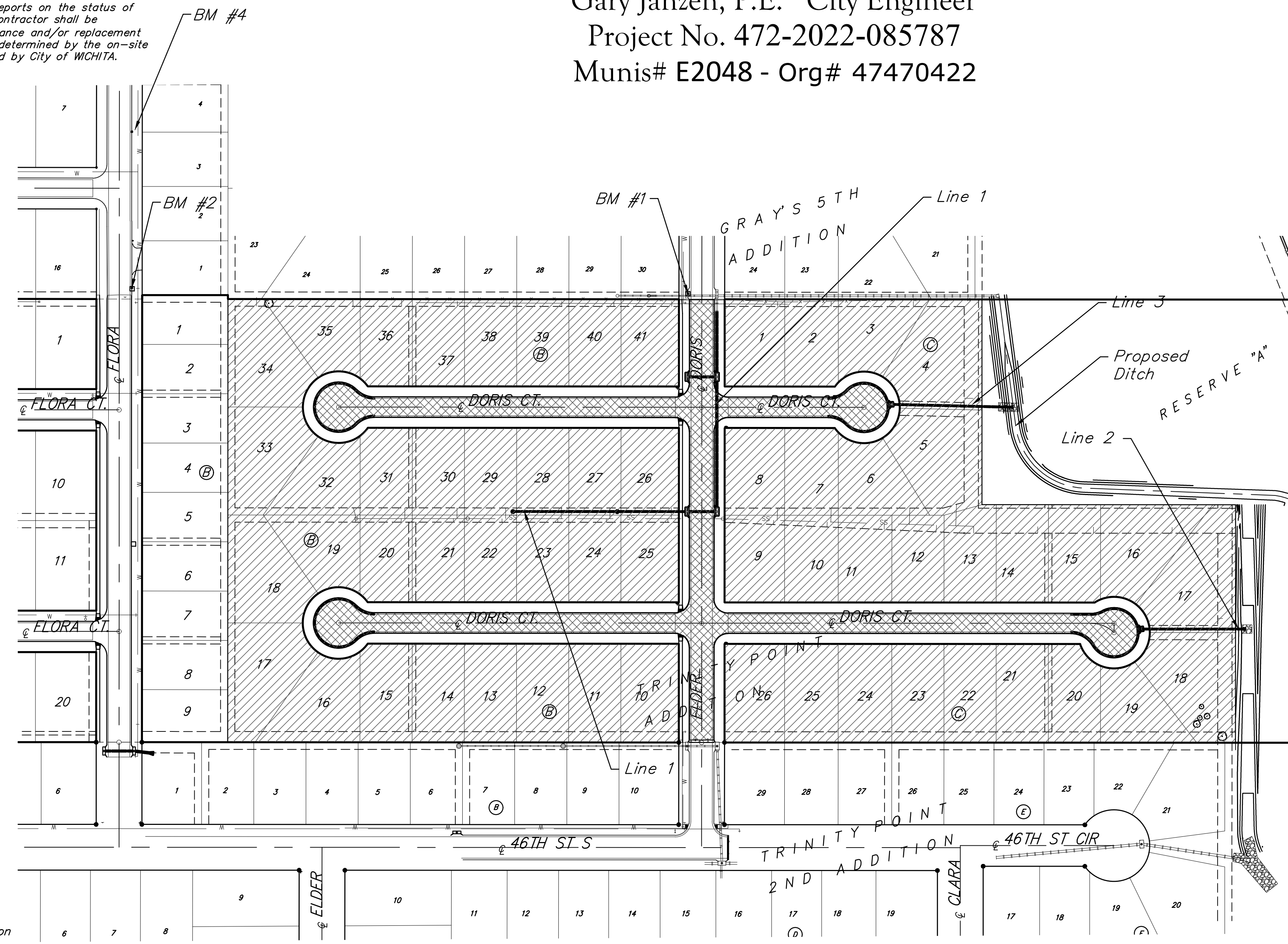
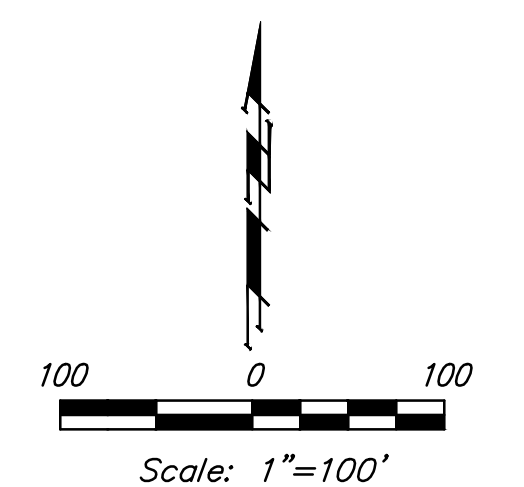
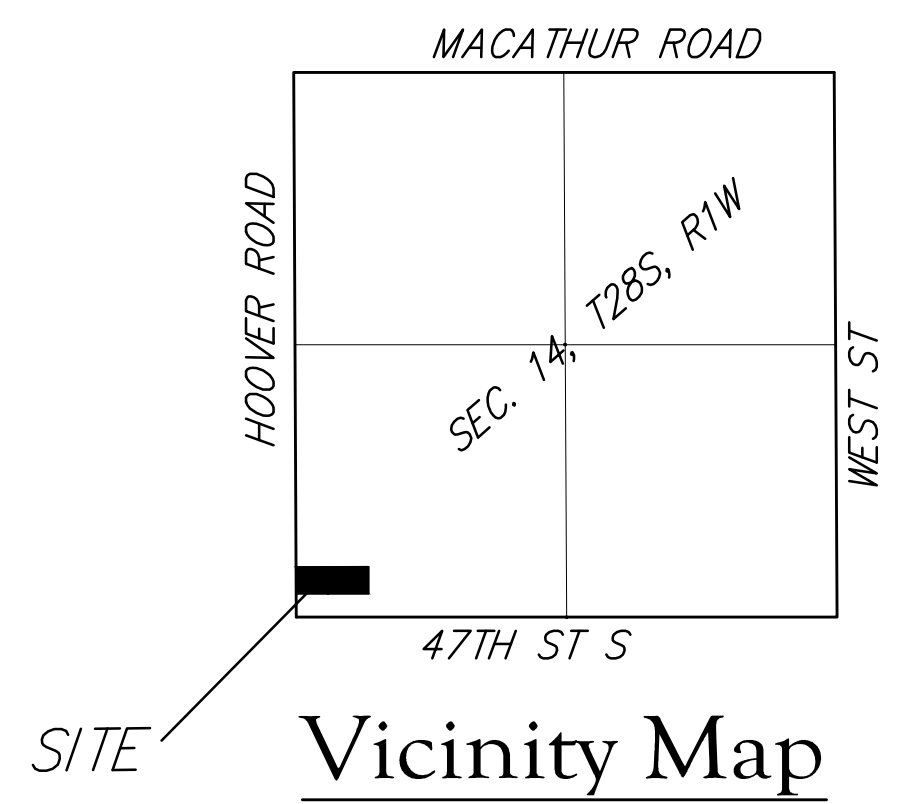
BM #1: "□" Cut in face of curb inlet near SE corner of Lot 30, Block C, Gray's 5th Add. Elev. = 1297.86 NAVD88
BM #2: "□" Cut in top of curb on east side of Flora, ±10' north of south property line of Gray's 5th Add. Elev. = 1302.40 NAVD88
BM #4: "□" Cut in top of curb on east side of Flora, adjacent to common lot line of Lots 3&4, Block C, Gray's 5th Add. Elev. = 1305.32 NAVD88

STREET PAVING WITH INCIDENTAL SWS IMPROVEMENTS to serve

TRINITY POINT ADDITION PHASE II

Lots 10 through 41 Block B; Lots 1 through 26, Block C
CITY OF WICHITA, KANSAS

Gary Janzen, P.E. City Engineer
Project No. 472-2022-085787
Munis# E2048 - Org# 47470422



Benefit District	[Hatched Pattern]
Proposed Streets	[Cross-hatched Pattern]
Sheet Index	

Title Sheet	1
DORIS	2-3
DORIS CT (Lots 10-25, Block B)	3-4
DORIS CT (Lots 9-26, Block C)	4-5
DORIS CT (Lots 26-41, Block B)	5-6
DORIS CT (Lots 1-8, Block C)	6-7
SWS Line 1	8
SWS Line 1A	9
SWS Line 2 & 3	10
Mass Grading/Erosion Control Plan	11
Ditch Grading Plan	12
Asphalt Paving Detail	13
Curb & Gutter Details	14
Sign Detail	15
Wheelchair Ramp Detail	16
Valley Gutter Detail	17
Miscellaneous Detail	18
Type 1A Curb Inlet	19
Backyard Inlet	20
Pavement Underdrain Detail	21
Mass Grading Detail	22
Erosion Control BMP Details	23-27
Street X-Sections	28-41
Coordinate Sheet	42
Copy of Trinity Point Plat	43
Copy of Trinity Point 2nd Plat	44
Copy of Gray's 5th Plat	45

Stormwater Certification:	
New Development or Redevelopment	
Stormwater Permit #	
NOI Permit #	S-AR94-1728 KSR120169
These construction plans were prepared in accordance with the current Stormwater management Regulations as set forth in the City of Wichita's Stormwater Management Ordinance 16.32 and the policies/guidelines presented in the Wichita/Sedgwick County Stormwater Manual.	
Site Area (Acres) =	23.3 ac.
Disturbed Area (Acres) =	23.3 ac.
Water Quality Treatment:	Wet Ponds-Offsite
Downstream Channel Protection:	Wet Ponds-Offsite
Detention:	Wet Ponds
The BMP used for this development is Wet Ponds-Offsite	

Project Earthwork Totals			
	Excavation	Loose Fill	Comp. Fill
Subtotal	9,828 C.Y.	1,493 C.Y.	26,128 C.Y.
TOTAL		Excavation, Borrow	
		17,793 C.Y.	
Total Project Length			
2,444 L.F. = 0.46 Miles			



July 2022

Baughman Company, P.A. 315 Ellis St. Wichita, KS 67211 P 316-262-7271 F 316-262-0143
ENGINEERING | SURVEYING | PLANNING | LANDSCAPE ARCHITECTURE