

BENCHMARKS:
 BM #1: "□" Cut in face of curb inlet near SE corner of Lot 30, Block C, Gray's 5th Add. Elev. = 1297.86 NAVD88
 BM #2: "□" Cut in top of curb on east side of Flora, ±10' north of south property line of Gray's 5th Add. Elev. = 1302.40 NAVD88
 BM #4: "□" Cut in top of curb on east side of Flora, adjacent to common lot line of Lots 3&4, Block C, Gray's 5th Add. Elev. = 1305.32 NAVD88

Baseline = ϕ Doris

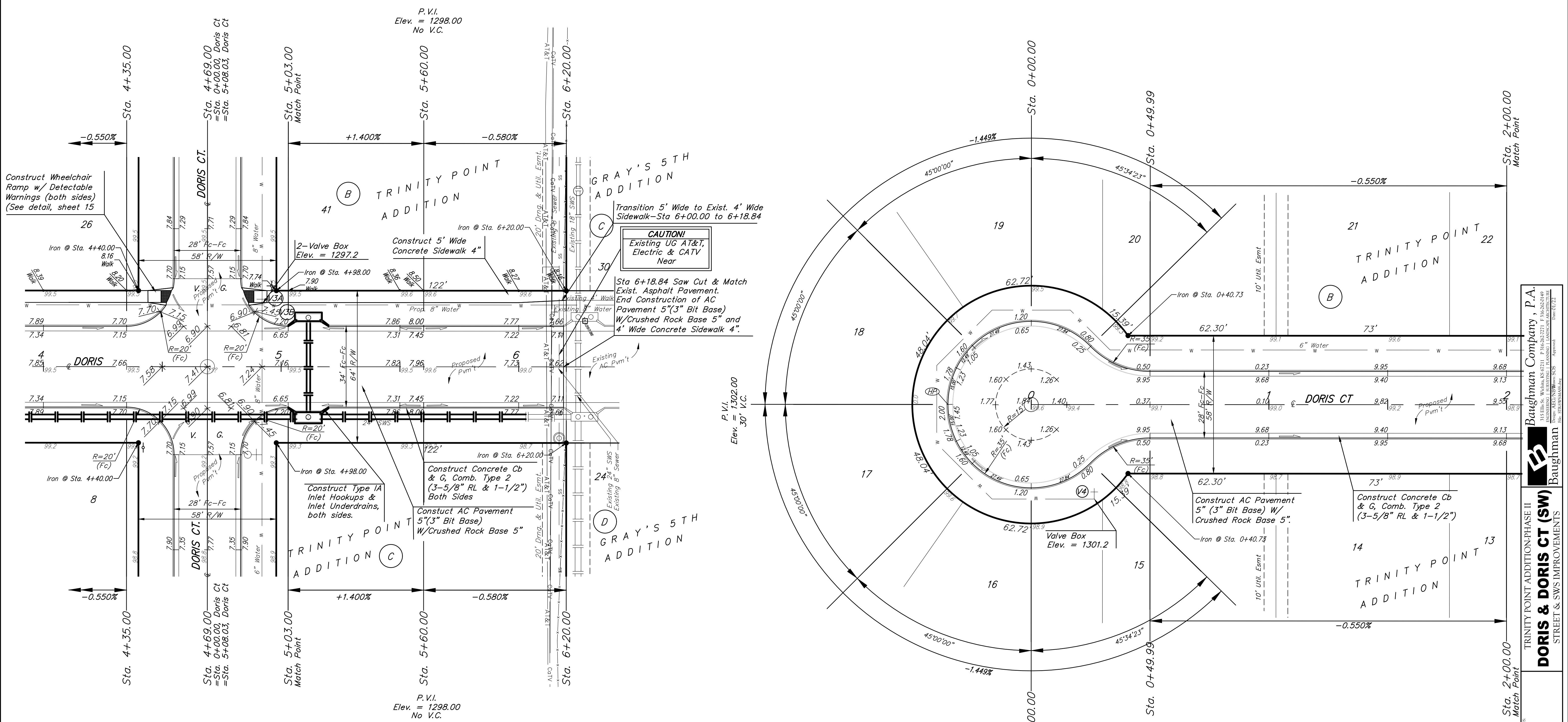
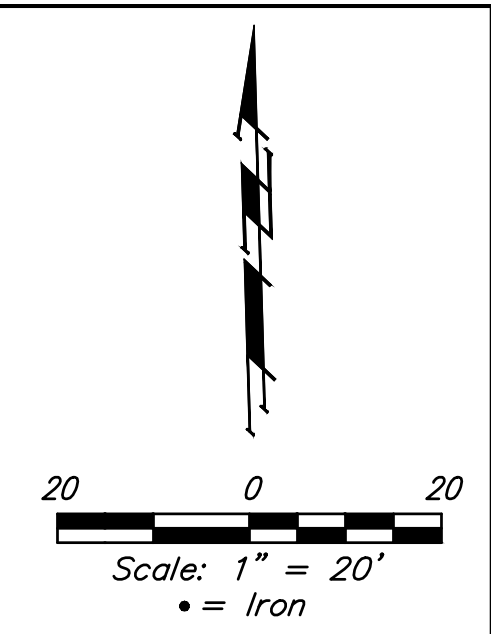
WATER VALVE LOCATION TABLE

VALVE NUMBER	STREET	BASELINE STATION	OFFSET DISTANCE	OFFSET DIRECTION
V4	Doris Ct	0+26.5	39.73'	Rt.

Baseline = ϕ Doris Ct.

NOTE: ROLL TYPE CURB & GUTTER TO BE CONSTRUCTED ON THE PAVEMENT SHOWN ON THIS SHEET. TOP OF CURB ELEVATIONS ARE GIVEN FOR FULL HEIGHT CURB (0.25' DIFFERENCE).

Paving contractor will be responsible to operate all water valves on the project, in the presence of the inspector, to ensure accessibility to the valves, and that all valves (except blowoffs) are left in the "ON" position when the project is completed.



TRINITY POINT ADDITION-PHASE II
DORIS & DORIS CT (SW)
 STREET & SWS IMPROVEMENTS
 Baughman Company, P.A.
 ENGINEERING, SURVEYING, PLANNING & LANDSCAPE ARCHITECTURE
 1000 W. FLORIDA AVE., SUITE 200, TAMPA, FL 33604
 TEL: 813.288.8888 FAX: 813.288.8889
 www.baughman.com
 Date: 07/22/11