

J:\PROJECTS\2019\10\10338\_ESTANCIA\_SECOND\_18338\_CAD\SHS\06\_CIVIL\PAV\PH2\18338-05-6500.DWG  
 PLOTTED: Monday, August 01, 2022 @ 10:32AM

### CONTROL POINTS

DATUM:  
 THE HORIZONTAL DATUM IS BASED ON THE KANSAS COORDINATE SYSTEM OF 1983(2011), SOUTH ZONE. COORDINATES SHOWN HAVE BEEN MODIFIED TO THE GROUND USING A COMBINED ADJUSTMENT FACTOR OF 1.0001200144. STATE PLANE COORDINATES CAN BE CALCULATED BY MULTIPLYING THE SHOWN VALUES BY 0.99988.

ALL ELEVATIONS SHOWN ARE BASED ON THE NAVD 88 VERTICAL DATUM.

BENCHMARKS AND CONTROL POINTS  
 ALL BENCHMARKS CAN BE USED AS CONTROL POINTS

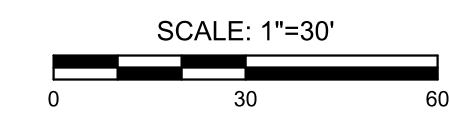
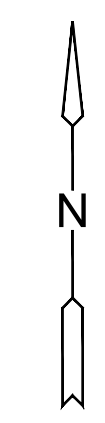
CP#50 5/8" REBAR WITH MKEC ALUMINUM CAP, 1300 FEET EAST OF RIDGE RD, ON THE SOUTH SIDE OF VILLAGE CIR., 80 FEET WEST OF CONCRETE ENTRANCE DRIVE TO FARM HOUSE, 15 FEET SOUTH OF SIDEWALK  
 NORTHING = 1711490.124 EASTING = 1624127.580  
 ELEV. = 1335.95' NAVD 88

CP#51 5/8" REBAR WITH MKEC ALUMINUM CAP AT NORTHEAST PORTION OF SITE, 13 FEET WEST OF WEST EDGE OF TREE ROW AND 285 FEET NORTH OF NORTH EDGE OF TREE ROW, NORTH OF PLATTED LOT 34, BLOCK 1, ESTANCIA ADDITION.  
 NORTHING = 1711268.791 EASTING = 1625517.702  
 ELEV. = 1337.04' NAVD 88

CP#56 5/8" REBAR WITH MKEC ALUMINUM CAP, AT NORTHWEST SIDE OF LOT 72, BLOCK 3, ESTANCIA ADDITION, 6 FEET SOUTHEAST OF TOP OF BANK FOR POND.  
 NORTHING = 1710879.252 EASTING = 1623983.524  
 ELEV. 1333.39' NAVD 88

BM#58 PKN AND WASHER DRILLED INTO NORTHEAST CORNER OF CURB INLET, EAST SIDE OF ESTANCIA ST., 70 FEET NORTH OF COLLINA ST.  
 NORTHING = 1710768.55 EASTING = 1624579.04  
 ELEV. 1333.63' NAVD 88

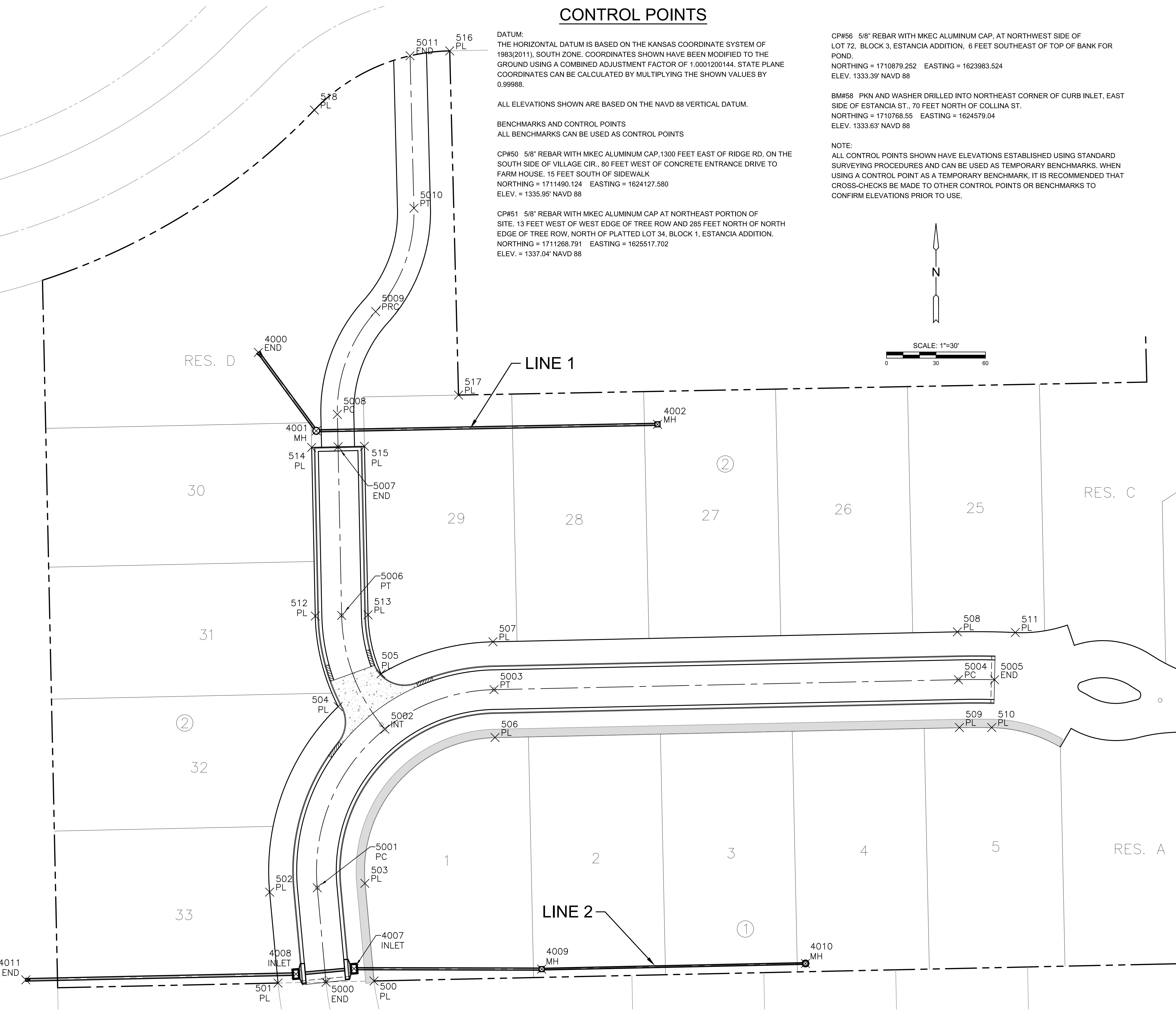
NOTE:  
 ALL CONTROL POINTS SHOWN HAVE ELEVATIONS ESTABLISHED USING STANDARD SURVEYING PROCEDURES AND CAN BE USED AS TEMPORARY BENCHMARKS. WHEN USING A CONTROL POINT AS A TEMPORARY BENCHMARK, IT IS RECOMMENDED THAT CROSS-CHECKS BE MADE TO OTHER CONTROL POINTS OR BENCHMARKS TO CONFIRM ELEVATIONS PRIOR TO USE.



PLAT POINTS			
Point #	Northing	Easting	Desc.
500	1710995.89	1624174.36	PL
501	1710994.65	1624116.16	PL
502	1711049.75	1624111.08	PL
503	1711055.08	1624168.84	PL
504	1711162.24	1624152.66	PL
505	1711182.10	1624178.64	PL
506	1711143.50	1624247.76	PL
507	1711201.49	1624246.52	PL
508	1711207.52	1624528.11	PL
509	1711149.54	1624529.36	PL
510	1711149.55	1624548.96	PL
511	1711207.11	1624563.27	PL
512	1711217.13	1624138.76	PL
513	1711217.82	1624170.75	PL
514	1711319.32	1624136.57	PL
515	1711320.01	1624168.56	PL
516	1711559.69	1624220.29	PL
517	1711351.05	1624225.63	PL
518	1711523.83	1624138.18	PL

PAVING POINTS			
Point #	Northing	Easting	Desc.
5000	1710995.10	1624145.28	END
5001	1711052.41	1624139.96	PC
5002	1711148.55	1624180.95	INT
5003	1711172.49	1624247.14	PT
5004	1711178.53	1624528.73	PC
5005	1711178.52	1624550.67	END
5006	1711217.47	1624154.76	PT
5007	1711319.66	1624152.57	END
5008	1711339.36	1624152.15	PC
5009	1711401.66	1624175.38	PRC
5010	1711464.34	1624198.60	PT
5011	1711556.73	1624196.24	END

STORM WATER SEWER POINTS			
Point #	Northing	Easting	Desc.
4000	1711376.91	1624104.28	END
4001	1711329.38	1624139.36	MH
4002	1711333.32	1624346.29	MH
4007	1711003.34	1624162.23	INLET
4008	1711000.09	1624127.05	INLET
4009	1711003.08	1624276.05	MH
4010	1711006.50	1624436.01	MH
4011	1710996.58	1623963.26	END



EVERY ATTEMPT HAS BEEN MADE TO INSURE ALL COORDINATE VALUES SHOWN ARE AN ACCURATE AND TRUE REPRESENTATION OF THE CURRENT PLANS. ALL VALUES ARE TO BE CONFIRMED WITH THE FINAL SIGNED PLAN SET BEFORE USE.



PAVING AND INCIDENTAL DRAINAGE PLANS FOR  
**ESTANCIA 2ND ADDITION**  
 PHASE 2

©2022  
 MKEC Engineering  
 All Rights Reserved  
 www.mkec.com  
 These drawings and their contents, including, but not limited to, all concepts, designs, & ideas are the exclusive property of MKEC Engineering (MKEC), and may not be used or reproduced in any way without the express consent of MKEC.

#### BUBBLE MAP

PROJECT NO.	472-2019-085561	
DATE	07/28/2022	
SCALE	1"=20'	
DESIGNED	DRAWN	CHECKED
DFL	CJL	SPE
NO.	REVISION	DATE