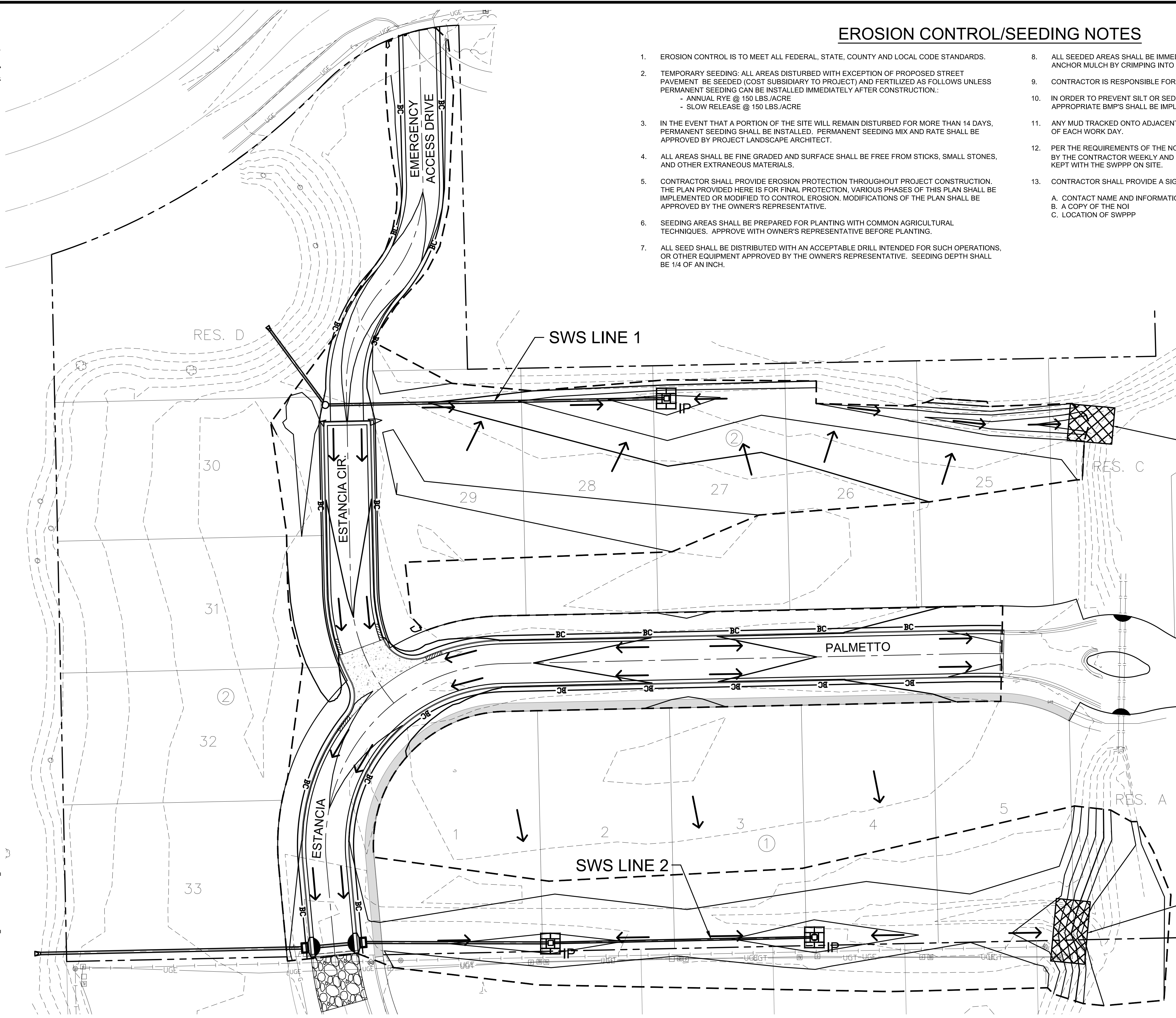


J:\PROJECTS\2019\19010102388_ESTANCIA_SECOND_18338_CAD\SHS\05 CIVIL\PAV\PH2\18338-05-6000.DWG
 PLOTTED: Monday, August 01, 2022 @ 12:35PM

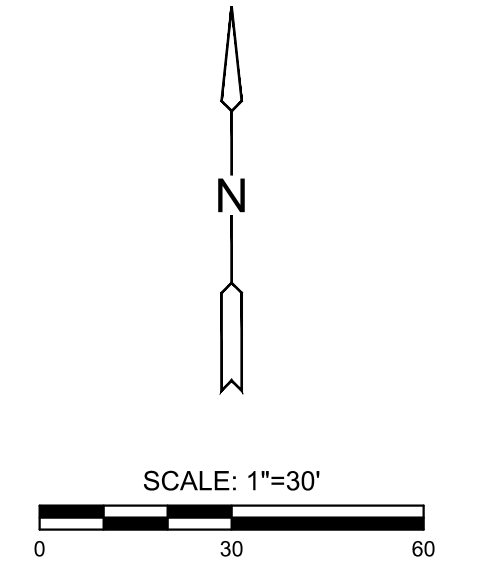
EROSION CONTROL/SEEDING NOTES

1. EROSION CONTROL IS TO MEET ALL FEDERAL, STATE, COUNTY AND LOCAL CODE STANDARDS.
2. TEMPORARY SEEDING: ALL AREAS DISTURBED WITH EXCEPTION OF PROPOSED STREET PAVEMENT BE SEEDED (COST SUBSIDIARY TO PROJECT) AND FERTILIZED AS FOLLOWS UNLESS PERMANENT SEEDING CAN BE INSTALLED IMMEDIATELY AFTER CONSTRUCTION.:
 - ANNUAL RYE @ 150 LBS./ACRE
 - SLOW RELEASE @ 150 LBS./ACRE
3. IN THE EVENT THAT A PORTION OF THE SITE WILL REMAIN DISTURBED FOR MORE THAN 14 DAYS, PERMANENT SEEDING SHALL BE INSTALLED. PERMANENT SEEDING MIX AND RATE SHALL BE APPROVED BY PROJECT LANDSCAPE ARCHITECT.
4. ALL AREAS SHALL BE FINE GRADED AND SURFACE SHALL BE FREE FROM STICKS, SMALL STONES, AND OTHER EXTRANEOUS MATERIALS.
5. CONTRACTOR SHALL PROVIDE EROSION PROTECTION THROUGHOUT PROJECT CONSTRUCTION. THE PLAN PROVIDED HERE IS FOR FINAL PROTECTION. VARIOUS PHASES OF THIS PLAN SHALL BE IMPLEMENTED OR MODIFIED TO CONTROL EROSION. MODIFICATIONS OF THE PLAN SHALL BE APPROVED BY THE OWNER'S REPRESENTATIVE.
6. SEEDING AREAS SHALL BE PREPARED FOR PLANTING WITH COMMON AGRICULTURAL TECHNIQUES. APPROVE WITH OWNER'S REPRESENTATIVE BEFORE PLANTING.
7. ALL SEED SHALL BE DISTRIBUTED WITH AN ACCEPTABLE DRILL INTENDED FOR SUCH OPERATIONS, OR OTHER EQUIPMENT APPROVED BY THE OWNER'S REPRESENTATIVE. SEEDING DEPTH SHALL BE 1/4 OF AN INCH.
8. ALL SEEDED AREAS SHALL BE IMMEDIATELY MULCHED WITH PRAIRIE HAY AT 2 TONS/ACRE. ANCHOR MULCH BY CRIMPING INTO TOPSOIL WITH SUITABLE MECHANICAL EQUIPMENT.
9. CONTRACTOR IS RESPONSIBLE FOR MAINTAINING AND IMPLEMENTING ALL EROSION CONTROL..
10. IN ORDER TO PREVENT SILT OR SEDIMENT FROM ENTERING ADJACENT PROPERTIES, APPROPRIATE BMP'S SHALL BE IMPLEMENTED WITHIN THE PROJECT.
11. ANY MUD TRACKED ONTO ADJACENT PAVED AREAS OR STREETS SHALL BE REMOVED AT THE END OF EACH WORK DAY.
12. PER THE REQUIREMENTS OF THE NOI/SWPPP, BMP INSPECTION REPORTS SHALL BE COMPLETED BY THE CONTRACTOR WEEKLY AND WITHIN 24 HOURS AFTER A 1/2" RAIN. REPORTS SHALL BE KEPT WITH THE SWPPP ON SITE.
13. CONTRACTOR SHALL PROVIDE A SIGN NEAR THE ENTRANCE WITH THE FOLLOWING INFORMATION:
 - A. CONTACT NAME AND INFORMATION
 - B. A COPY OF THE NOI
 - C. LOCATION OF SWPPP



LEGEND

- XXXX--- EXISTING GRADES
- XXXX— PROPOSED GRADES
- BC— BACK OF CURB PROTECTION
- [Cross-hatch symbol] CONSTRUCTION ENTRANCE
- [Arrow symbol] FLOW PATH
- LIMITS OF GRADING
- [IP symbol] AREA INLET PROTECTION
- [Curb symbol] CURB INLET PROTECTION
- [Cross-hatch symbol] TURF MAT, NORTH AMERICAN GREEN SC150



EVERY ATTEMPT HAS BEEN MADE TO INSURE ALL COORDINATE VALUES SHOWN ARE AN ACCURATE AND TRUE REPRESENTATION OF THE CURRENT PLANS. ALL VALUES ARE TO BE CONFIRMED WITH THE FINAL SIGNED PLAN SET BEFORE USE.



PAVING AND INCIDENTAL DRAINAGE PLANS FOR
ESTANCIA 2ND ADDITION
 PHASE 2

©2022
 MKEC Engineering
 All Rights Reserved
 www.mkec.com
 These drawings and their contents, including, but not limited to, all concepts, designs, & ideas are the exclusive property of MKEC Engineering (MKEC), and may not be used or reproduced in any way without the express consent of MKEC.

EROSION CONTROL PLAN

PROJECT NO.	472-2019-085561	
DATE	07/28/2022	
SCALE	1"=20'	
DESIGNED	DRAWN	CHECKED
DFL	CJL	SPE

NO.	REVISION	DATE

SHEET NO.
18 OF 29