

# GENERAL NOTES:

- The Contractor shall comply with all applicable safety regulations. All construction shall be completed following current Standard Specifications and Special Provisions.
- Contractor will be required to provide notice to utility companies a minimum of seventy-two (72) hours prior to any excavation, as follows:

Kansas One-Call 687-2470

The Contractor must notify the following in case of an emergency:

AT&T 1-800-246-8464  
 Black Hills Energy 1-800-694-8989  
 City of Wichita Water & Sewer 1-316-219-8921  
 City of Wichita Stormwater 1-316-268-4090  
 City of Wichita Traffic 1-316-268-4034  
 Cox Communications 1-888-249-3530  
 Kansas Gas Service 1-888-482-4950  
 Evergy 1-800-544-4857

- Utility service lines, poles, etc. are to be adjusted as necessary by others prior to construction unless the plans specifically call for their adjustment by the Contractor or unless the plans specifically identify a utility to be adjusted by its owner during construction. Existing utilities and their location, as shown on the plans, represent the best information obtainable for design. The Contractor will be required to work around existing utilities within the right-of-way which do not conflict with proposed construction.
- Rubble from the removal of miscellaneous structures and excess excavation which is to be wasted shall be disposed of on sites to be provided by the Contractor. These sites shall be approved by the Engineer as to suitability, appearance and site location. Locations, in the opinion of the Engineer, that will leave an unsightly appearance will not be approved. All disposal sites must be approved by the Kansas Department of Health and Environment. Material either stockpiled or disposed of in a flood plain will require a Kansas State Board of Agriculture permit. Any material dumped in waters of the United States or wetlands is subject to U.S. Corps. of Engineers permitting regulations. Any material buried or stockpiled beyond approved construction limits will require additional archaeological investigations unless buried in a previously approved borrow location.
- Trees and shrubs in public right-of-way which are in direct conflict with proposed new construction shall be removed by the Contractor with the City Engineer's approval. Trees and shrubs which are not in direct conflict with proposed new construction shall be saved and protected from damage.
- The Contractor shall give all property owners and/or tenants of developed property abutting the construction of this project a minimum of ten (10) days notice prior to start of construction.
- The Contractor shall be responsible for preserving property irons. The Contractor will be required to re-establish any property irons which are damaged or destroyed by his construction operations. Such irons shall be re-established by a licensed land surveyor in accordance with state laws.
- All elevations shown are NAVD88.
- The Contractor shall protect from damage and support existing utilities through construction as approved by the utility owner and the Engineer at the contractor's expense.
- All areas disturbed by construction in Towne Parc 8th Addition shall be seeded and mulched as follows:

Seed -- Kansas Premium Fescue Blend; 8 lbs. PLS/1000 Sq. Ft.  
 Annual Rye grass; 3 lbs./1000 Sq. Ft.  
 Fertilizer -- 12-24-12 Ratio; 45 Lbs./Ac.  
 Mulch -- 2 Tons Prairie Hay/Ac.

All other disturbed areas are to be seeded as follows:

Seed -- Rye grass; 5 lbs./1000 Sq. Ft.

All costs associated with seeding including mobilization, preparation of ground, seeding, fertilizing, mulching, etc. shall be included in the L.S. bid item "Seeding".

An additional bid item for "Seeding, Temporary" has been included and may be used at the discretion of the design engineer. Temporary seed shall be Annual Rye at 5 lbs./1000 Sq. Ft. unless otherwise noted and shall be planted when permanent seed or sod cannot be used due to seasonal limitations. If the "Seeding, Temporary" bid item is not used, 100% of the pay item will be deducted from the contract. All costs associated with temporary seeding including mobilization, preparation of ground, seeding, etc., shall be included in the L.S. bid item "Seeding, Temporary".

- Except when required for safety, traffic control shall not block any lanes or sidewalks when work is not being performed.
- A saw cut of at least one-half the depth of existing surface courses or one-fourth the depth of the existing total pavement thickness shall be provided at locations where proposed construction abuts the existing surface course or pavement for which partial removal of that surface or pavement is required. Sawed joint to facilitate removal within three (3) feet of existing joints will not be permitted and for such instances the limits of removal shall extend to the existing joint. Such saw cuts will not be paid for directly and this cost shall be considered as subsidiary to the removal of the surface or pavement.
- All existing and proposed erosion control measures including silt fencing, erosion control mat, straw bales, inlet barriers, and const. entrance shall be maintained throughout construction by the contractor and until project is accepted by the City of WICHITA. The on-site engineer shall complete weekly reports on the status of erosion control measures. The contractor shall be required to comply with maintenance and/or replacement of erosion control measures as determined by the on-site engineer until project is accepted by City of WICHITA.

### DEVELOPER:

Louis J. Robelli, Managing Member  
 Murdock Properties, LLC  
 5929 S. Clifton  
 Derby, KS 67037  
 (316)650-7536

### Benchmarks

BM #1: "+" Cut on N. San. Sewer  
 MH rim approx. 3' S. & 3' W of  
 Lot 2, Block C, Towne Parc 8th  
 Add.  
 Elev. = 1399.12 NAVD88

BM #2: "+" Cut on N. San. Sewer  
 MH rim approx. 21.1' S. & 3' W of  
 Lot 8, Block C, Towne Parc 8th  
 Add.  
 Elev. = 1393.99 NAVD88

BM #3: "□" Cut on top of curb  
 16.7' N. of NE corner Lot 7, Block  
 2, Turtle Run 3rd Add.  
 Elev. = 1390.32 NAVD88

BM #4: "+" Cut on E. top of curb  
 Adjacent to Lots 6 & 7, Block A,  
 Towne Parc 4th Add.  
 Elev. = 1397.86 NAVD88

# STREET PAVING WITH INCIDENTAL SWS IMPROVEMENTS to serve **TOWNE PARC 8TH ADDITION**

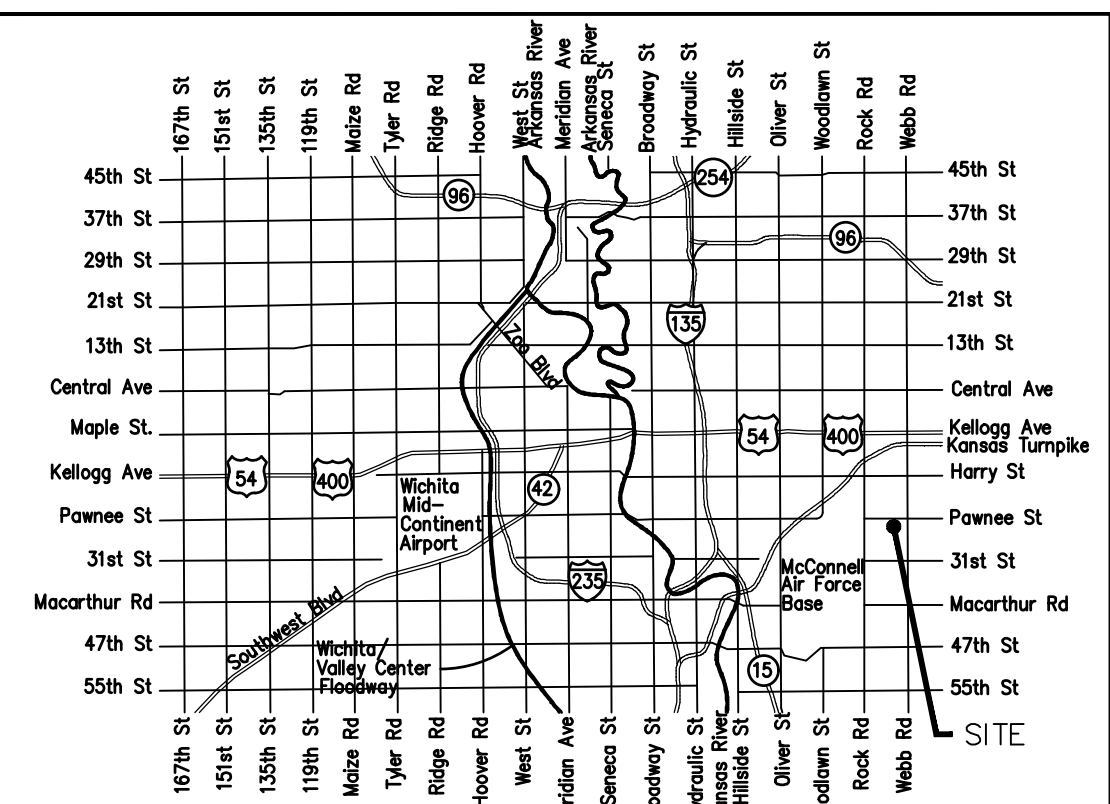
Lots 1-9, Block A; Lots 1-17, Block B; Lots 1-13, Block C; Lots 1-3, Block D

## CITY OF WICHITA, KANSAS

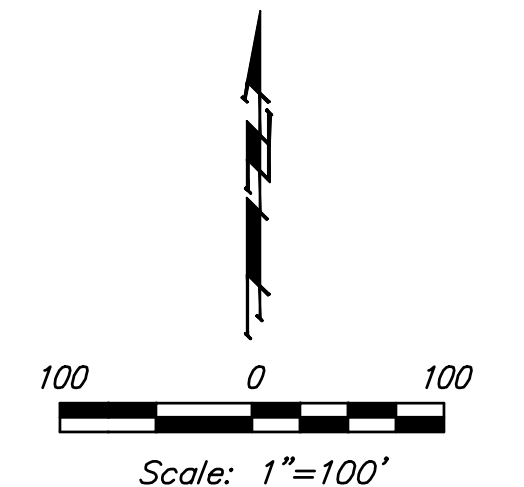
Gary Janzen, P.E. City Engineer

Project No. 472-2022-085765

Munis# E2033 - Org# 47469922

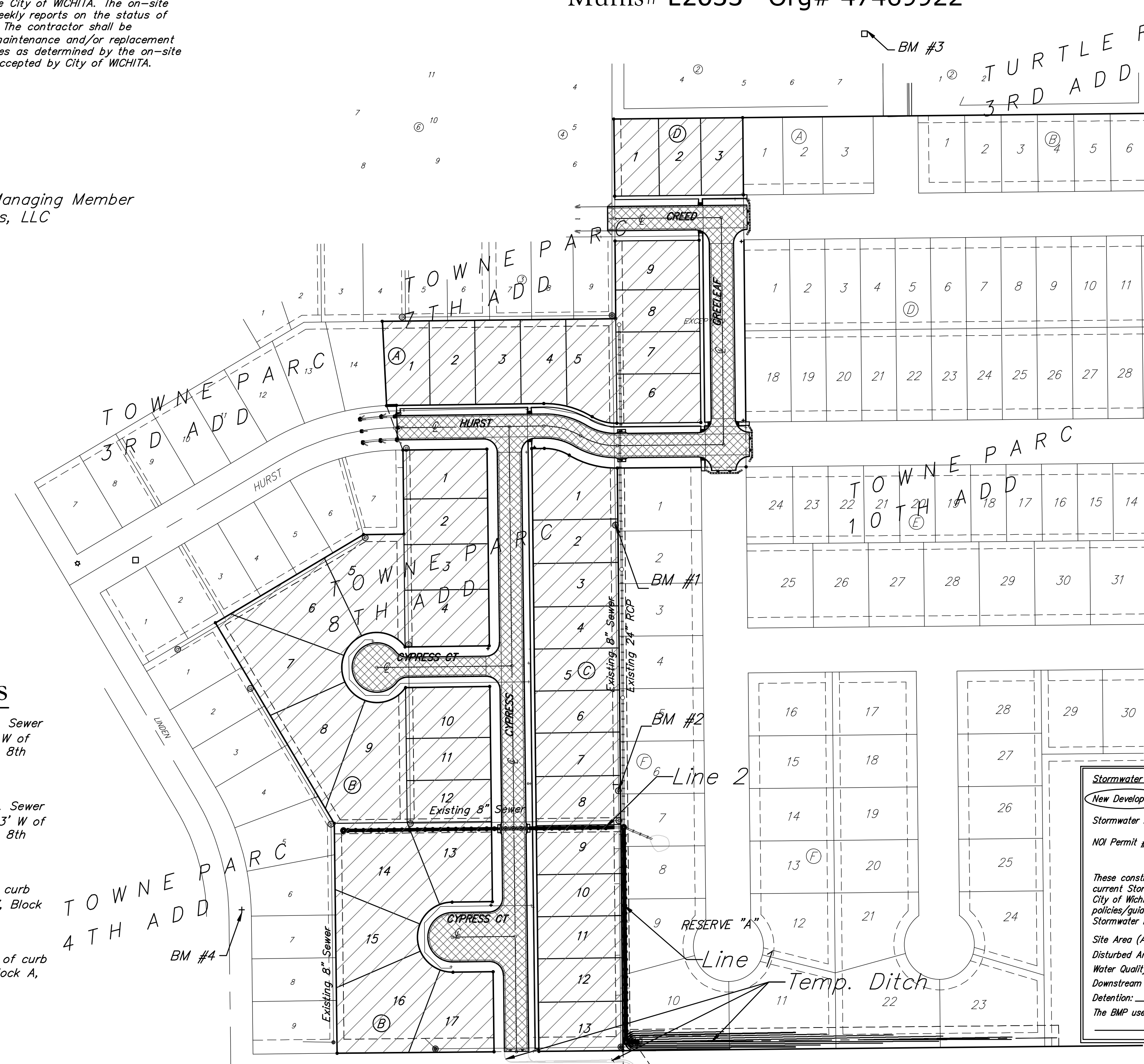


### Vicinity Map



### Sheet Index

Title Sheet	1
CREED	2
GREENLEAF	3
HURST	4
CYPRESS	5-6
CYPRESS CT (Lots 10-25, Block B)	7
CYPRESS CT (Lots 9-26, Block C)	8
Temporary Ditch	9
SWS Line 1	10
SWS Line 2	11
Erosion Control Plan	12
Asphalt Paving Detail	13
Curb & Gutter Details	14
Sign Detail	15
Miscellaneous Detail	16
Type 1A Curb Inlet	17
Storm Sewer MH Detail	18
Pavement Underdrain Detail	19
Valley Gutter Detail	20
Wheel Chair Ramp Detail	21
Erosion Control BMP Details	22-26
Street X-Sections	27-35
Coordinate Sheet	36
Copy of Towne Parc 8th Plat	37



**Stormwater Certification:**  
 New Development or Redevelopment  
 Stormwater Permit # \_\_\_\_\_  
 NOI Permit # S-AR94-0381 KSR103228

These construction plans were prepared in accordance with the current Stormwater management Regulations as set forth in the City of Wichita's Stormwater Management Ordinance 16.32 and the policies/guidelines presented in the Wichita/Sedgwick County Stormwater Manual.

Site Area (Acres) = 11.5 ac.  
 Disturbed Area (Acres) = 11.5 ac.  
 Water Quality Treatment: Wet Ponds-Offsite  
 Downstream Channel Protection: Wet Ponds-Offsite  
 Detention: Wet Ponds  
 The BMP used for this development is Wet Ponds-Offsite

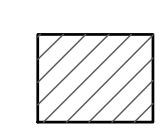


**Project Earthwork Totals**

	C.Y. Excavation	C.Y. Fill
Streets	5,021	844
Ditch	669	0
<b>Total</b>	<b>5,690</b>	<b>844</b>

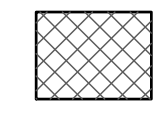
**Total Project Length**  
 2,309 L.F. = 0.44 Miles

Benefit District



UNPLATTED

Proposed Streets



Baughman Company, P.A. 315 Ellis St. Wichita, KS 67211 P 316-262-7271 F 316-262-0143  
 ENGINEERING | SURVEYING | PLANNING | LANDSCAPE ARCHITECTURE