

BENCHMARKS:

BM #1: "+ Cut on N. San. Sewer MH rim approx. 3' S. & 3' W of Lot 2, Block C, Towne Parc 8th Add. Elev. = 1399.12 NAVD88

BM #2: "+ Cut on N. San. Sewer MH rim approx. 21.1' S. & 3' W of Lot 8, Block C, Towne Parc 8th Add. Elev. = 1393.99 NAVD88

BM #3: "+ Cut on top of curb 16.7' N. of NE corner Lot 7, Block 2, Turtle Run 3rd Add. Elev. = 1390.32 NAVD88

BM #4: "+ Cut on E. top of curb Adjacent to Lots 6 & 7, Block A, Towne Parc 4th Add. Elev. = 1397.86 NAVD88

Exist. Sanitary Sewer MH
Top Elev. = 1393.3
Elev. (N) = 1375.34
Elev. (W) = 1384.79
Elev. (E) = 1374.55

Remove trees only as necessary for Construction

Install 20 S.Y. Light Stone Rip-Rap

40' Drng. Esmt. Film 1228, Pg. 0627

Sta. 0+10.0, Line 1
MH, Standard SWS (5')
W/Grated Lid
Top Elev. = 1391.6
N=1,670,269.60 E=1,679,817.52

Sta. 0+00.0, Line 1
Pipe, End Section 30"
Elev. = 1389.8
N=1,670,269.79 E=1,679,827.54

4" Sewer Vertical Riser

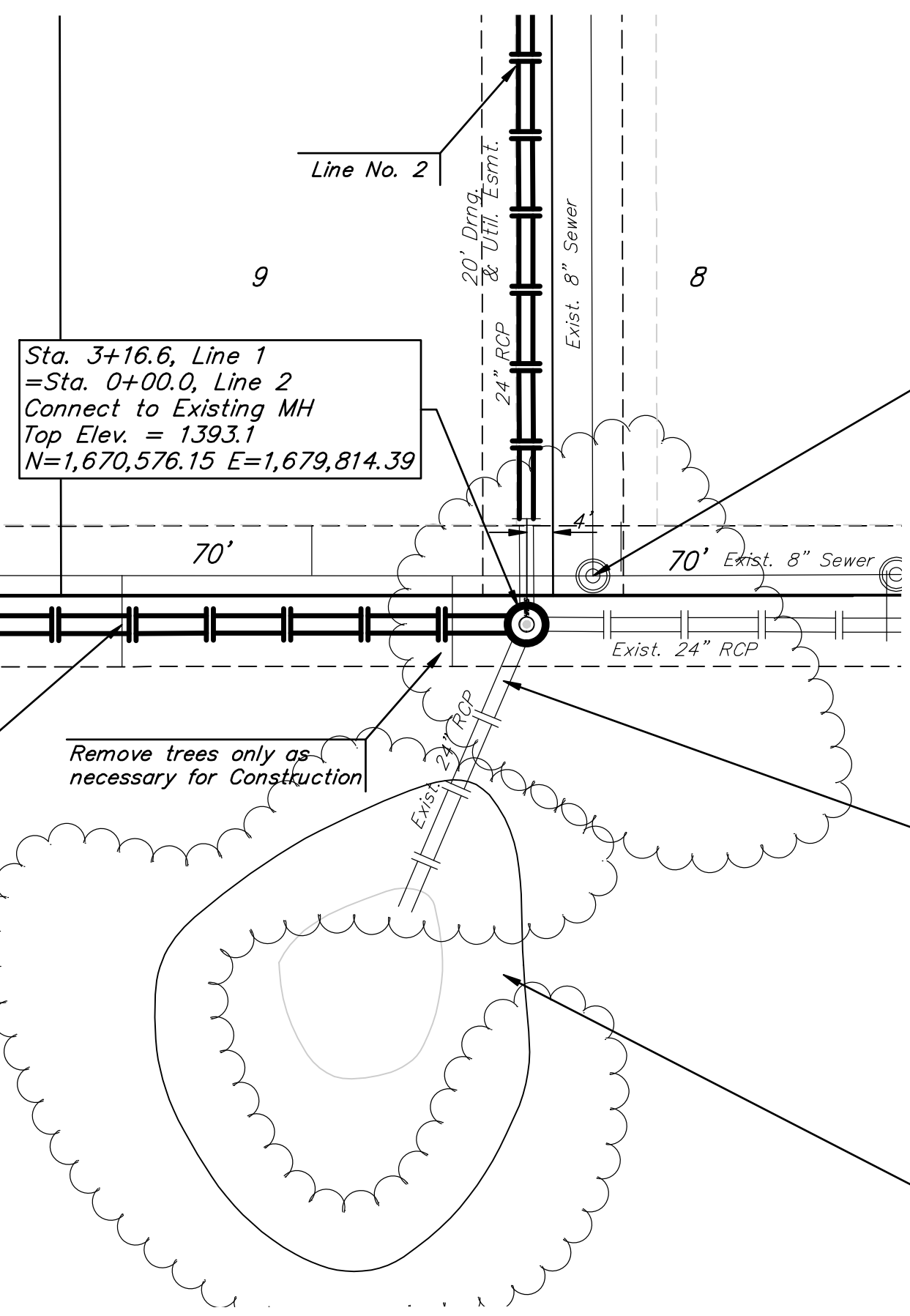
TOWNE PARC 10TH
ADDITION

4" Sewer Vertical Riser

Remove trees only as necessary for Construction

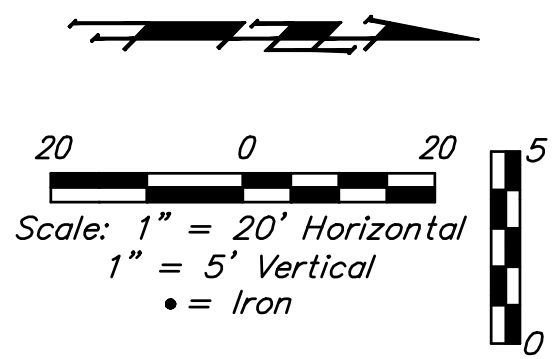
Remove Exist. 42.5 L.F. 24" RCP w/ headwall. Plug opening of Existing MH (SE)
See Detail This Sheet

Fill existing outfall location to Elev. 1394.0
Incidental to "Site Restoration"

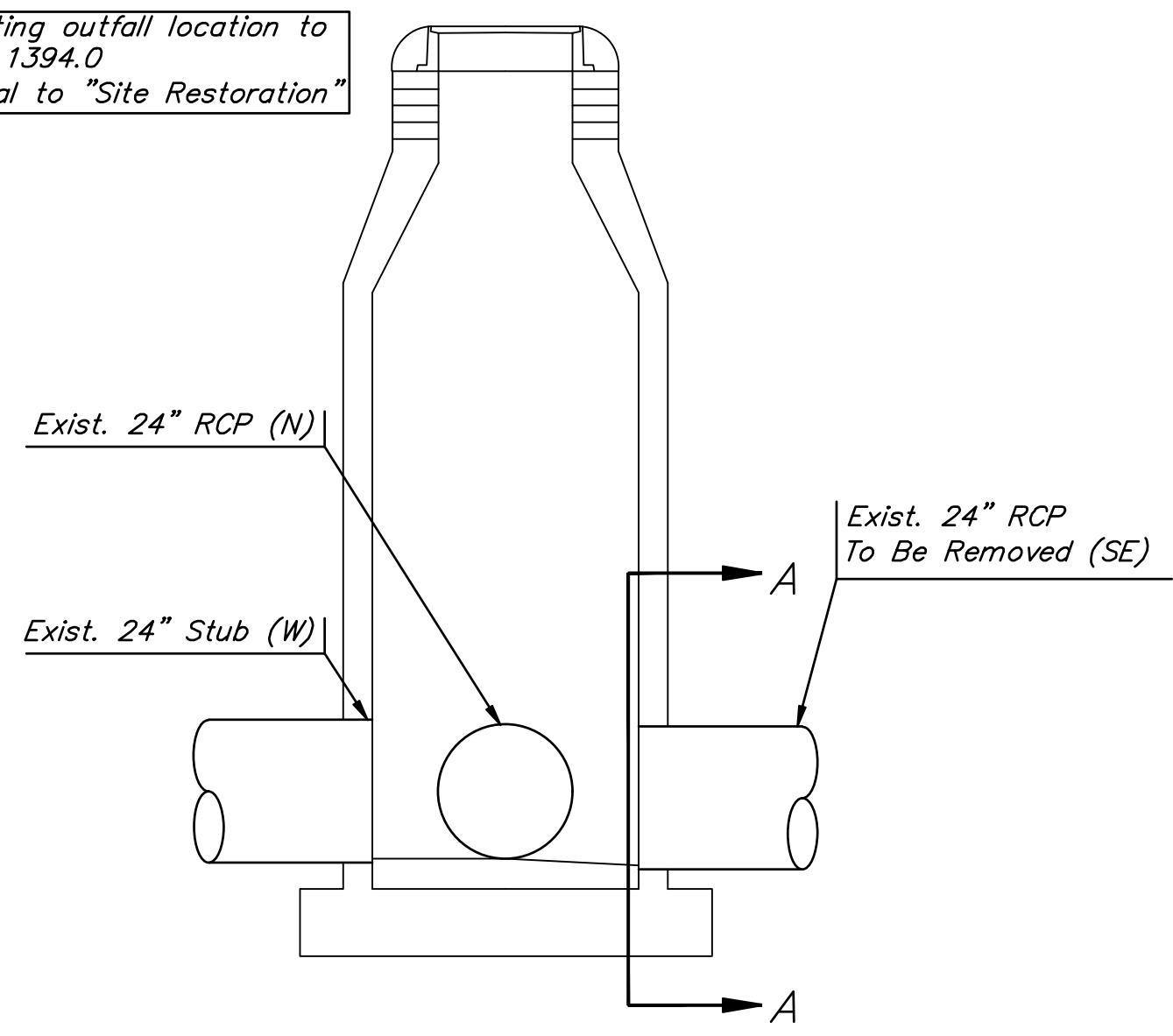
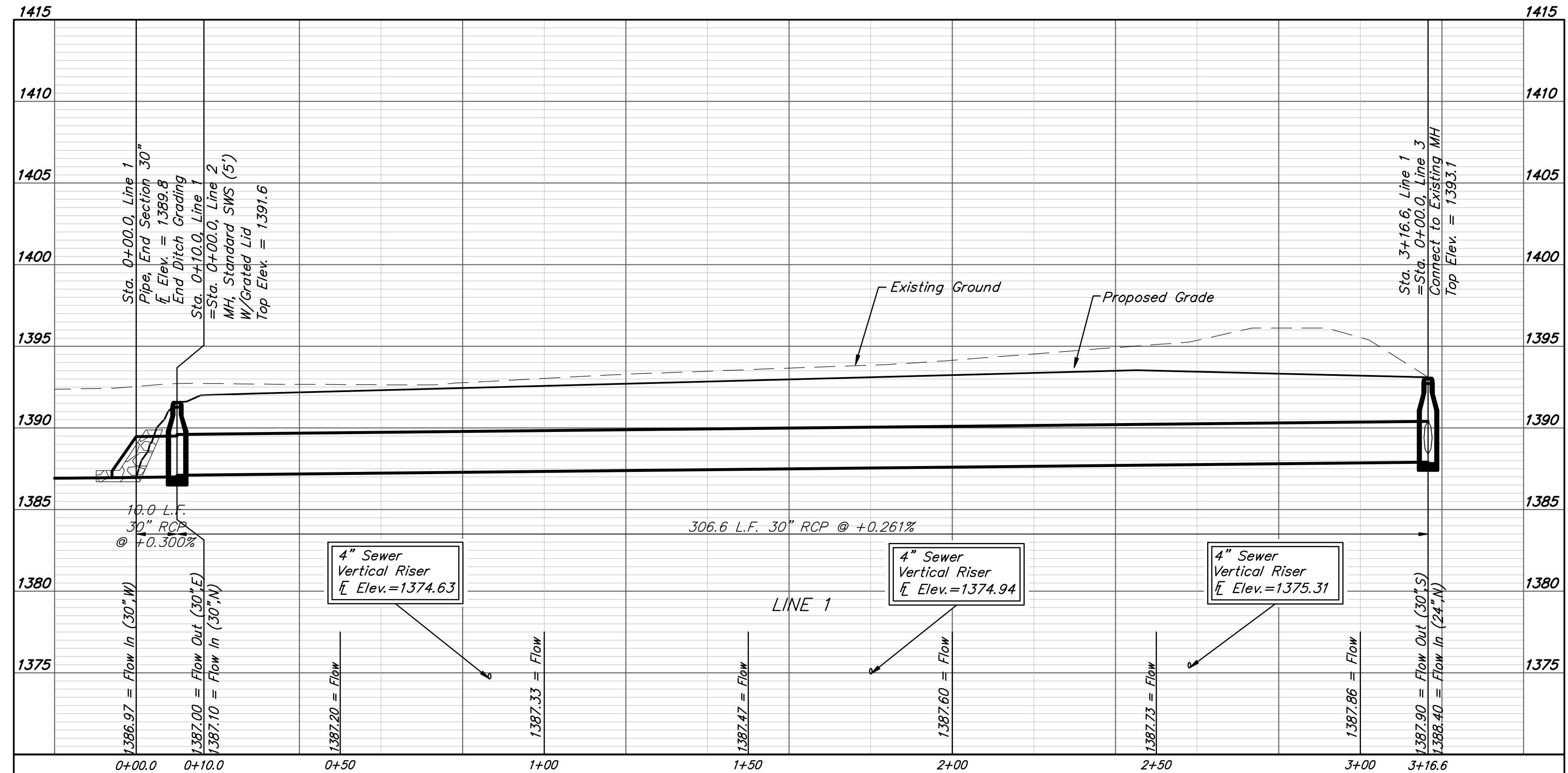


Exist. Sanitary Sewer MH
Top Elev. = 1393.5
Elev. (S) = 1374.05
Elev. (N) = 1373.95
Elev. (W) = 1374.60

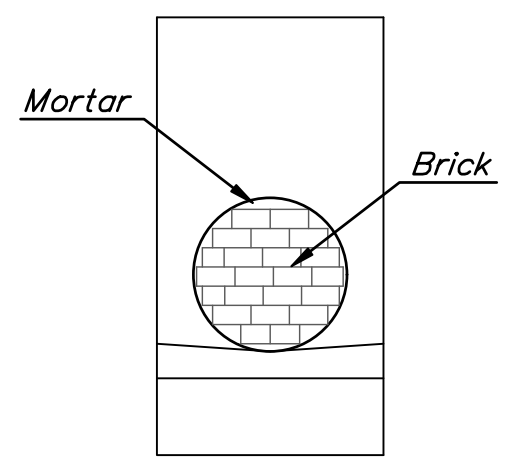
Sta. 3+16.6, Line 1
=Sta. 0+00.0, Line 2
Connect to Existing MH
Top Elev. = 1393.1
N=1,670,576.15 E=1,679,814.39



Note: Contractor to strip top 3" of soil with a Compaction of 90% in outfall area. Compaction requirements shall be placed within ±2% of optimum moisture content of the soil at the time of placement. All testing shall be incidental to Lump Sum bid item "24" RCP & Headwall Removal".



PROFILE VIEW
Sta. 3+16.00, Line 1
Existing Manhole



SECTION A-A
MH Plug Detail

MH Plug shall be constructed of brick masonry. The MH wall opening shall be plugged with an 8" thick plug and finished to a smooth surface on the inside. The construction of the plug shall be considered *Subsidiary* to the removal of existing 24" RCP & headwall.

Baughman Company, P.A.
Baughman
TOWNE PARC 8TH ADDITION
STREET & SWS IMPROVEMENTS
LINE 1

REVISIONS:
SHEET
OF
10
37