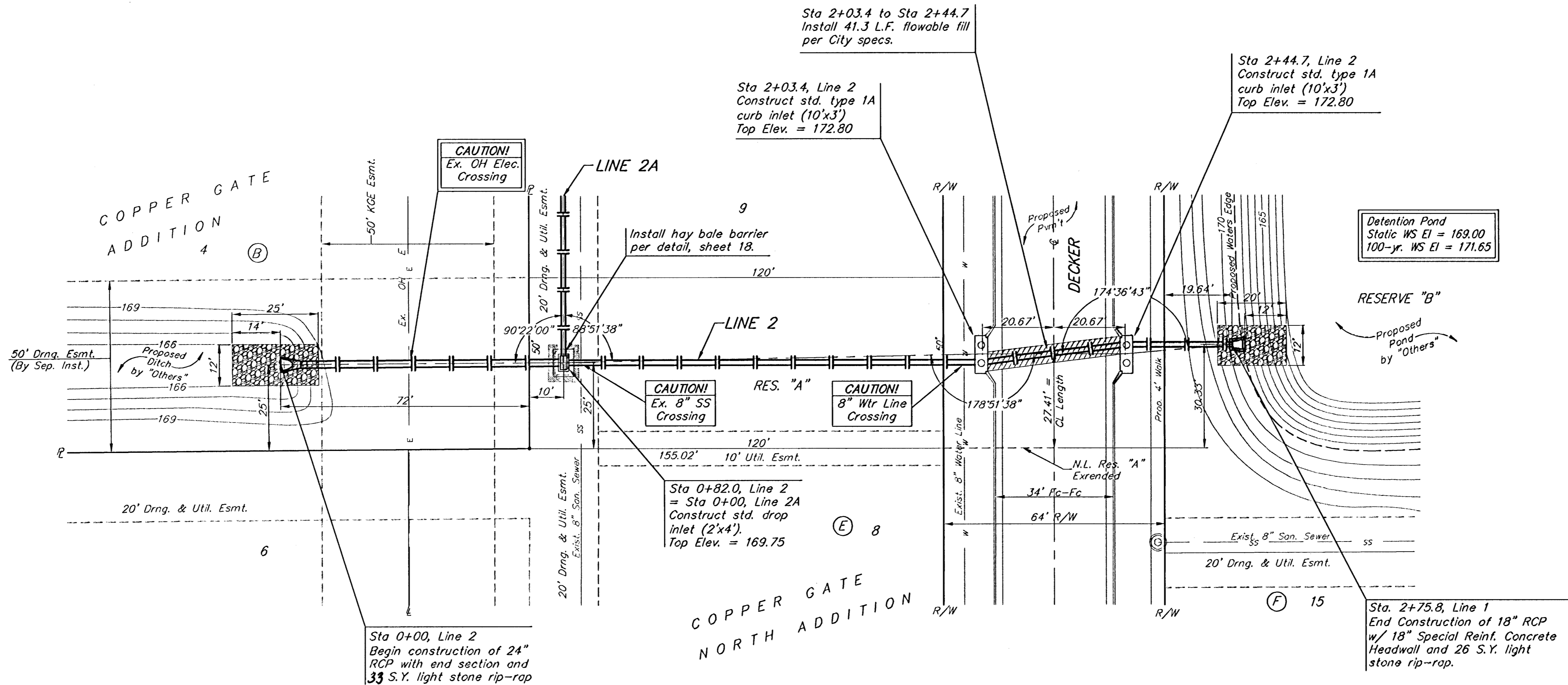


**BENCHMARKS:**

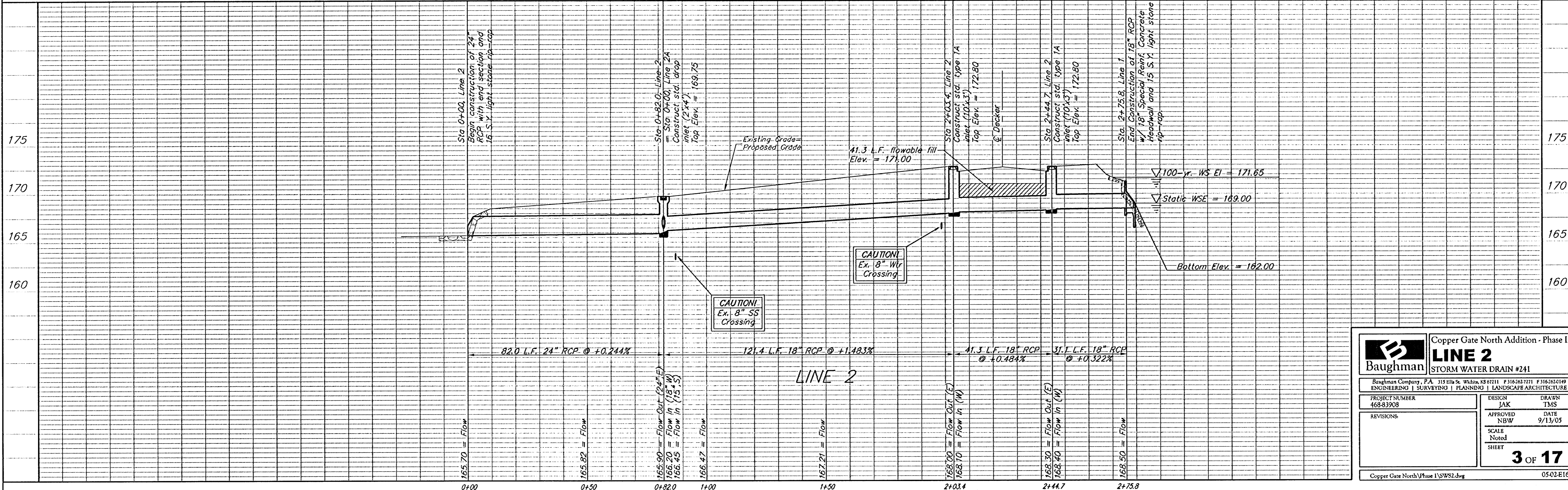
BM #1: C.O.W. disc at SW corner of intersection.  
30.00'± S. of CL of 13th St. N.  
35.00'± W. of CL of 135th St. W.  
Elev. = 168.25 City Datum

BM #2: Small RR spike in 4th HLP  
W. of 135th St. W. on south side of 13th St. N. (N. face of HLP).  
Elev. = 179.24 City Datum

BM #3: RR spike in Power Pole.  
1321.65 W. of 135th St. W.  
30' N. of 13th St. N.  
Elev. = 178.45 City Datum



Scale: 1" = 20' Horizontal  
1" = 5' Vertical  
• = Iron



		Copper Gate North Addition - Phase I <b>LINE 2</b> STORM WATER DRAIN #241	
Baughman Company, P.A. 315 5th & Walnut, 43rd Floor   P 313-333-7171   F 313-333-0149 ENGINEERING   SURVEYING   PLANNING   LANDSCAPE ARCHITECTURE			
PROJECT NUMBER 468-83908	DESIGN JAK	DRAWN TMS	DATE 9/13/05
REVISIONS:	APPROVED NBW	SCALE Noted	SHEET <b>3 OF 17</b>
Copper Gate North Phase I\SWSD.dwg			0502E163