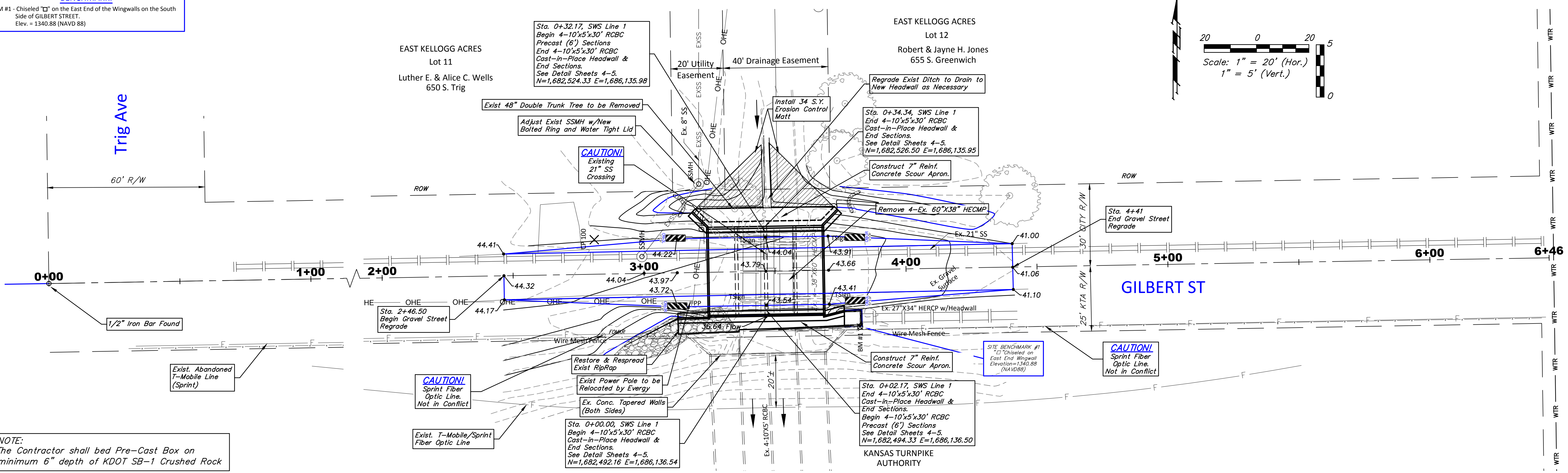


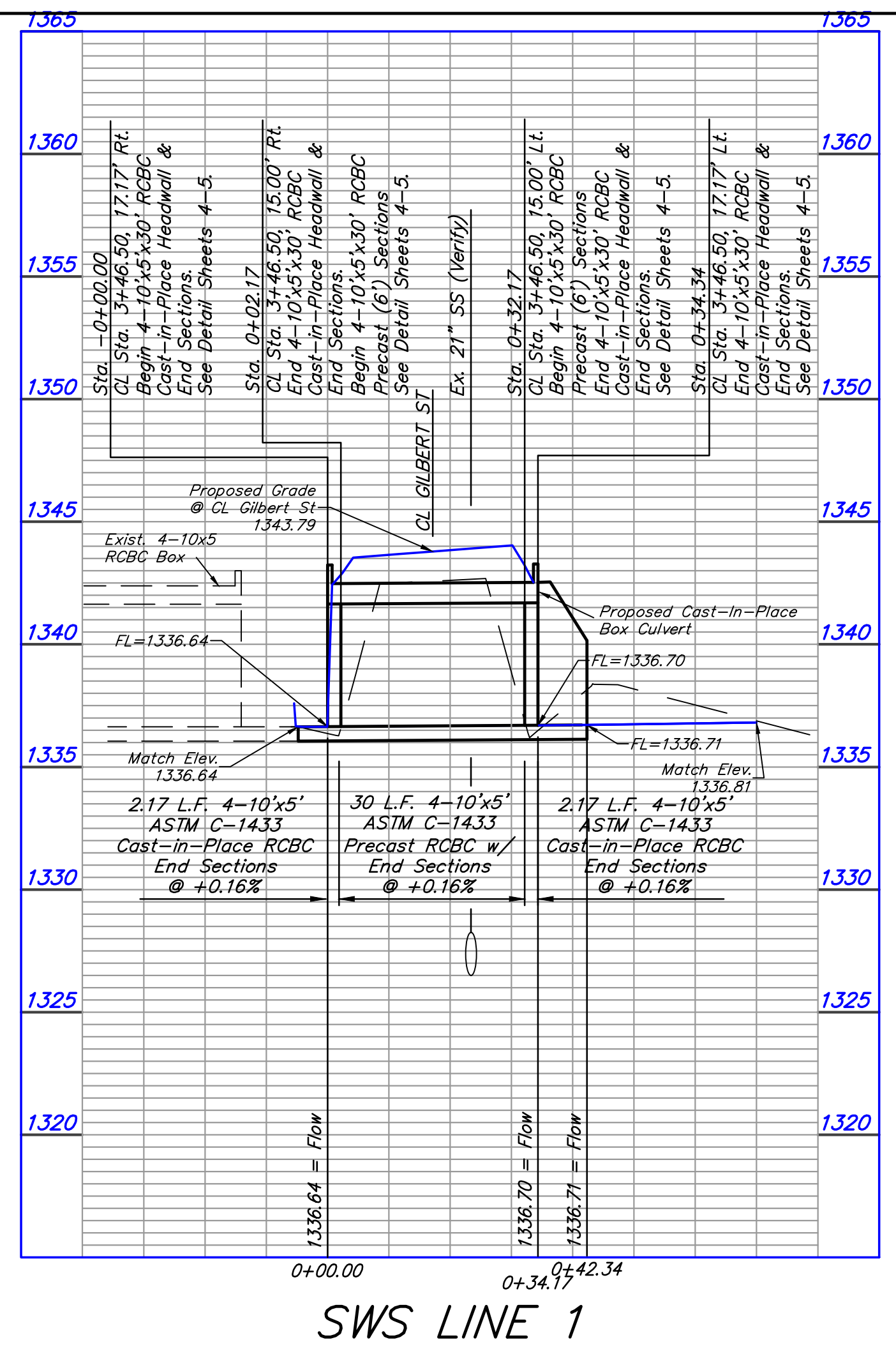
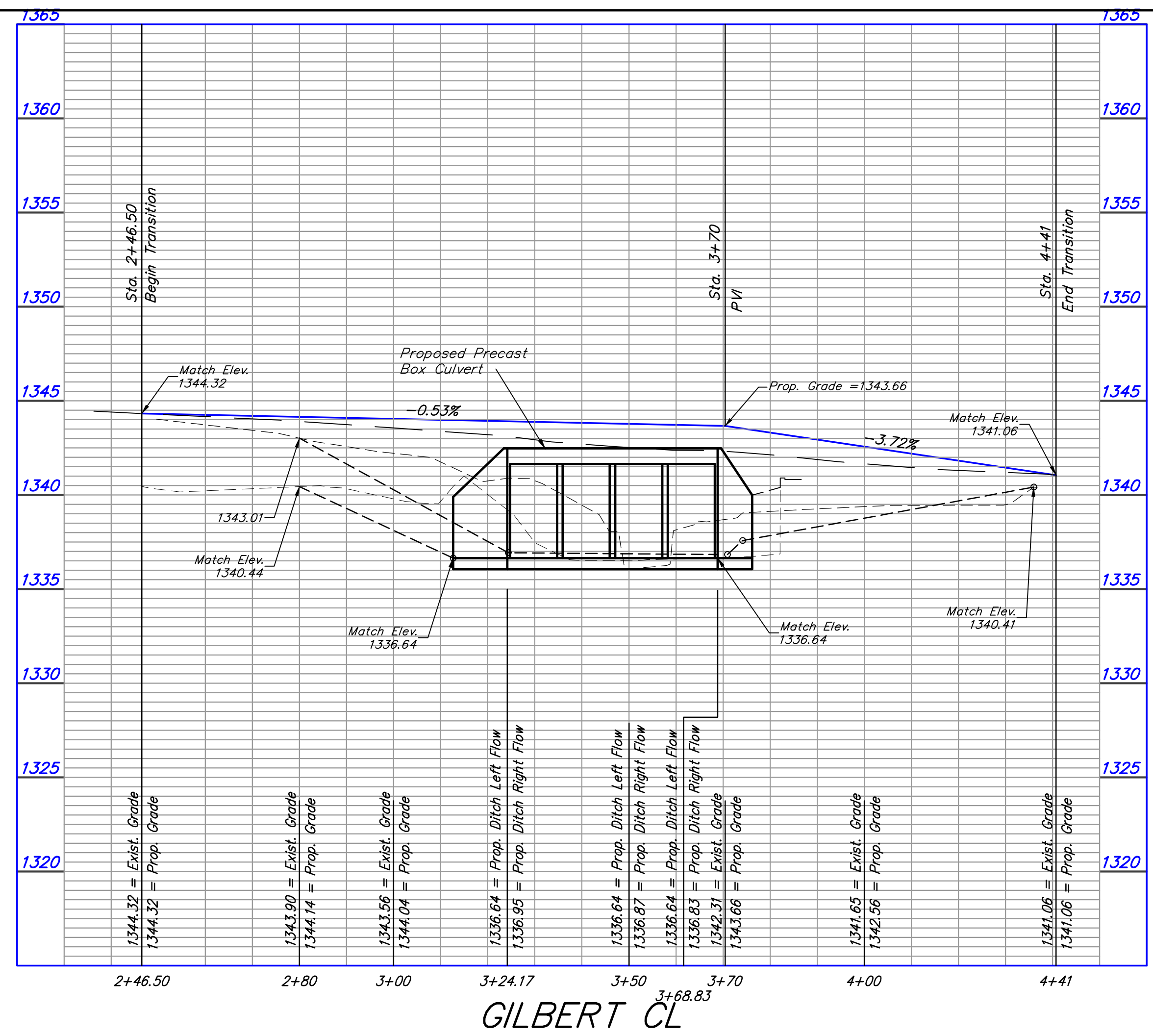
BENCHMARK:
 BM #1 - Chiseled "□" on the East End of the Wingwalls on the South Side of GILBERT STREET.
 Elev. = 1340.88 (NAVD 88)



NOTE:
 The Contractor shall bed Pre-Cast Box on minimum 6" depth of KDOT SB-1 Crushed Rock

BENCHMARKS

- BM #1 - Chiseled "□" on the East End of the Wingwalls on the South Side of GILBERT STREET.
Elev. = 1340.88 (NAVD 88)
- BM #2 - 60 d Nail in the Northeast Corner of Lot 6, East Kellogg Acres Addition.
Elev. = 1342.54 (NAVD 88)
- BM #3 - Baughman Orange Cap on Rebar.
Elev. = 1344.84 (NAVD 88)





BAUGHMAN COMPANY

315 Ellis St.
Wichita, KS 67211
316-262-7271
BaughmanCo.com

GILBERT STREET DRAINAGE IMPROVEMENTS

RCBC PLAN & PROFILES

CAPITOL IMPROVEMENTS PROJECT

PROJECT NUMBER:
458-2022-085509

DESIGN: NBW DRAWN: JSB

DATE: August 16, 2022

SHEET OF
3 8

File: E:\Projects\Gilbert Avenue Drainage - 19-06-E282\Engineering\Gilbert Drainage.dwg