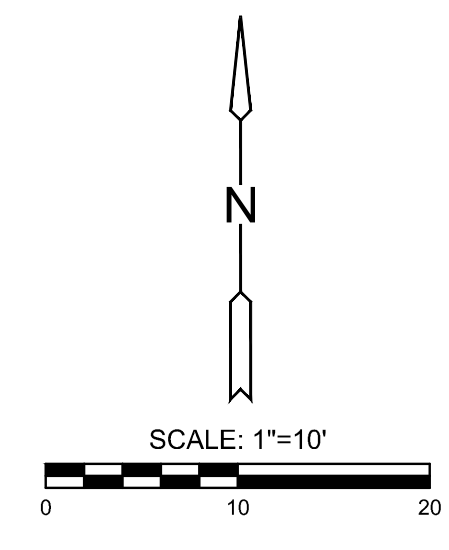
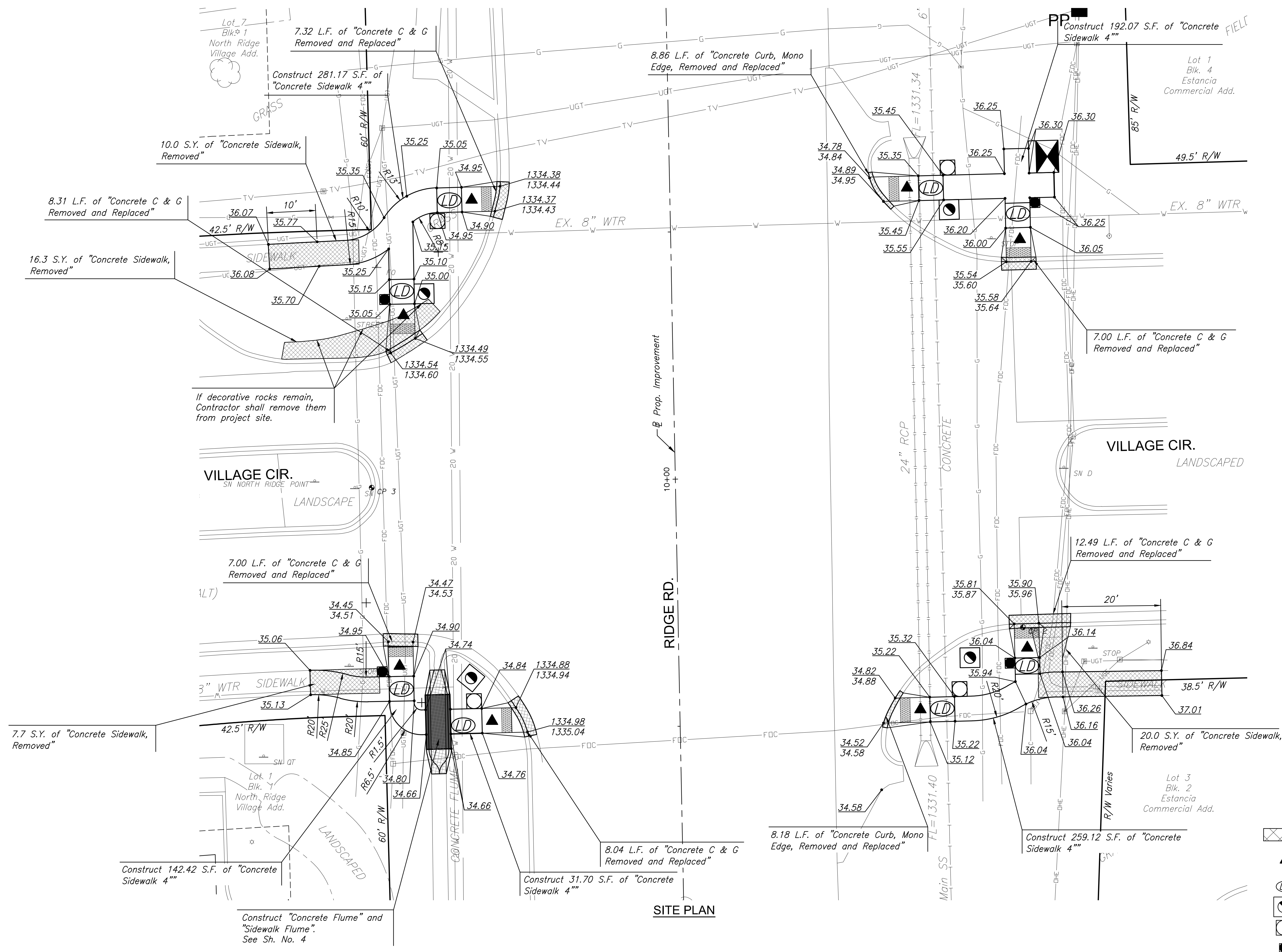


J:\PROJECTS\2019\1901010483_COW_RIDGE AND VILLAGE TRAFFIC SIGNAL_190483_CADD\SHOTS\06_CIVIL\PAV1\190483-06-5005.DWG
 PLOTTED: Monday, August 08, 2022 @ 11:27AM



- LEGEND**
- Pavement Removal
 - Construct Wheelchair Ramp See Sh. No. 6
 - Wheelchair Ramp Landing
 - Service Box
 - Signal Pole
 - Pedestal Pole
 - Pad Mounted Controller



PLANS FOR
RIDGE RD. & VILLAGE CIR. TRAFFIC SIGNAL
WICHITA, KS

©2022
 MKEC Engineering
 All Rights Reserved
 www.mkec.com
 These drawings and their contents, including, but not limited to, all concepts, designs, & ideas are the exclusive property of MKEC Engineering (MKEC), and may not be used or reproduced in any way without the express consent of MKEC.

SITE PLAN		
PROJECT NO.	472-2021-085741	
DATE	8/8/2022	
SCALE	1"=10'	
DESIGNED	DRAWN	CHECKED
JRA	DM	JRA
NO.	REVISION	DATE
SHEET NO.		
3 OF 31		