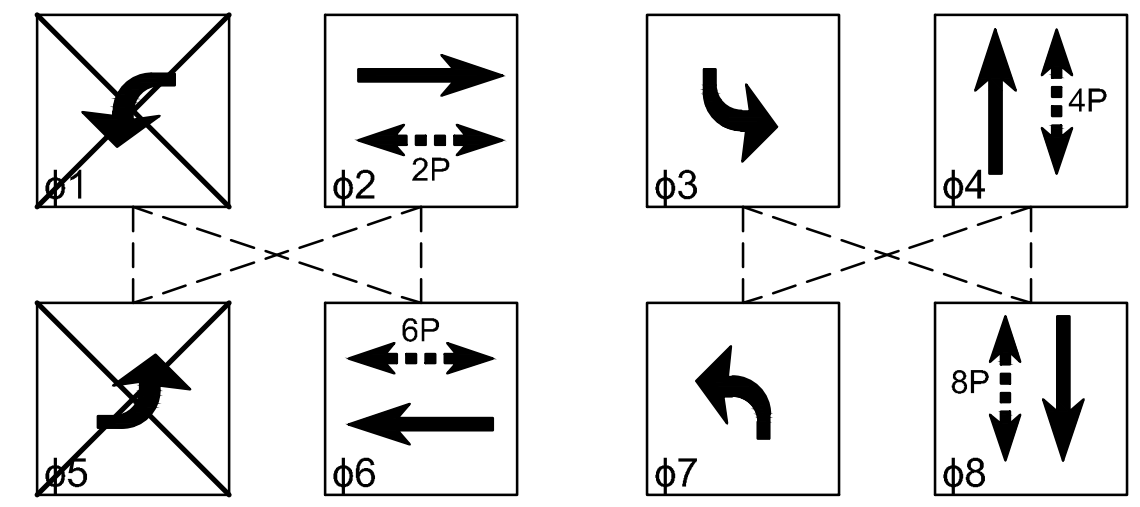


J:\PROJECTS\2019\191010483_COW_RIDGE AND VILLAGE TRAFFIC SIGNAL_190483_CAD\SHOTS\06_CIVIL\TRAFFIC\190483-05-5500.DWG
 P:\UTEDB_Mechery_August 08, 2022 @ 08:44PM
 MKEC Engineering, August 08, 2022 @ 08:44PM

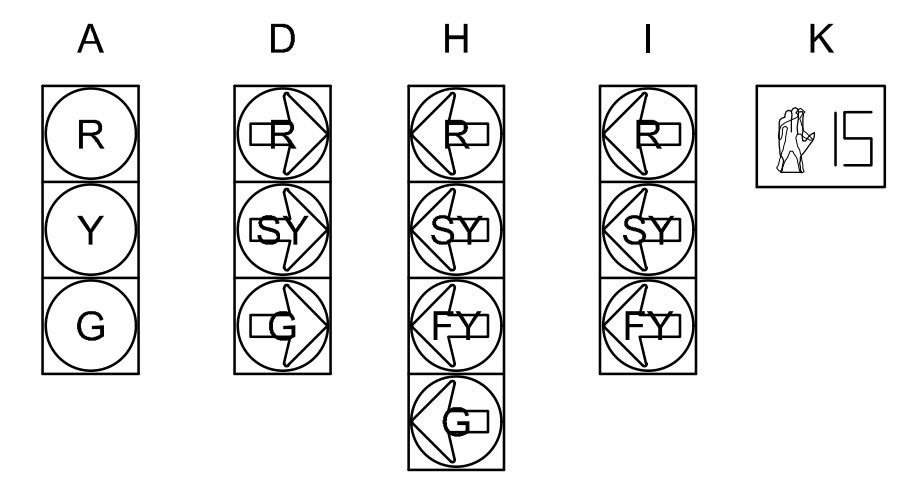
PHASE DIAGRAM



NOTE: DOTTED LINES CONNECTING PHASES INDICATE PHASES THAT CAN OCCUR CONCURRENTLY. PEDESTRIAN PHASE TO ONLY OCCUR AFTER PUSH BUTTON ACTIVATION.

SIGNAL FACES

NOTE: ALL LENSES SHALL BE 12" L.E.D. PEDESTRIAN LENSES SHALL BE 16" AND BE COUNTDOWN SIGNALS.



STRUCTURE LOCATIONS

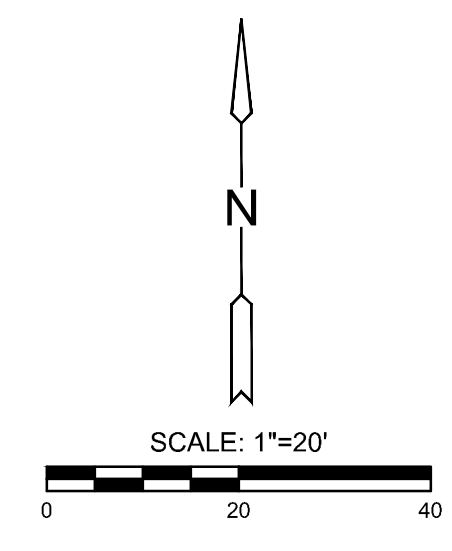
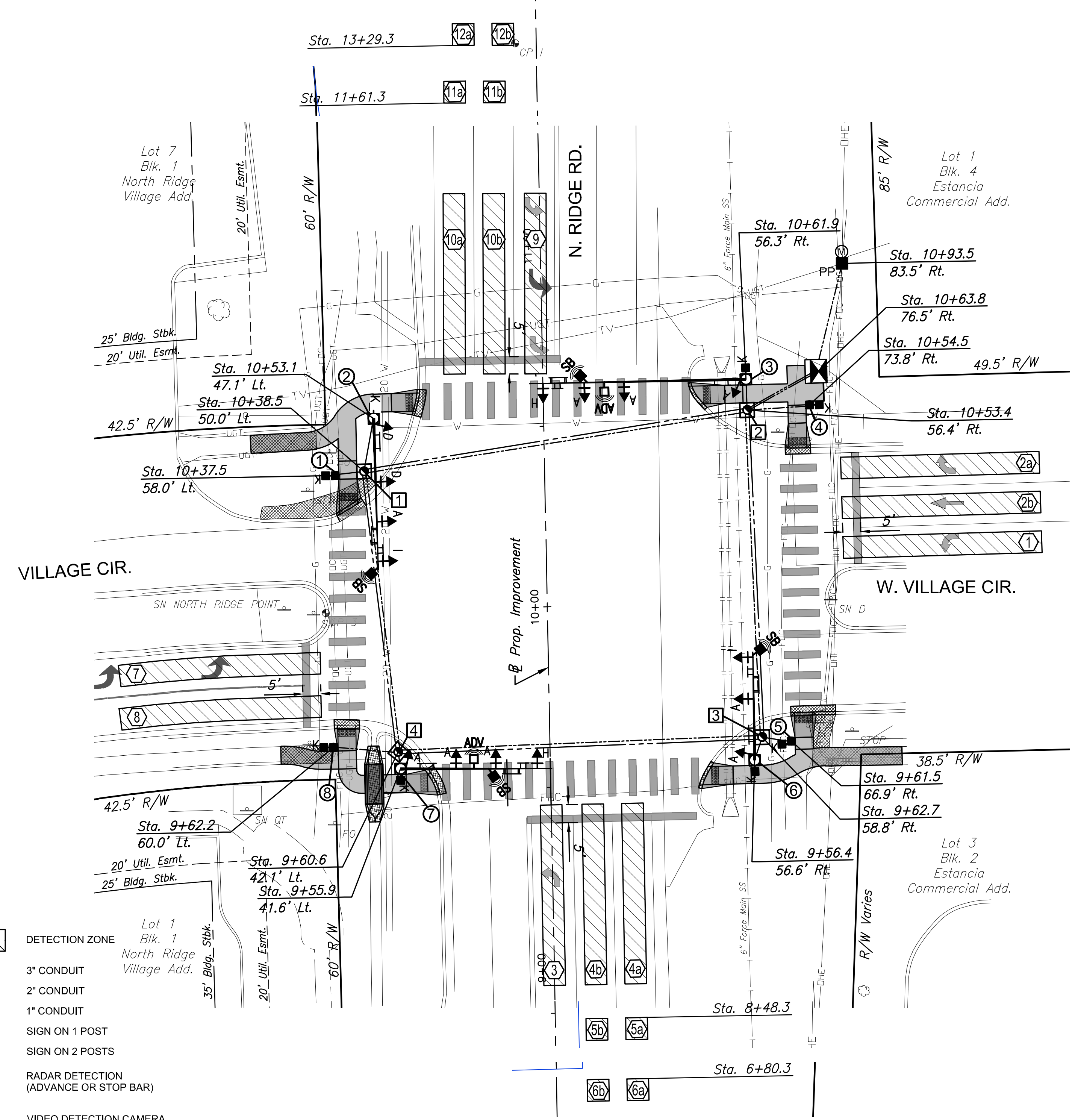
POLE NO.	* TYPE	STATION	OFFSET	NORTHING	EASTING	** ELEV.
1	PED	10+37.5	58.0' Lt.	1711583.898	1622841.782	1335.07
2	POLE	10+53.1	47.1' Lt.	1711599.746	1622852.451	1334.95
3	POLE	10+61.9	56.3' Rt.	1711610.561	1622955.584	1335.50
4	PED	10+54.5	73.8' Rt.	1711603.490	1622973.238	1336.25
5	PED	9+61.5	66.9' Rt.	1711510.346	1622968.229	1336.04
6	POLE	9+56.4	56.6' Rt.	1711505.095	1622958.029	1335.42
7	POLE	9+55.9	41.6' Lt.	1711502.644	1622859.857	1334.84
8	PED	9+62.2	60.0' Lt.	1711508.590	1622841.303	1334.93
Meter	-	10+93.5	83.5' Rt.	1711642.670	1622982.221	N/A
Cont.	-	10+63.8	76.5' Rt.	1711612.810	1622975.754	1336.30

SERVICE BOX LOCATIONS

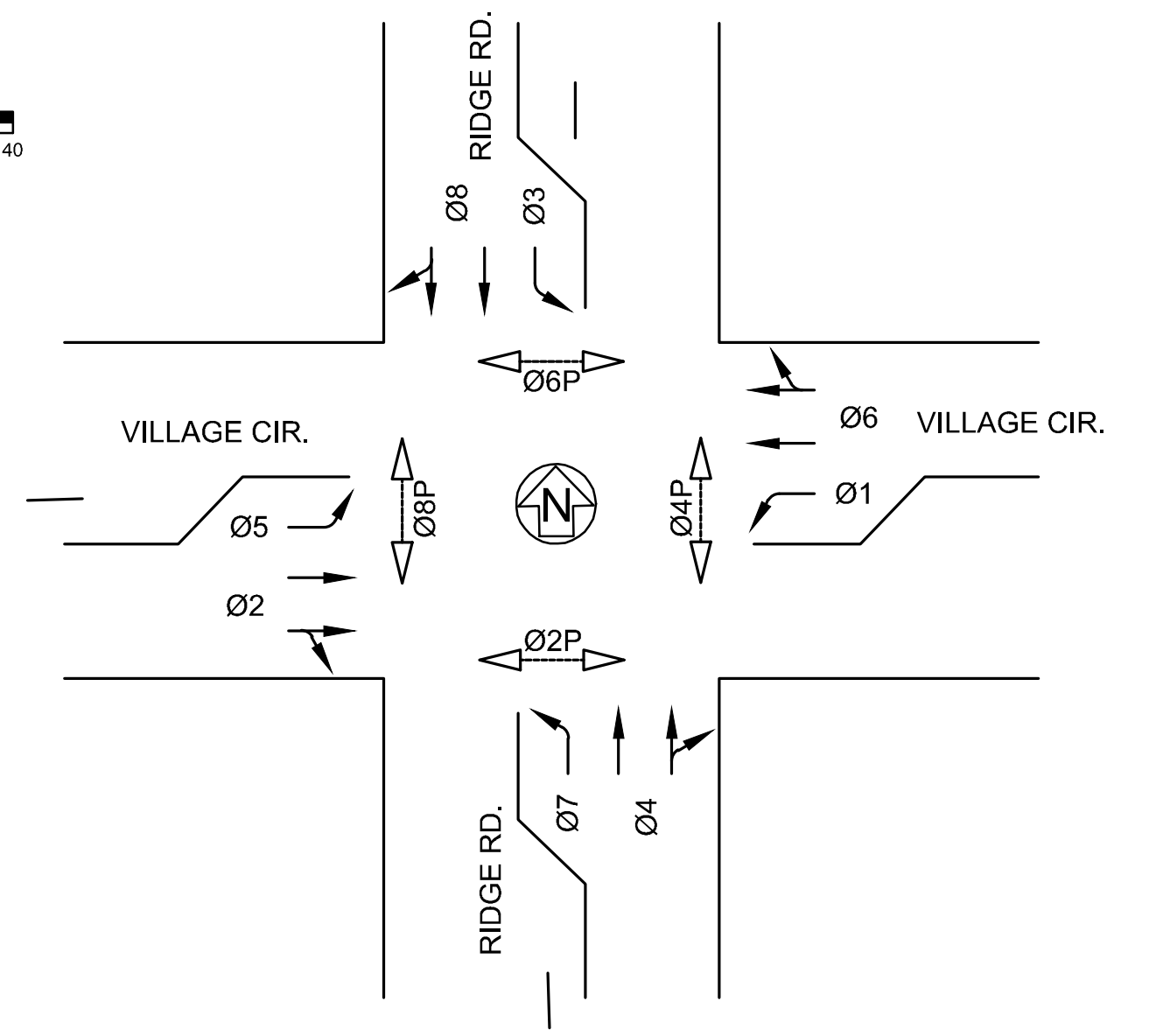
BOX NO.	STATION	OFFSET	NORTHING	EASTING	** ELEV.
1	10+38.5	50.0' Lt.	1711585.055	1622849.761	1335.04
2	10+53.4	56.4' Rt.	1711602.070	1622955.912	1335.60
3	9+62.7	58.8' Rt.	1711511.453	1622960.106	1335.93
4	9+60.6	42.1' Lt.	1711507.326	1622859.236	1335.20

* STRUCTURE TYPES: POLE - TRAFFIC SIGNAL POLE; PED - TRAFFIC SIGNAL PEDESTAL; PB STA. - APS PUSH BUTTON STATION

** APPROXIMATE TOP OF FOUNDATION. SEE STANDARDS AND SPECS FOR ADDITIONAL INFORMATION. FOUNDATIONS SHALL NOT CREATE A "LOW AREA".



SIGNAL PHASES



LEGEND

	LUMINAIRE		DETECTION ZONE
	TRAFFIC SIGNAL POLE		3" CONDUIT
	TRAFFIC SIGNAL PEDESTAL		2" CONDUIT
	APS PUSHBUTTON STATION		1" CONDUIT
	TRAFFIC SIGNAL HEAD W/TYPE DESIGNATION		SIGN ON 1 POST
	TRAFFIC SIGNAL HEAD W/TYPE DESIGNATION & BACKPLATE		SIGN ON 2 POSTS
	PEDESTRIAN SIGNAL & PUSHBUTTON		RADAR DETECTION (ADVANCE OR STOP BAR)
	POLE MOUNTED CONTROLLER		VIDEO DETECTION CAMERA
	PAD MOUNTED CONTROLLER		PTZ CCTV
	SERVICE BOX		DETECTOR NUMBER
	SECONDARY SERVICE POINT		POLE/PEDESTAL NUMBER
	PEDESTRIAN PUSHBUTTON		SERVICE BOX NUMBER
	POWER POLE		
	METER BOX AND POWER DISCONNECT		

GENERAL NOTES:

- CONDUIT RUNS ARE APPROXIMATE & MAY BE FIELD ADJUSTED TO CLEAR OBSTRUCTIONS & FACILITATE WIRING, AS APPROVED BY THE ENGINEER. ALL CONDUIT RUNS SHALL BE STRAIGHT BETWEEN BOXES AND/OR FOUNDATIONS.
- EXISTING FEATURES & UTILITIES ARE SHOWN FROM AVAILABLE INFORMATION & SHOULD BE CONSIDERED APPROXIMATE ONLY. IT IS THE RESPONSIBILITY OF THE CONTRACTOR TO VERIFY UTILITIES & THEIR EXACT LOCATION PRIOR TO CONSTRUCTION.
- SEE "TRAFFIC SIGNAL INSTALLATION DETAIL SHEET" (TR-105) FOR SIGN SPACING AND ADDITIONAL DETAILS.



PLANS FOR
RIDGE RD. & VILLAGE CIR. TRAFFIC SIGNAL
WICHITA, KS

©2022 MKEC Engineering All Rights Reserved www.mkec.com
 These drawings and their contents, including, but not limited to, all concepts, designs, & ideas are the exclusive property of MKEC Engineering (MKEC), and may not be used or reproduced in any way without the express consent of MKEC.

TRAFFIC SIGNAL PLAN

PROJECT NO.	472-2021-085741	
DATE	8/8/2022	
SCALE	1"=20'	
DESIGNED	JRA	
DRAWN	WNJ	
CHECKED	JRA	
NO.	REVISION	DATE

SHEET NO.
10 OF 31