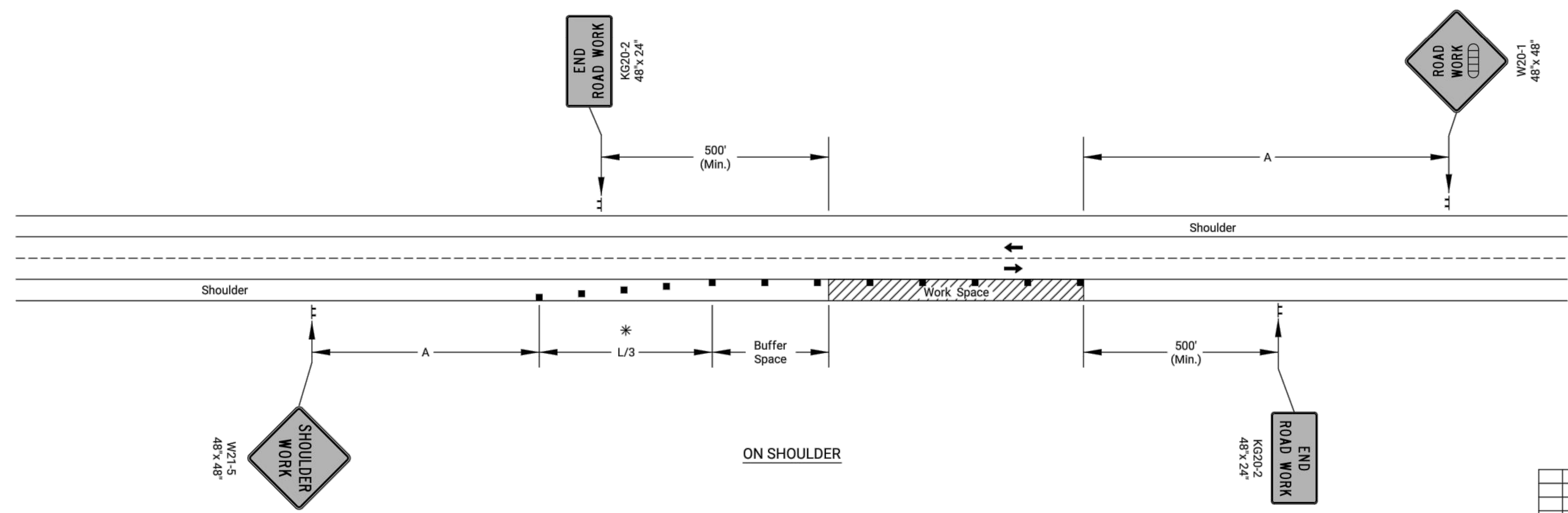


Notes:

No traffic control is required if the Work Space is located outside of the clear zone.

For operations of 60 minutes or less, all signs and channelizing devices may be eliminated if a vehicle with high-intensity rotating, flashing, oscillating, or strobe lights is used.



* Omit taper if paved shoulder is less than 8' wide.

- Channelizing Device
- ◻◻◻◻ Ahead, 1500 ft, or 1 Mile

NO.	DATE	REVISIONS	BY	APPD.

KANSAS DEPARTMENT OF TRANSPORTATION
TRAFFIC CONTROL SHOULDER WORK UNDIVIDED ROADWAY

TE720

FHWA APPROVAL	06-01-15	APP'D.	Kristina Erickson
DESIGNED	L.E.R.	DETAILED	R.W.B.
DESIGN CK.	DETAIL CK.	QUANTITIES	TRACE CK.

J:\PROJECTS\2019\19010483_COW_RIDGE AND VILLAGE TRAFFIC SIGNAL_190483_CADD\SHOTS\66_CIVIL\TRAFFIC\190483-05-5764.DWG
 PLOTTED: Monday, August 08, 2022 @ 11:32AM