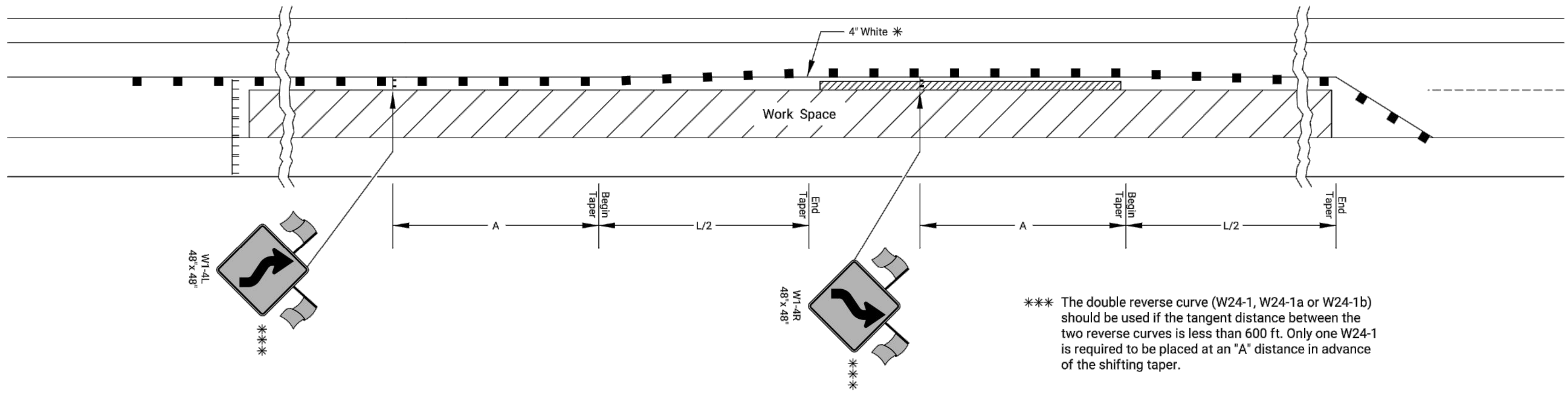


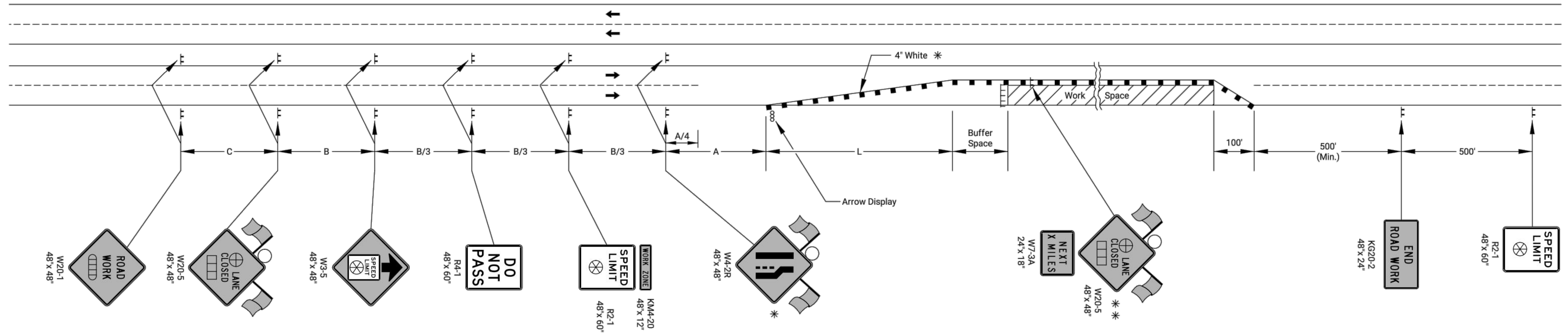
STATE	PROJECT NO.	YEAR	SHEET NO.	TOTAL SHEETS
KANSAS	472-2021-085741	2022	31	31

SHIFTING TAPER DETAIL

Add signs and devices as shown for work inside a closed lane that extends near to (or into) the open traffic lane.



*** The double reverse curve (W24-1, W24-1a or W24-1b) should be used if the tangent distance between the two reverse curves is less than 600 ft. Only one W24-1 is required to be placed at an "A" distance in advance of the shifting taper.



- ▤ Type 3 Barricades
- X Length to the Nearest Whole Mile
- Channelizing Device
- ▭ Ahead, 1500 ft, or 1 mile
- ▭ Ahead, 1000 ft, 1500 ft, or 1/2 mile
- ⊕ Right or Left
- ⊗ Speed to be determined by the Engineer
- Type "A" Low Intensity Warning Light

- * For left lane closures use W4-2L and yellow edge line along channelizing devices.
- * * The W20-5 (⊕ Lane Closed) and W7-3A (Next X Miles) signs should be placed at 2 mile increments on a project of 4 miles or longer.

Left-side signs shall be omitted for a four-lane undivided highway.

One flagger should be stationed within each multi-lane roadway activity area where work is in a closed lane adjacent to traffic and not separated by a concrete safety barrier system.

01	03-13-18	W24-1 usage changed to Should	R.W.B.	E.G.K.
NO.	DATE	REVISIONS	BY	APPD
KANSAS DEPARTMENT OF TRANSPORTATION				
TRAFFIC CONTROL LANE CLOSURE ON MULTILANE HWY				
TE744				
FHWA APPROVAL		03-13-18	APPD.	Eric Koehler
DESIGNED	B.A.H.	DETAILED	R.W.B.	QUANTITIES
DESIGN CK.	DETAIL CK.	QUAN. CK.	TRACED	TRACE CK.