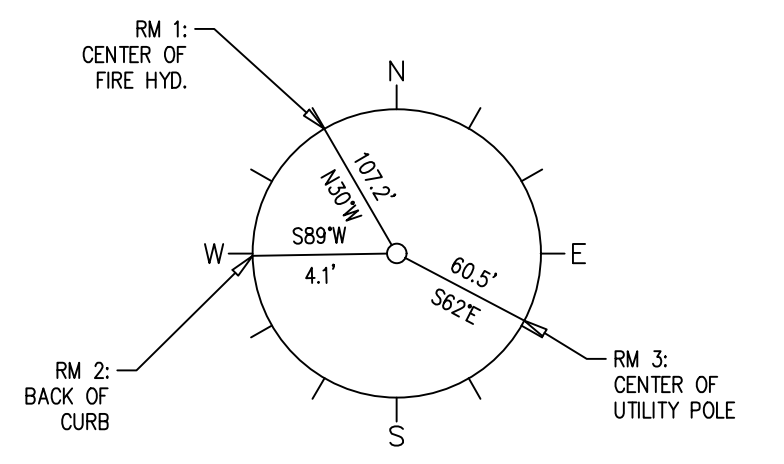
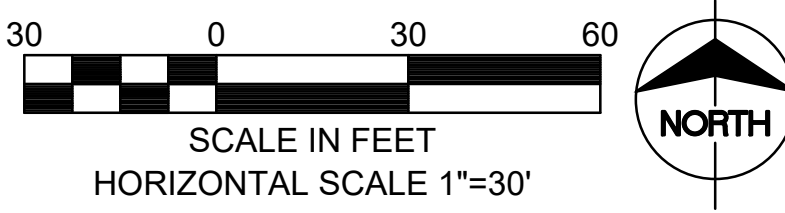


k:\net\pb2\72-1380\DESIGN\SITE\C101.dwg Jan 19, 2022 9:25am

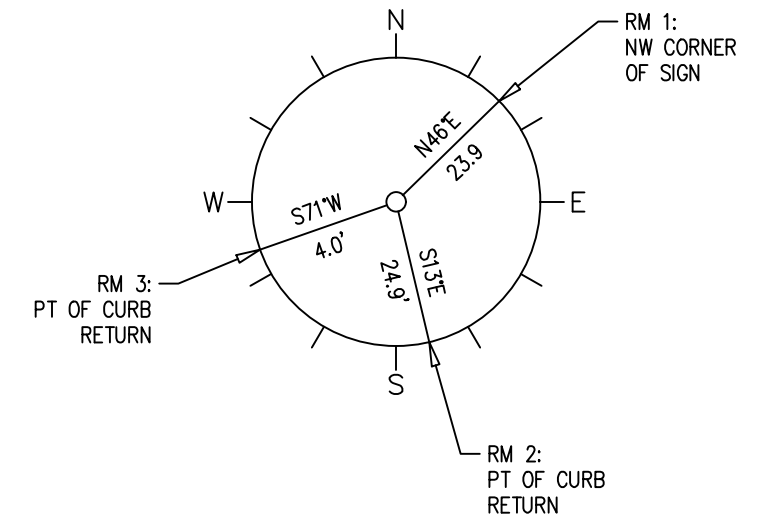
LEGAL DESCRIPTION:

THE NORTH 326.75 FEET OF LOT 8,
ROCK ISLAND INDUSTRIAL PARK ADDITION
WICHITA, SEDGWICK COUNTY, KANSAS



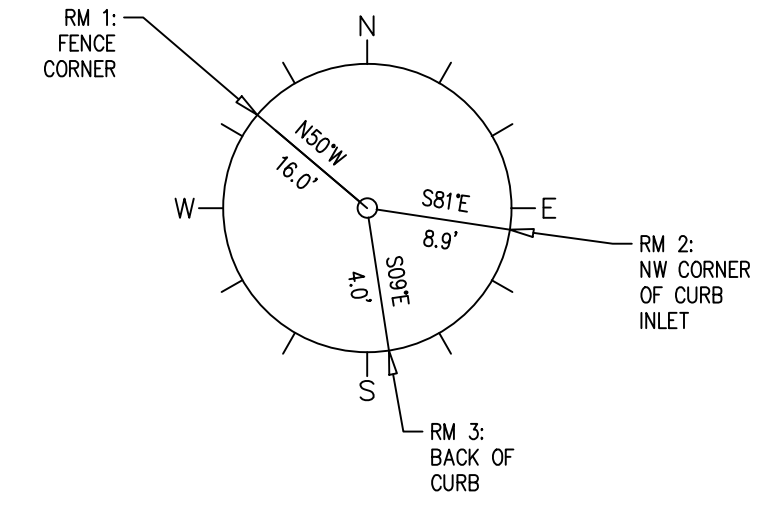
CP #560 ELEV.= 1273.60
N: 1,659,060.28 E: 1,647,866.82

SET 1/2" BAR WITH PLASTIC T&B CAP EAST OF S. PALISADE AVE. ACROSS FROM THE NORTHERN ENTRANCE TO SAIS LTL PROPERTY



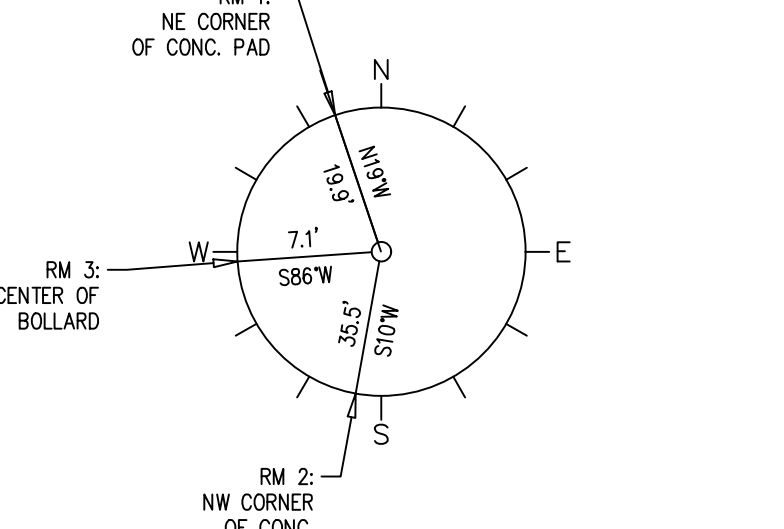
CP #562 ELEV.= 1275.13
N: 1,658,232.76 E: 1,647,879.99

SET 1/2" BAR WITH PLASTIC T&B CAP EAST OF PALISADE AVE. AND NORTH OF THE SOUTH ENTRANCE TO THE PROPERTY AT 4626 S. PALISADE AVE.



CP #563 ELEV.= 1272.69
N: 1,659,282.17 E: 1,647,825.73

SET MAG NAIL IN ASPH. ON SAIA LTL PROPERTY EAST OF FUEL TANK



CP #564 ELEV.= 1274.68
N: 1,659,103.98 E: 1,647,586.86

SET MAG NAIL IN ASPH. ON SAIA LTL PROPERTY EAST OF FUEL TANK

GastingerWalker &
Architects Interior Designers Construction Managers
817 Wyandotte Kansas City Missouri 64105 816.421.8200 gastingerwalker.com

CIVIL
Taliaferro & Browne, Inc
1020 East 8th St.
Kansas City, MO 64106
816.283.3456
STRUCTURAL
Bob D. Campbell
4338 Bellevue Ave.
Kansas City, MO 64111
816.531.4144
M/E/P
IMEG
1600 Baltimore, Suite 300
Kansas City, MO 64108
761.842.8437

SAIA LTL Freight

Terminal Expansion and Remodel
4525 South Palisade Ave.
Wichita, KS 67217

SAIA LTL Freight
11465 Johns Creek Parkway
Johns Creek, GA 30097
800.765.7242

ISSUED FOR:
Review 19 January 2022

FINAL PLAN SET



Drawn By TE/WB
Checked By MN/LJG

SITE SURVEY

C-101
Project Number: 2021.229 © Copyright 2021

FIRE HYDRANTS REQUIRED				
STATION	BURY LINE ELEVATION	TOP OF PIPE ELEVATION	FIRE HYDRANT BURY REQUIRED	VALVE STEM EXT. REQUIRED (FT)
0+04	1273.53	1270.03 +/-	5 FT	

LEGAL DESCRIPTION:
 THE NORTH 326.75 FEET OF LOT 8,
 ROCK ISLAND INDUSTRIAL PARK ADDITION
 WICHITA, SEDGWICK COUNTY, KANSAS

GENERAL NOTES:

- CONTRACTOR SHALL ESTABLISH ALL HORIZONTAL AND VERTICAL CONTROL IN CONFORMANCE WITH THE PLANS. VARIATIONS WILL REQUIRE ADVANCE APPROVAL IN WRITING FROM THE ARCHITECT OR ENGINEER.
- ALL MATERIALS AND CONSTRUCTION SHALL BE IN ACCORDANCE OR IN COMPLIANCE WITH THE FOLLOWING SPECIFICATIONS:
 - STANDARD SPECIFICATIONS AND DESIGN CRITERIA FOR THE CITY OF WICHITA, KANSAS.
 - WICHITA, KANSAS STANDARD DRAWINGS
 - THE PROJECT GEOTECHNICAL REPORT
- THE UTILITY LOCATIONS SHOWN ON THESE PLANS ARE TAKEN FROM UTILITY COMPANY RECORDS OR FROM FIELD SURVEY OF SURFACE PROJECTIONS. THESE LOCATIONS ARE APPROXIMATE ONLY. THEY DO NOT CONSTITUTE COMPLETE UTILITIES AND/OR ACTUAL FIELD LOCATIONS. THE CONTRACTOR SHALL VERIFY THE LOCATION AND DEPTH OF ALL UTILITIES (INCLUDING ANY UNKNOWN UTILITIES) PRIOR TO CONSTRUCTION.
- PRIOR TO COMMENCEMENT OF WORK, THE CONTRACTOR SHALL NOTIFY ALL THOSE COMPANIES WHICH HAVE FACILITIES IN THE VICINITY OF THE CONSTRUCTION TO BE PERFORMED.
- DISPOSAL OF ALL DEBRIS THEREFROM SHALL BE PERFORMED BY THE CONTRACTOR IN STRICT ACCORDANCE WITH ALL LOCAL CODES AND ORDINANCES.
- THE CONTRACTOR SHALL NOT DAMAGE ANY PRIVATE PROPERTY. ANY DAMAGE RESULTING FROM THE CONTRACTOR'S OPERATIONS SHALL BE THE SOLE RESPONSIBILITY OF THE CONTRACTOR AND SHALL BE REPAIRED AND/OR REPLACED AT THE CONTRACTOR'S EXPENSE.
- THE CONTRACTOR SHALL BE RESPONSIBLE FOR ADJUSTING TO FINISHED GRADE, ALL MANHOLE TOPS, VALVE COVERS, METER COVERS AND ANY OTHER SURFACE PROJECTIONS TO REMAIN.
- IT SHALL BE THE CONTRACTOR'S RESPONSIBILITY TO MAKE A VISUAL INSPECTION OF THE PROJECT AREA SO AS TO FAMILIARIZE HIMSELF WITH THE SCOPE OF THE WORK AND THE REQUIREMENTS FOR COMPLETING THE WORK.
- ALL CONCRETE FLATWORK OR ASPHALTIC CONCRETE PAVEMENT TO BE REMOVED WHICH IS ADJACENT TO CONCRETE OR ASPHALTIC CONCRETE PAVEMENT TO REMAIN, SHALL BE FIRST CUT FULL DEPTH WITH A CONCRETE SAW SO AS TO FORM A NEAT EDGE AGAINST EXISTING PAVEMENT. THE JOINT BETWEEN EXISTING AND NEW CONCRETE SURFACE SHALL BE AN EXPANSION JOINT FILLED WITH 1/2 INCH THICK EXPANSION JOINT MATERIAL. THE TOP 1/2 INCH OF THE JOINT SHALL BE CAULKED.
- CONTRACTOR'S WORK SHALL NOT INTERFERE WITH EXISTING TRAFFIC FLOW, EXCEPT AS NOTED. ANY LANE CLOSING SHALL BE COORDINATED WITH, AND PERMITTED BY THE TRAFFIC DEPARTMENT. A TRAFFIC CONTROL PLAN SHALL BE SUBMITTED FOR REVIEW AND APPROVAL BY THE CONTRACTOR. ALL TRAFFIC SIGNS AND PAVEMENT MARKINGS MUST CONFORM TO THE "MANUAL ON UNIFORM TRAFFIC CONTROL DEVICES" (LATEST EDITION).
- PROVIDE DOWELED EXPANSION JOINT AT ALL PC & PT OF CURB AND GUTTER AND PROPERTY LINE AT DRIVES.
- PROVIDE CURB CONTRACTION JOINTS AT 10' MAXIMUM CENTERS.
- CONTRACTOR SHALL RESEED OR ALL DISTURBED AREAS PER LANDSCAPE PLANS.

WATER SERVICE LINE GENERAL NOTES:

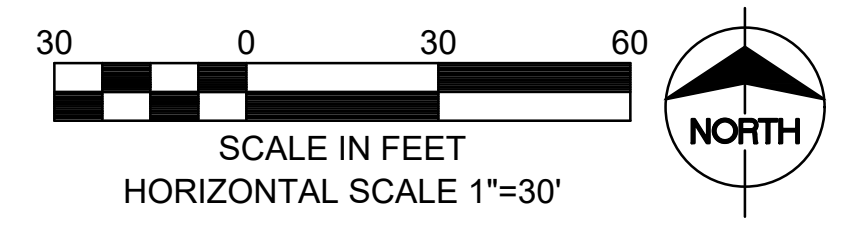
- ALL WORK SHALL BE DONE IN ACCORDANCE WITH THE STANDARDS AND SPECIFICATIONS FOR WATER MAIN EXTENSIONS AND RELOCATIONS OF THE CITY OF WICHITA, KANSAS WATER SERVICES DEPARTMENT.
- ALL WORKMANSHIP AND MATERIALS SHALL BE SUBJECT TO THE INSPECTION AND APPROVAL OF THE WATER SERVICES DEPARTMENT OF THE CITY OF WICHITA, KANSAS.
- THE CONTRACTOR SHALL FURNISH AND INSTALL ALL FITTINGS REQUIRED TO PROVIDE PROPER HORIZONTAL AND VERTICAL ALIGNMENT FOR NEW WATER CONNECTIONS TO EXISTING WATER MAINS AND SERVICE LINES AT THE PROPER LOCATION AND ELEVATION, WHETHER OR NOT THE FITTINGS ARE CALLED OUT ON THESE PLANS.
- THE CONTRACTOR SHALL FURNISH AND INSTALL, AT NO EXTRA COST, ALL TEMPORARY BLOW-OFF ASSEMBLIES AND ALL FITTINGS FOR TESTING, CHLORINATION, DECHLORINATION AND FLUSHING THE NEW WATER SERVICE LINES.
- ALL JOINTS SHALL BE OBSERVED UNDER LINE PRESSURE FOR PRESSURE TEST.
- IT IS THE CONTRACTOR'S RESPONSIBILITY TO PROVIDE ALL ASBUILT FIELD NOTES AND PLANS.
- THE CONTRACTOR SHALL FURNISH AND INSTALL ALL VALVES AND FITTINGS NECESSARY FOR CONNECTION TO THE EXISTING WATER SUPPLY MAINS AT THE LOCATIONS SHOWN ON THE PLANS. IT IS THE CONTRACTOR'S RESPONSIBILITY TO FIELD VERIFY THE LOCATIONS, MATERIAL AND SIZE OF ALL EXISTING MAINS AND FACILITIES BEFORE ORDERING NEW MATERIAL. NO EXTRA PAYMENT SHALL BE MADE FOR ANY VARIATIONS IF FOUND.
- CONSTRUCTION STAKING FOR THIS PROJECT SHALL BE PROVIDED BY THE CONTRACTOR. THE SITE UTILITY CONTRACTOR SHALL BE RESPONSIBLE FOR COORDINATING THEIR WORK WITH THE GRADING CONTRACTOR.
- ALL WATER SERVICE LINES THROUGHOUT THIS PROJECT SHALL HAVE BETWEEN 48" AND 60" OF COVER.

CONSTRUCTION NOTES:

- FULL DEPTH SAW CUT 1.0' (TYP.).

SITE LEGEND:

	8" KDOT MA-2 AIR ENTRAINED PCC 9" KDOT AB-3 AGGREGATE SUBGRADE SEE DETAIL SHEET C109	TYPE 1 CURB AND GUTTER
	2" KDOT BM-2 WEAR COURSE 7" KDOT BM-2 BASE COURSE 9" KDOT AB-3 AGGREGATE SUBGRADE SEE DETAIL SHEET C109	TYPE 2 CURB AND GUTTER
	4" GRAVEL/MULCH 6" COMPACTED SUBGRADE SEE DETAIL SHEET C109	



"PRIOR TO ANY CONSTRUCTION, THE OWNER/APPLICANT SHALL OBTAIN PERMISSION FROM THE OWNERS OF THE 'CITIES SERVICE 66' EASEMENT" AS SHOWN ON THE PLAT, FOR ALL WORK AND IMPROVEMENTS PROPOSED TO OCCUR WITHIN OR OVER THE EASEMENT AREAS. THIS INCLUDES, BUT IS NOT LIMITED TO, FENCES, PAVEMENT, CURBS, TUBE WHEEL STOPS, GRADING, LANDSCAPING, ETC."

BUILT PER PLAN

Gastinger Walker &
 Architects | Interior Designers | Construction Managers
 817 Wyandotte Kansas City Missouri 64105 816.421.8200 gastingerwalker.com

CIVIL
 Taliaferro & Browne, Inc
 1020 East 8th St.
 Kansas City, MO 64106
 816.283.3456
 STRUCTURAL
 Bob D. Campbell
 4338 Bellevue Ave.
 Kansas City, MO 64111
 816.531.4144
 M/E/P
 IMEG
 1600 Baltimore, Suite 300
 Kansas City, MO 64108
 761.842.8437

SAIA LTL Freight

Terminal Expansion and Remodel
 4525 South Palisade Ave.
 Wichita, KS 67217

SAIA LTL Freight
 11465 Johns Creek Parkway
 Johns Creek, GA 30097
 800.765.7242

ISSUED FOR:

Review 19 January 2022

FINAL PLAN SET

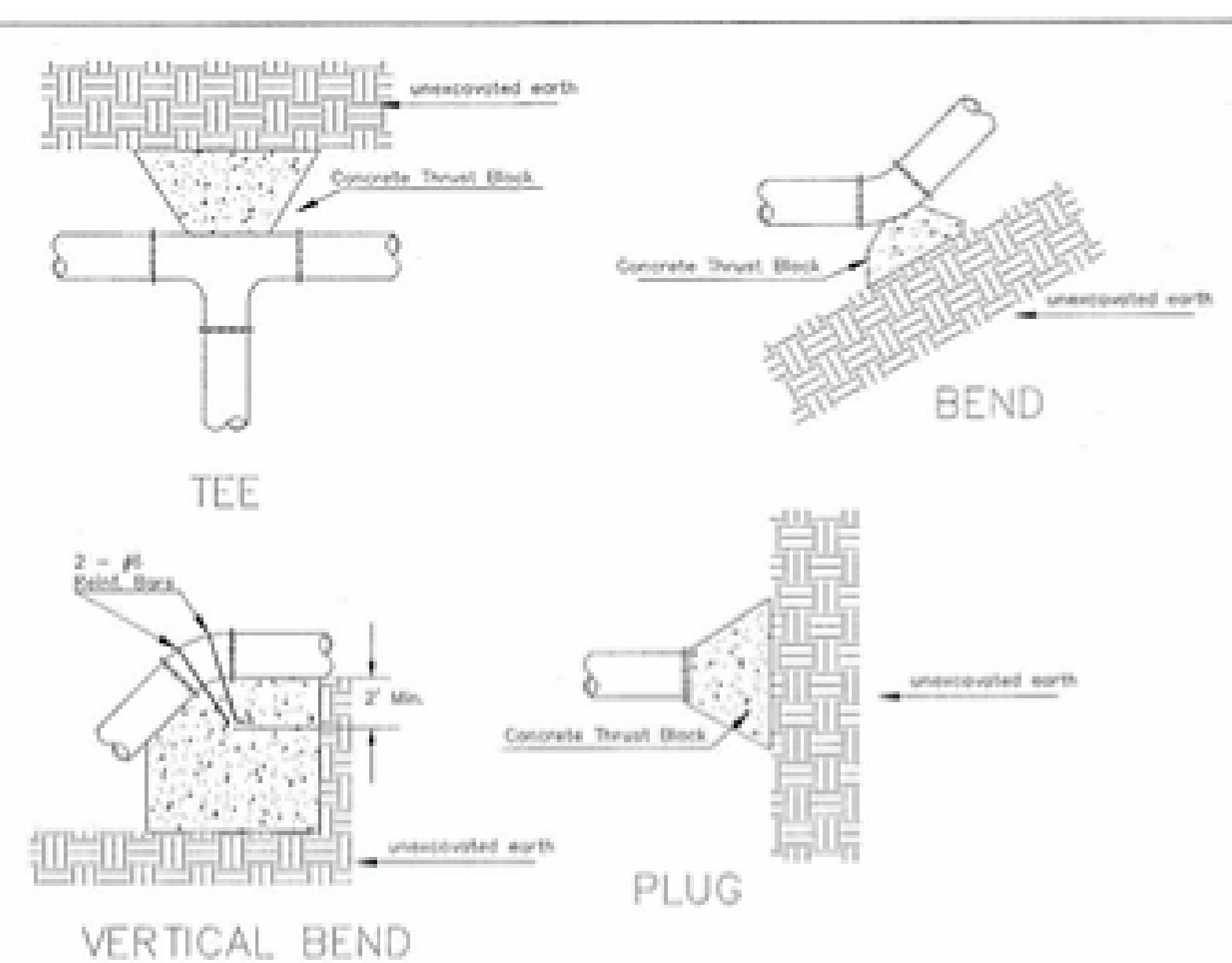


Drawn By TE/WB
 Checked By MN/LJG

SITE PLAN

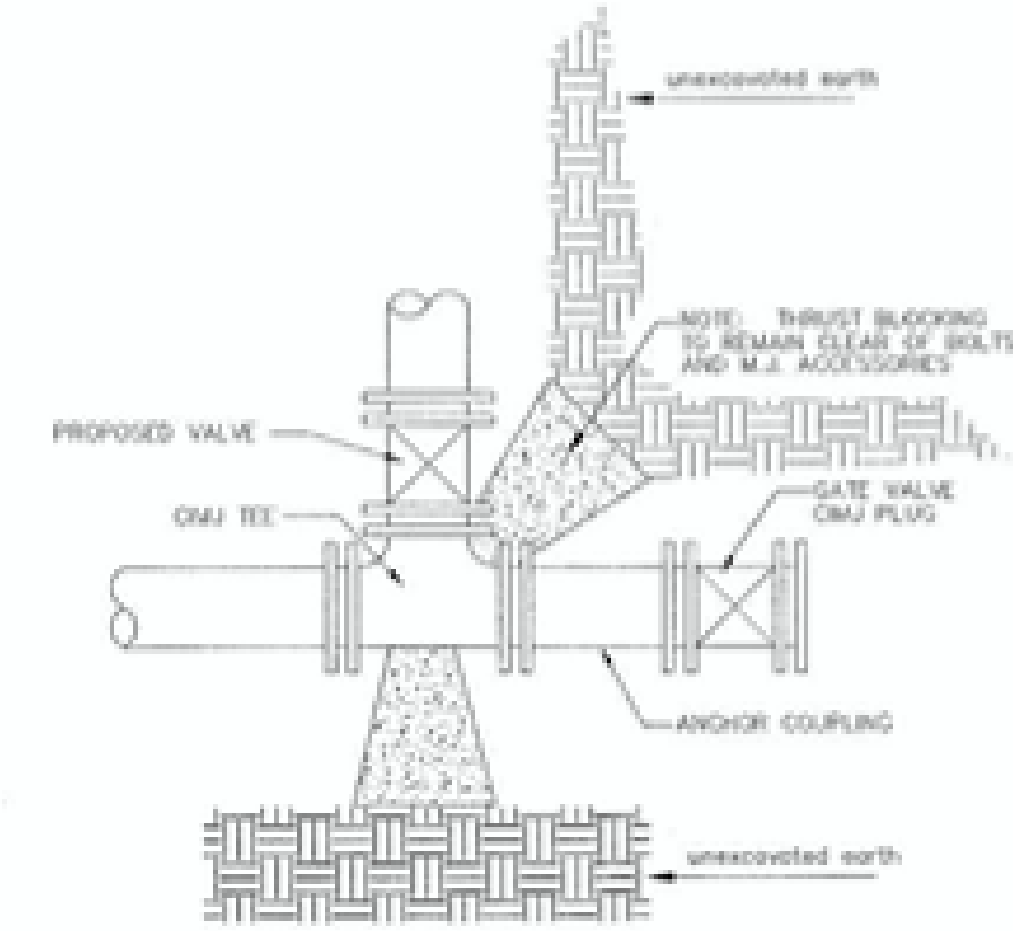
C-103

k:\net\pbz\72-1380\DESIGN\SITE\C103.dwg Feb 03, 2022 - 8:53am



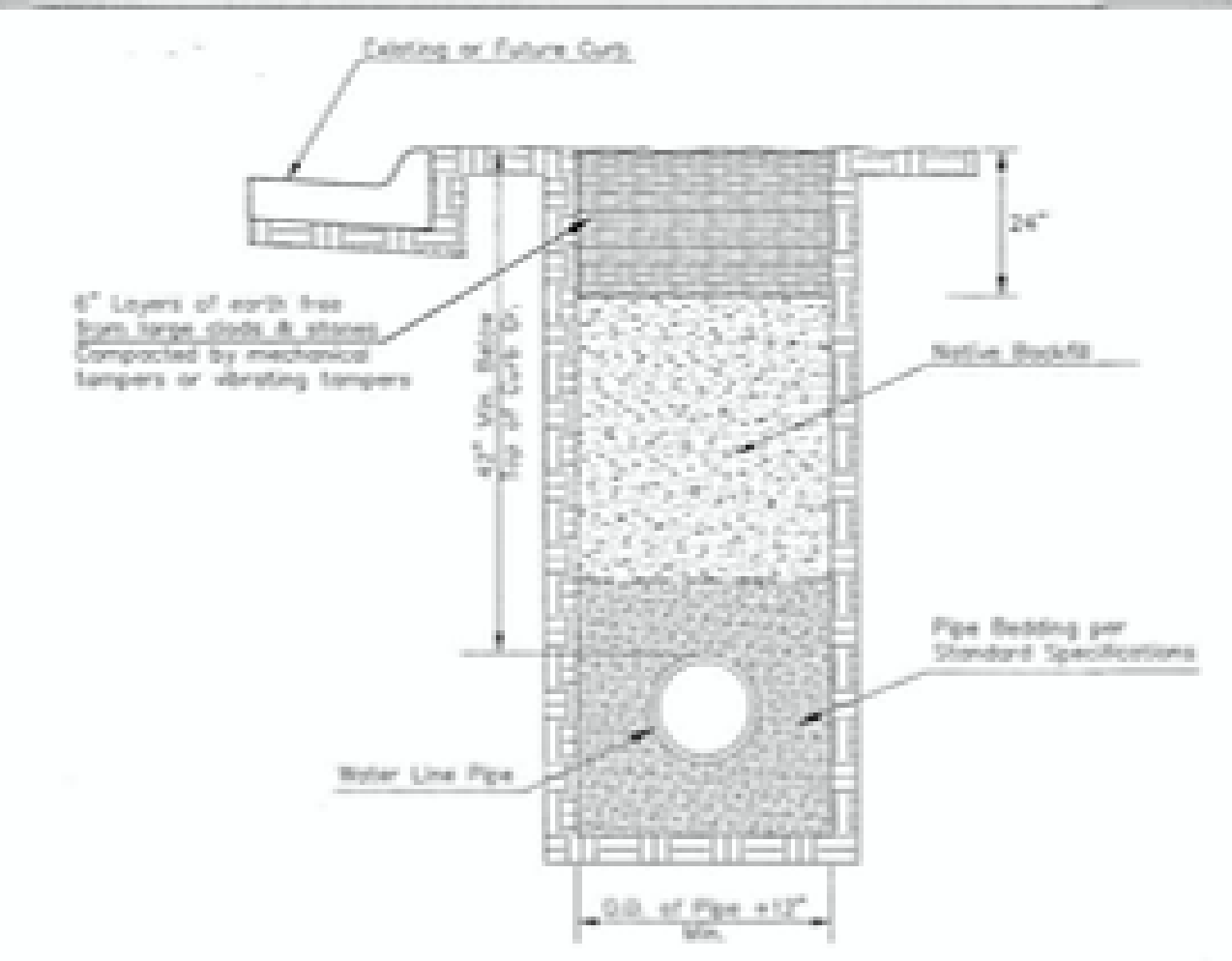
PIPE SIZE	PLUG	90°	45°	22 1/2°	11 1/4°	TEE
6"	2.8	3.95	2.95	1.09	.55	2.8
8"	4.9	6.95	3.75	1.90	.96	4.9
12"	11.4	16.1	8.75	4.45	2.25	11.4
16"	20.15	28.5	15.4	7.85	3.95	20.15
20"	31.15	44.0	23.85	12.15	6.10	31.15
24"	44.55	63.0	34.1	17.4	8.75	44.55

TYPICAL THRUST BLOCKS

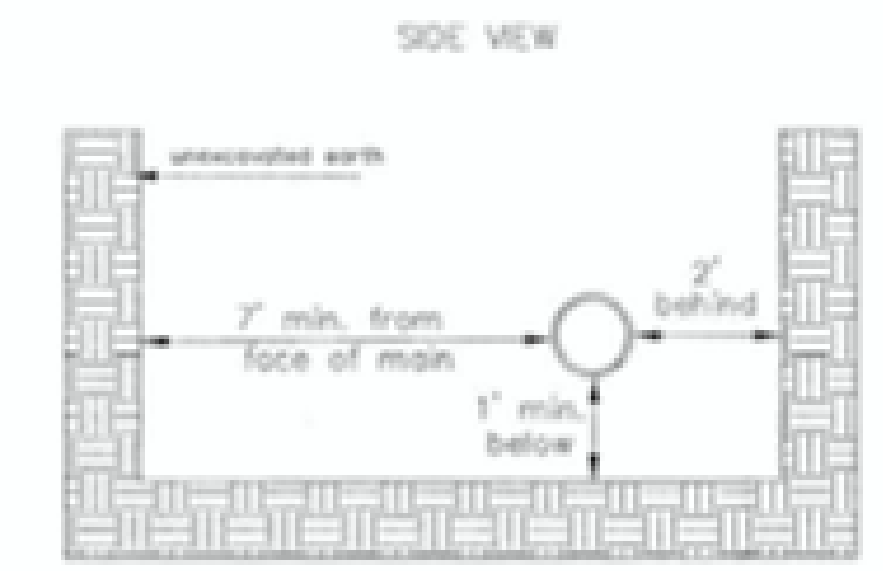


KEY BLOCK DETAIL

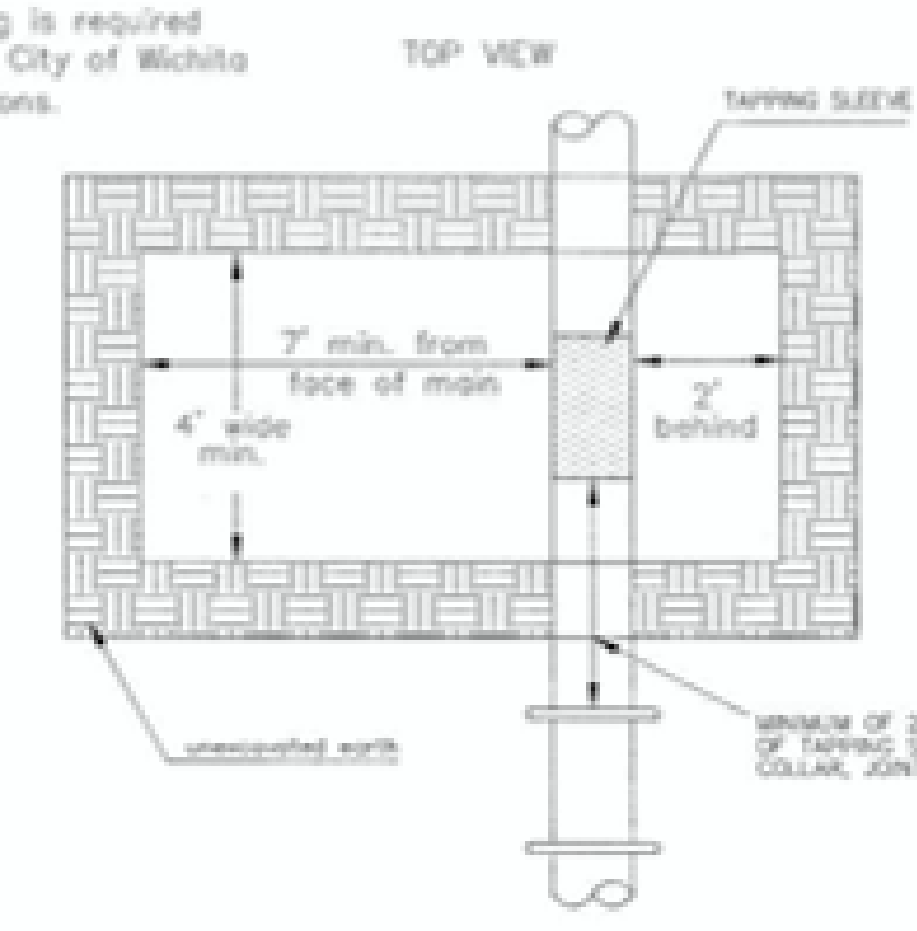
* PLANS GOVERN
UNLESS OTHERWISE NOTED ON PLANS



TRENCH COMPACTION IN ROAD RIGHT-OF-WAY



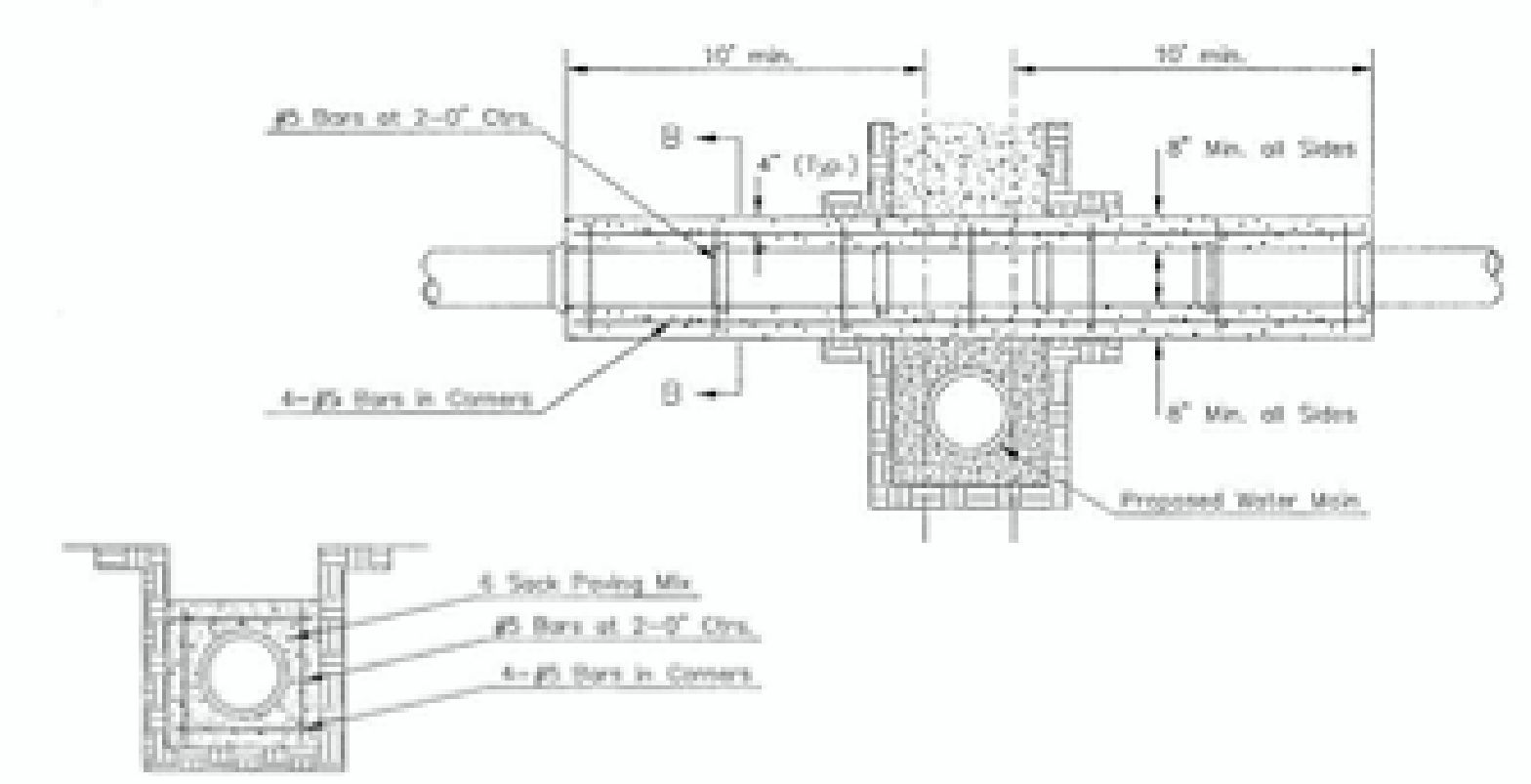
SIDE VIEW



TOP VIEW

Note: When shoring is required it is to be per The City of Wichita Standard Specifications.

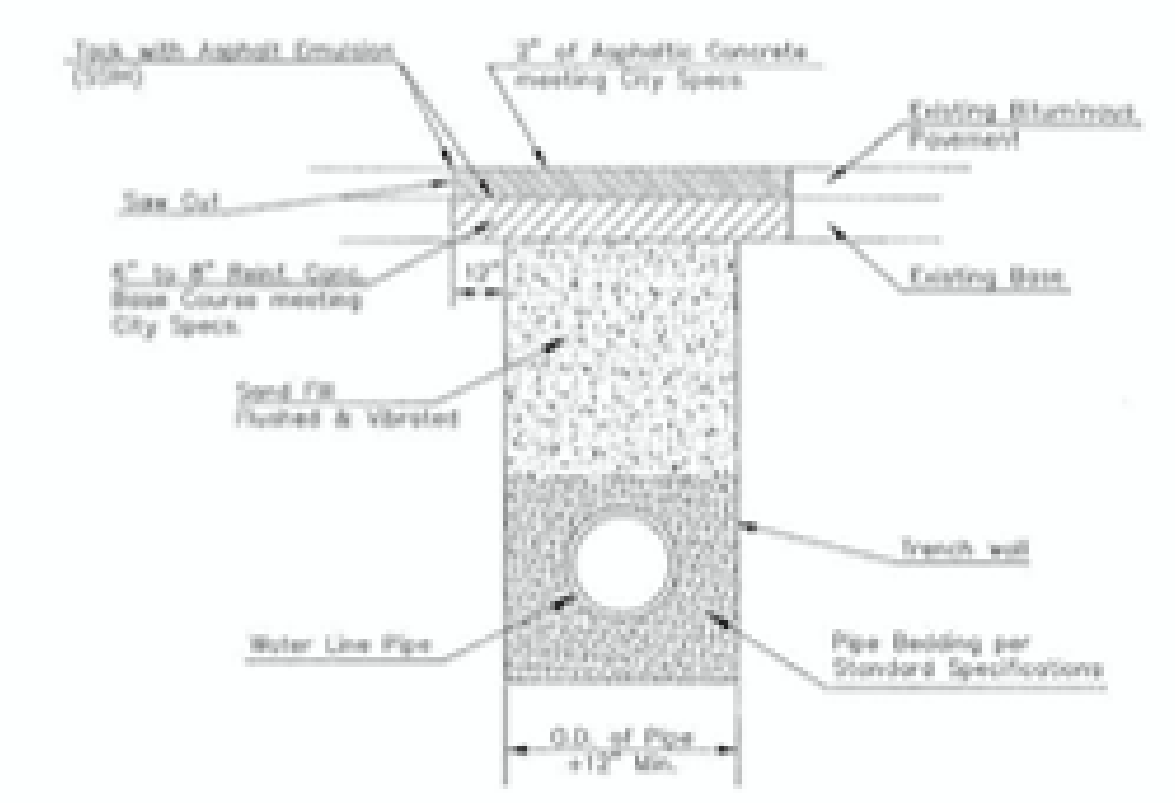
EXCAVATION FOR WET TAP



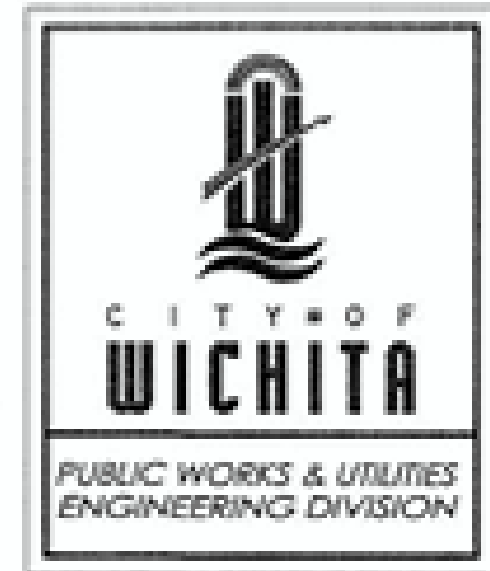
SECTION B-B

Note: Encasement to begin and end at a Bell on Sanitary Sewer Pipe.

REINFORCED CONCRETE ENCASEMENT OF SANITARY SEWER



PAVEMENT REPLACEMENT & TRENCH COMPACTION UNDER EXISTING AND PROPOSED CITY ROADS



MISCELLANEOUS WATER DETAILS		
CITY ENGINEER		
GARY JANZEN, P.E.		
PROJECT NUMBER	DCA NUMBER	DATE
CITY ENGINEER'S OFFICE		SHEET
CITY HALL - SEVENTH FLOOR 455 NORTH MAIN STREET WICHITA, KANSAS 67202-1480 (316) 268-4001		

WL-104

GastingerWalker &

Architects | Interior Designers | Construction Managers
817 Wyandotte | Kansas City, Missouri 64105 | 816.421.8200 | gastingenwalker.com

CIVIL
Taliaferro & Browne, Inc
1020 East 8th St.
Kansas City, MO 64106
816.283.3456
STRUCTURAL
Bob D. Campbell
4338 Bellevue Ave.
Kansas City, MO 64111
816.531.4144
M/E/P
IMEG
1600 Baltimore, Suite 300
Kansas City, MO 64108
761.842.8437

SAIA LTL Freight

Terminal Expansion and Remodel
4525 South Palisade Ave.
Wichita, KS 67217

SAIA LTL Freight
11465 Johns Creek Parkway
Johns Creek, GA 30097
800.765.7242

ISSUED FOR:
Review 19 January 2022

FINAL PLAN SET



Drawn By _____ TEWB
Checked By _____ MN/LJG

MISC WTR DETAILS

C-302