

GENERAL NOTES:

- Contractor will be required to provide notice to utility companies a minimum of seventy-two (72) hours prior to any excavation, as follows:
 Kansas One-Call 687-2470
 The Contractor must notify the following in case of an emergency:
 Cox Communications 262-4270
 Kansas Gas Service 1-888-482-4950
 Evergy 383-9650
 Black Hills 1-800-303-0357
 AT&T 268-2245
 City of Wichita Water Dept. 268-4563
 City of Wichita Sewer Maint. 268-4024
 City of Wichita Storm Sewer Maint. 268-4090
 City of Wichita Traffic Maint. 268-4034

- Utility service lines, poles, valve boxes, meters, and etcetera are to be adjusted as necessary by others prior to construction unless the plans specifically call for their adjustment by the Contractor or unless the plans specifically identify a utility to be adjusted by its owner during construction. Existing utilities and their location, as shown on the plans, represent the best information obtainable for design. The Contractor will be required to work around existing utilities within the right-of-way which do not conflict with proposed construction.

- Rubble from the removal of miscellaneous structures and excess excavation which is to be wasted shall be disposed of on sites to be provided by the Contractor. These sites shall be approved by the Engineer as to suitability, appearance and site location. Locations, in the opinion of the Engineer, that will leave an unsightly appearance will not be approved. All disposal sites must be approved by the Kansas Department of Health and Environment. Material either stockpiled or disposed of in a flood plain would require a Kansas State Board of Agriculture permit. Any material dumped in waters of the United States or wetlands is subject to U.S. Corps. of Engineers permitting regulations. Any material buried or stockpiled beyond approved construction limits would require additional archaeological investigations unless buried in a previously approved borrow location.

- Trees and shrubs in public right-of-way which are in direct conflict with proposed new construction shall be removed by the Contractor with the Engineer's approval. Trees and shrubs which are not in direct conflict with proposed new construction shall be saved and protected from damage.

- The Contractor shall give all property owners and/or tenants of developed property abutting the construction of this project a minimum of ten (10) days notice prior to start of construction.

- The Contractor shall be responsible for preserving property irons. The Contractor will be required to re-establish any property irons which are damaged or destroyed by his construction operations. Such irons shall be re-established by a licensed land surveyor in accordance with state laws.

- All existing and proposed erosion control measures including silt fencing, erosion control mat, straw bales, inlet barriers, and const. entrance shall be maintained throughout construction by the contractor and until project is accepted by the City of Wichita. The on-site engineer shall complete weekly reports on the status of erosion control measures. The contractor shall be required to comply with maintenance and/or replacement of erosion control measures as determined by the on-site engineer until project is accepted by City of Wichita. Maintenance and/or replacement of erosion control measures to be paid by L.S. bid item "Maintain Existing BMP's."

- All excess excavation shall remain on-site and shall be stockpiled or spread on Lots 64-69, Block A and Lots 1-5, Block D.

- The Contractor shall be responsible for maintaining continuous flow of sewage through construction. Contractor's proposed method for maintaining sewage flow shall be approved by the Engineer. Cost of maintaining flow of sewage through construction will not be paid for directly and this cost shall be considered as subsidiary to the other pay items of work.

- All areas within Reserve "D" & Reserve "E" disturbed during construction shall be seeded, mulched, and fertilized as follows:
 SEED -- Kansas Premium Fescue Blend; 8#/1000 Sq. Ft.
 Rye grass (PLS); 3#/1000 Sq. Ft. and
 FERTILIZER -- 12-24-12 Ratio at 350 Lbs./Ac.
 MULCH -- 2 Tons Prairie Hay / Acre
 All other disturbed areas are to be seeded as follows:
 SEED -- Rye grass (PLS)--5#/1000 Sq. Ft.
 All costs associated with seeding including mobilization, preparation of ground, seeding, fertilizing, mulching, etc. shall be included in the L.S. bid item "Seeding".

An additional bid item for "Seeding, Temporary" has been included and may be used at the discretion of the Design Engineer. Temporary seed shall be Annual Rye at 5 Lbs./1000 Sq. Ft. unless otherwise noted and shall be planted when permanent seed or sod cannot be used due to seasonal limitations. All areas disturbed during construction shall be seeded as follows:

- Trees and shrubs in the work area which are in direct conflict with proposed new construction shall be removed by the Contractor ONLY with the Developer or Baughman Company approval. Trees and shrubs which are not in direct conflict with proposed new construction shall be saved and protected from damage. If trimming is necessary, a chainsaw shall be used. Breaking limbs with equipment will not be allowed. An on-site pre-construction meeting will occur prior to any construction to discuss tree removal, tree protection, and tree trimming.

- Sales tax exemption does not apply to this project.

- The Developer for this project is Jay Russell. P.O. Box 75337, Wichita, KS 67272 PH# (316) 990-2105 Email j@jussellco.com

SANITARY SEWER IMPROVEMENTS

to serve

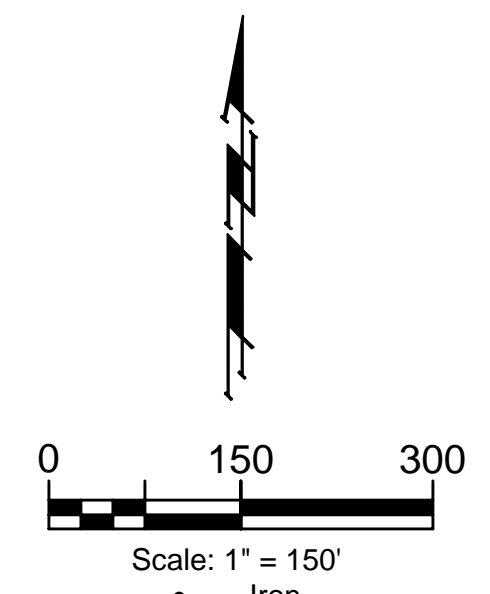
SCHULTE-JOHNSON 2ND ADDITION - PH. II

CITY OF WICHITA, KANSAS

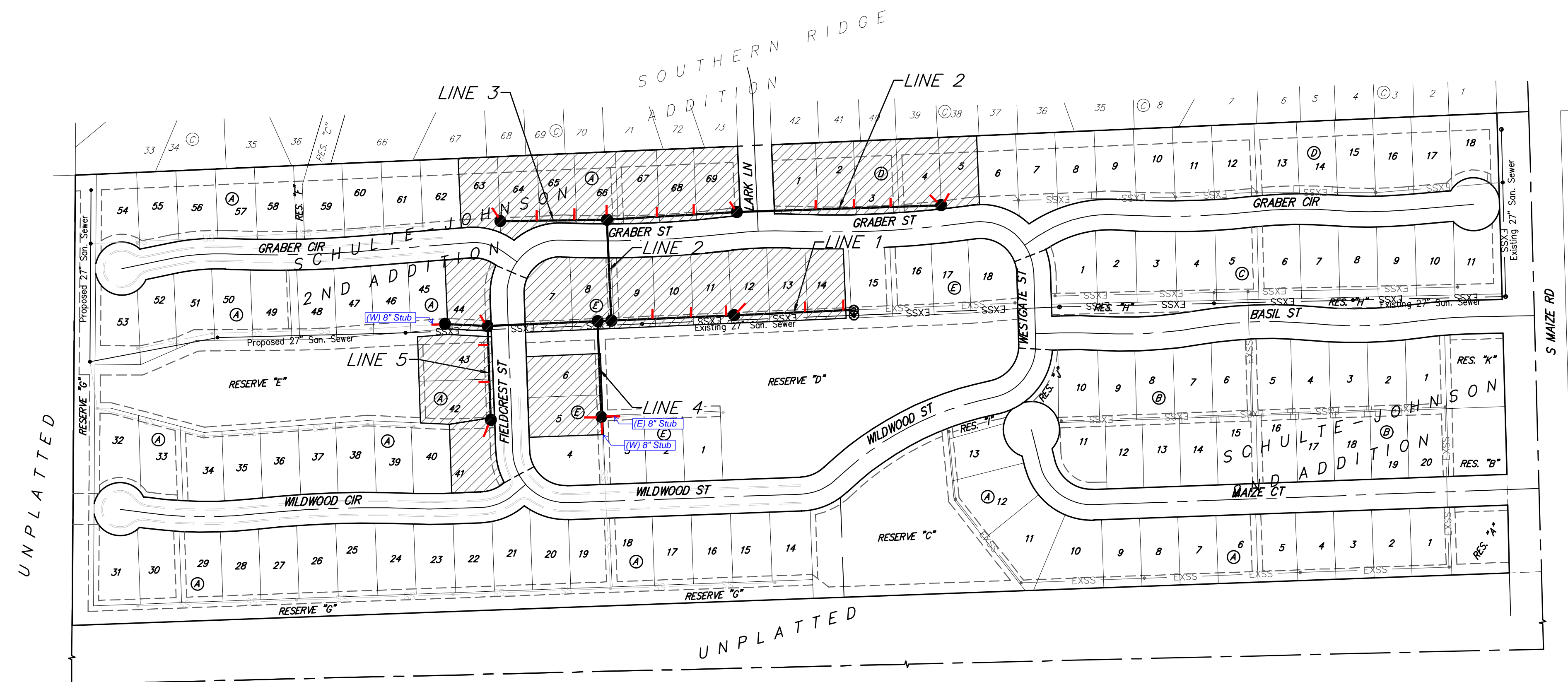
Gary Janzen, P.E. City Engineer
 Project Number: 468-2019-009469
 Org Code Number: 47265419
 Munis Number: E1934

SHEET INDEX

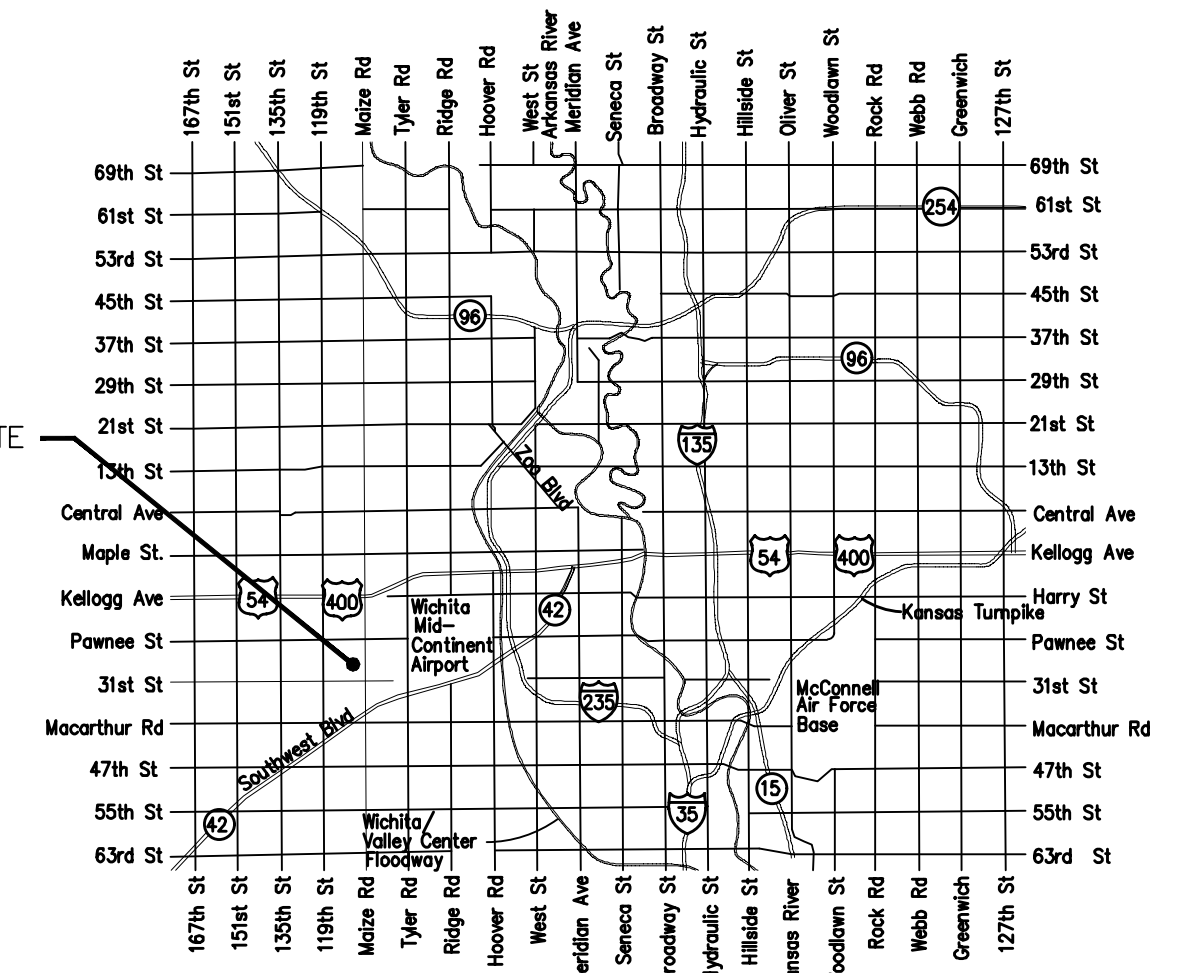
Title Sheet	1
Line 1	2
Line 2	3
Line 3	4
Lines 4 & 5	5
Erosion Control Plan	6
Erosion Control BMP Details	7-11
Standard Manhole Detail	12
Frame & Cover Detail	13
Vertical Riser Detail	14
Coordinate Sheet	15
Copy of Plat	16



Mies Construction - Contractor
 K. Kerns - City of Wichita, Field Project Engineer
 S. Stripling - City of Wichita, Inspector
 As-Built
 Stubs & Risers
 Release Date (for connection purposes only): 3/16/2022
 : pdf: 9/29/2022 apr



BENEFIT DISTRICT



BENCHMARKS

CUT OFF 'T'-POST, DOWN 0.25'
 13.5' WEST OF POWER POLE
 30' SOUTH OF FIRE HYDRANT
 +/- 200' SOUTH OF CENTERLINE
 DRIVE TO HOUSE # 2816 S MAIZE RD.
 ELEV. = 1328.386 (NAVD 88)

SQUARE CUT WITH + IN SW WINGWALL
 OF THE SOUTHERNMOST OF THREE
 CONCRETE DITCH CHECKS
 +/- 1125' WEST OF CENTERLINE S.
 MAIZE RD, BEHIND HOUSE #2951 S
 MAIZE RD.
 ELEV. = 1332.383 (NAVD88)

APPROVED AS NOTED
 BY WICHITA PUBLIC WORKS ENGINEERING
 Engineering 6/13/22
 An approved copy of these plans signed by City staff are required on-site.

Revised project numbers (01/11/22) January 11, 2022

BAUGHMAN COMPANY
 315 Ellis St. Wichita, KS 67211 316-262-7271
 BaughmanCo.com



E:\Projects\Schulte-Johnson 2nd Addition\Engineering\Phase 2\SS 21-08-15081\SS Plans.dwg

BENCHMARKS:
 CUT OFF "T"-POST, DOWN 0.25'
 13.5' WEST OF POWER POLE
 30' SOUTH OF FIRE HYDRANT
 +/- 200' SOUTH OF CENTERLINE
 DRIVE TO HOUSE # 2816 S MAIZE RD.
 ELEV. = 1328.386 (NAVD 88)

SQUARE CUT WITH + IN SW WINGWALL
 OF THE SOUTHERNMOST OF THREE
 CONCRETE DITCH CHECKS
 +/- 1125' WEST OF CENTERLINE S.
 MAIZE RD, BEHIND HOUSE #2951 S
 MAIZE RD.
 ELEV. = 1332.383 (NAVD88)

SCHULTE-JOHNSON
 2ND ADDITION

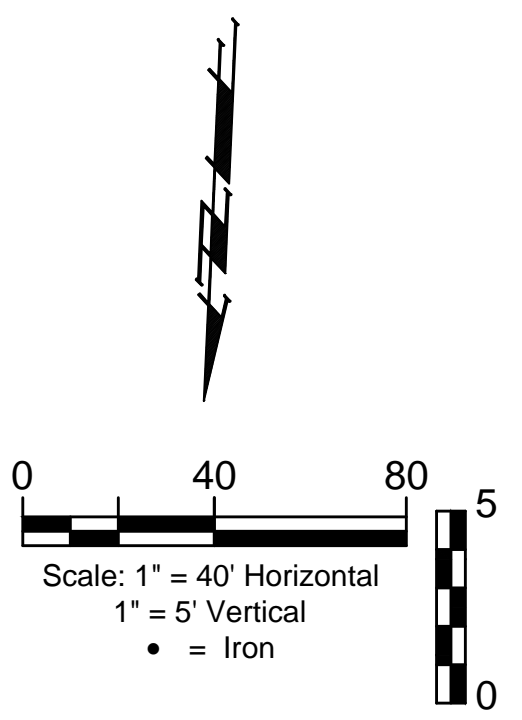
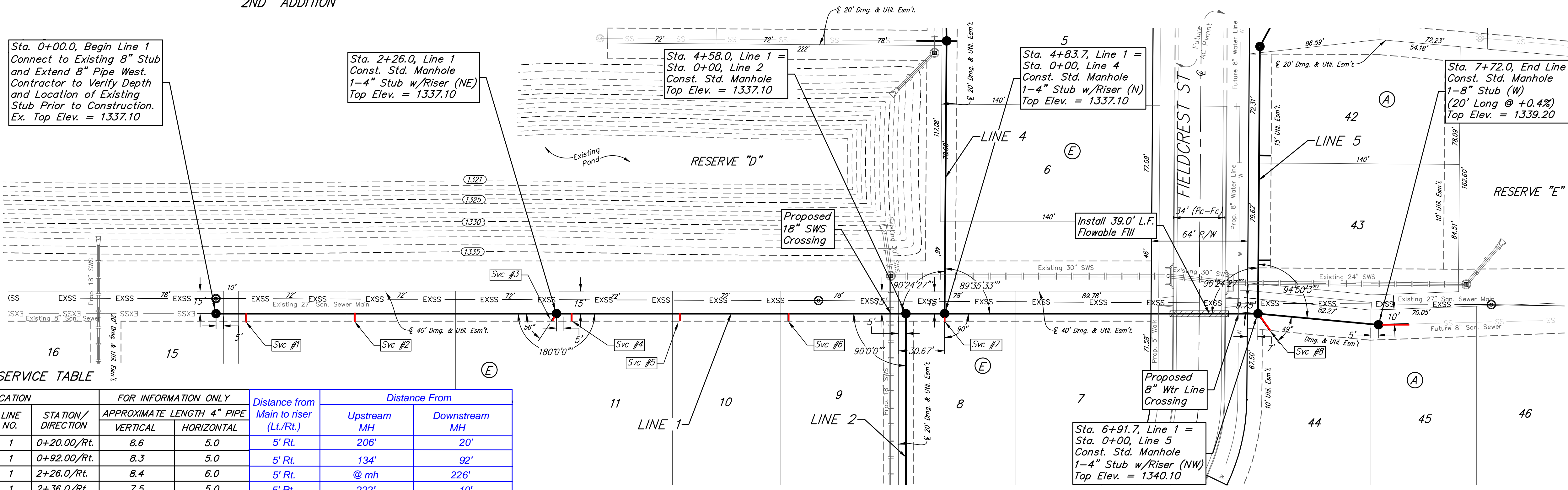
Sta. 0+00.0, Begin Line 1
 Connect to Existing 8" Stub
 and Extend 8" Pipe West.
 Contractor to Verify Depth
 and Location of Existing
 Stub Prior to Construction.
 Ex. Top Elev. = 1337.10

Sta. 2+26.0, Line 1
 Const. Std. Manhole
 1-4" Stub w/Riser (NE)
 Top Elev. = 1337.10

Sta. 4+58.0, Line 1 =
 Sta. 0+00, Line 2
 Const. Std. Manhole
 Top Elev. = 1337.10

Sta. 4+83.7, Line 1 =
 Sta. 0+00, Line 4
 Const. Std. Manhole
 1-4" Stub w/Riser (N)
 Top Elev. = 1337.10

Sta. 7+72.0, End Line 1
 Const. Std. Manhole
 1-8" Stub (W)
 (20' Long @ +0.4%)
 Top Elev. = 1339.20



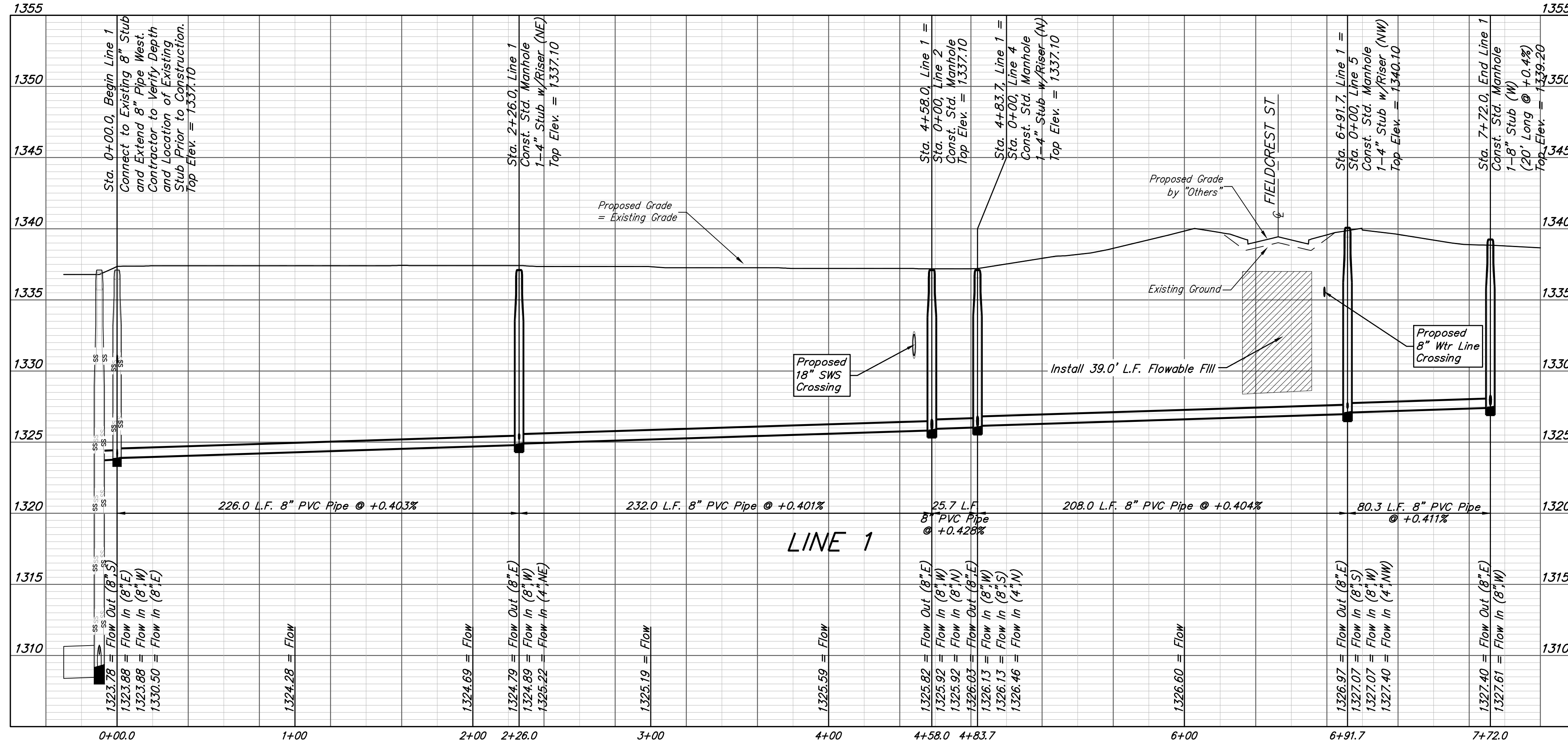
SEWER SERVICE TABLE

NUMBER	TYPE	LOCATION			FOR INFORMATION ONLY		Distance From			
		LOT NO.	BLOCK NO.	LINE NO.	STATION/DIRECTION	APPROXIMATE LENGTH 4" PIPE	Distance from Main to riser (Lt./Rt.)	Upstream MH	Downstream MH	
1	8" X 4" Tee	14	E	1	0+20.00/Rt.	8.6	5.0	5' Rt.	206'	20'
2	8" X 4" Tee	13	E	1	0+92.00/Rt.	8.3	5.0	5' Rt.	134'	92'
3	4" Stub	12	E	1	2+26.0/Rt.	8.4	6.0	5' Rt.	@ mh	226'
4	8" X 4" Tee	11	E	1	2+36.0/Rt.	7.5	5.0	5' Rt.	222'	10'
5	8" X 4" Tee	10	E	1	3+08.00/Rt.	7.1	5.0	5' Rt.	150'	82'
6	8" X 4" Tee	9	E	1	3+80.00/Rt.	6.7	5.0	5' Rt.	78'	154'
7	4" Stub	8	E	1	4+83.70/Rt.	6.8	5.0	5' Rt.	@ mh	26'
8	4" Stub	44	A	1	6+91.70/Rt.	8.5	13.6	13.6' Rt.	@ mh	208'

NOTE: Vertical Riser Pipe shall be extended to 2' minimum above ground water elevation and 4' maximum below proposed ground elevation.

SCHULTE-JOHNSON
 2ND ADDITION

NOTE: Maintain 10 ft. of horizontal separation (outside dimension to outside dimension) between the water lines and sanitary sewer lines.



BAUGHMAN COMPANY
 315 Ellis St.
 Wichita, KS 67211
 316-262-7271
 BaughmanCo.com

SCHULTE-JOHNSON 2ND ADD. - PHASE II

LINE 1

SANITARY SEWER IMPROVEMENTS

PROJECT NUMBER:
 468-2019-009469

DESIGN: AEG DRAWN: HWJ

DATE: December 23, 2021

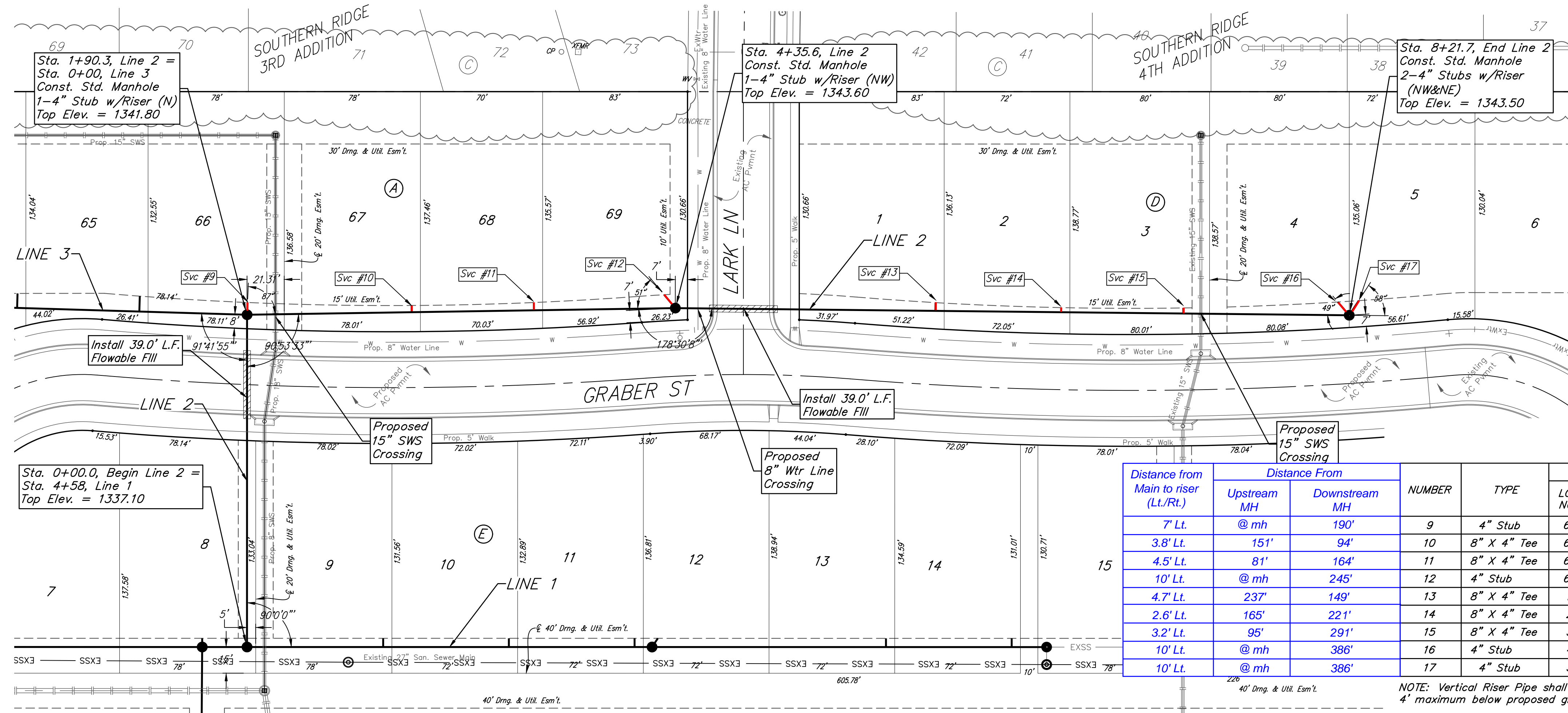
SHEET OF
 2 16

File: E:\Projects\Schulte-Johnson\2nd Addition\Engineering\Phase 2\SS_21-08-E991\SS Plans.dwg

BENCHMARKS:
 CUT OFF "T"-POST, DOWN 0.25'
 13.5' WEST OF POWER POLE
 30' SOUTH OF FIRE HYDRANT
 +/- 200' SOUTH OF CENTERLINE
 DRIVE TO HOUSE # 2816 S MAIZE RD.
 ELEV. = 1328.386 (NAVD 88)

SQUARE CUT WITH + IN SW WINGWALL
 OF THE SOUTHERNMOST OF THREE
 CONCRETE DITCH CHECKS
 +/- 1125' WEST OF CENTERLINE S.
 MAIZE RD, BEHIND HOUSE #2951 S
 MAIZE RD.
 ELEV. = 1332.383 (NAVD88)

SCHULTE-JOHNSON
 2ND ADDITION



SCHULTE-JOHNSON
 2ND ADDITION

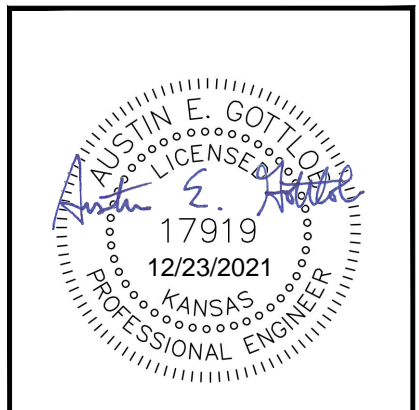
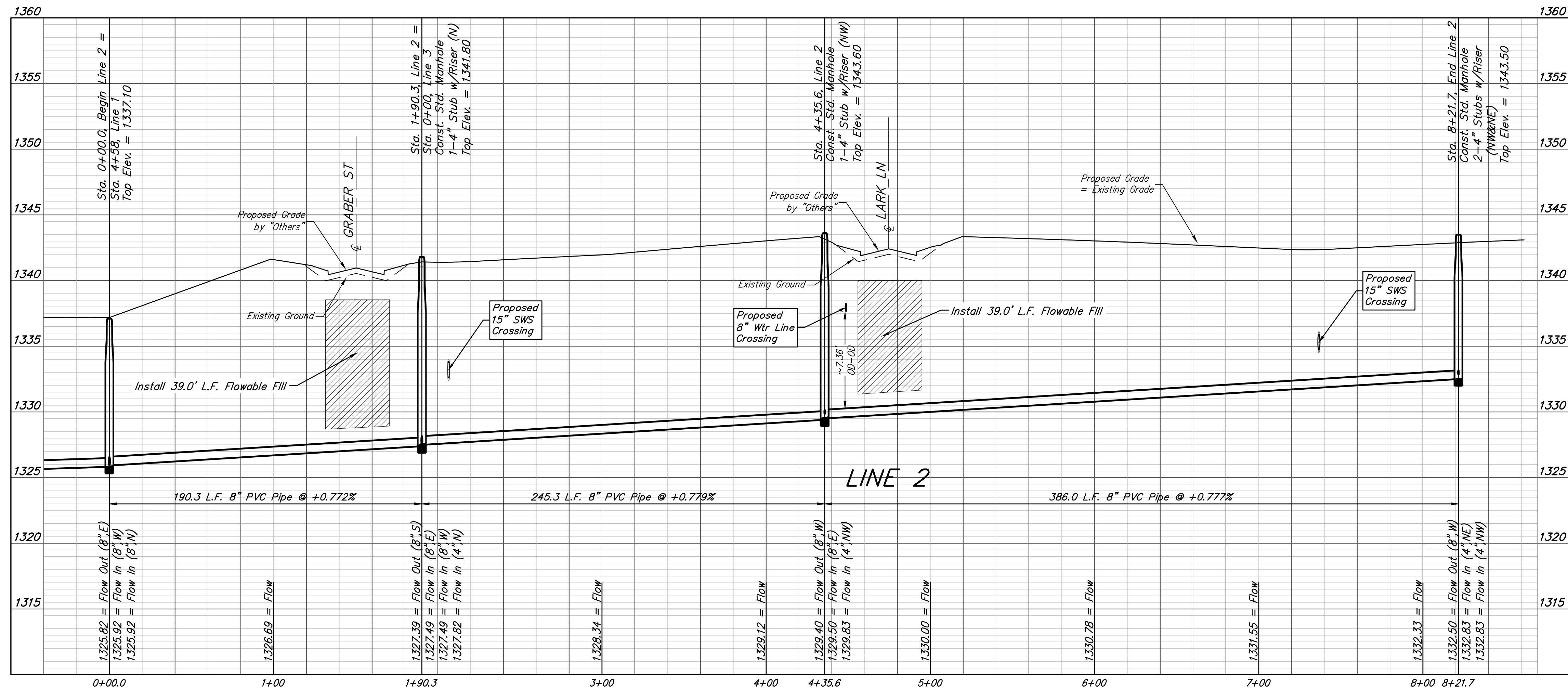
SEWER SERVICE TABLE

Distance from Main to riser (Lt./Rt.)	Distance From		NUMBER	TYPE	LOCATION			FOR INFORMATION ONLY		
	Upstream MH	Downstream MH			LOT NO.	BLOCK NO.	LINE NO.	STATION/DIRECTION	APPROXIMATE LENGTH 4" PIPE	VERTICAL
7' Lt.	@ mh	190'	9	4" Stub	66	A	2	1+90.30/Lt.	9.6	7.0
3.8' Lt.	151'	190'	10	8" X 4" Tee	67	A	2	2+84.6/Lt.	8.6	3.8
4.5' Lt.	81'	164'	11	8" X 4" Tee	68	A	2	3+54.6/Lt.	8.8	4.5
10' Lt.	@ mh	245'	12	4" Stub	69	A	2	4+35.6/Lt.	9.9	10.0
4.7' Lt.	237'	149'	13	8" X 4" Tee	1	D	2	5+84.6/Lt.	7.4	4.7
2.6' Lt.	165'	221'	14	8" X 4" Tee	2	D	2	6+56.7/Lt.	6.5	2.6
3.2' Lt.	95'	291'	15	8" X 4" Tee	3	D	2	7+26.6/Lt.	5.6	3.2
10' Lt.	@ mh	386'	16	4" Stub	4	D	2	8+21.7/Lt.	6.3	10.0
10' Lt.	@ mh	386'	17	4" Stub	5	D	2	8+21.7/Lt.	6.1	10.0

NOTE: Vertical Riser Pipe shall be extended to 2' minimum above ground water elevation and 4' maximum below proposed ground elevation.

NOTE: Maintain 10 ft. of horizontal separation (outside dimension to outside dimension) between the water lines and sanitary sewer lines.

All trench and manhole excavation areas from Sta. 1+90.3 to Sta. 8+21.7, Line 2, excluding 39.0 L.F. Flowable Fill, shall be backfilled with sand. The sand backfill shall be water-jetted and vibrated during backfilling. All costs shall be paid for as L.F. "Fill, Sand (Flushed & Vibrated)".



BAUGHMAN COMPANY
 315 Ellis St.
 Wichita, KS 67211
 316-262-7271
 BaughmanCo.com

SCHULTE-JOHNSON 2ND
 ADD. - PHASE II

LINE 2

SANITARY SEWER
 IMPROVEMENTS

PROJECT NUMBER:
 468-2019-009469

DESIGN: AEG DRAWN: HWJ

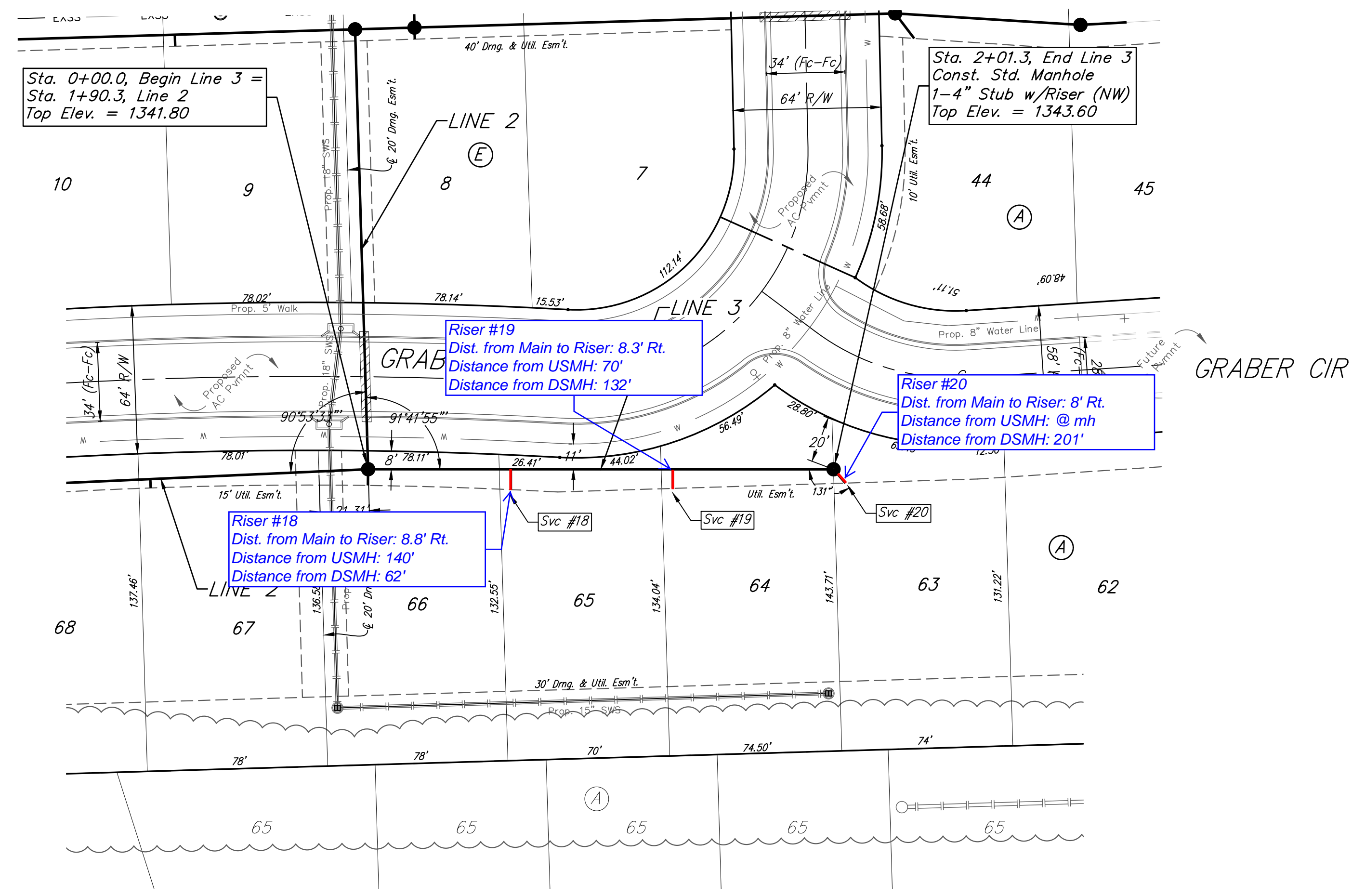
DATE: December 23, 2021

SHEET **3** OF **16**

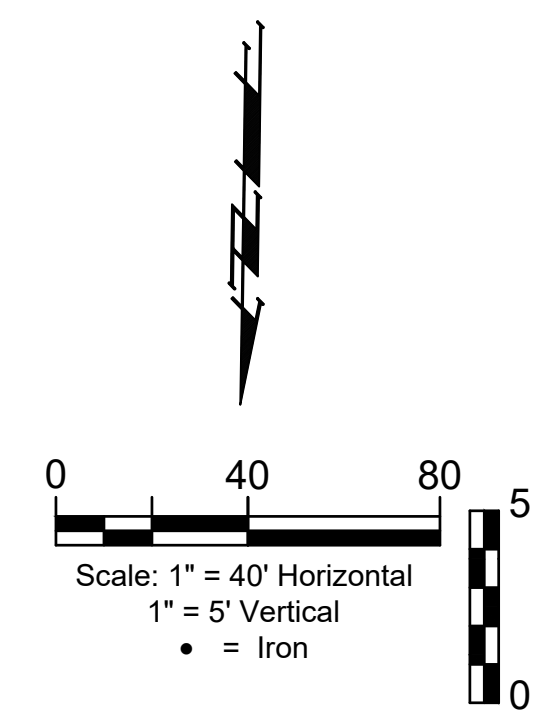
File: E:\Projects\Schulte-Johnson 2nd Addition\Engineering\Phase 2\SS 21-08-E99\ISS Plans.dwg

BENCHMARKS:
 CUT OFF "T"-POST, DOWN 0.25'
 13.5' WEST OF POWER POLE
 30' SOUTH OF FIRE HYDRANT
 +/- 200' SOUTH OF CENTERLINE
 DRIVE TO HOUSE # 2816 S MAIZE RD.
 ELEV. = 1328.386 (NAVD 88)

SQUARE CUT WITH + IN SW WINGWALL
 OF THE SOUTHERNMOST OF THREE
 CONCRETE DITCH CHECKS
 +/- 1125' WEST OF CENTERLINE S.
 MAIZE RD, BEHIND HOUSE #2951 S
 MAIZE RD.
 ELEV. = 1332.383 (NAVD88)



SCHULTE-JOHNSON
 2ND ADDITION



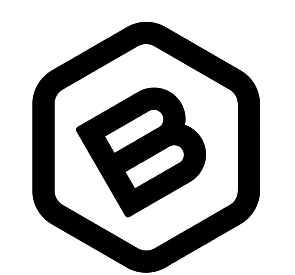
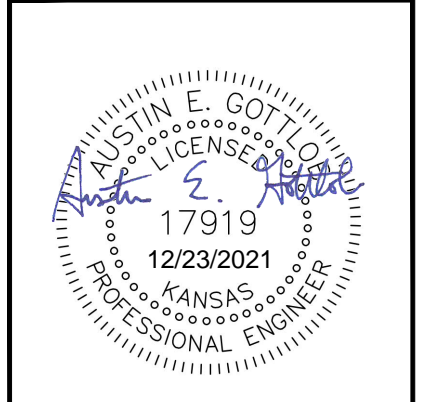
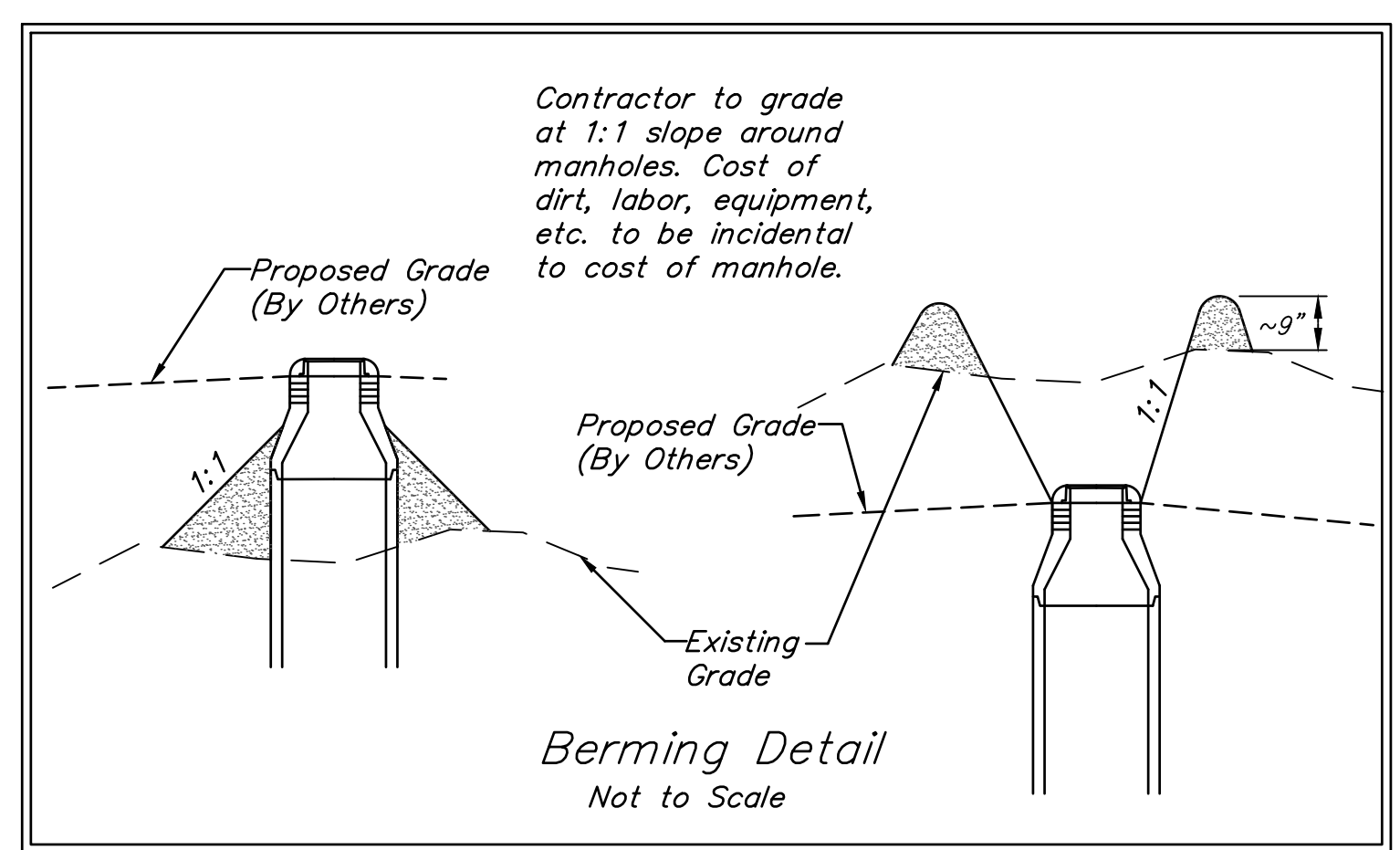
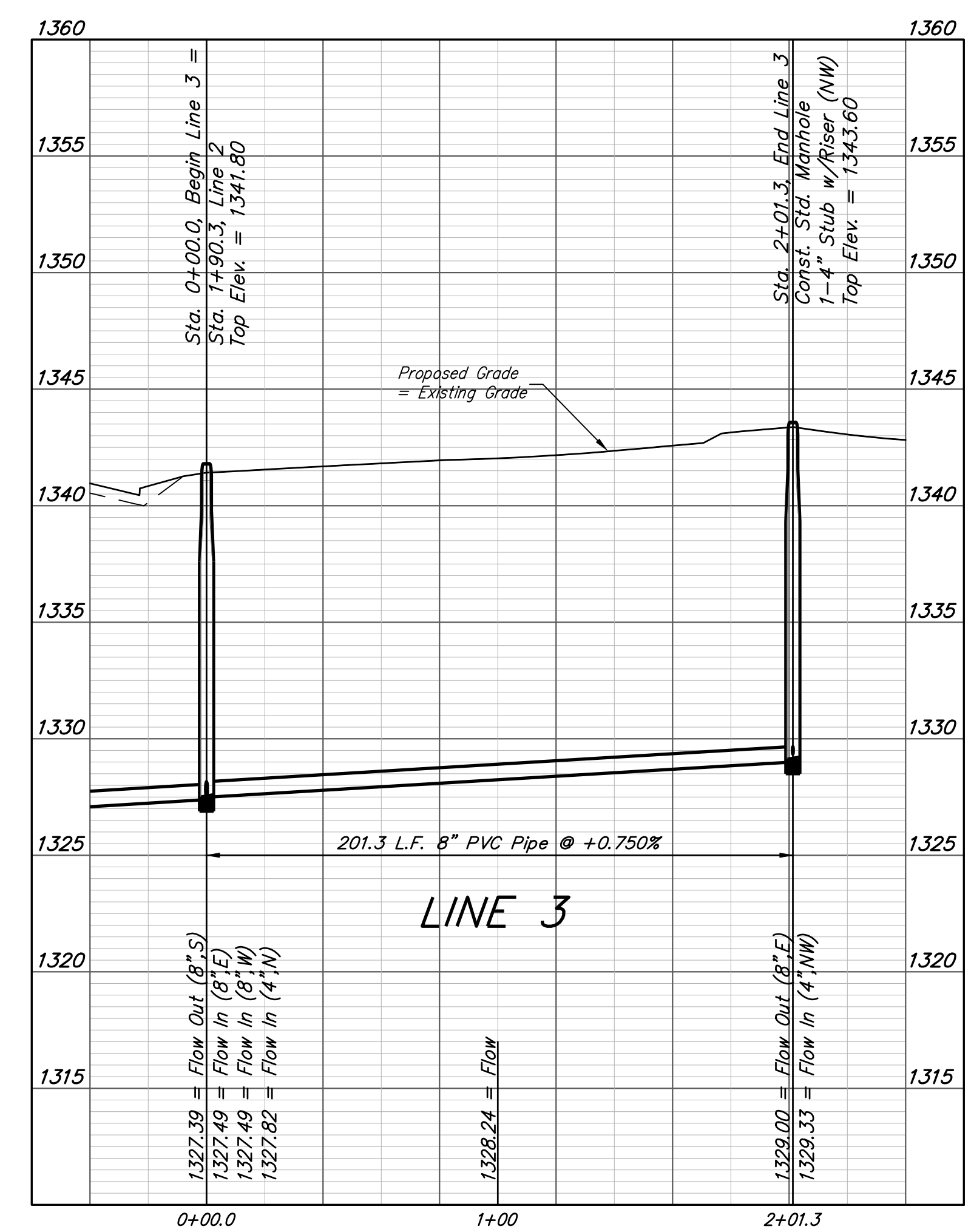
All trench and manhole excavation areas from Sta. 0+00.0 to Sta. 2+01.3, Line 3 shall be backfilled with sand. The sand backfill shall be water-jetted and vibrated during backfilling. All costs shall be paid for as L.F. "Fill, Sand (Flushed & Vibrated)".

NOTE: Maintain 10 ft. of horizontal separation (outside dimension to outside dimension) between the water lines and sanitary sewer lines.

SEWER SERVICE TABLE

NUMBER	TYPE	LOCATION				FOR INFORMATION ONLY	
		LOT NO.	BLOCK NO.	LINE NO.	STATION/DIRECTION	APPROXIMATE LENGTH 4" PIPE	
18	8" X 4" Tee	65	A	3	0+61.7/Rt.	8.7	8.8
19	8" X 4" Tee	64	A	3	1+31.7/Rt.	8.4	8.3
20	4" Stub	63	A	3	2+01.3/Rt.	9.2	8.0

NOTE: Vertical Riser Pipe shall be extended to 2' minimum above ground water elevation and 4' maximum below proposed ground elevation.



BAUGHMAN COMPANY
 315 Ellis St.
 Wichita, KS 67211
 316-262-7271
 BaughmanCo.com

SCHULTE-JOHNSON 2ND
 ADD. - PHASE II

LINE 3

SANITARY SEWER
 IMPROVEMENTS

PROJECT NUMBER:
 468-2019-009469

DESIGN: AEG DRAWN: HJW

DATE: December 23, 2021

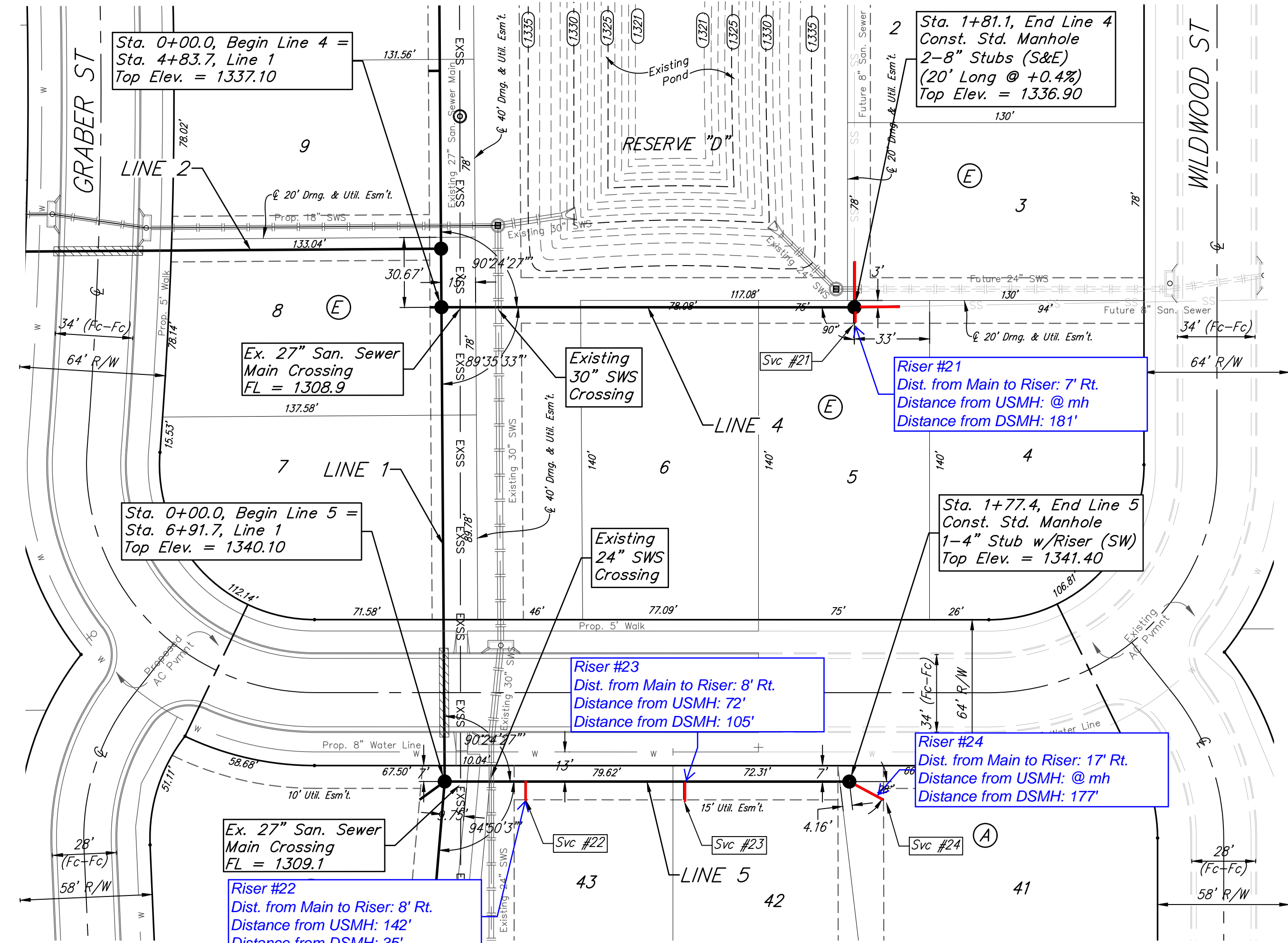
SHEET **4** OF **16**

File: E:\Projects\Schulte-Johnson 2nd Addition\Engineering\Phase 2\SS_21-08-E99\ISS Plans.dwg

BENCHMARKS:
 CUT OFF "T"-POST, DOWN 0.25'
 13.5' WEST OF POWER POLE
 30' SOUTH OF FIRE HYDRANT
 +/- 200' SOUTH OF CENTERLINE
 DRIVE TO HOUSE # 2816 S MAIZE RD.
 ELEV. = 1328.386 (NAVD 88)

SQUARE CUT WITH + IN SW WINGWALL
 OF THE SOUTHERNMOST OF THREE
 CONCRETE DITCH CHECKS
 +/- 1125' WEST OF CENTERLINE S.
 MAIZE RD, BEHIND HOUSE #2951 S
 MAIZE RD.
 ELEV. = 1332.383 (NAVD88)

**SCHULTE-JOHNSON
 2ND ADDITION**



**SCHULTE-JOHNSON
 2ND ADDITION**

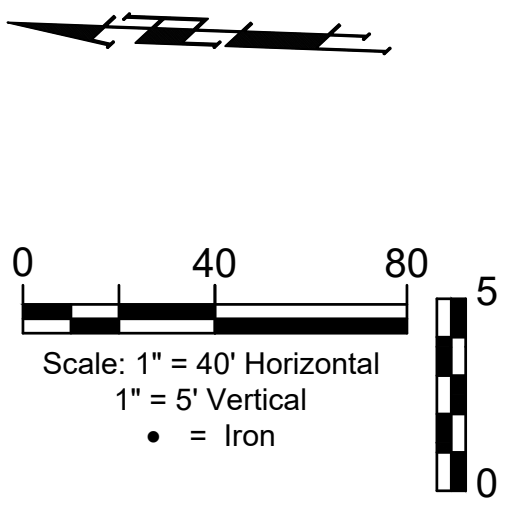
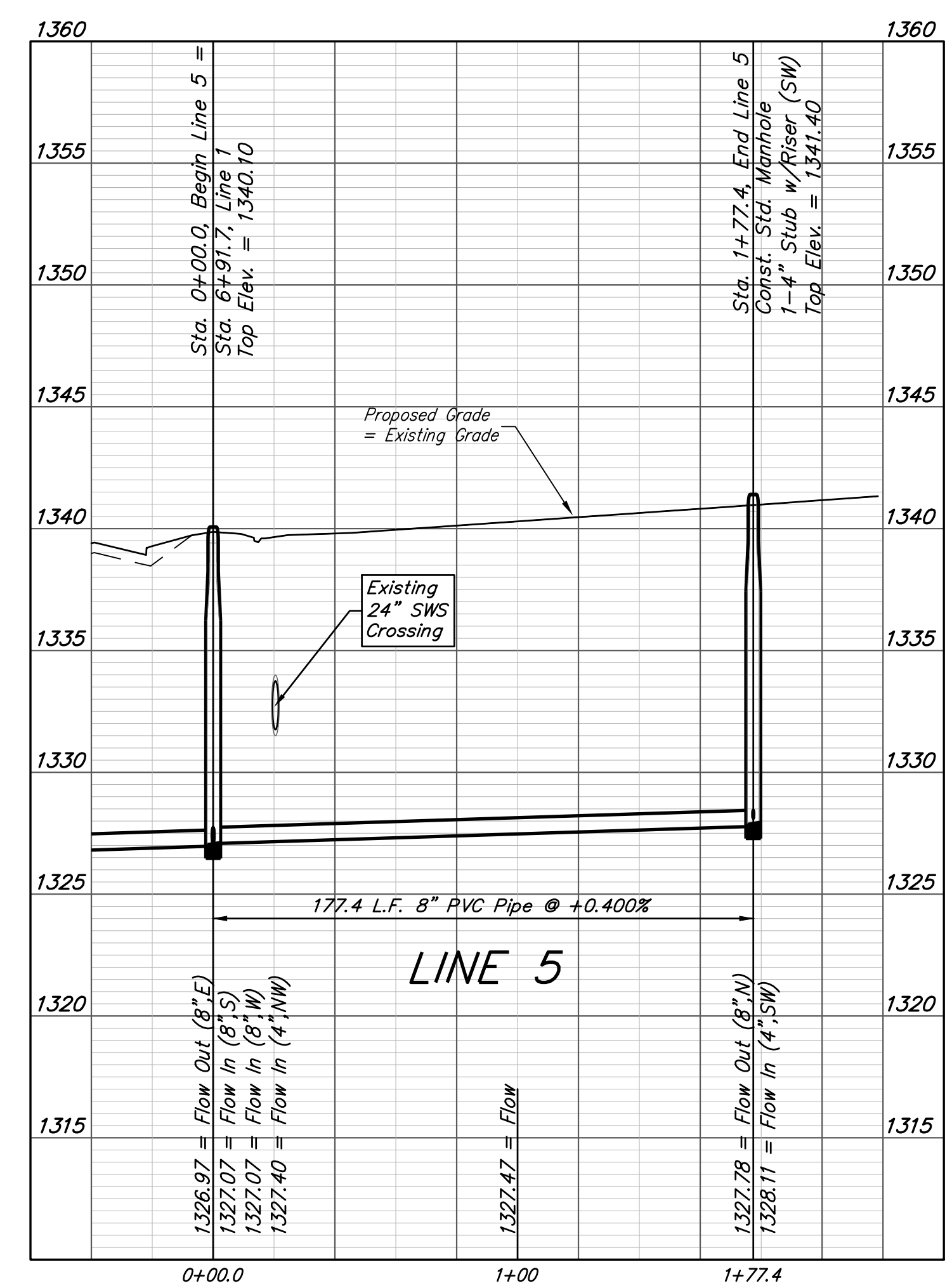
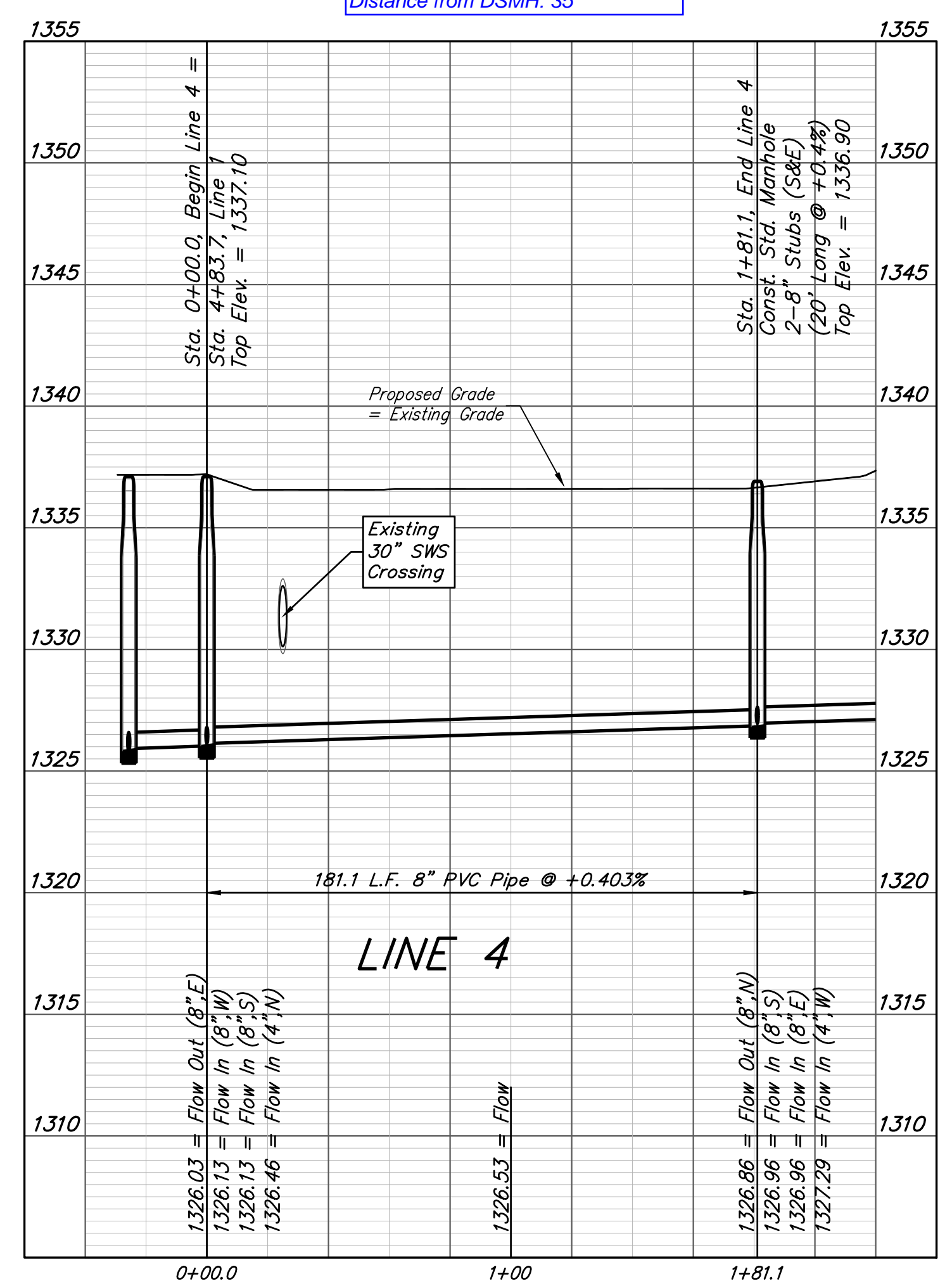
All trench and manhole excavation areas from Sta. 0+20.0 to Sta. 1+77.4, Line 5 shall be backfilled with sand. The sand backfill shall be water-jetted and vibrated during backfilling. All costs shall be paid for as L.F. "Fill, Sand (Flushed & Vibrated)".

NOTE: Maintain 10 ft. of horizontal separation (outside dimension to outside dimension) between the water lines and sanitary sewer lines.

SEWER SERVICE TABLE

NUMBER	TYPE	LOCATION				FOR INFORMATION ONLY	
		LOT NO.	BLOCK NO.	LINE NO.	STATION/DIRECTION	APPROXIMATE LENGTH 4" PIPE VERTICAL	HORIZONTAL
21	4" Stub	5	E	4	1+81.1/Rt.	5.5	7.0
22	8" X 4" Tee	43	A	5	0+35.5/Rt.	7.6	8.0
23	8" X 4" Tee	42	A	5	1+05.1/Rt.	7.8	8.0
24	4" Stub	41	A	5	1+77.4/Rt.	8.8	17.0

NOTE: Vertical Riser Pipe shall be extended to 2' minimum above ground water elevation and 4' maximum below proposed ground elevation.



BAUGHMAN COMPANY
 315 Ellis St.
 Wichita, KS 67211
 316-262-7271
 BaughmanCo.com

SCHULTE-JOHNSON 2ND ADD. - PHASE II

LINE 4 & LINE 5

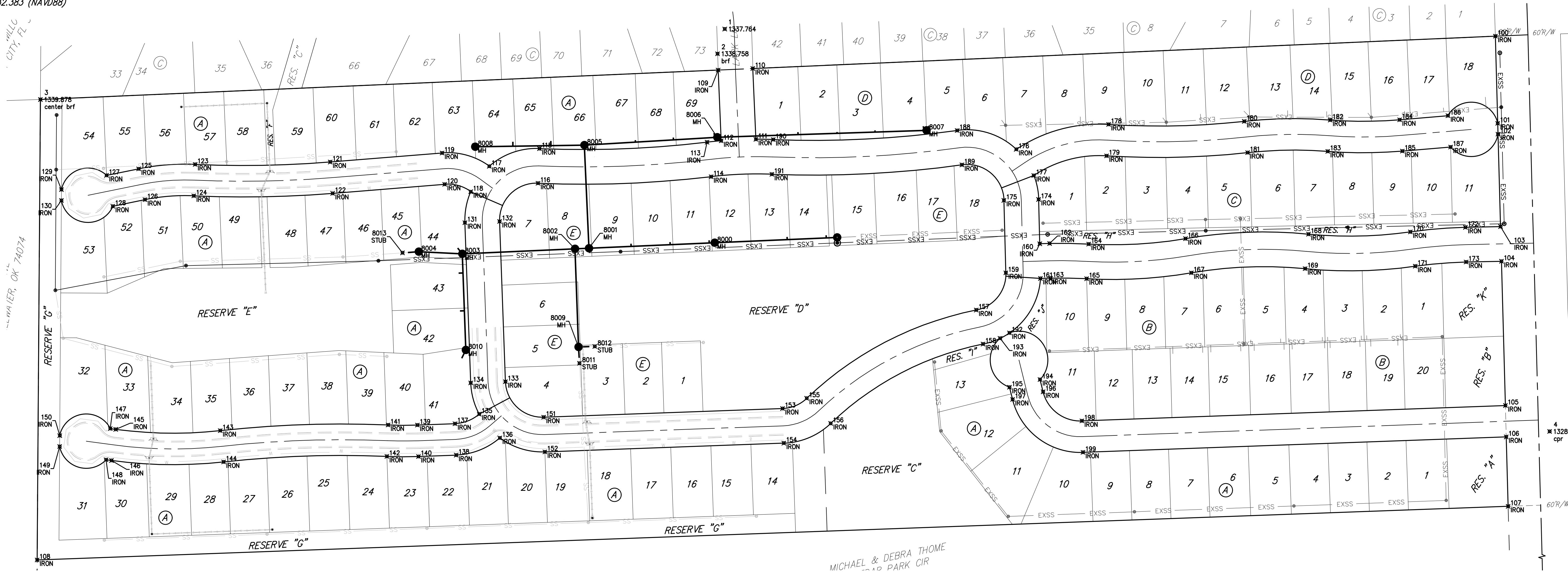
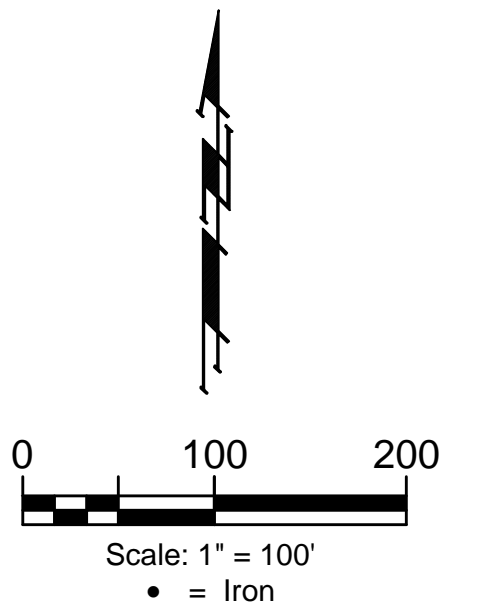
SANITARY SEWER IMPROVEMENTS

PROJECT NUMBER: 468-2019-009469
 DESIGN: AEG DRAWN: HJW
 DATE: December 23, 2021

SHEET 5 OF 16

BENCHMARKS:
 CUT OFF "T"-POST, DOWN 0.25'
 13.5' WEST OF POWER POLE
 30' SOUTH OF FIRE HYDRANT
 +/- 200' SOUTH OF CENTERLINE
 DRIVE TO HOUSE # 2816 S MAIZE RD.
 ELEV. = 1328.386 (NAVD 88)

SQUARE CUT WITH + IN SW WINGWALL
 OF THE SOUTHERNMOST OF THREE
 CONCRETE DITCH CHECKS
 +/- 1125' WEST OF CENTERLINE S.
 MAIZE RD, BEHIND HOUSE #2951 S
 MAIZE RD.
 ELEV. = 1332.383 (NAVD88)



MICHAEL & DEBRA THOME
 10 PARK CIR

Point #	Northing	Easting	Description
1	1,669,599.79	1,611,470.22	brf
2	1,669,554.19	1,611,456.84	
3	1,669,469.79	1,610,208.70	center brf
4	1,668,857.63	1,612,990.74	cpr
100	1,669,586.64	1,612,890.76	IRON
101	1,669,425.88	1,612,895.13	IRON
102	1,669,405.88	1,612,895.67	IRON
103	1,669,235.51	1,612,900.30	IRON
104	1,669,171.53	1,612,902.04	IRON
105	1,668,905.53	1,612,908.26	IRON
106	1,668,847.55	1,612,910.84	IRON
107	1,668,719.58	1,612,914.31	IRON
108	1,668,620.72	1,610,202.69	IRON
109	1,669,524.22	1,611,458.00	IRON
110	1,669,527.00	1,611,521.94	IRON
111	1,669,396.47	1,611,527.63	IRON
112	1,669,393.68	1,611,463.69	IRON
113	1,669,391.03	1,611,437.60	IRON
114	1,669,327.48	1,611,445.13	IRON
115	1,669,379.26	1,611,128.67	IRON
116	1,669,315.32	1,611,126.00	IRON
117	1,669,346.65	1,611,036.15	IRON
118	1,669,299.77	1,611,002.00	IRON
119	1,669,371.16	1,610,949.17	IRON
120	1,669,313.35	1,610,953.82	IRON

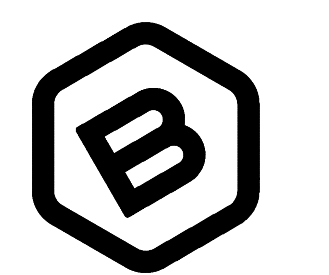
Point #	Northing	Easting	Description
121	1,669,354.56	1,610,742.85	IRON
122	1,669,296.75	1,610,747.50	IRON
123	1,669,350.08	1,610,493.99	IRON
124	1,669,292.14	1,610,491.42	IRON
125	1,669,341.90	1,610,389.84	IRON
126	1,669,285.07	1,610,401.42	IRON
127	1,669,328.82	1,610,330.06	IRON
128	1,669,272.99	1,610,342.14	IRON
129	1,669,303.62	1,610,247.52	IRON
130	1,669,283.62	1,610,247.38	IRON
131	1,669,242.57	1,610,991.24	IRON
132	1,669,244.90	1,611,055.20	IRON
133	1,668,949.43	1,611,065.97	IRON
134	1,668,947.10	1,611,002.01	IRON
135	1,668,889.54	1,611,017.58	IRON
136	1,668,845.70	1,611,055.55	IRON
137	1,668,872.00	1,610,973.01	IRON
138	1,668,814.04	1,610,975.12	IRON
139	1,668,869.47	1,610,903.59	IRON
140	1,668,811.51	1,610,905.70	IRON
141	1,668,869.60	1,610,849.73	IRON
142	1,668,811.65	1,610,847.33	IRON
143	1,668,859.10	1,610,540.12	IRON
144	1,668,801.45	1,610,546.44	IRON
145	1,668,861.54	1,610,347.53	IRON

Point #	Northing	Easting	Description
146	1,668,804.06	1,610,339.74	IRON
147	1,668,862.90	1,610,337.49	IRON
148	1,668,805.42	1,610,329.71	IRON
149	1,668,829.97	1,610,244.18	IRON
150	1,668,849.97	1,610,244.32	IRON
151	1,668,883.96	1,611,136.40	IRON
152	1,668,820.00	1,611,138.73	IRON
153	1,668,900.00	1,611,576.76	IRON
154	1,668,836.05	1,611,579.09	IRON
155	1,668,918.80	1,611,621.26	IRON
156	1,668,872.52	1,611,665.48	IRON
157	1,668,081.56	1,611,933.76	IRON
158	1,668,018.81	1,611,946.33	IRON
159	1,668,150.08	1,611,988.38	IRON
160	1,669,203.80	1,612,050.95	IRON
161	1,669,139.81	1,612,052.14	IRON
162	1,669,204.29	1,612,069.12	IRON
163	1,669,140.32	1,612,070.86	IRON
164	1,669,203.21	1,612,141.05	IRON
165	1,669,139.32	1,612,137.39	IRON
166	1,669,213.27	1,612,319.52	IRON
167	1,669,150.19	1,612,330.34	IRON
168	1,669,221.53	1,612,546.29	IRON
169	1,669,157.84	1,612,540.09	IRON
170	1,669,225.73	1,612,734.09	IRON

Point #	Northing	Easting	Description
171	1,669,162.37	1,612,743.13	IRON
172	1,669,234.06	1,612,835.47	IRON
173	1,669,170.08	1,612,836.90	IRON
174	1,669,285.54	1,612,048.73	IRON
175	1,669,283.80	1,611,994.75	IRON
176	1,669,377.85	1,612,007.49	IRON
177	1,669,329.71	1,612,039.84	IRON
178	1,669,423.86	1,612,177.89	IRON
179	1,669,365.98	1,612,174.17	IRON
180	1,669,429.50	1,612,427.81	IRON
181	1,669,371.84	1,612,434.14	IRON
182	1,669,432.03	1,612,586.31	IRON
183	1,669,374.20	1,612,581.82	IRON
184	1,669,432.47	1,612,714.37	IRON
185	1,669,374.68	1,612,719.26	IRON
186	1,669,440.01	1,612,803.40	IRON
187	1,669,382.22	1,612,808.29	IRON
188	1,669,412.71	1,611,898.71	IRON
189	1,669,349.31	1,611,907.47	IRON
190	1,669,395.90	1,611,559.59	IRON
191	1,669,331.95	1,611,557.14	IRON
192	1,669,039.36	1,611,995.05	IRON
193	1,669,029.34	1,611,977.74	IRON
194	1,668,953.33	1,612,051.40	IRON
195	1,668,939.24	1,611,995.14	IRON

Point #	Northing	Easting	Description
196	1,668,930.78	1,612,057.05	IRON
197	1,668,916.69	1,612,000.78	IRON
198	1,668,877.08	1,612,128.50	IRON
199	1,668,819.12	1,612,130.62	IRON

Point #	Northing	Easting	Description
8000	1,669,205.54	1,611,451.56	MH
8001	1,669,195.44	1,611,219.78	MH
8002	1,669,194.33	1,611,194.13	MH
8003	1,669,185.27	1,610,986.32	MH
8004	1,669,189.12	1,610,906.12	MH
8005	1,669,385.57	1,611,211.50	MH
8006	1,669,400.06	1,611,456.40	MH
8007	1,669,412.79	1,611,842.22	MH
8008	1,669,382.77	1,611,010.24	MH
8009	1,669,013.38	1,611,200.73	MH
8010	1,669,007.98	1,610,992.78	MH
8011	1,668,983.43	1,611,202.37	STUB
8012	1,669,014.48	1,611,230.71	STUB
8013	1,669,187.04	1,610,876.20	STUB



BAUGHMAN COMPANY
 315 Ellis St.
 Wichita, KS 67211
 316-262-7271
 BaughmanCo.com

SCHULTE-JOHNSON 2ND
 ADD. - PHASE II

COORDINATES

SANITARY SEWER
 IMPROVEMENTS
 PROJECT NUMBER:
 468-2019-009469

DESIGN: AEG DRAWN: HJW
 DATE: December 23, 2021

SHEET OF
 15 16

File: E:\Projects\Schulte-Johnson 2nd Addition\Engineering\Phase 2\SS_21-06-E991\SS Plans.dwg