

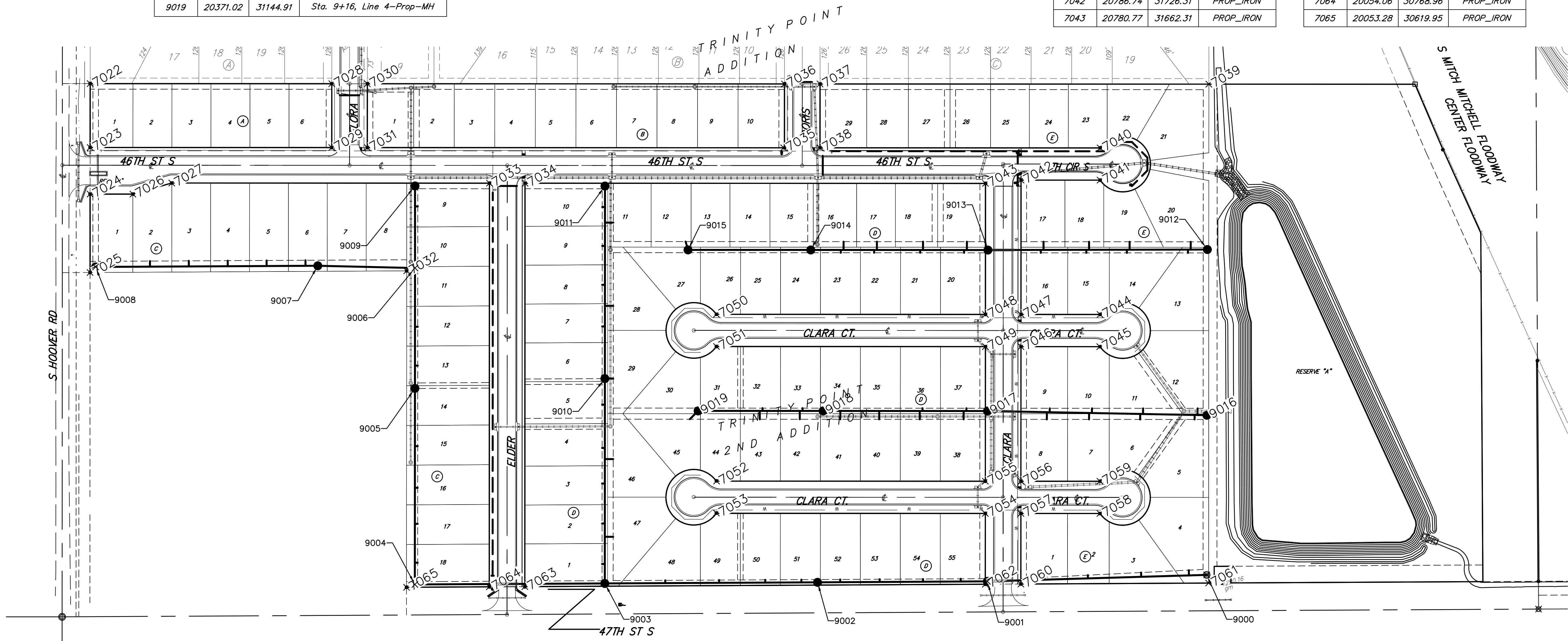
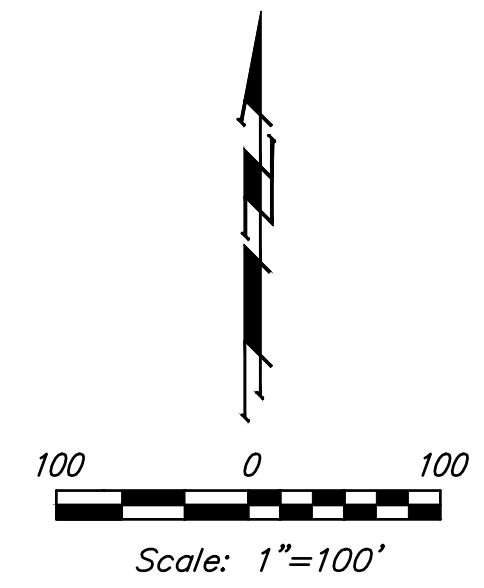
SANITARY SEWER

Point Table			
Point #	Northing	Easting	Raw Description
9000	20075.64	32060.58	Sta. 0+00.0, Line 1-Exist-MH
9001	20063.93	31665.76	Sta. 3+95.0, Line 1-Prop-MH
9002	20062.17	31359.97	Sta. 7+00.8, Line 1-Prop-MH
9003	20060.15	30976.96	Sta. 10+83.8, Line 1-Prop-MH
9004	20058.35	30634.96	Sta. 14+25.8, Line 1-Prop-MH
9005	20411.55	30635.13	Sta. 18+00.0, Line 1-Prop-MH
9006	20628.35	30635.24	Sta. 19+95.8, Line 1-Prop-MH
9007	20632.45	30460.23	Sta. 22+00.0, Line 1-Prop-MH
9008	20630.34	30060.21	Sta. 25+08.8, Line 1-Prop-MH
9009	20776.26	30635.31	Sta. 0+79.0, Line 1A-Prop-MH
9010	20429.15	30977.14	Sta. 4+00.0, Line 2-Prop-MH
9011	20776.10	30977.31	Sta. 6+49.0, Line 2-Prop-MH
9012	20661.70	32061.81	Sta. 0+00.0, Line 3-Exist-MH
9013	20660.76	31666.81	Sta. 3+95.0, Line 3-Prop-MH
9014	20660.92	31347.81	Sta. 7+14.5, Line 3-Prop-MH
9015	20661.02	31126.81	Sta. 9+34.6, Line 3-Prop-MH
9016	20363.21	32060.85	Sta. 0+00.0, Line 4-Exist-MH
9017	20370.77	31665.92	Sta. 3+95.0, Line 4-Prop-MH
9018	20370.91	31369.92	Sta. 7+01.0, Line 4-Prop-MH
9019	20371.02	31144.91	Sta. 9+16, Line 4-Prop-MH

PROPERTY IRONS

Point Table			
Point #	Northing	Easting	Raw Description
7022	20960.54	30050.40	PROP_IRON
7023	20845.54	30050.34	PROP_IRON
7024	20761.54	30050.30	PROP_IRON
7025	20620.28	30050.23	PROP_IRON
7026	20761.51	30127.30	PROP_IRON
7027	20781.47	30197.31	PROP_IRON
7028	20960.34	30485.40	PROP_IRON
7029	20845.34	30485.34	PROP_IRON
7030	20960.31	30549.40	PROP_IRON
7031	20845.31	30549.34	PROP_IRON
7032	20623.28	30620.22	PROP_IRON
7033	20781.20	30769.31	PROP_IRON
7034	20781.17	30833.31	PROP_IRON
7035	20844.94	31298.87	PROP_IRON
7036	20959.94	31300.43	PROP_IRON
7037	20959.91	31364.43	PROP_IRON
7038	20844.91	31364.37	PROP_IRON
7039	20959.58	32064.43	PROP_IRON
7040	20844.67	31868.64	PROP_IRON
7041	20786.67	31868.61	PROP_IRON
7042	20786.74	31726.31	PROP_IRON
7043	20780.77	31662.31	PROP_IRON

Point Table			
Point #	Northing	Easting	Raw Description
7044	20544.67	31868.50	PROP_IRON
7045	20486.67	31867.97	PROP_IRON
7046	20486.74	31726.17	PROP_IRON
7047	20544.74	31726.20	PROP_IRON
7048	20544.77	31662.20	PROP_IRON
7049	20486.77	31662.17	PROP_IRON
7050	20545.00	31177.93	PROP_IRON
7051	20487.00	31177.90	PROP_IRON
7052	20244.52	31178.12	PROP_IRON
7053	20187.00	31177.76	PROP_IRON
7054	20186.29	31662.03	PROP_IRON
7055	20244.29	31662.05	PROP_IRON
7056	20244.26	31726.05	PROP_IRON
7057	20186.26	31726.03	PROP_IRON
7058	20186.19	31868.32	PROP_IRON
7059	20244.19	31868.35	PROP_IRON
7060	20059.09	31725.96	PROP_IRON
7061	20060.86	32064.00	PROP_IRON
7062	20058.75	31661.96	PROP_IRON
7063	20054.39	30832.96	PROP_IRON
7064	20054.06	30768.96	PROP_IRON
7065	20053.28	30619.95	PROP_IRON



Baughman Company, P.A.
 11515 W. 45th St., Suite 100, Overland Park, KS 66204
 ENGINEERING | SURVEYING | PLANNING | LANDSCAPE ARCHITECTURE
 Baughman

TRINITY POINT 2ND ADDITION
COORDINATE POINTS
 SANITARY SEWER IMPROVEMENTS

