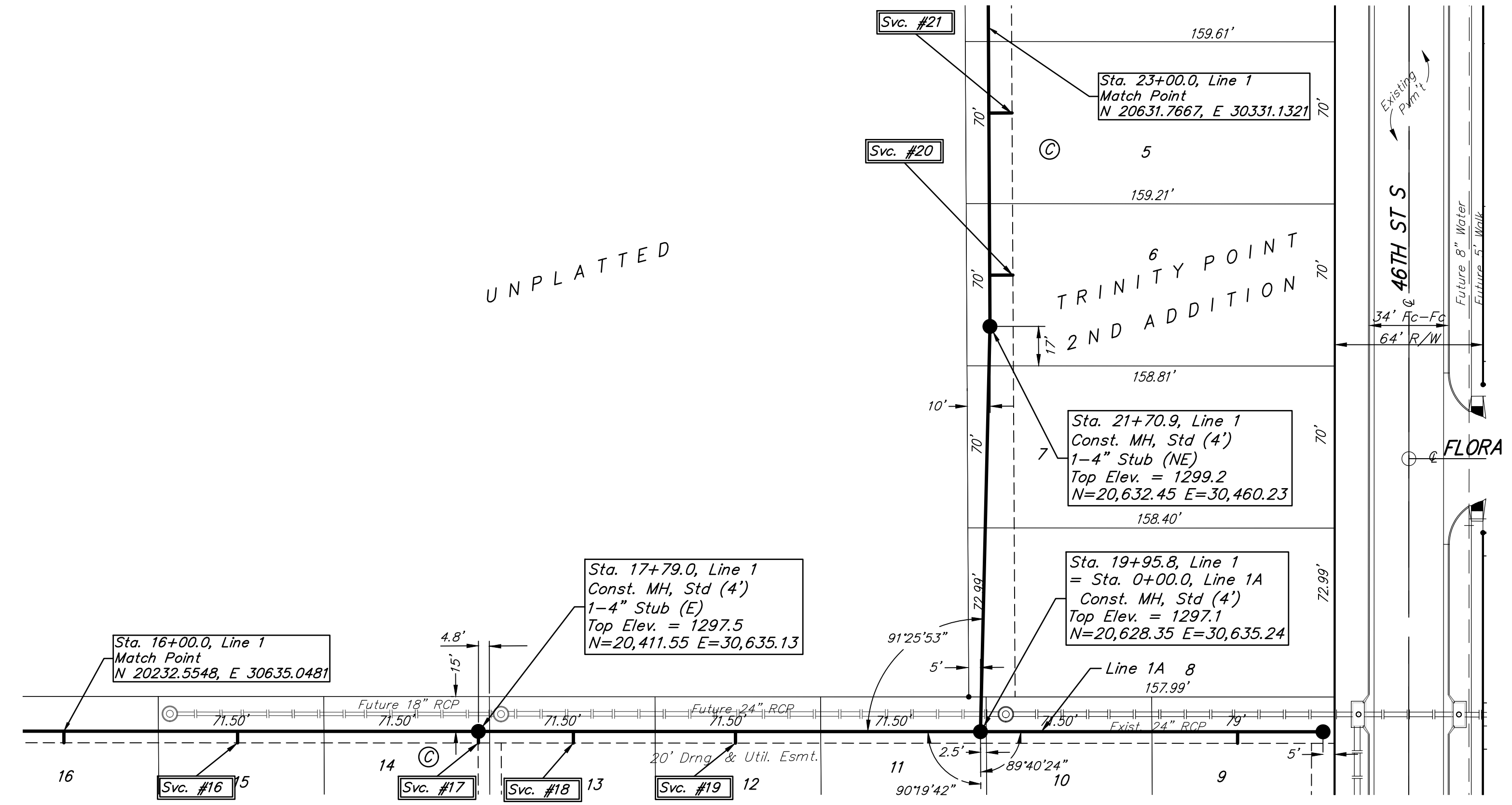


**BENCHMARKS:**  
 BM #1: "□" Cut in face of curb inlet near SE corner of Lot 30, Block C, Gray's 5th Add. Elev. = 1297.86 NAVD88  
 BM #2: "□" Cut in top of curb on east side of Flora, ±10' north of south property line of Gray's 5th Add. Elev. = 1302.40 NAVD88  
 BM #3: "+" Cut in top of curb on east side of Flora, adjacent to common lot line of Lots 6&7, Block B, Trinity Point Add. Elev. = 1299.49 NAVD88

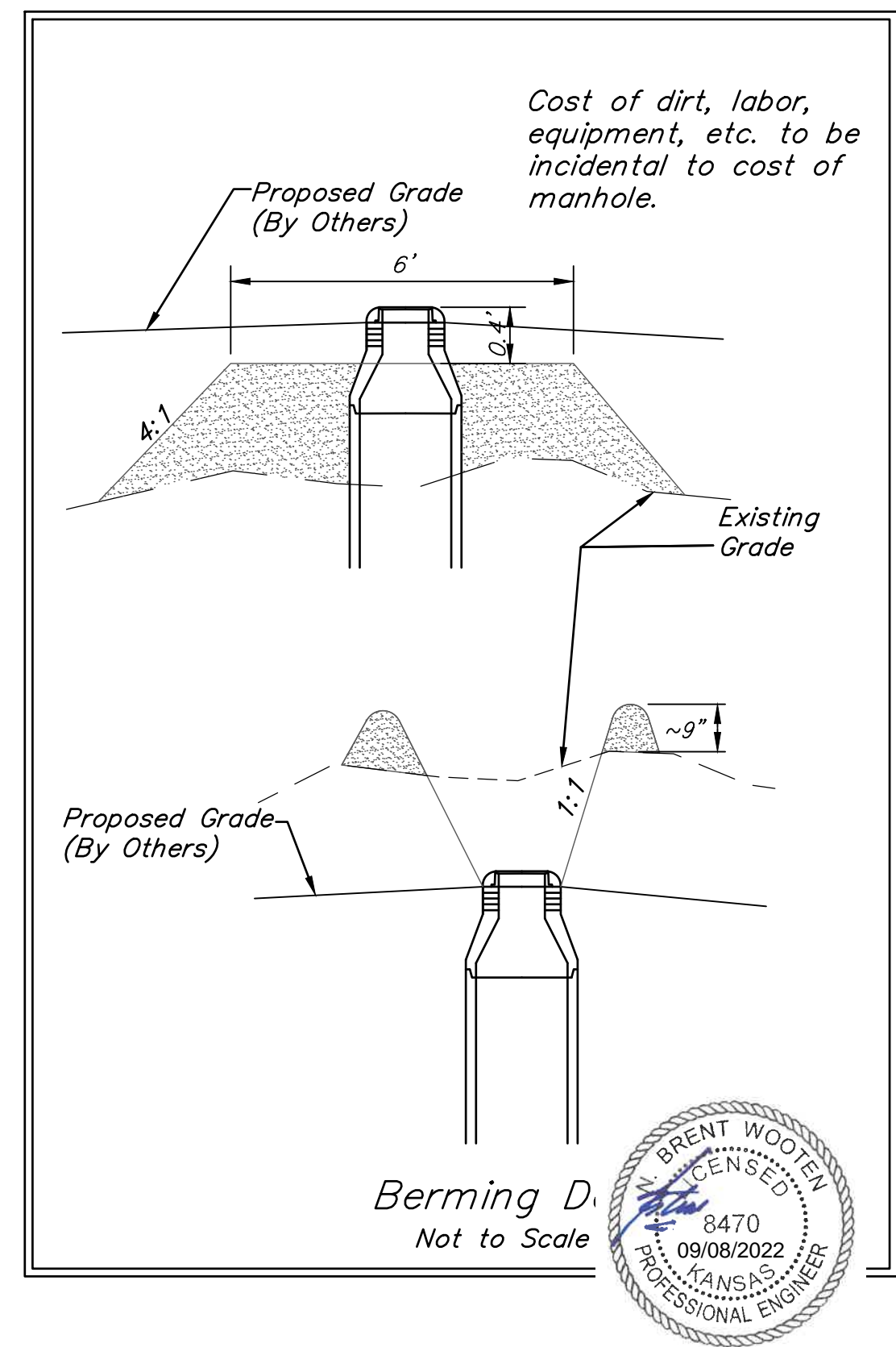
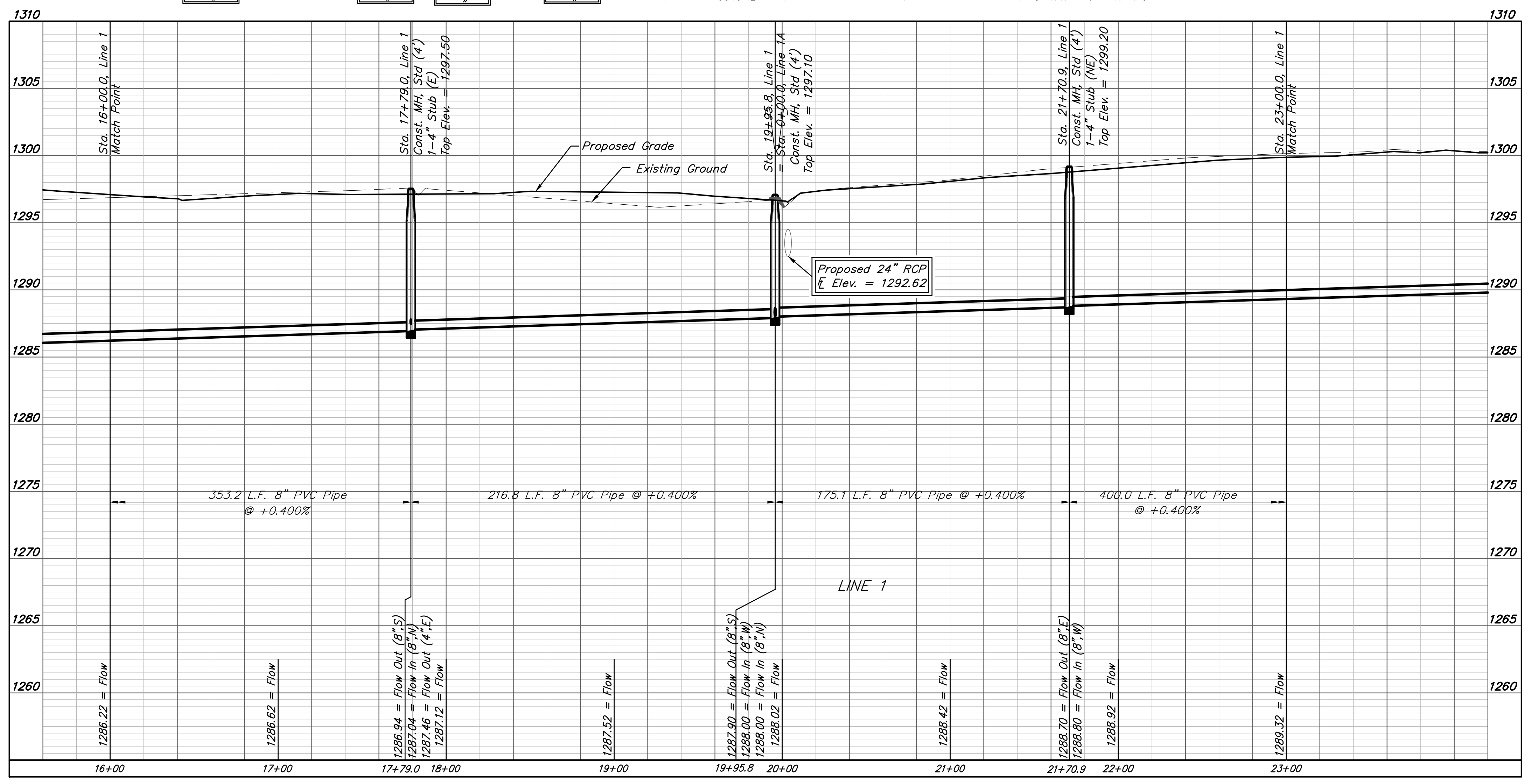
Contractor shall verify elevation and alignment of existing 8" stub prior to construction and notify Engineer of any discrepancy.



**SEWER SERVICE TABLE**

NUMBER	TYPE	LOCATION			FLOWLINE	FOR INFORMATION ONLY			
		LOT NO.	BLOCK	LINE NO.		STATION/DIRECTION	8" PIPE	4" PIPE	APPROXIMATE LENGTH OF 4" PIPE
							VERTICAL	HORIZONTAL	
16	4" Vertical Riser Assy'	15	C	1	16+75.0 / Rt.	1286.52	1286.79	6.2'	5.0'
17	4" Stub	14	C	1	17+79.0 / Rt.	1287.04	1287.47	5.6'	5.0'
18	4" Vertical Riser Assy'	13	C	1	18+20.0 / Rt.	1287.20	1287.63	5.7'	5.0'
19	4" Vertical Riser Assy'	12	C	1	18+90.0 / Rt.	1287.49	1287.92	5.8'	5.0'
20	4" Vertical Riser Assy'	6	C	1	21+93.0 / Rt.	1288.89	1289.32	5.0'	5.0'
21	4" Vertical Riser Assy'	5	C	1	22+63.0 / Rt.	1289.17	1289.60	5.4'	5.0'

Bedding material shall be extended to an elevation 2' maximum below finished grade. All pipe including riser pipe shall be sand backfilled (flushed & vibrated). All service tees shall be rotated horizontally and extended at a 2% slope above horizontal to maintain lowest elevation possible to facilitate sewer service.



Berming D.  
 Not to Scale  
 BRENT WOOLEN  
 LICENSED  
 8470  
 09/08/2022  
 KANSAS  
 PROFESSIONAL ENGINEER