

BENCHMARKS:
 BM #1: "□" Cut in face of curb inlet near SE corner of Lot 30, Block C, Gray's 5th Add. Elev. = 1297.86 NAVD88

BM #2: "□" Cut in top of curb on east side of Flora, ±10' north of south property line of Gray's 5th Add. Elev. = 1302.40 NAVD88

BM #3: "+" Cut in top of curb on east side of Flora, adjacent to common lot line of Lots 6&7, Block B, Trinity Point Add. Elev. = 1299.49 NAVD88

SEWER SERVICE TABLE

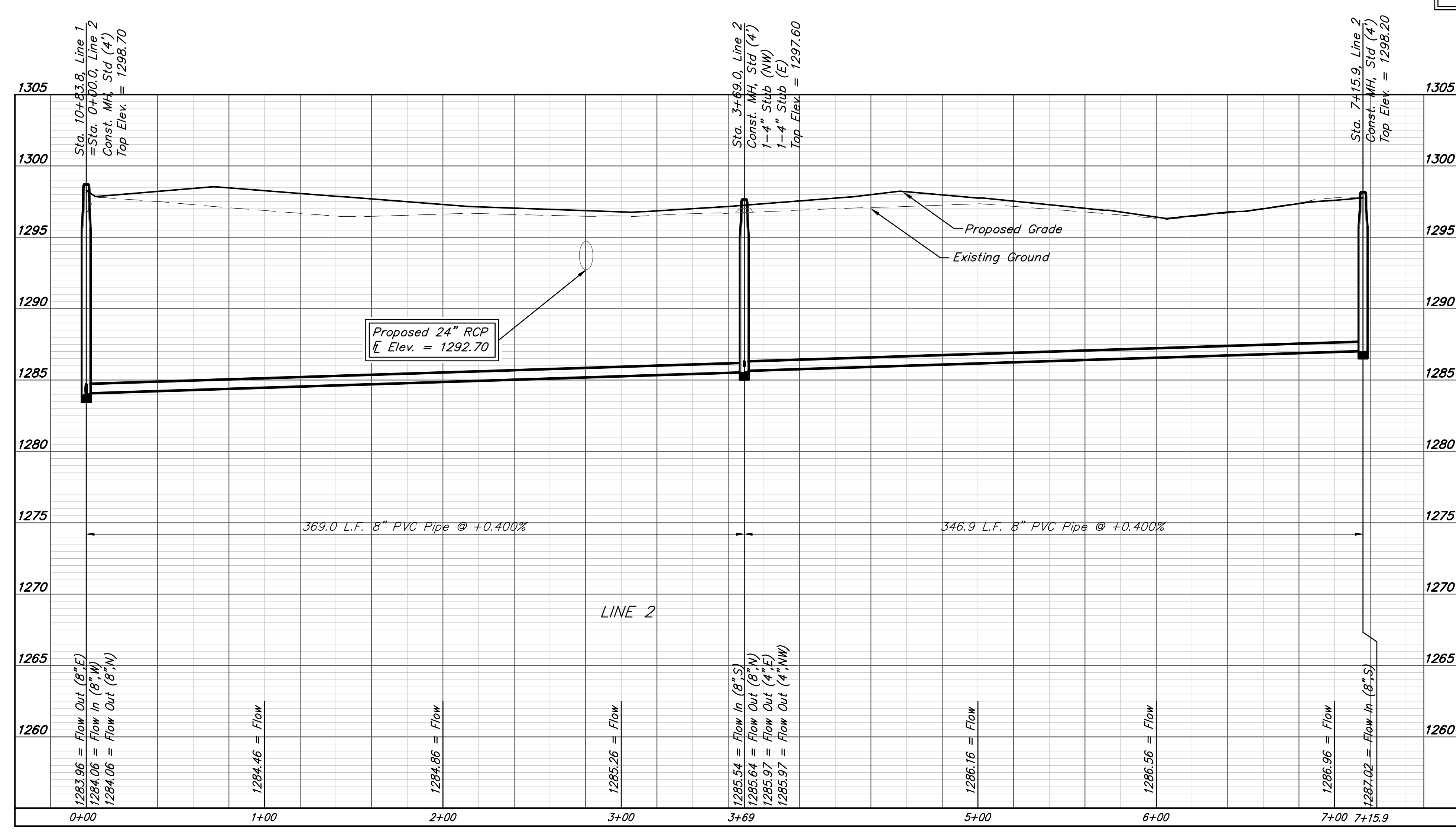
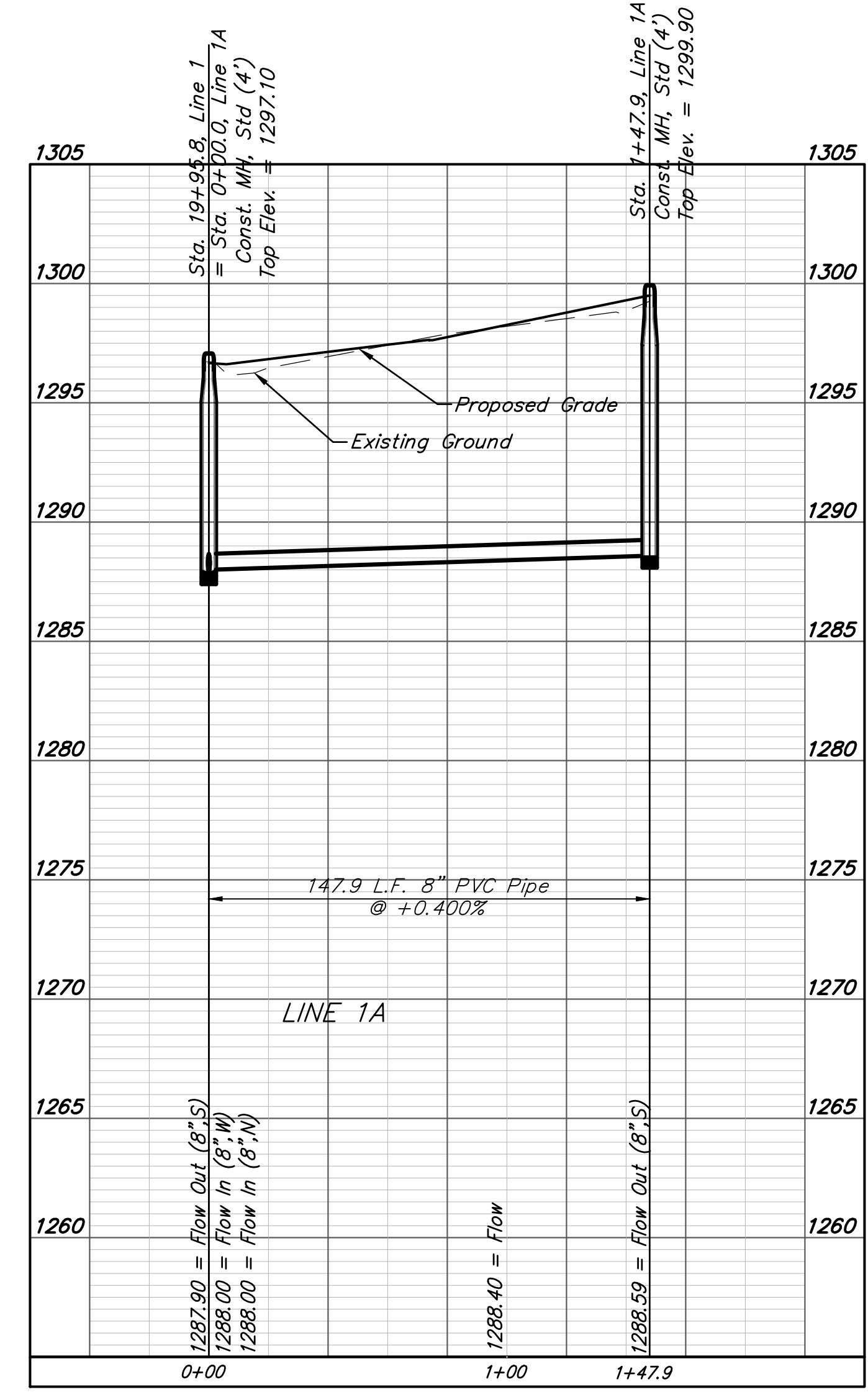
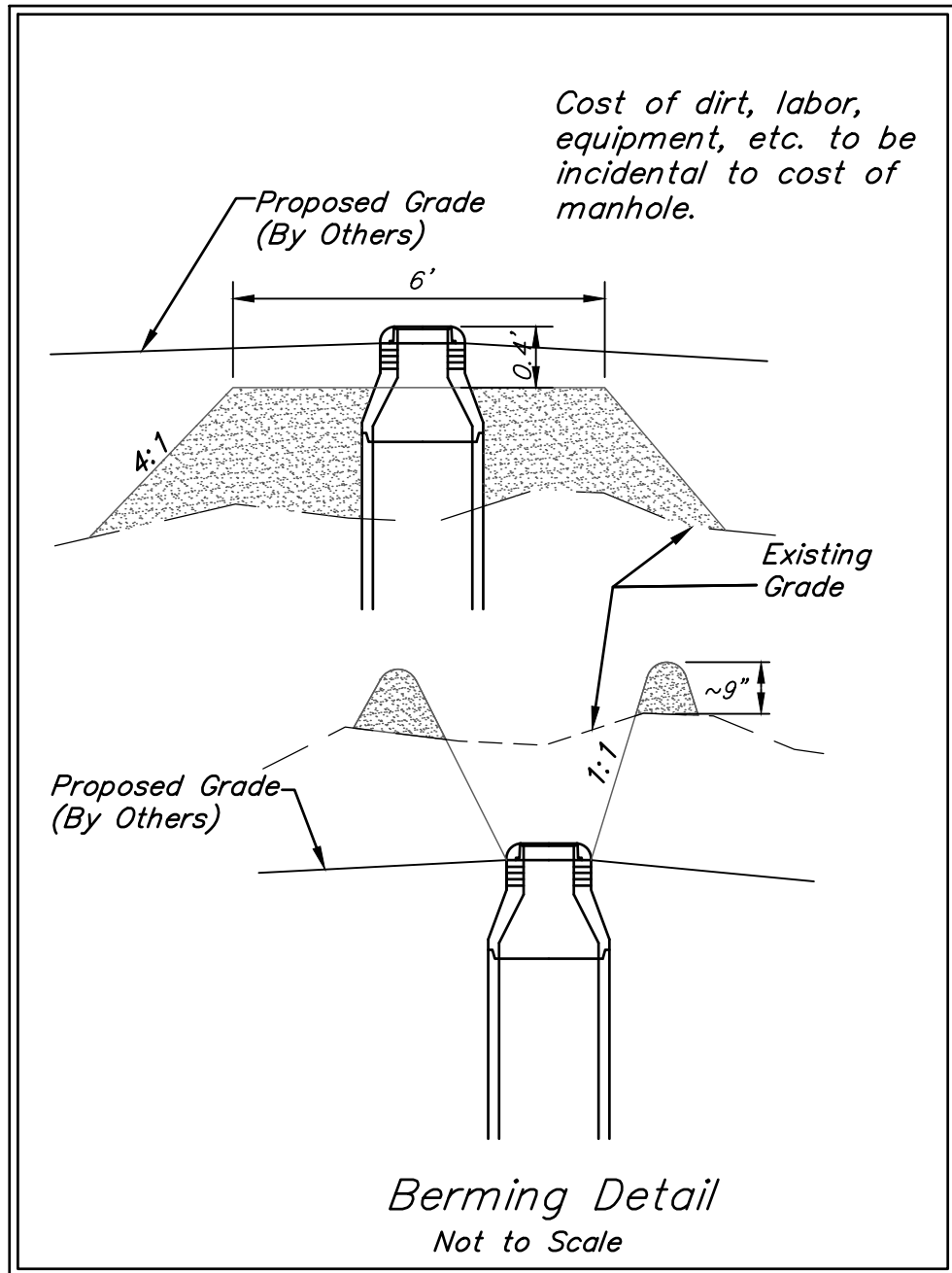
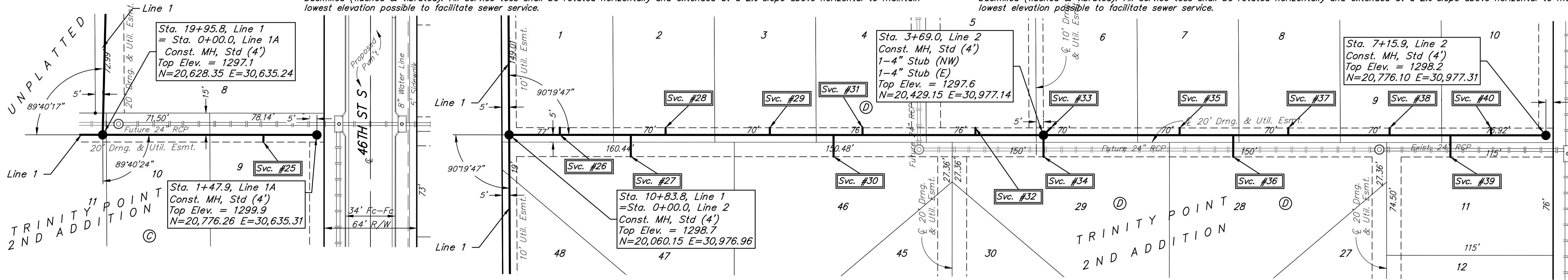
NUMBER	TYPE	LOCATION			FLOWLINE		FOR INFORMATION ONLY		
		LOT NO.	BLOCK	LINE NO.	STATION/DIRECTION	8" PIPE	4" PIPE	APPROXIMATE LENGTH OF 4" PIPE VERTICAL HORIZONTAL	
25	4" Vertical Riser Assy'	9	C	1A	1+11.0 / Rt.	1288.45	1288.88	7.4'	5.0'
26	4" Vertical Riser Assy'	1	D	2	0+35.0 / Lt	1284.20	1284.47	9.1'	5.0'
27	4" Vertical Riser Assy'	47	D	2	0+84.0 / Rt	1284.40	1284.86	8.2'	15.0'
28	4" Vertical Riser Assy'	2	D	2	1+08.0 / Lt	1284.49	1284.76	8.1'	5.0'
29	4" Vertical Riser Assy'	3	D	2	1+80.0 / Lt	1284.78	1285.05	8.5'	5.0'
30	4" Vertical Riser Assy'	46	D	2	2+24.0 / Rt.	1284.96	1285.22	7.4'	5.0'
31	4" Vertical Riser Assy'	4	D	2	2+44.0 / Lt	1285.04	1285.30	7.8'	5.0'
32	4" Vertical Riser Assy'	5	D	2	3+22.0 / Lt	1285.35	1285.62	7.2'	5.0'

Bedding material shall be extended to an elevation 2' maximum below finished grade. All pipe including riser pipe shall be sand backfilled (flushed & vibrated). All service tees shall be rotated horizontally and extended at a 2% slope above horizontal to maintain lowest elevation possible to facilitate sewer service.

SEWER SERVICE TABLE

NUMBER	TYPE	LOCATION			FLOWLINE		FOR INFORMATION ONLY		
		LOT NO.	BLOCK	LINE NO.	STATION/DIRECTION	8" PIPE	4" PIPE	APPROXIMATE LENGTH OF 4" PIPE VERTICAL HORIZONTAL	
33	4" Stub	6	D	2	3+69.0 / Lt	1285.54	1285.85	7.5'	7.1'
34	4" Stub	29	D	2	3+69.0 / Rt.	1285.54	1286.01	7.3'	15.0'
35	4" Vertical Riser Assy'	7	D	2	4+63.0 / Lt	1286.02	1286.28	6.9'	5.0'
36	4" Vertical Riser Assy'	28	D	2	5+00.0 / Rt.	1286.17	1286.63	7.1'	15.0'
37	4" Vertical Riser Assy'	8	D	2	5+38.0 / Lt	1286.32	1286.58	6.5'	5.0'
38	4" Vertical Riser Assy'	9	D	2	6+08.0 / Lt	1286.60	1286.86	5.5'	5.0'
39	4" Vertical Riser Assy'	11	D	2	6+50.0 / Rt.	1286.77	1287.23	5.8'	15.0'
40	4" Vertical Riser Assy'	10	D	2	6+78.0 / Lt.	1286.88	1287.14	8.6'	5.0'

Bedding material shall be extended to an elevation 2' maximum below finished grade. All pipe including riser pipe shall be sand backfilled (flushed & vibrated). All service tees shall be rotated horizontally and extended at a 2% slope above horizontal to maintain lowest elevation possible to facilitate sewer service.



Contractor shall verify elevation and alignment of existing 8" stub prior to construction and notify Engineer of any discrepancy.



Baughman Company, P.A.
 ENGINEERING, SURVEYING, PLANNING & LANDSCAPE ARCHITECTURE
 1501 W. 12th St., Suite 200, Topeka, KS 66604
 Phone: 781-345-1234 Fax: 781-345-1234
 www.baughmanpa.com

TRINITY POINT 2ND ADDITION
LINE 1A & 2
 SANITARY SEWER IMPROVEMENTS