

BENCHMARKS:
 BM #1: "□" Cut in face of curb inlet near SE corner of Lot 30, Block C, Gray's 5th Add. Elev. = 1297.86 NAVD88
 BM #2: "□" Cut in top of curb on east side of Flora, ±10' north of south property line of Gray's 5th Add. Elev. = 1302.40 NAVD88
 BM #3: "+" Cut in top of curb on east side of Flora, adjacent to common lot line of Lots 6&7, Block B, Trinity Point Add. Elev. = 1299.49 NAVD88

SEWER SERVICE TABLE

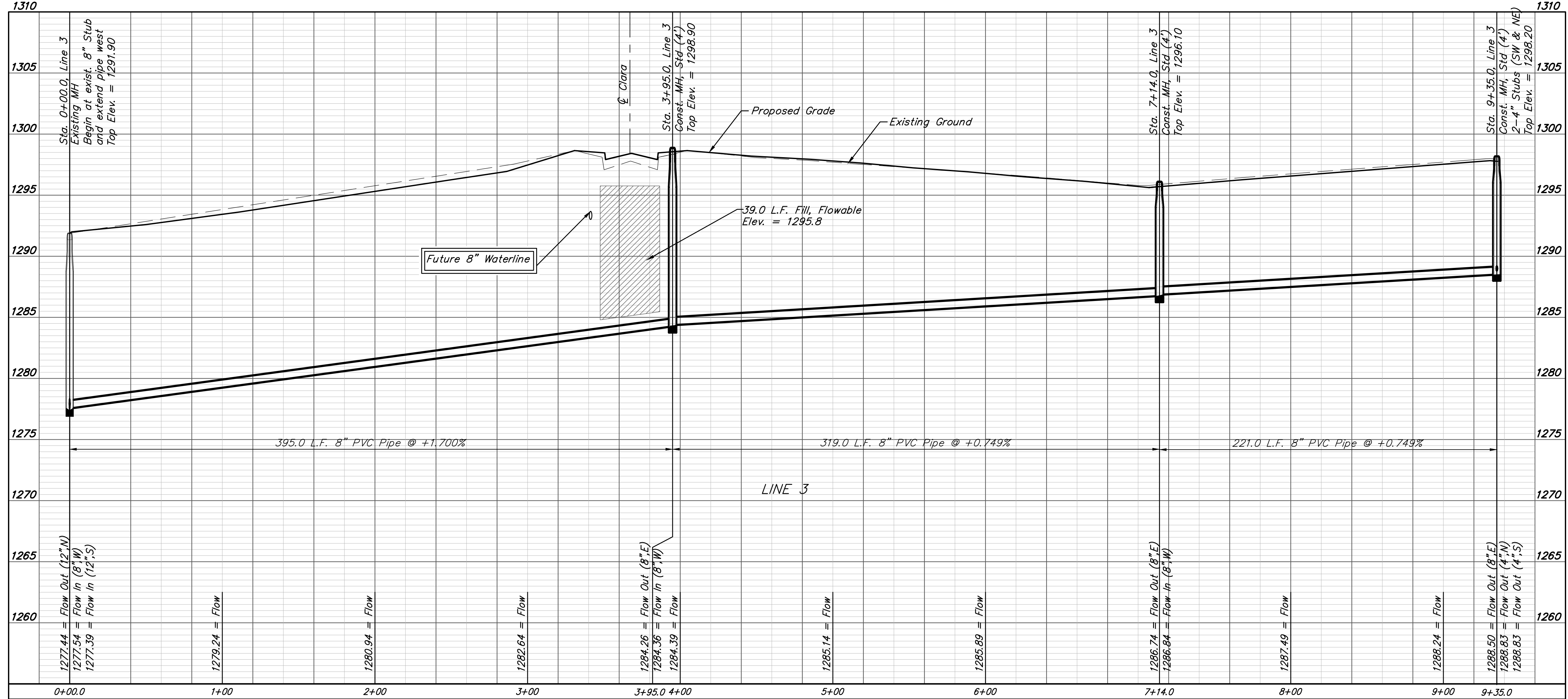
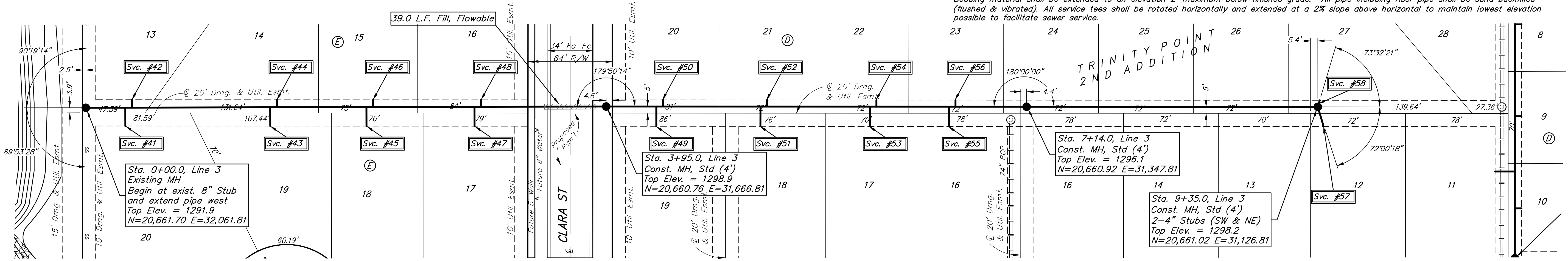
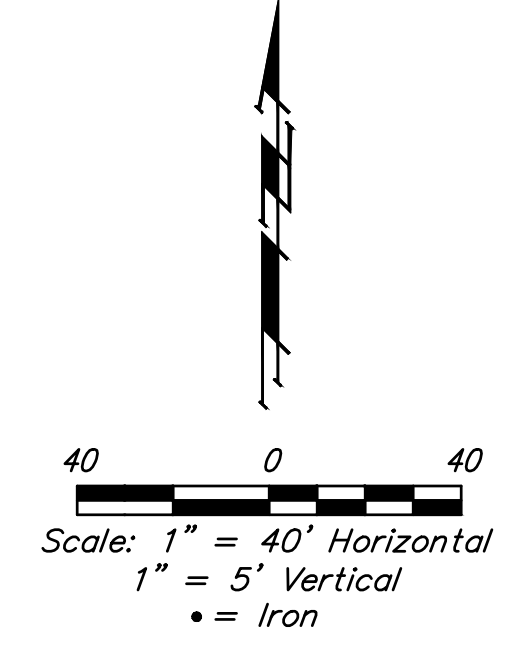
NUMBER	TYPE	LOCATION				FLOWLINE		FOR INFORMATION ONLY	
		LOT NO.	BLOCK	LINE NO.	STATION/DIRECTION	8" PIPE	4" PIPE	APPROXIMATE LENGTH OF 4" PIPE	
					VERTICAL	HORIZONTAL			
41	4" Vertical Riser Assy'	20	E	3	0+30.0 / Rt.	1278.05	1278.50	9.9'	14.0'
42	4" Vertical Riser Assy'	13	E	3	0+35.0 / Lt.	1278.14	1278.42	10.1'	6.0'
43	4" Vertical Riser Assy'	19	E	3	1+40.0 / Rt.	1279.92	1280.37	9.9'	14.3'
44	4" Vertical Riser Assy'	14	E	3	1+45.0 / Lt.	1280.01	1280.29	10.3'	5.7'
45	4" Vertical Riser Assy'	18	E	3	2+13.0 / Rt.	1281.16	1281.62	10.0'	14.5'
46	4" Vertical Riser Assy'	15	E	3	2+18.0 / Lt.	1281.25	1281.52	10.5'	5.5'
47	4" Vertical Riser Assy'	17	E	3	2+95.0 / Rt.	1282.56	1283.02	10.0'	14.7'

Bedding material shall be extended to an elevation 2' maximum below finished grade. All pipe including riser pipe shall be sand backfilled (flushed & vibrated). All service tees shall be rotated horizontally and extended at a 2% slope above horizontal to maintain lowest elevation possible to facilitate sewer service.

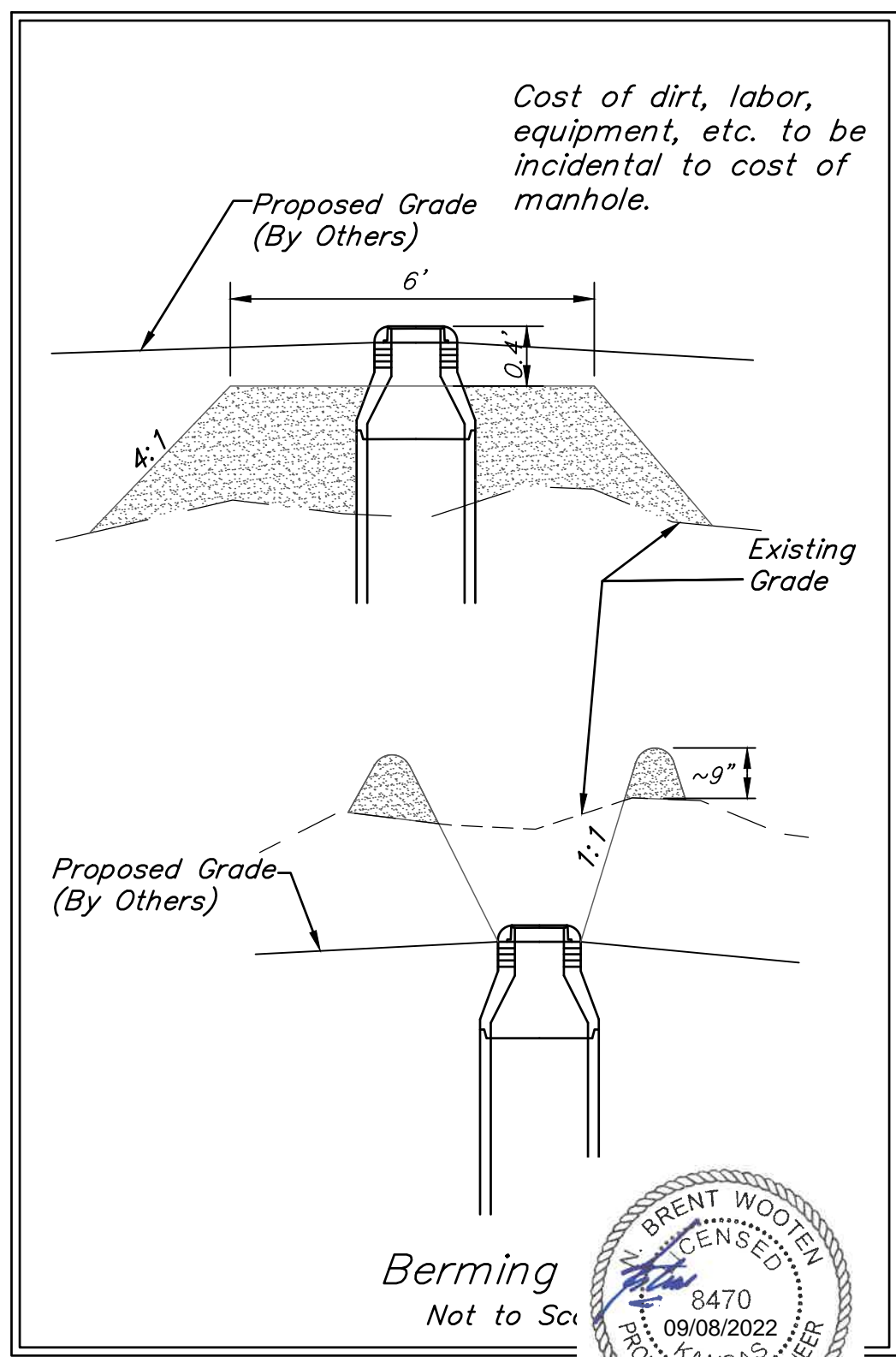
SEWER SERVICE TABLE

NUMBER	TYPE	LOCATION				FLOWLINE		FOR INFORMATION ONLY	
		LOT NO.	BLOCK	LINE NO.	STATION/DIRECTION	8" PIPE	4" PIPE	APPROXIMATE LENGTH OF 4" PIPE	
					VERTICAL	HORIZONTAL	VERTICAL	HORIZONTAL	
48	4" Vertical Riser Assy'	16	E	3	3+00.0 / Lt.	1282.64	1282.91	10.6'	5.3'
49	4" Vertical Riser Assy'	19	D	3	4+33.0 / Rt.	1284.64	1285.11	13.1'	15.0'
50	4" Vertical Riser Assy'	20	D	3	4+38.0 / Lt.	1284.68	1284.95	12.9'	5.0'
51	4" Vertical Riser Assy'	18	D	3	5+12.0 / Rt.	1285.23	1285.70	7.9'	15.0'
52	4" Vertical Riser Assy'	21	D	3	5+17.0 / Lt.	1284.30	1284.56	8.6'	5.0'
53	4" Vertical Riser Assy'	21	D	3	5+95.0 / Lt.	1284.94	1285.21	7.6'	5.0'
54	4" Vertical Riser Assy'	21	D	3	6+00.0 / Lt.	1284.68	1284.95	7.5'	5.0'
55	4" Vertical Riser Assy'	21	D	3	6+55.0 / Lt.	1285.09	1285.36	6.9'	5.0'
56	4" Vertical Riser Assy'	21	D	3	6+60.0 / Lt.	1285.27	1285.54	6.4'	5.0'
57	4" Stub	12	D	3	9+35.0 / Rt.	1288.49	1289.13	4.9'	15.6'
58	4" Stub	27	D	3	9+35.0 / Lt.	1288.49	1289.13	4.9'	15.3'

Bedding material shall be extended to an elevation 2' maximum below finished grade. All pipe including riser pipe shall be sand backfilled (flushed & vibrated). All service tees shall be rotated horizontally and extended at a 2% slope above horizontal to maintain lowest elevation possible to facilitate sewer service.



Contractor shall verify elevation and alignment of existing 8" stub prior to construction and notify Engineer of any discrepancy.



Berming
Not to Scale

