

SANITARY SEWER LINE NO. 1			
STRUCTURE TABLE			
ID	STATION	COORDINATES	DESCRIPTION
Existing MH	10+00.0 SS LINE NO. 1	N: 384,938.3427 E: 2,372,652.2936	4' DIAMETER MANHOLE
MH 1	11+43.0 SS LINE NO. 1	N: 384,951.9166 E: 2,372,509.8973	5' DIAMETER MANHOLE
MH 2	12+67.2 SS LINE NO. 1	N: 384,989.1279 E: 2,372,391.4543	5' DIAMETER MANHOLE
MH 3	14+87.1 SS LINE NO. 1	N: 385,105.6052 E: 2,372,204.9419	5' DIAMETER MANHOLE
MH 4	15+64.8 SS LINE NO. 1	N: 385,027.9192 E: 2,372,206.4158	5' DIAMETER OUTSIDE DROP MANHOLE
MH 5	17+38.7 SS LINE NO. 1	N: 385,024.6194 E: 2,372,032.4953	5' DIAMETER MANHOLE
MH 6	19+87.1 SS LINE NO. 1	N: 385,189.3196 E: 2,371,846.5800	5' DIAMETER OUTSIDE DROP MANHOLE
MH 16	21+15.5 SS LINE NO. 1	N: 385,301.7043 E: 2,371,908.6453	5' DIAMETER MANHOLE

SANITARY SEWER LINE NO. 2			
STRUCTURE TABLE			
ID	STATION	COORDINATES	DESCRIPTION
MH 6	19+87.1 SS LINE NO. 1	N: 385,189.3196 E: 2,371,846.5800	5' DIAMETER OUTSIDE DROP MANHOLE
MH 7	10+47.1 SS LINE NO. 2	N: 385,148.7673 E: 2,371,822.6493	5' DIAMETER MANHOLE
MH 8	12+57.1 SS LINE NO. 2	N: 385,224.9202 E: 2,371,627.0053	5' DIAMETER MANHOLE
MH 9	13+24.5 SS LINE NO. 2	N: 385,159.9935 E: 2,371,608.7197	5' DIAMETER MANHOLE
MH 10	15+11.3 SS LINE NO. 2	N: 384,974.7909 E: 2,371,632.3583	5' DIAMETER MANHOLE
MH 11	16+97.8 SS LINE NO. 2	N: 384,789.0122 E: 2,371,615.1226	5' DIAMETER MANHOLE

SANITARY SEWER LINE NO. 4			
STRUCTURE TABLE			
ID	STATION	COORDINATES	DESCRIPTION
MH 7	10+47.1 SS LINE NO. 2	N: 385,148.7673 E: 2,371,822.6493	5' DIAMETER MANHOLE
MH 13	12+17.3 SS LINE NO. 4	N: 384,931.4992 E: 2,371,825.1756	5' DIAMETER MANHOLE
MH 14	14+01.2 SS LINE NO. 4	N: 384,747.6176 E: 2,371,828.5699	4' DIAMETER MANHOLE

SANITARY SEWER LINE NO. 3			
STRUCTURE TABLE			
ID	STATION	COORDINATES	DESCRIPTION
MH 4	15+64.8 SS LINE NO. 1	N: 385,027.9192 E: 2,372,206.4158	5' DIAMETER OUTSIDE DROP MANHOLE
MH 12	12+73.1 SS LINE NO. 3	N: 384,754.8848 E: 2,372,211.5961	4' DIAMETER MANHOLE

BENCH MARKS

BM-201
ELEV: 1,399.86 (NAVD 88)
SQUARE CUT ON THE NORTHEAST SIDE OF A CONCRETE LIGHT POLE BASE ON THE SOUTH SIDE OF 19TH ST. NORTH AND WEST OF NORTH VERANDA ST. +/- 3' NORTHEAST TO THE SOUTH CURB LINE ALONG 19TH ST. NORTH. +/- 68' NORTHEAST TO THE BASE OF THE "ROUNDOABOUT AHEAD" SIGN POST.

BM-202
ELEV: 1,394.77 (NAVD 88)
SQUARE CUT ON TOP OF CURB ALONG 19TH ST. NORTH NEAR THE SOUTHWEST CORNER OF LOT 4, BLOCK 3, OAK CREEKS 2ND ADDITION. +/- 5' SOUTHWEST TO THE TOP BOLT OF A FIRE HYDRANT. +/- 55' WEST TO THE CENTER OF A BURIED ELECTRIC HAND HOLE. +/- 64' NORTHWEST TO THE BASE OF A LIGHT POLE.

BM-260
ELEV: 1,398.45 (NAVD 88)
SET "T" SHAPED FENCE POST 0.2' BELOW SURFACE NEAR THE SOUTHWEST CORNER OF LOT 4 RESERVE A OF THE VILLAS AT OAK CREEK 3RD ADDITION.

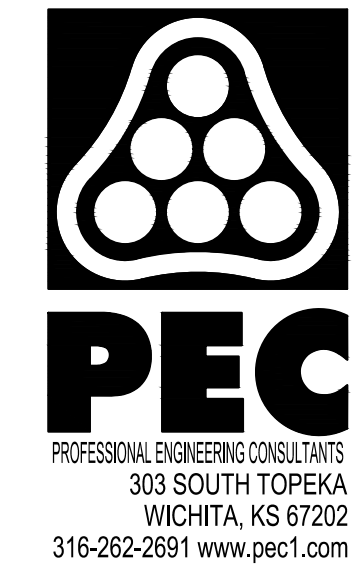
BM-261
ELEV: 1,393.92 (NAVD 88)
SET "T" SHAPED FENCE POST 0.2' BELOW SURFACE 2' NORTH OF THE NORTH POWERPOLE OF AN OVERHEAD TRANSMISSION LINE. NEAR THE SOUTHWEST PROPERTY CORNER OF LOT 7 RESERVE B OF THE VILLAS OAK CREEK 3RD ADDITION.

BM-262
ELEV: 1,400.07 (NAVD 88)
SET "T" SHAPED FENCE POST 0.2' BELOW SURFACE 2' NEAR THE SOUTHWESTERN MOST PROPERTY CORNER OF LOT 13 RESERVE B OF THE VILLAS OAK CREEK 3RD ADDITION.

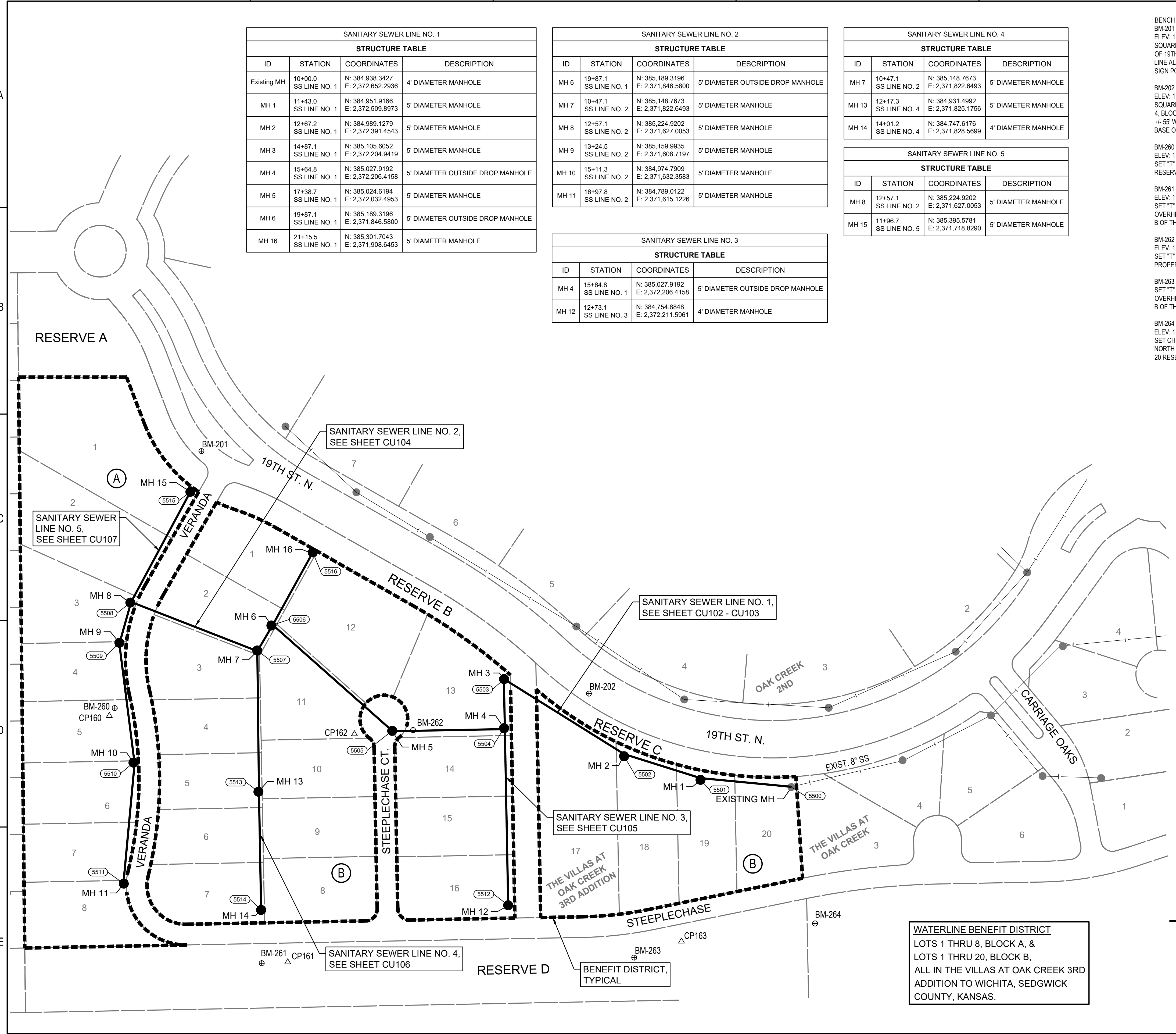
BM-263 ELEV: 1,386.30 (NAVD 88)
SET "T" SHAPED FENCE POST 0.2' BELOW SURFACE 1.5' NORTH OF THE NORTH POWERPOLE OF AN OVERHEAD TRANSMISSION LINE. NEAR THE SOUTHWEST PROPERTY CORNER OF LOT 18 RESERVE B OF THE VILLAS OAK CREEK 3RD ADDITION.

BM-264
ELEV: 1,376.76 (NAVD 88)
SET CHISELED SQUARE CUT IN THE NORTHWEST CORNER OF CONCRETE HEADWALL ON THE NORTH SIDE OF A WATER RETENTION POND NEAR THE SOUTHWEST PROPERTY CORNER OF LOT 20 RESERVE B OF THE VILLAS OAK CREEK 3RD ADDITION.

- HORIZONTAL CONTROL POINTS**
- CP-160
N: 385,048.4700 E: 2,371,593.1610
SET 1/2" REBAR WITH BLUE PEC CP CAP 0.2 FEET BELOW SURFACE
- 11.6' NNE TO "T" SHAPED FENCE POST FLUSH WITH GROUND
 - 45.82' NNE TO 1/2" REBAR WITH ORANGE PEC CAP (SOUTHWEST PC FOR FUTURE VERANDA ST #4024)
 - 395' S TO LINE OF EAST-WEST POWERPOLES
- CP-161
N: 384,666.7780 E: 2,371,869.8110
SET 1/2" REBAR WITH BLUE PEC CP CAP 0.2 FEET BELOW SURFACE
- 40.07' W TO "MAG" NAIL IN NORTH FACE WOODEN POWER POLE
 - 13' S TO LINE OF EAST-WEST POWER POLES
 - 158.81' WNW TO 1/2" REBAR WITH ORANGE PEC CAP (SOUTHWEST PC FOR FUTURE STEEPLECHASE ST # 4029)
- CP-162
N: 385,020.1900 E: 2,371,973.1910
SET 1/2" REBAR WITH BLUE PEC CP CAP 0.2 FEET BELOW SURFACE
- 232.4' NE TO "MAG" NAIL IN SOUTH FACE 30' OAK TREE
 - 91.08' E TO "T" SHAPED FENCE POST FLUSH WITH GROUND
 - 36.55' SE TO 1/2" REBAR WITH ORANGE PEC CAP (SOUTHWEST PC FOR FUTURE STEEPLECHASE CT # 4032)
- CP-163
N: 384,698.9090 E: 2,372,480.2280
SET 1/2" REBAR WITH BLUE PEC CP CAP 0.2 FEET BELOW SURFACE
- 77.4' SW TO "MAG" NAIL IN NORTH FACE WOODEN POWER POLE
 - 35.5' S TO LINE OF EAST-WEST POWER POLES
 - 48.15' SE TO 1/2" REBAR WITH ORANGE PEC CAP (SOUTHWEST PC FOR FUTURE STEEPLECHASE ST # 4041)



SANITARY SEWER IMPROVEMENTS TO SERVE THE VILLAS AT OAK CREEK 3RD ADDITION
 GARY JANZEN, P.E. - CITY ENGINEER
 CITY OF WICHITA ENGINEERING PROJECT NO. 468-2022-021574



LEGEND

- EXISTING SANITARY SEWER WITH MANHOLE
- PROPOSED SANITARY SEWER WITH MANHOLE

SEE SHEET NO. C-003 FOR PLAT COORDINATES.

WATERLINE BENEFIT DISTRICT
 LOTS 1 THRU 8, BLOCK A, & LOTS 1 THRU 20, BLOCK B, ALL IN THE VILLAS AT OAK CREEK 3RD ADDITION TO WICHITA, SEDGWICK COUNTY, KANSAS.

SAVED 9/9/2022 3:32:29 PM BY KURTIS DEKAT
 PLOTTED 9/9/2022 3:39:58 PM BY KURTIS DEKAT
 U:\WICHITA-CIVIL\2022\1210524002\PEC\DRAWINGS\210524-002-CU101.DWG

JOB NO.	210524-002-0042
DATE	AUGUST 2022
PM	TBK
DESIGNED BY	SNW
DRAWN BY	DMS
CHECKED BY	TBK
SANITARY SEWER BUBBLE MAP	
CU101	
4 OF 20	