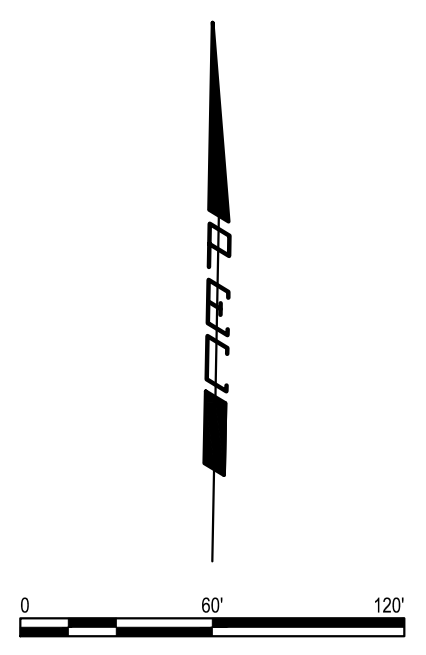
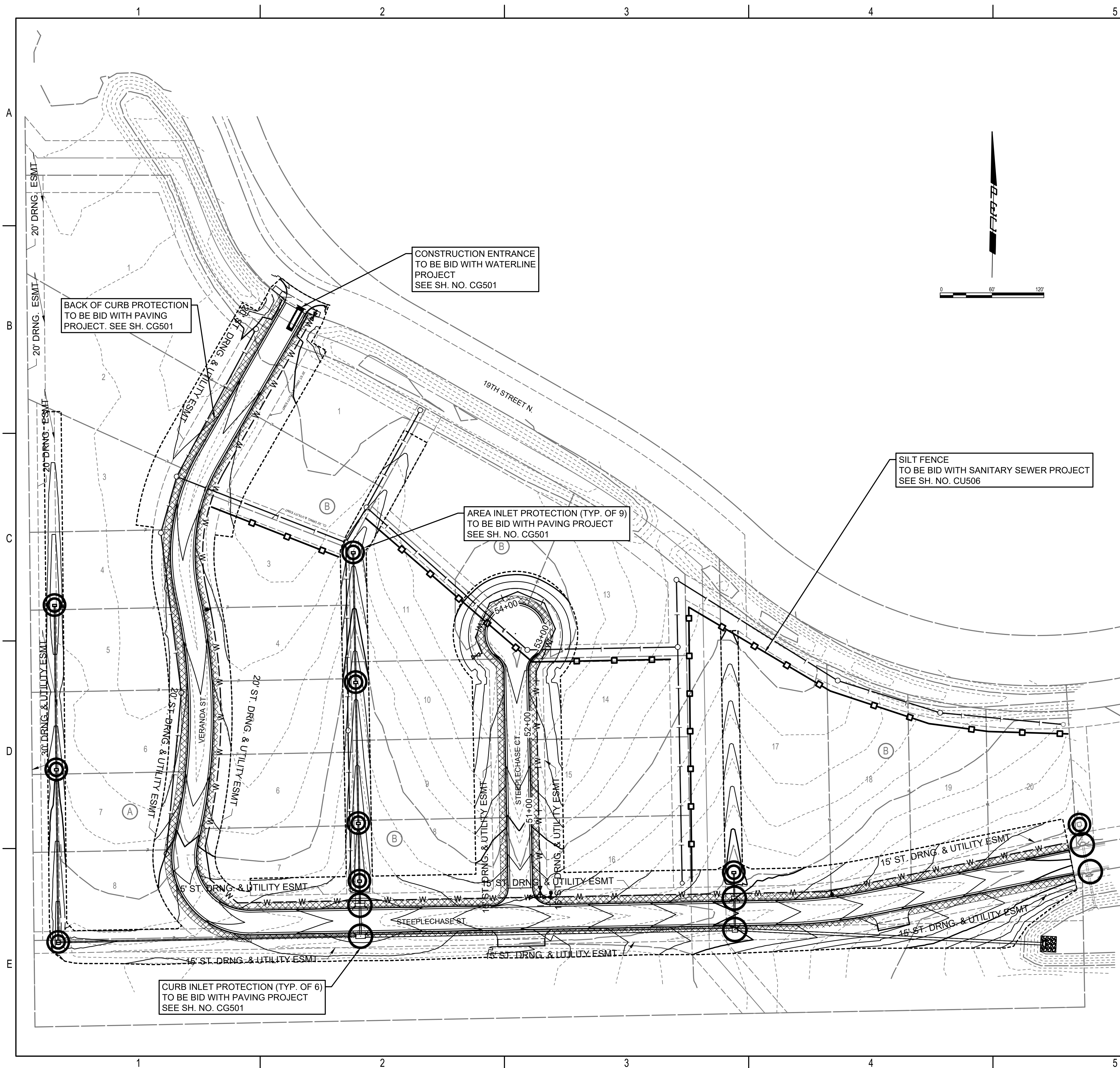


SAVED 9/8/2022 1:49:45 PM BY KURTIS DEKAT
 PLOTTED 9/9/2022 3:59:03 PM BY KURTIS DEKAT
 U:\WICHITA-CIVIL\2021\210524\001\PEC\DRAWINGS\210524-001-CU504.DWG



GENERAL NOTES

1. CONTRACTOR SHALL INSTALL AND MAINTAIN EROSION PROTECTION THROUGHOUT THE ENTIRE PROJECT. THE FOLLOWING QUANTITIES ARE PROVIDED FOR THE PROJECT.

PAVING AND DRAINAGE		
CURB INLET PROTECTION	6	EACH
AREA INLET PROTECTION	9	EACH
BACK OF CURB PROTECTION	4109.0	L.F.
DITCH CHECK PROTECTION	-	EACH
SILT FENCE PROTECTION	-	L.F.
TEMPORARY SEEDING	4.0	ACRE
PERMANENT SEEDING	4.0	ACRE

WATER LINE		
STABILIZED CONSTRUCTION ENTRANCE	1	EACH

SANITARY SEWER		
SILT FENCE BARRIER	1360.0	L.F.

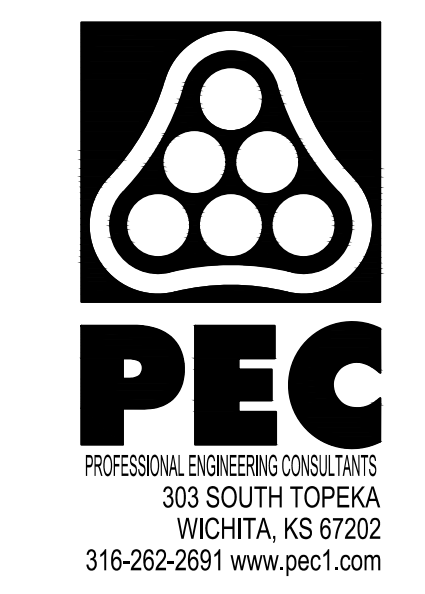
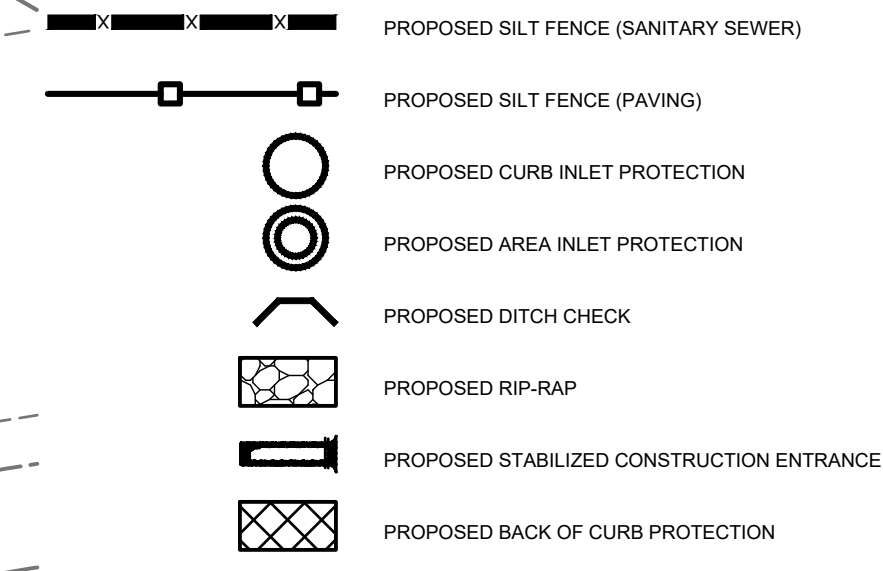
- THE EROSION CONTROL DEVICES SHOWN ON THIS SHEET ARE CONSIDERED MINIMUM STANDARDS. WHENEVER SEDIMENT ENTERS THE STREETS, STORM SEWERS, DITCHES, OR PONDS, CONTRACTOR WILL INSTALL ADDITIONAL DEVICES, AS NEEDED, TO CORRECT THE PROBLEM.
- THE EROSION CONTROL DEVICES SHOWN HEREON MUST BE IN PLACE AT ALL TIMES DURING CONSTRUCTION UNTIL SUCH TIME AS THE SITE IS REESTABLISHED WITH PAVING OR GRASS. TEMPORARY OR PERMANENT SEEDING AND MULCH WILL BE INSTALLED WHEN EARTHWORK ACTIVITIES CEASE IN AN AREA FOR 14 DAYS OR MORE.
- ANY MUD INADVERTENTLY TRACKED ONTO ANY STREET SHALL BE CLEANED UP BY THE CONTRACTOR, AT THE END OF EACH DAY'S WORK, OR AS DIRECTED BY THE FIELD ENGINEER.
- CONTRACTOR TO FURNISH A TRUCK WASH-OUT PIT TO BE PLACED AT A CONVENIENT LOCATION THAT DOES NOT CONFLICT WITH CONSTRUCTION. CONTRACTOR SHALL CLEAN OUT AND BACKFILL PIT PRIOR TO FINAL INSPECTION. LOCATION SHALL BE APPROVED BY THE FIELD ENGINEER.

SEEDING NOTES

THE CONTRACTOR SHALL APPLY TEMPORARY SEED AND MULCH TO ALL UNPAVED AREAS DISTURBED BY CONSTRUCTION. TEMPORARY SEED (ANNUAL RYEGRASS) AND MULCH PER SPECIFICATIONS. TEMPORARY SEEDING AND MULCHING SHALL BE PAID FOR AT THE LUMP SUM PRICE FOR "SEEDING, TEMPORARY".

PERMANENT PROJECT SEEDING: CONTRACTOR SHALL APPLY SEED, FERTILIZER, AND MULCH TO ALL GRASSED AREAS, WITHIN RIGHT-OF-WAY, DISTURBED BY CONSTRUCTION ACTIVITIES. SEED SHALL BE TALL FESCUE GRASS APPLIED PER SPECIFICATIONS. PERMANENT SEEDING AND MULCHING SHALL BE PAID FOR AT THE LUMP SUM PRICE FOR "SEEDING".

EROSION CONTROL LEGEND



WATER DISTRIBUTION IMPROVEMENTS
 TO SERVE
 THE VILLAS AT
 OAK CREEK 3RD ADDITION
 GARY JANZEN, P.E. - CITY ENGINEER
 CITY OF WICHITA ENGINEERING PROJECT NO. 448-2022-021572

JOB NO.	210524-001-0042
DATE	SEPTEMBER 2022
PM	TBK
DESIGNED BY	SNW
DRAWN BY	DMS
CHECKED BY	TBK

EROSION CONTROL PLAN