

1 2 3 4 5 6

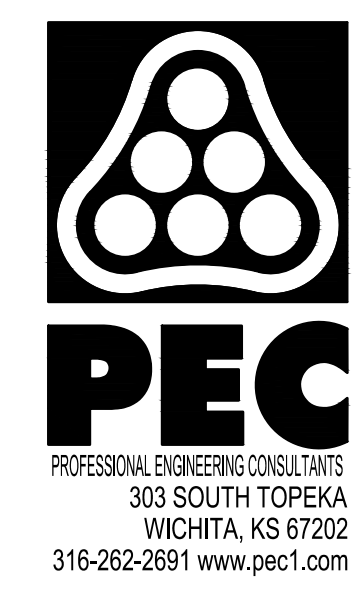
A

B

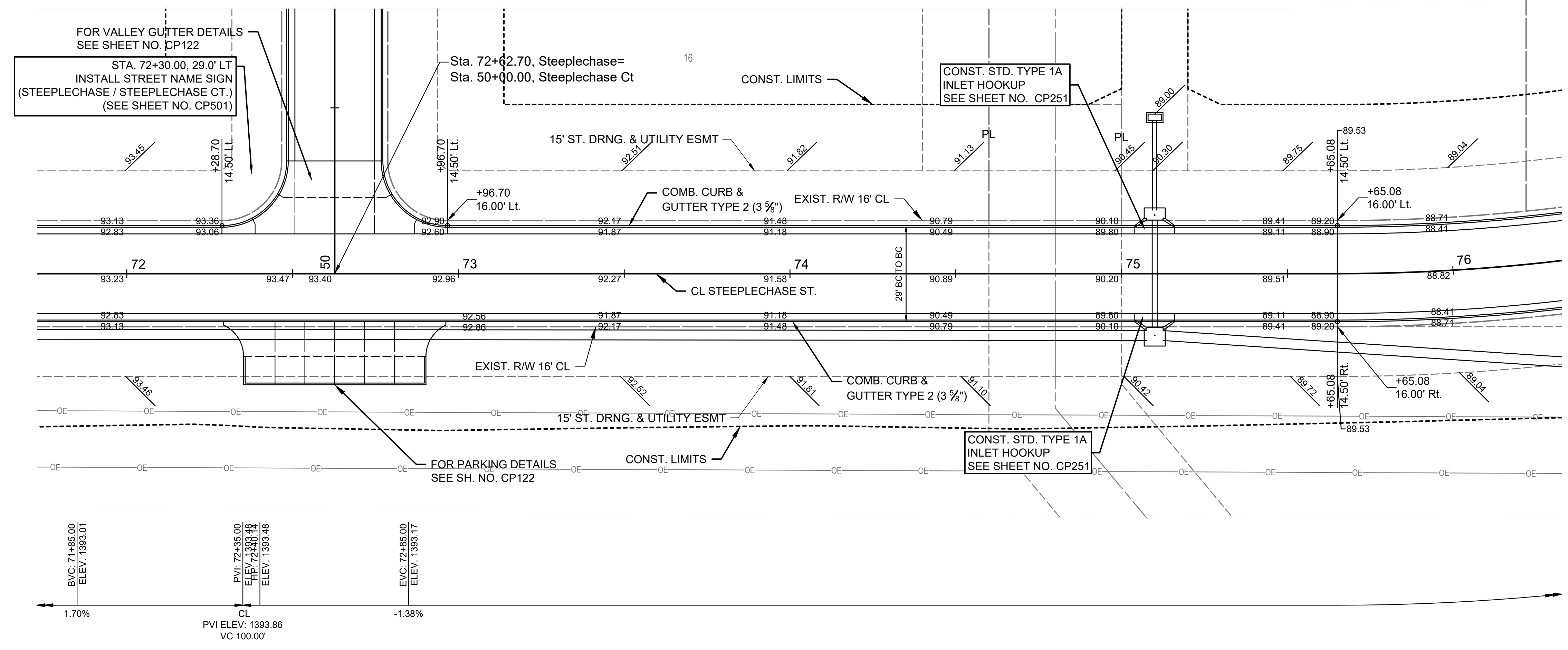
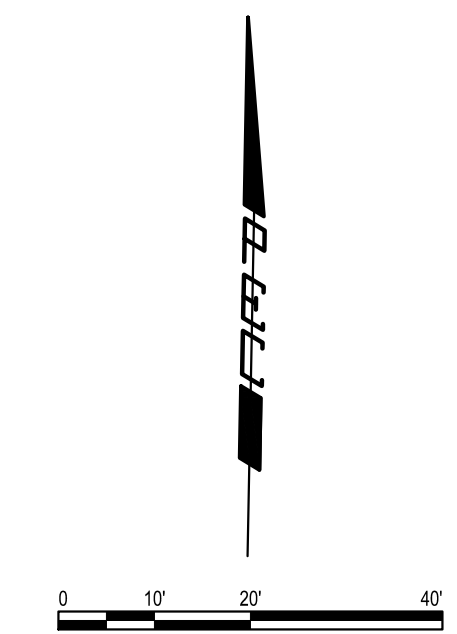
C

D

E



PAVING IMPROVEMENTS TO SERVE THE VILLAS AT OAK CREEK 3RD ADDITION
GARY JANZEN, P.E. - CITY ENGINEER
CITY OF WICHITA ENGINEERING PROJECT NO. 472-2022-085795



FOR VALLEY GUTTER DETAILS SEE SHEET NO. CP122
STA. 72+30.00, 29.0' LT
INSTALL STREET NAME SIGN (STEEPLECHASE / STEEPLECHASE CT.) (SEE SHEET NO. CP501)

Sta. 72+62.70, Steeplechase= Sta. 50+00.00, Steeplechase Ct

CONST. STD. TYPE 1A INLET HOOKUP SEE SHEET NO. CP251

CONST. STD. TYPE 1A INLET HOOKUP SEE SHEET NO. CP251

BVC: 71+85.00
ELEV. 1393.01
PVI: 72+35.00
ELEV. 1393.86
ELEV. 1393.48
ELEV. 1393.46
EVC: 72+85.00
ELEV. 1393.17
1.70%
PVI ELEV: 1393.86
VC 100.00'
-1.38%

1 2 3 4 5 6

SAVED 9/8/2022 2:54:13 PM BY LUKE.PETER
PLOTTED 9/8/2022 4:11:14 PM BY LUKE.PETER
U:\WICHITA-CIVIL\2021\210524\000\PEC\DRAWINGS\210524-000-CP104.DWG

JOB NO.	210524-000
DATE	SEPTEMBER 2022
PM	TPA
DESIGNED BY	AKL, LGP
DRAWN BY	CP
CHECKED BY	RJS

STEEPLECHASE ST PLAN

CP104
16 OF 53