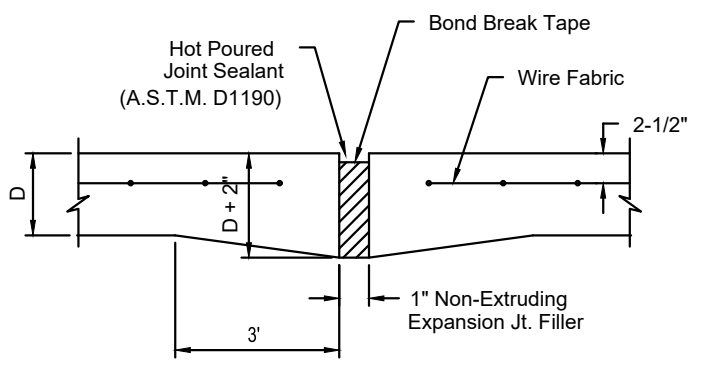


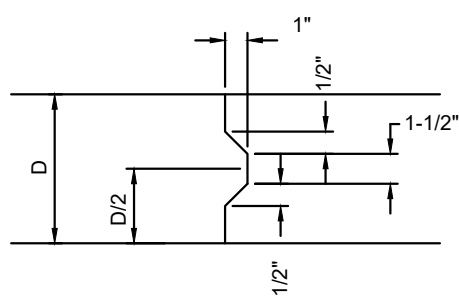
1 2 3 4 5 6

A  
B  
C  
D  
E

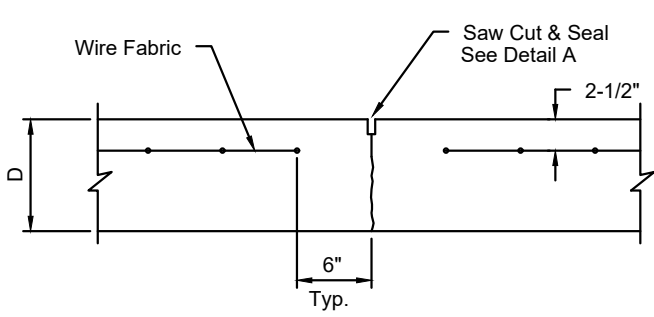


**EXPANSION JOINT**

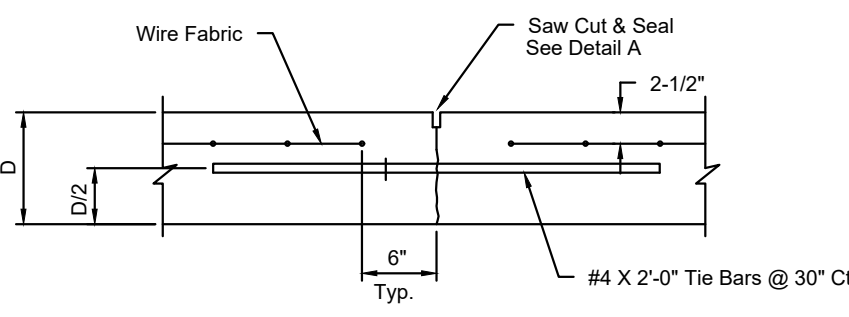
NOTE: Extra Thickness to be Subsidiary to Price of Square Yards Pavement



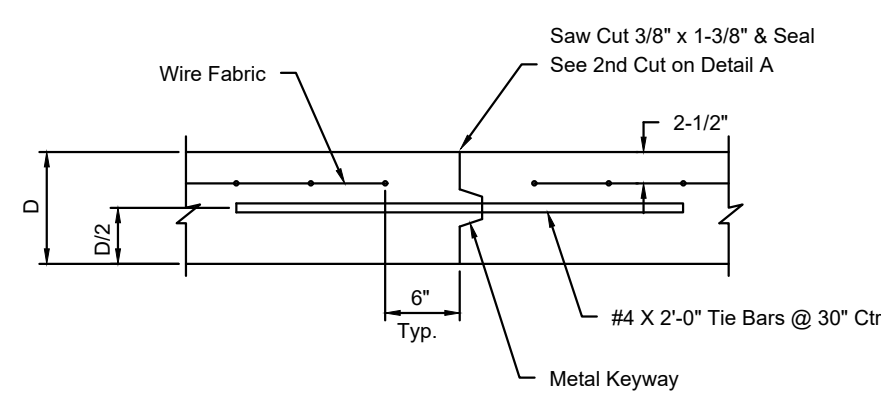
**KEYWAY DETAIL**



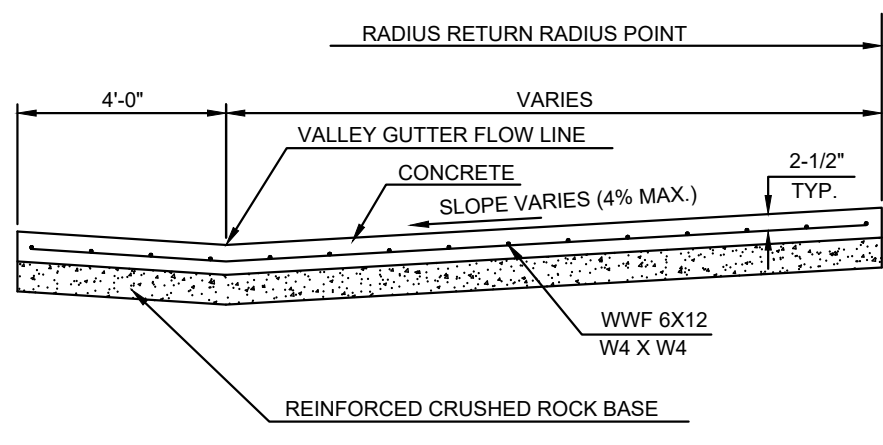
**CONTRACTION JOINT DETAIL (C.J.)**



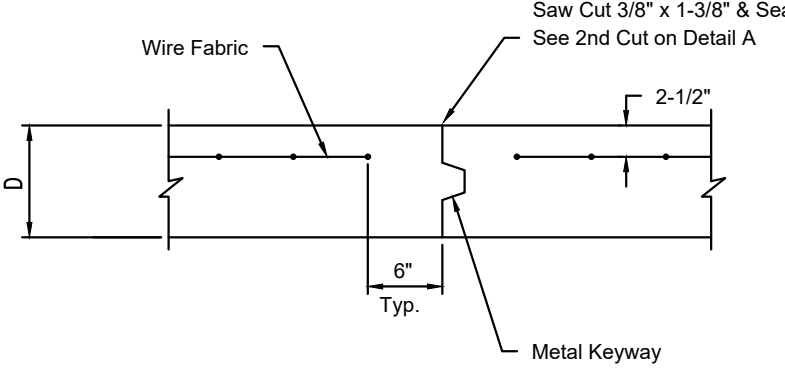
**LONGITUDINAL JOINT DETAIL (L.J.)**



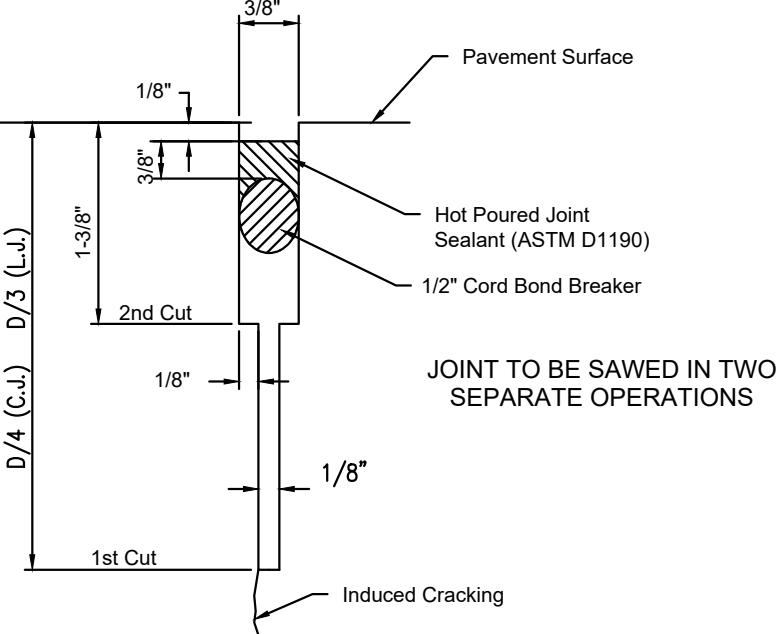
**OPTIONAL LONGITUDINAL JOINT DETAIL (L.J.)**



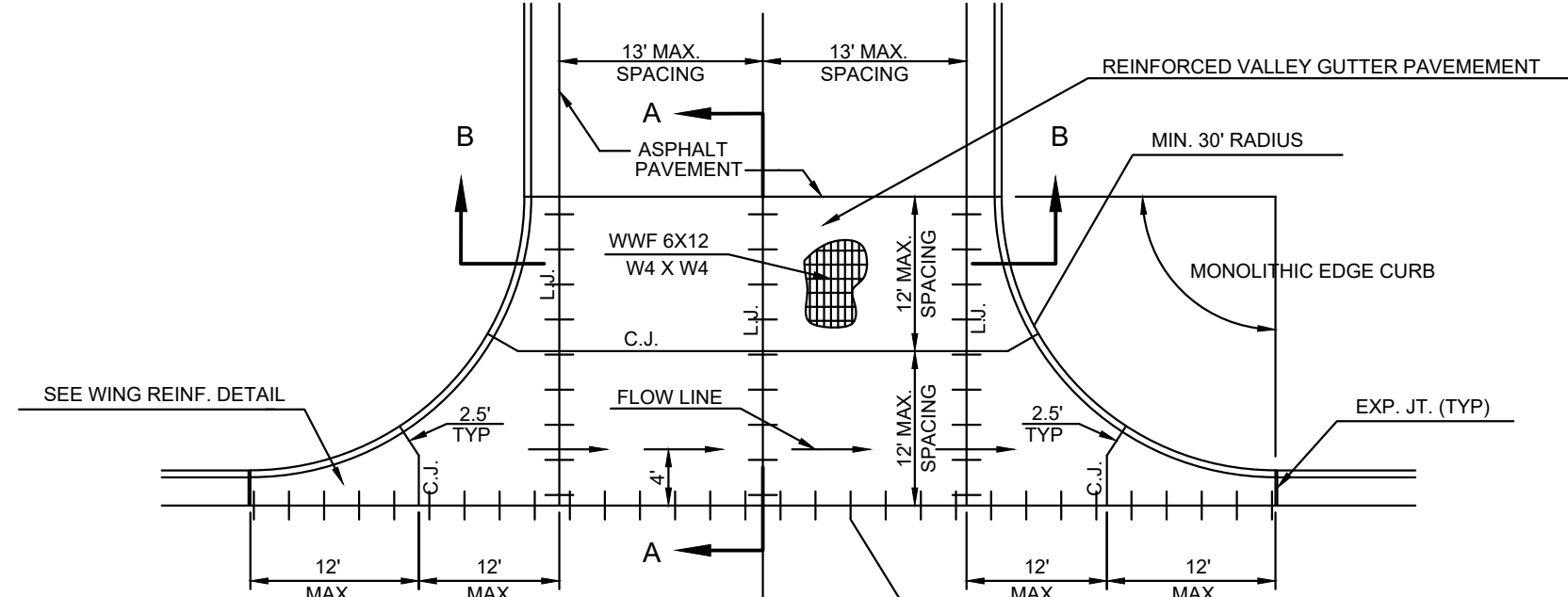
**SECTION A-A**



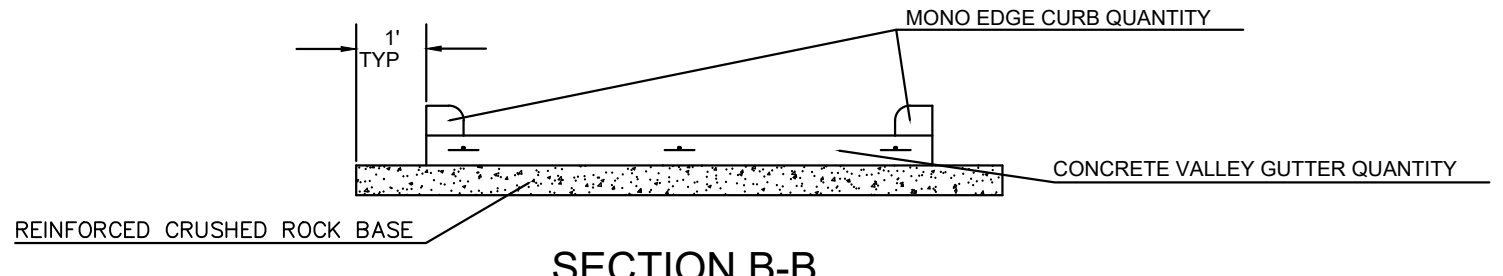
**OPTIONAL CONTRACTION JOINT**



**SAW JOINT DETAIL (DETAIL A)**

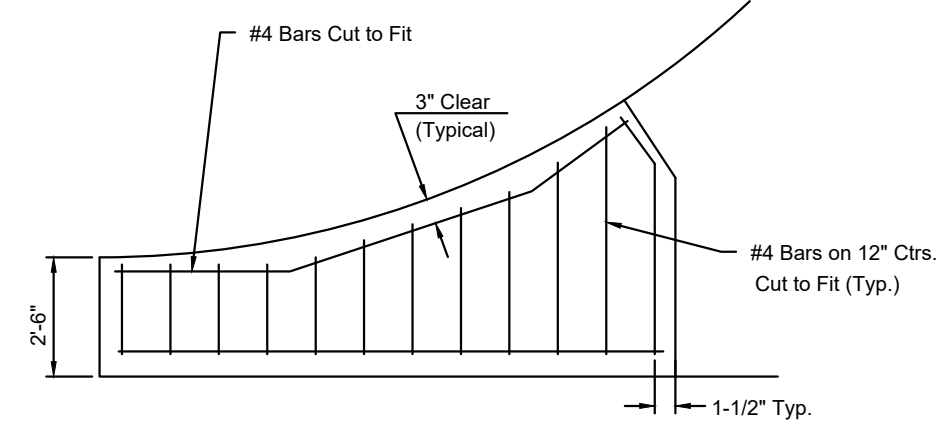


**PLAN**



**SECTION B-B**

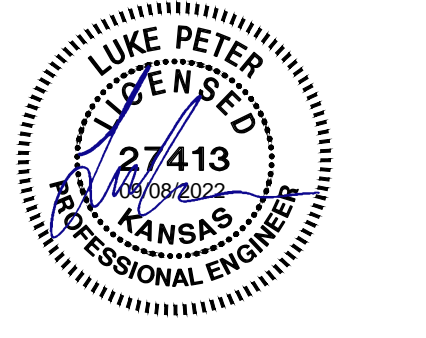
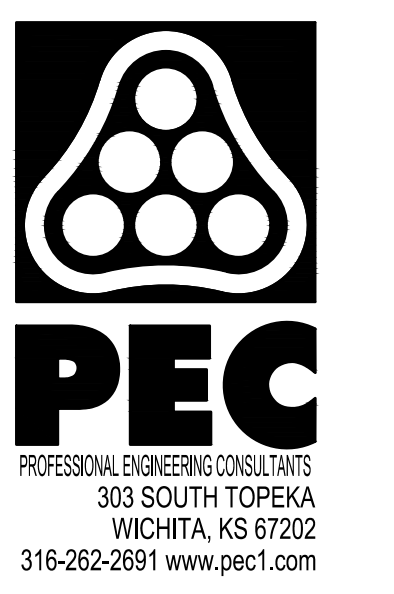
**REINFORCED VALLEY GUTTER DETAIL**



**WING REINFORCING DETAIL**

REVISION MAY 2017	SECTION B-B, ROCK EXTENDED ONE FOOT BEYOND PAVEMENT
<b>VALLEY GUTTER DETAILS</b>	
CITY ENGINEER <b>GARY JANZEN, P.E.</b>	
PROJECT NUMBER	OCA NUMBER
CITY ENGINEER'S OFFICE CITY HALL - SEVENTH FLOOR 455 NORTH MAIN STREET WICHITA, KANSAS 67202-1620 (316) 268-4501	
SHEET _ of _	

Saved: 06-09-2022 2:02:24 PM BY CARLOS PEREZ  
 Plt. Scale: 1:1 06-09-2022 4:12:37 PM BY LUKE PETER  
 U:\Wichita-Civil\2022\1210524000\PE\DRAWINGS\210524-000-CP152



**PAVING IMPROVEMENTS TO SERVE THE VILLAS AT OAK CREEK 3RD ADDITION**  
 GARY JANZEN, P.E. - CITY ENGINEER  
 CITY OF WICHITA ENGINEERING PROJECT NO. 472-2022-085795

JOB NO.	210524-000
DATE	SEPTEMBER 2022
PM	TPA
DESIGNED BY	AKL, LGP
DRAWN BY	CP
CHECKED BY	RJS

VALLEY GUTTER DETAILS

**CP152**  
24 OF 53

1 2 3 4 5 6

SAVED: 6/9/2022 2:02:24 PM BY CARLOS PEREZ  
 PLOTTED: 9/8/2022 4:12:37 PM BY LUKE PETER  
 U:\WICHITA-CIVIL\2022\1210524000\PE\DRAWINGS\210524-000-CP152.DWG